



VOLUME 17 NUMBER 2 JUNE/JULY 1995

# HEATH HERALD

HEATH'S FIRST NEWSPAPER 50¢

## HEATH SCHOOL BUILDING COMMITTEE REPORT

by Budge Litchfield

With construction well under way and an enjoyable groundbreaking behind us the committee has breathed a collective sigh of relief. Many thanks to all you Heathens who came to the groundbreaking. We hope you had as good a time as we did. We were also very pleased to see Superintendent Cormier, Senator Rosenberg, Representatives Buell and Kulik as well as a member of Senator Swift's staff make the trip to Jacob's Road and join us in celebrating this historic event. It would be nice to think that their presence and interest will prove helpful as we continue to lobby for an increase in our reimbursement rate on this project.

At the time this report is being written footings and foundation walls are being poured in the north and west portions of the school. There are a number of construction trailers and pieces of heavy equipment on the site which seems very well organized, neat and clean. If you want to go see what is happening yourself, please do, but remember it is a construction site. During work hours please stop in at the main trailer where you will probably be greeted by our Clerk of the Works, Steven Kehler. Be aware that during work hours a hardhat will probably be given to you to wear on site. If you visit after hours please be careful, make sure that children are well supervised, and in general treat the site, materials and equipment with respect.

A principal for our school will be hired this winter. This means that during the summer and fall interested parties will begin meeting to discuss educational philosophies and programs. The School Building Committee will help form a local education council type group to facilitate these discussions and work with the administration and Mohawk School Committee in the hiring and planning processes. If this interests you please contact Linda Marcotte, Doug Wilkins, or Budge Litchfield.



GROUNDBREAKING CEREMONY  
(Photo by Susan Silvester)



HEATH SCHOOL TAKES SHAPE  
(Photo by Mike Peters)



AN IMPORTANT DAY FOR HEATH  
(Photo by Susan Silvester)



## CARD OF THANKS

The family of Robert F. Coates would like to thank the ambulance crew, the EMTs, the policemen and all others that responded so quickly at the time of his accident.

Also thanks for the money, flowers, cards, food and telephone calls that we received; the VFW for the services at the visiting hours and the funeral; to Rev. Allen Comstock for his comforting words and the Ladies that did the reception at the Hall; the Smith-Kelleher Funeral Home for an excellent job, and all others that helped us in any way.

## Margaret Coates

## Dan Coates

### Linda & Roger Hill and Family

### Wanda Coates and Family

### Cindy and Bobby Coates and Family

### Shawn and Debbie Coates

## Christine Coates

**Adam Coates Royer**

Edith C. Royer

## A.L. AVERY & SON

~~~~~

## GENERAL STORE

**Charlemont • 339-4915**

# HEATH HERALD

## HEATH'S FIRST NEWSPAPER

|                              |                         |
|------------------------------|-------------------------|
| <b>Managing Editor</b>       | <b>Susan Silvester</b>  |
| <b>Gen. Ed. &amp; Layout</b> | <b>Pegge Howland</b>    |
| <b>Staff Reporters</b>       | <b>Edith Royer</b>      |
| <b>Columnists</b>            | <b>Elsa Bakalar</b>     |
|                              | <b>Michael D. Coe</b>   |
|                              | <b>Bill Lattrell</b>    |
|                              | <b>Carroll Stowe</b>    |
|                              | <b>Pat Leuchtman</b>    |
|                              | <b>Jesse Seaver</b>     |
|                              | <b>Laurie Wheeler</b>   |
| <b>Advertising</b>           | <b>Deborah Phillips</b> |
| <b>Circ. &amp; Business</b>  | <b>Deborah Phillips</b> |
| <b>Typography</b>            | <b>Arlene Markert</b>   |

The HEATH HERALD is published six times a year in April, June, August, October, December and February.

**SUBSCRIPTION RATE - One year: \$5.50 (payable in advance by check or money order.)**

**ADVERTISING RATES** - Display ads: \$4.80 per column inch (Discounts on six or more insertions.)

**CLASSIFIED ADS - \$2.00 per line.**

Send all correspondence to: Box 54, Heath, MA  
01346-0054

## MILESTONES

by Edith C. Royer

Born on April 27, a daughter, Meredith Sara Kai Poinen Gibbons, to Nan and David Gibbons of Heath. Grandparents are Roy and Beryl Gibbons of Leighton Buzzard, England, Nancy and Bob Sena, of Lake Powell, AZ and Hugh and Margaret Oberg of Portland, OR. Great grandparents are Alice Oberg of Beavertown, OR and Walter and Vera Bechtol of Veneta, OR.

**Robert F. (Blackie) Coates** of Ledge Road, Heath died April 3 at the Franklin Medical Center. He was born in Heath on November 15, 1919, the son of Fred S. and Blanch (Joy) Coates. He attended Heath schools and had lived in Heath most of his life.

He was a World War II veteran. Prior to retirement in 1988 he was a school bus driver for the former B & F Transportation in Charlemont. He also worked for the Buckland Highway Department for 14 years and the Heath Highway Department. At the time of his death he delivered papers for the West County News. He was a life member of the Veterans of Foreign Wars Post 8503 in Shelburne Falls. Survivors include his wife Margaret L. Coates of Shelburne Falls, three sons, Robert D. and Shawn A. Coates of Greenfield, Adam S. (Coates) Royer of Shelburne Falls, four daughters, Linda D. Hill and Wanda D. Coates of Greenfield, Cindy L. Coates of Charlemont and Christine M. Coates of Colrain, a sister Edith C. Royer of Heath and five granddaughters and five grandsons. Services were held at the Smith and Kelleher Funeral Home with burial in the Heath Center Cemetery.

**Esther M. Dickinson** of South Road, Heath, died on June 1 at the Franklin Nursing and Rehabilitation Center in Greenfield. She was born in Heath to Horatio F. and Belle (Gleason) Dickinson and was a lifelong resident of Heath. For 30 years she served as the postmaster of the Heath Post Office. She was a member of the Heath Union Church, the Ladies Aid and the Heath Historical Society. Survivors include two Brothers, **Ralph H.** and **Howard E.** of Heath and several cousins. Services were held June 4 at the Heath Union Church with the Rev. Roger Peace, pastor, officiating. Burial was in the South Cemetery.

## HEATH LADIES AID

by Edith C. Royer

The Ladies Aid will have their summer sale at the Heath Fairgrounds on July 29 from 10 AM to 3 PM. It will also be the Church Craft Fair with many other crafts for sale by people of Heath. Come and enjoy a day with us, and visit old friends.



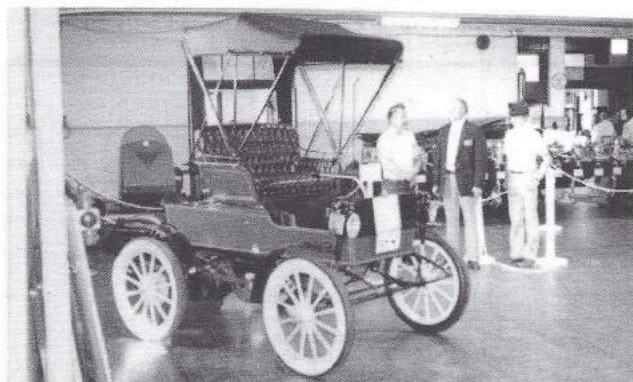
## AMERICAN TOUR DE SOL

by Jack Cable

"We will be out of oil within 35 years". Experts tell us this fact as the oil supply diminishes. The demand for oil is rising as we ignore the warnings of running out. Over 50 percent of oil used in the United States is imported and is responsible for one-third of our trade deficit.

Electric, hybrid-electric and alternative fuel vehicles are definitely in our future. Actually they are here now as demonstrated by the event seen in Greenfield on May 23 as the American Tour de Sol stopped there. 6,000 people including many Heath residents witnessed this road rally of 49 mostly electric vehicles. Most of the vehicles ranging from a motorcycle to a 20 passenger bus were powered by electricity either battery or solar or both. The race started in Waterbury, CT on May 20 and ended in Portland Maine May 27. The rally requires 50-70 miles to be driven daily using secondary roads at normal driving speeds with extra laps on interstates. All vehicles were capable of speed limits and some were capable of distances of 100 miles on one charge.

The Tour de Sol originated seven years ago - about five years ago I witnessed this race when it stopped in Winsted, CT - only about a dozen vehicles were in that race. Being an old car enthusiast since my teenage years, I've experienced the honor of being around alternative fuel cars. Steamers are still my favorite. I had a good friend who owned a 1903 Stanley in which he traveled many miles. I've attended many steam car meets and ridden in many including a Stanley 9 passenger bus once used to tour up Mt. Washington. I instigated the purchase, restoration, maintenance and driving of an electric car a few years ago. A relative was interested in the car hobby so the electric car was it. We drove it in parades, weddings and car events. It was powered by 8 six-volt batteries, had a two speed forward, one reverse electric motor - range was 25 miles. It never failed us and we passed all gas stations, quietly. It was a 1904 Pope-Waverly Electric.



1904 POPE WAVERLY ELECTRIC

## MARY LYON BOARD VOTES TO INCLUDE HEATH SCHOOL

by Susan Silvester, Executive Director

At the May meeting of the Mary Lyon Education Fund the Board of Directors unanimously voted to expand its service to include the new Heath Elementary School. The new school, for which groundbreaking began last month, is slated to open in the Fall of 1996.

There is much to accomplish before classes officially begin. Staff will be hired, a school council established, curriculum developed and classroom material ordered. Additionally the equipment, software, library/media center material and textbooks must be on the shelves and ready for use. The Mary Lyon Education Fund has already received several inquiries regarding grant writing for the procurement of these and other items.

This is an exciting era in the history of the local school district. The expansion from six to seven schools encompasses every aspect of education from transportation to shared specialists. The Mary Lyon Education Fund currently serves five K-6 schools including Sanderson Academy, Rowe Elementary School, Hawlemont Regional Elementary School, Colrain Central School, Buckland-Shelburne Regional School and grades 7-12 at Mohawk Trail Regional School. The addition of the Heath school will provide new challenges and an opportunity to literally provide services from the ground up.

### GARDEN LOVERS HUGE PERENNIAL PLANT SALE AND GARDEN TOUR

SATURDAY, JULY 1, 10 am - 2 pm  
ROWE ELEMENTARY SCHOOL

Come tour 6 wonderful Heath and Rowe gardens.  
Add to your garden -- select some prime perennials  
from our supply.

*Maple  
House*



*The house on the hill with the view of yesteryear*

Within 5 minutes:

- Downhill and Cross-country skiing
- Trout fishing & whitewater play in the Deerfield
- Over 10 miles of wilderness trails
- Swimming and canoeing in private lake

*Lodging and breakfast from \$45*

Middletown Hill Rd. Rowe, MA (413) 339-0107



## LIBRARY LINES

by Alli Thane

It is time to start thinking of our annual summer reading program. This year the contest is called "Reading is Natural" and is, as usual, sponsored by the Massachusetts Regional Library System. We have had very little interest in the program the last couple of years. Perhaps because it comes in June when our young people are still in school and anxious for vacation fun. However, this year we will run the program from July 1 to August 14. The prizes will be awarded at Heath Fair and one of them is money to spend at the Fair, so let's consider joining.

Don and I have been busy weeding, especially old fiction, just to make a little more space for new books. It is a difficult job for both of us because neither can part with books and so many of them land right back on the shelf. To make matters worse, the day we part with a Curwood or a Seifert, or an old Emily Loring that hasn't been off the shelf for ten years, someone comes in and is quite disappointed to find the book gone.

We have been fortunate to have Michelle Howe working with us. She has caught up our neglected filing system and kept up with the "overdues." Her work is much appreciated.

We miss our trustee of several years, Pat Leuchtman, who has gone to work in China. Pat has been such a pleasure to work with and such a valuable help to the library. We will also miss Carolyn Armstrong who decided not to run for the office of trustee because of busy home commitments. However, our capable Maureen O'Malley is at the helm and we have Kim Richter and Mary Boyd filling the spaces of Treasurer and Secretary.

## Shepherd Excavation



Rte. 8A, Heath, MA

(413) 337-4215

TEL: DAYS 413-624-8843

NIGHTS 624-3783



**STONE'S SUNOCO**  
COMPLETE AUTOMOTIVE SERVICE  
VARIETY STORE  
24 HOUR TOWING

ROD STONE

ROUTE #112  
COLRAIN, MA 01340

A few of our new books are:

Schindler's List - Thomas Kenealy

Suicide Charlie - Norman Russell

Loving and Leaving the Good Life - Helen Nearing

Second Nature - Alice Hoffman

Crossing the Threshold of Hope - His Holiness John Paul II

Politically Correct bedtime Stories - James Finn Garner

In the Lake of the Woods - Tim O'Brien

The Afterlife - John Updike

The Rainmaker - John Grisham

Videos

Upstairs Downstairs Vol. 1-7

Remains of the Day

Wyatt Earp

When a Man Loves a Woman

Grumpy Old Men

Shadowland

Lion King

Piano

Several children's books including Eyewitness series books.

The Heath Council on Aging purchased many new audio books and large print books.

## HEATH ARTS LOTTERY COUNCIL

by Jayne Hare Dane

The Heath Arts Lottery Council was allotted \$3,000 for the 1995 cycle. The preschool received \$125 for story teller Debby Cuthbert to perform at the annual open house. Rowe School received \$580 for a performance by Opera to Go as well as \$388 to attend a performance of "Mozart and Matisse" at the UMass Fine Arts Center. Robert Dane will receive a grant of \$1,907 to begin a project with students to create a cast glass screen to be installed in the lobby of the new elementary school. The project will consist of a series of workshops for students to design and cast blocks which will depict the four seasons in Heath.

Terms for myself, Julie Hall, and Fred Burrington have run out. If you are interested in being a member of the committee contact Jayne Dane, 337-5736.



**BALD  
MOUNTAIN  
POTTERY**

STONEWARE & PORCELAIN

Sarah Hettlinger

South Rd. Heath, MA 01346 (413) 337-4496  
28 State St. (Near the Bridge of Flowers)  
Shelburne Falls, MA (413) 625-8110



## SUPPORT THE COMMUNITY ART PROJECT

by Robert Dane

I hope you have already heard about the community art project I am organizing. Through a series of workshops, the children of Heath and I are making a cast glass screen to be installed in a common area in the new Heath Elementary School. The screen will depict the four seasons in Heath in four panels, bordered by the cast handprints of the kids. The themes of this work are community in Heath, and what makes Heath special in each of the four seasons. We are starting to cast the handprints here at Heath Brook Studios on June 24.

I am writing to ask for your help. I have already received a grant from the Heath Arts Lottery Council and I hope to be awarded more in next year's cycle, but this will only cover a portion of the costs. We are expecting virtually every child in town to participate in some way, making this a large and complex project. The finished screen will be comprised of 147 cast glass blocks, each 8" square. The overall dimensions are 14 feet long by 6'8" tall. I estimate each block will cost \$50 installed.

As a part of the Heath Community, and as a friend of the arts and education, I hope you will be interested in buying a block to support our efforts. You may buy as many blocks as you like, or if you can't donate \$50, smaller amounts are also welcome. Checks can be made payable to Heath Brook Studios. People who buy blocks will be listed as supporters on a plaque on the screen.

This project will be part of what will make the Heath Elementary School really special, and it will give the kids something they can be proud of. They can have a hand in their new school.

Thank you in advance for your support.



HEATH YOUTH ATTEND GLASS SCREEN WORKSHOP


## MUSIC IN THE GARDEN

Music in the Garden, a gala fund raiser for the Valley Community Music School, will be held on Sunday, July 30, 1 - 5 PM in the garden of Elsa Bakalar in Heath. The afternoon will include continuous music performed by the students and faculty of the VCMS and a tea party. Tickets are \$15 each and are limited to just 100. The event will be held even if it rains since there will be a tent. Tickets are available at World Eye Bookshop in Greenfield, Boswell's Books in Shelburne Falls, Blue Meadow Farm in Montague or by calling 413-498-4411 or 413-339-5590. Proceeds from Music in the Garden will benefit the programs of the Valley Community Music School.

Mrs. Bakalar's perennial garden, one of New England's horticultural showcases, has been featured in *Horticulture Magazine* and *Taylor's Guide to Garden Design*. The garden is also a studio in which she teaches seminars and weekend workshops to a national following. Elsa Bakalar's work has been featured in *The Boston Globe* and *Newsday*. She lectures throughout the United States. In her book, *A Garden of One's Own*, Mrs. Bakalar shares the techniques and insights that have made her extraordinary garden bloom from spring to late fall.

The VCMS was founded in 1990 through the efforts of 5 organizations: the Arts Council of Franklin County, Music in Deerfield, the Pioneer Valley Symphony, Mohawk Trail Concerts and Greenfield Community College. The school is located in Greenfield Community College which donates the space.

The mission of the VCMS is to provide quality music instruction to all interested persons regardless of age, ability, income level or ethnic origin. The school offers private lessons on all instruments, including voice. VCMS also offers the opportunity to participate in a variety of ensembles where students make music together. Scholarship dollars are essential to carrying out the school's mission. For more information about the VCMS or to be placed on the mailing list, call 413-339-5590.

 Frederick M. Burrington  
Watercolor & Pen and Ink Drawing  
Commissions Taken

RT. 8A, Charlemont, Ma. 01339  
Tel. 413-337-4426



# OF HERBS AND HEIRLOOMS

by Laurie Wheeler

I think of summer in terms of colors; blue of sky, green of growing things, and yellow of sun. The first spring dandelions, with their intensely yellow flowers, ready me for the vibrancy of this upcoming season.

By the time you read this, I'll have made this year's first batch of Dandelion Jelly. Number of batches is equivalent to amount of patience I have to separate the petals from the bracts, so some years it remains at one. My fondness for it harkens back to when my grandmother let us smear her homemade doughnuts with the clear yellow jelly.

Surrounding my herb garden proper is a carpet of dandelion. Sheer number convinced me there must be something I could do with them in addition to the jelly. An herb oftentimes appears in abundance to someone who is in need of that herb's healing properties.

Dandelion, *Taraxacum officinale*, is a most beneficial and prolific herb. It is high in potassium, and acts as a stimulant and tonic to the kidneys, liver and gall bladder. Old herbals abound with recipes for the roots, flowers, and leaves.

As a first rite of spring, to get rid of winter sluggishness, the young leaves may be torn up and eaten either by themselves or with regular salad greens as a spring salad, or boiled like spinach. If boiling, drain the dandelion leaves well, and add a little butter, garlic and vinegar.

The dried leaves have also been used in former times in beer. Herbal beer was reputed to be less alcoholic, and of a tonic nature to the body. Other herbs were sometimes added, depending upon the desired effect. Also being less expensive than regular ales, it was reputed to be quite a favorite drink.

Dandelion's long taproots may be collected and dried in June, July, or August. This is when they are at their most bitter, and therefore most beneficial. These are good for storing away for later use in tonic teas. On a larger scale dandelion root is dried, roasted, and ground to be used as a coffee substitute. These are harvested, in the Fall when they are less bitter.

The flowers are my favorite part of the plant. Well, that's not quite true; I equally enjoy the seedheads as they waft through the air. I understand not everyone agrees with that!

Ray Bradbury wrote a tale of summer and a young boy growing and experiencing the magic and mysteries of the season. The essence of those days of summer were captured by his grandmother in her bottles of Dandelion Wine. Doesn't summer seem to bring magic to even the most commonplace of things?

Making Dandelion Wine requires removing all the petals from the bracts. The resulting amount should be about a gallon of flowers to a gallon of boiling water. Over the course of several days to a week, boiling water, sugar, oranges, lemon and a little yeast are added. Further fermentation takes place during the two months it must sit inside a wooden cask in your basement. And then it should be bottled. When drunk in small amounts it acts as a blood tonic, and lifts ye weary spirits.

During midwinter, when you open a bottle of dandelion wine, or taste a spoonful of that golden jelly, for a moment you can just taste the headiness of summer. The potential in this wild plant is great, so before you mow those little guys down, pick a few, eat a few, drink a few!

## A NEW SERVICE FOR THE COMMUNITY

Evergreen Information Services is a community based, and community focused business which was recently begun by Nancy Burrington of Heath. Her business is located at her house on Route 8A in Heath. At present she is offering a Financial Aid for College service, as well as word processing and resumes. Nancy also intends to soon offer personalized children's books and self-help books. Depending upon interest she may offer manual or computerized bookkeeping and consultation setting up systems. In serving the community suggestions are always helpful.

### Sawyer News Co.

Bridge St. • Shelburne Falls

Monday-Saturday 6:30am-5pm

Thursday 'til 7pm

Sunday & Holidays 5:30 am-12:30 pm

NEWSPAPERS • MAGAZINES  
PAPERBACK BOOKS • CARDS  
GIFTS • MOVIE RENTALS  
ASSORTED CANDIES & FILM

Tel. 625-6686

Don & Kathleen Upton, Proprietors

### RICHARD C. BISHOP

Attorney at Law

Admitted in Massachusetts & Florida

**SPECIALIZING IN WEST COUNTY  
REAL ESTATE**

- Real Estate Closings
- Zoning and Land Use
- Taxation of Real Estate Transactions

LEVY - WINER, P.C.

625-2574

102 Bridge Street, Shelburne Falls, MA





## The Way It Is In The Country

*"If it's old, works well and has a purpose in life,  
don't change it".*

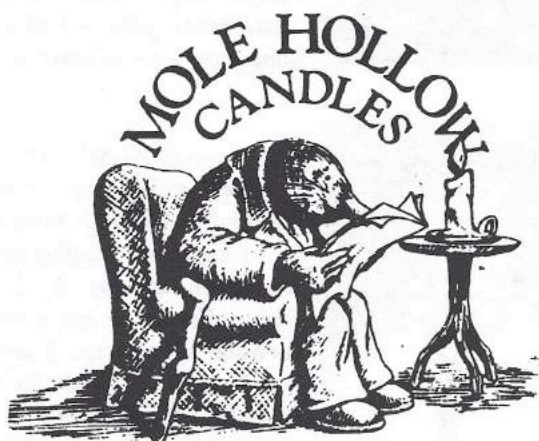
by **CARROLL STOWE**

### A DIFFERENT INTEREST

Our native son and Heath resident, Alvin Hillman, has a great interest in old Cletrac crawler tractors. Alvin can hold folks almost spellbound with his unique knowledge of this obsolete iron.

His intense study of these old iron workhorses goes back to his pre-military service days when he had to help his father and uncle with the sap gathering. It was a great treat to be allowed to operate his uncle's Cletrac crawler to haul the sap to the roadside tanks.

This type of tractor is no longer made so parts for them are found only through intensive search. Alvin had known about a bulldozer unit for some time and had commented that it only needed a coat of Simonize to make it workable as it truly looked well-kept. Beauty is only skin deep. It took several years for Alvin to amass the dollars to be able to bring his long wished for treasure home. But alas when he went to get the machine it was very difficult to start and only ran on 3 of its 6 cylinders. The over generous use of starting fluid was responsible for this unfortunate condition. Mr. Hillman got the dozer home and parked it for some time. After a lot of lost sleep about what way to make this machine workable he repowered it with a sweet young gas engine that was harvested from a crippled unit. The project was more time involved than Alvin had planned but with his many talents he created a very workable unit and although it is more expensive to feed it works very



Downtown Shelburne Falls  
Overlooking the Falls  
and the "Glacial" Potholes  
625-6337  
"OPEN 7 DAYS"

well and its owner is most pleased with the end result.

This old machinery had its most valued service in the timber industry. These tractors are steered with band type brakes that run in oil to keep them cool and to slow the wearing process. Different than International or Caterpillar that steer with clutches and brakes these Cletracs have full power to the tracks at all times. So when negotiating a corner or turn with a sled load of logs it comes around easier.

While these old iron servants were not well-liked for fine grading with a dozer blade they have well paid their dues as snow plow iron.

Alvin was able to get the tractor that he first drove away from his uncle and re-worked its engine and did extensive track work and now it is most useful in his wood business. This Cletrac power was powered mostly with Hercules engines and they produced a very throaty sound at the muffler.

Alvin's mental catalog has a growing list of places where he could find an old unit from which to make use of parts. In some circles Alvin is affectionately known as "Cleaty".

These tractors haven't been built since the late 50's and early 60's. So now parts are almost non-existent but in this day they are still in demand in South America.

With the reading of this Cletrac tractor story I can only wish that it created a steady line of people looking for information about this unique machine. The Cletrac name was derived from the Cleveland Tractor Company. Alvin's hobby is most interesting and useful. The Cletrac information number is 413-337-5576.

## Summer Programs



**July '95**  
**1 - 2 wks**

Watercolors - Joan Boryta  
Advertising Design - Bill Didul  
Publishing for Kids - Kathy Wilkes  
Sculpturing in Clay - Polly Anderson  
Drama/Musical Theatre - Gerrit White  
Cooking Around the World - Ellen Zale  
Multi-track Recording - Orville Giddings  
Gardening Workshop for Kids - Sylvia Pippen

### CO-ED PROGRAMS FOR AGES 9 & UP

For more information please call  
**The Academy at Charlemont**  
(413) 339-4912



## MOHAWK SCHOOL NEWS

by Magen MacDougall

Well, it is that time of year again, summer vacation. What a wonderful time of the year, finals, SATs, Advanced Placement testing, and choosing classes for next year. In other words, stress, and lots of it! The SAT's were primarily for the juniors, and were held on a Saturday morning. The Advanced Placement testing (AP tests) were held throughout the week of May 15, the purpose of these tests is to give college credit for taking the AP course this year. I personally took the AP U. S. History test, and that took four hours during school, and a lot of studying.

Choosing next year's classes takes a lot of time as well, because one has to look at choices and decide the best courses, making sure there are enough credits to maintain class standing, and then the schedule must be signed by the teachers and handed in. There are many students who are going to another country next year to attend school, such as Japan and South America, or have decided to take classes at GCC.

For the lucky eighty or so people who do not have to come back next year, they have had the prom, graduation, and the school year ending earlier for them than the rest of the school. The Prom was held on May 12 at the Lord Jeffery Inn in Amherst, and graduation was in June, with school ending about two weeks before all other Mohawk students. As the former seniors look forward to their college years, the rest of us look forward to yet another year at Mohawk.

SERVICE

INSTALLATIONS

**MOUNTAIN VIEW  
HEATING**

ED ELLSWORTH

CHARLEMONT, MA

413-339-5550



**BRIANS CARPENTRY**

P.O. Box 51

Heath, MA 01346

(413)337-4347

MA Lic.#064094 Reg.#118122

**COMMERCIAL & RESIDENTIAL REMODELING**

Kitchens Baths  
Additions Decks

Specialize in Fine Finish Carpentry

Custom Work Welcome

Free Estimates  
Fully Insured

Referrals Available  
17 years experience

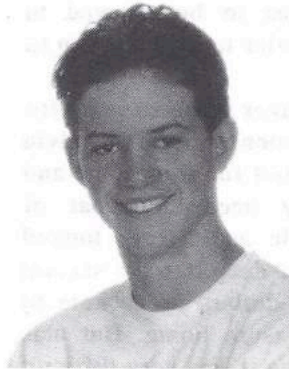
## 1995 MOHAWK GRADUATES



**CHRISTINE JOSEFIK**

I plan to work after graduation.

I would like to thank all my classmates. You have all been great. I will miss you all. Good luck in your future.



**JAMES A. CERONE**

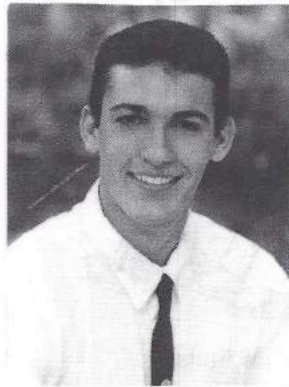
I will be attending UMass/Amherst.

My major will be in Civil Engineering.



**MARY FRANCES TUTURICE  
(TUTTY)**

During the summer I enjoy biking, taking long walks, playing tennis, swimming, and doing a lot of fun and crazy things. Next fall I plan on attending Northeastern University with a communication major. After I graduate from college I plan on managing a radio station.



**ADAM ALMEIDA**

I am going to Babson College in the fall, majoring in Business Management/Entrepreneurship. I loved high school and am looking forward to college. I would like to thank my family and friends for helping me through the ruts in my life.

No photo or information was available for Andrew Shattuck or Angela Almeida.



## ROWE ELEMENTARY PARENT TEACHER PARTNERSHIP

Well, the year is winding down and what a year it has been! The children have enjoyed many wonderful programs this year. A very special thanks to Becky Bradley for all of her time and hard work she has put into organizing these events!

In the month of May the children had the opportunity to sing along with the "Young at Heart Chorus" that came to the school and performed. For a fun family night out, the PTP sponsored "The Spring Fling Dance," which was also held at the school.

On June 12 the PTP will be having a meeting at 6:30 PM at the school. The main topic for discussion will be on how to make the transition easier for the children when the Heath school opens. Please come and share your feelings and ideas. Please note child care is provided at all PTP meetings.

On June 19 the 6th grade class will be graduating, and as in past years the PTP has given each student a thesaurus with their names inscribed by Sharon Brower.

The PTP has proposed to help implement a student council for the coming school year. Hopefully this will give the children more of an opportunity to discuss issues that concern and interest them.



1995 ROWE ELEMENTARY SCHOOL  
GRADUATING SIXTH GRADE

**7 AM to 9 PM**  
Do your Sleeping Bags, Quilts, Comforters,  
Bedspreads, Small Area Rugs, Etc., in our  
Large Front-Loading Machines.

**Village Coin-Op Laundry**  
55 State Street  
Shelburne Falls, MA  
Tel. 625-2345

## RECIPES

### One Hour Buttermilk Rolls

|                              |                |
|------------------------------|----------------|
| 2 pkg. yeast dissolved in    | 3 tbs. sugar   |
| 1/2 c. warm water            | 4 1/2 c. flour |
| 1 1/2 c. lukewarm buttermilk | 1/2 tsp. soda  |
| 1/2 c. melted shortening     | 1 tsp. salt    |

Sprinkle yeast in water. Add buttermilk, shortening, and sugar. Sift flour, soda and salt into liquid mixture. Beat until smooth. Let stand for 10 mins. Roll out, shape as desired. Place in baking pan, let rise for 30 mins. in warm place. Bake at 400 degrees for 15 mins. or until lightly browned. Yield: 2 dozen rolls.

### Apple Toot

|                    |                                     |
|--------------------|-------------------------------------|
| 2 eggs             | 2 tsp. baking powder                |
| 1 1/2 tbsp. flour  | 5 lg. apples, peeled,<br>and sliced |
| 1/2 tsp. salt      | 1/4 c. raisins                      |
| 1/4 c. currants    |                                     |
| 1/2 c. maple syrup |                                     |

Preheat oven to 350 degrees. Put eggs in a large bowl, beat in syrup, flour, baking powder and salt. Stir in apples, and raisins and currants if wanted. Pour into buttered 1 1/2 qt. baking dish. Bake 35-40 mins. at 350 degrees, until golden. Eat with custard sauce.



**The Baker  
Pharmacy**

Tel: 625-6324  
Week Days 8:30AM - 8PM  
Saturdays 8:30AM - 5PM  
Sundays & Holidays 9AM - 12 Noon

52 Bridge Street

Shelburne Falls

**BURNT HILL FARM**  
Jack and Beverly Cable



**SWEET WILD BLUEBERRIES**

PICK YOUR OWN  
**OPEN AUG. 5-6, 12-13, 19-20**  
Wholesale & Retail

Remember our Veterans' on the  
50th Anniversary  
of the end of WW II





# WILD RAMBLINGS

by BILL LATTRELL

## WELL ROOTED

I have always been intensely curious about the codependency that exists in the natural world between plants and animals. As we all know all animals are dependent upon plants. They provide nesting material, escape cover, protective habitat, and most important of all, forage. Herbaceous animals eat only vegetation. Carnivorous animals eat herbaceous animals. Omnivorous animals, like human beings, are highly dependent upon both.

While it is true that most of us are one step removed from the gathering instincts of our ancestors, it is still possible to harvest some very nutritious, very healthy food directly from our wonderful rural surroundings. There is little question that gathering wild edibles is more time consuming than a quick stop at the local grocery store, but many readers will find that the process of learning this skill is a relaxing activity that brings with it a great deal of satisfaction.

In past "Wild Ramblings" I have discussed this activity, mostly discussing the gathering of plants that are found above the ground. This short article will concern itself with some of wild roots and tubers found in our area that may provide interesting and delicious food.

When I was about four or five years old I used to wander the fields with my grandmother. She had a keen eye, and though she had little formal education, she knew her plants well. Occasionally we would go out in the late spring and early summer to harvest wild onions (*Allium* spp.) so that she could use them in recipes that were held secret and dear to her heart. There are several different wild onions that grow in our neck of the woods. They are generally found in abandoned fields, meadows, and along woodlot edges. Amongst these wild onions are wild chives, wild leeks, and wild garlic. The wild chives and leeks have delicious leaves, that when picked early in the season, can greatly enhance any salad. All three have a delicious root that can be simmered slightly and eaten by itself, combined with other vegetables in sauces, or eaten raw, depending upon your taste. My grandmother used to use wild onions in one of her pickle recipes that won many fair prizes throughout Western Massachusetts.

Another delicious root is found attached to the plant Spring Beauty (*Claytonia virginica*, *Claytonia lanceolata*). This plant is easily identified. It often grows in dense clumps at the base of a tree in a

hardwood forest. The plant has a small delicious root that is prized by wild edible lovers throughout the northeast. This root has a unique chestnut/potato flavor when cooked. Many people prefer to prepare this root by brushing off the dirt, dropping it into salted, boiling water for fifteen minutes, peeling off the skin, and then enjoy the Spring Beauty root with butter or hot olive oil.

Yet another delicious wild edible root found in our area is that of Silverweed (*Potentilla anserina*). This plant is common to overgrown fields and former pastures. It is easily identified by its white undersides and long runners. The roots of the larger, older plants are those that are most useful. These long, narrow roots were thought very valuable by Native Americans. The root is usually steamed or boiled until just tender. They taste similar to parsnips with a very pleasant after taste.

Another common tuber that is found throughout our area is the Groundnut (*Apios tuberosa*). The early settlers of Massachusetts were introduced to this valuable wild edible by the Algonquians that inhabited much of the area. A string of tubers will be found attached to this plant under the ground's surface. This potato like vegetable are about an inch long for each tuber. They can be cooked much like potatoes, or dried and used as flour, particularly for bread. I like them steamed with butter or hot olive oil and vinegar.

One exotic root that is common to our area is that of the Yellow Water lily (*Nuphar* spp.). This aquatic flower can be found in many ponds, lakes, and bogs. The root is easily dug up. It is richest in starch and sweetest between autumn and late spring. The root is boiled or roasted, skinned in preparation. The sweet interiors can be used in soups and stews that will add flavor that will prove to be a pleasant mystery to unknowing consumers of this wild edible.

Half the fun of gathering wild edible roots and tubers is in getting dirty. Sometimes it takes some fortitude to keep digging around until the prize is found. Kids, in particular, marvel with this activity.

As with all wild edibles, be certain that you have correctly identified the plant before eating it. All the plants listed here are easy to identify using simple field guides or consulting with competent naturalists. When harvesting wild edibles, please be careful to harvest sparingly, leaving enough behind to insure future generations to these valuable plants.

Harvesting wild edibles can bring wonderful bounty to your dinner table, and bountiful memories to you life. I can still picture my grandmother, wearing a flowered pattern dress and straw garden hat, digging at a wild onion in a flowering meadow. She would be smiling that little smile to herself, knowing that all the other women in the fair competitions would be trying to figure out the secret ingredient in her pickle recipe.



## SPECIAL AND ANNUAL TOWN MEETING REPORTS

by D. F. Howland

It was a beautiful Saturday morning on May 6, 1995 when the Special Town Meeting was convened by Moderator Douglas Wilkins at 8:30 AM. A quorum of just over 5 per cent of the registered voters was present (about 26 people). There were eight articles, most of which were transfers to adjust accounts in arrears. However, one transfer was to spend \$2,000 for a new computer and printer in the Town Hall to replace inadequate equipment. The old equipment will be put to use by Earl Gleason, Fire Chief, and Jack Cable, Highway Superintendent, at the Town Garage. One article required approval to appropriate \$6,810 for the Veterans Benefit Account. The Town has to fund benefits approved by our Veterans Representative in Shelburne Falls and then is reimbursed the following year by the State in the amount of 75 percent of the cost. Heath has seldom had applicants for this benefit, but it is there for those who need it. The Special Town Meeting adjourned about 9:47 AM.

The Annual Town Meeting started at 9:05 AM with some 50 people in attendance, just a few more than the 10 percent requirement of 46. After elections were announced and reports accepted, Article 3, the budget article was discussed. A number of questions were raised and answered. The proposed total of \$1,137,176 was passed. Article 17 relative to the cost of reconstructing and equipping the Mohawk Trail High School was brought forward ahead of the other articles because time was needed to explain the proposals. James Morrissey, the School's architect from Springfield, gave a slide presentation and Phil Dzialo, principal, and Frank Brower of Heath explained details and answered questions. It passed unanimously. (The debt exclusion vote for the work passed last fall.)

The following articles passed:

Article 4 - \$5,000 to support the Preschool.

Article 5 - \$10,000 from Free Cash to reduce taxes in FY96.

Article 6 - Authorized the Treasurer to enter into compensating balance agreements.

Article 7 - To return \$1,923 from the sales of logs and cutback to the Highway Department.

Article 8 - \$5,000 to the Stabilization towards the purchase of a fire truck.

Article 10 - \$5,000 to fund an Incentive Award program to encourage participation in the Volunteer Fire Dept.

Article 16 - For the Mohawk Trail Regional School District to incur debt in the amount of \$3,560,000 for equipping and reconstructing the Buckland-Shelburne Elementary School.

The following articles were amended, passed over

or voted down:

Article 9 - To accept a gift of land from Pat and Henry Leuchtman to the Trustees of the Heath Free Public Library. The article was amended to include the sale of such land be used for the purpose of building and/or renovating the library.

Article 11 - To petition the Legislature for a Recall Vote Petition for elected officials was voted down.

Article 12 - To petition the Legislature to allow the Board of Selectmen to appoint a Treasurer was amended to have such appointment begin after the resignation or end of term of the incumbent.

Article 13 - To petition the Legislature to allow the Board of Selectmen to appoint a Tax Collector was amended to have such appointment begin after the resignation or end of term of the incumbent.

Article 14 - This article proposed establishing a revolving account (which requires Town Meeting vote) for a new committee of five members appointed by the Board of Selectmen to finance the upkeep of the John M. Shapiro land and expenses incurred in forestry and/or outdoor site. (The land is a 330 acre site off Flagg Hill Road). After considerable discussion about the use of the land the article was passed over. The Board of Selectmen indicated that further study and hearings were advisable.

Article 15 - To amend the Town's by-laws to change the date of the Annual Town Meeting was passed over.

After all the articles were acted on Moderator Wilkins asked if there were other topics for discussion in accordance with Article 18. The Assessors agreed to examine provisions in the statutes relative to abatement practices as suggested by the Tax Fairness Committee. The Reverend Richard Gary asked the Board of Selectmen to send get well letters to Esther Dickinson and Charles Kades, both of whom are seriously ill. A resolution offered by Dave Howland relative to asking the Mohawk Regional School District administration to limit salary increases to a cost-of-living guideline was supported. The issue is that Towns in the District have limited salary increases for town personnel to about 3 percent while school personnel have been getting more. Jack Cable announced that the Heath Enterprise Council, which is made up of local business persons, was reforming. He welcomed newcomers.

It was nearly 1 PM when the meeting adjourned.

• FUEL OIL • KEROSENE • BURNER SERVICE

**FRANKLIN-WARE**  
**RICE**

OIL & PROPANE - 625-6470

27 BRIDGE ST. SHELBURNE FALLS, MA



## SELECTMEN'S REPORT

by D. F. Howland

The main business of the Selectmen during April was to prepare for the Special and Annual Town Meetings held Saturday, May 6 at the Community Hall. (The results of those meetings are reported elsewhere in the *Heath Herald*.) Elections preceded the Town Meetings on May 5. Rollo Kinsman was elected to a three year term as Selectman to replace Richard Giard, who chose not to run again. The Board of Selectmen expressed their thanks to Dick for his dedication to the post and able service to the Town.

At the Selectmen's meeting on May 16 they voted to assign their duties as follows:

Hilma Sumner  
Chair of the Board  
Highway Dept. liaison

Rollo Kinsman  
Mohawk Municipal Advisory Comm.  
School Building Committee  
Tri-Town Landfill Committee  
Veteran's Rep.

Dave Howland  
Secretary of Board  
County Adv. Board  
County Plan. Board  
County Trans. Authority  
County Bldg. Inspec. Cooperative  
Americans with Disabilities Rep.  
Safety Coordinator  
Licensing Board

In addition Joyce Karpinski continues as Heath's representative to the Economic Target Area Council in Greenfield. Most other appointments will be made in June with an effective date of July 1.

The construction contract with D. A. Sullivan and Sons of Northampton for the new elementary school was signed by all parties and Steven M. Kehler of Amherst was engaged as Clerk of the Works. These agreements were completed in April; work is well underway now. Temporary loans will be used to pay bills for now; in due course repayment of those loans will be funded through the Farmers Home Loan, a federal agency. The land swap with Earl Gleason for one acre adjacent to the twelve acres purchased from Ernest and Alli Thane has been completed. (The land was needed to comply with septic system design criteria.) Jack Cable, Highway Superintendent, has been working with the State Highway Department to get special funding for the improvement of Jacob's Road, the dirt road from Route 8A to the school site. We hope this comes through since we originally expected school construction money to pay for it. Jacob's Road has been made one-way temporarily to accommodate the heavy traffic caused by the contractors. Also, Jack has worked with the power and telephone companies to get utilities in place. The Board of Selectmen held a "pole hearing" to affirm the location of poles and underground wires to the school. We appreciate his taking the initiative in these matters.

With regard to efforts being made to reduce the heavy burden of taxes on the Town, the Tax Fairness Committee has visited representatives of the Department of Revenue and the Department of Education in Boston to develop data and arguments to support special legislation to obtain more State Aid for Heath. The Committee is chaired by Harvey Carter. Other members are Arthur Schwenger, Leighton McCutcheon, Debra Porter and Jennifer Giandalone. Catherine Heyl, Business Manager of the Mohawk Trail Regional School District (MTRS), has been invaluable with her counsel and understanding of the Educational Reform Act. Certain provisions of this Act, which we believe are unfair to Heath, are at issue. At the same time the Board of Selectmen and the School Building Committee are seeking increased

### FRESH WINDS FARM

Paul & Marcella Lively & Sons

Excavating - Loam - Sand Stone 337-4331

**\*\*SCREENED LOAM A SPECIALTY\*\***

### CHARLEMONT TV, INC.

*Zenith*

Sales & Service

56 Bridge St. • Shelburne Falls, MA 01370 • 413/625-6040

### CARLISLE WALLCOVERING

PAPERHANGING & INTERIOR PAINTING

MICHAEL CARLISLE

413-625-9733

*Transitions*  
— come change with us —  
**A FULL SERVICE SALON**

625-6855

39 BRIDGE ST. • SHELBERNE FALLS, MA • 01370

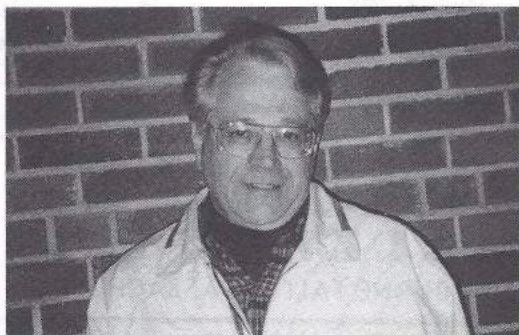


reimbursement of school construction money. Budge Litchfield, Bob Clancy of the MTRS District and Dave Howland attended a hearing before the Education Committee to argue Heath's case. While our recommendations were sent to a study committee, we were successful in having legislation attached to the Senate Budget Bill. We expect to have a sense of success (or failure) by early June on both these efforts. Senator Jane Swift and Representative Carmen Buell have been very helpful. We should mention also that Senator Stan Rosenberg and Representative Steve Kulik have been supportive in this matter.

Recently the towns of Shelburne and Buckland cooperated in winning a grant of \$528,565 from Small Cities Program. Most of the money is dedicated to specific public facilities improvement, but there is a provision for a director, who among other duties, will interface with surrounding communities to develop, coordinate and execute an economic development plan for the area. Preliminary meetings have been held under the auspices of the Shelburne Falls Business Association. Locally, there has been a revival of the Heath Enterprise Council with the encouragement of Jack Cable.

Joyce Karpinski is putting the finishing touches on the Personnel Handbook/Job Description project that was funded by the Peer-to-Peer Program sponsored by the Massachusetts Municipal Association. She is coordinating efforts to obtain funds for improving handicap accessibility to the Community Hall and Town Hall and for using County Jail inmates to do repair work at the Town Garage. Unfortunately the Town was advised that funding of an approved project to beautify Heath Center was withdrawn by the Federal Government.

The Board of Selectmen approved traffic signs at the intersection of Taylor Brook Road and Swamp Road/Flagg Hill Road. There will be stop signs on Taylor Brook Road and yield signs at the other two roads. The Board also reaffirmed policy that signs of a more personal nature such as "Go Slow Children" may be purchased by individuals through the Highway Department. These signs have to meet State criteria and be installed by the Highway Department.



**NEW SELECTMAN - FRANCIS ROLLO KINSMAN**  
(Photo by Susan Silvester)

## PERCS, PERMITS AND TRANSFERS

### PERCOLATION TESTS

Earl Gleason reports that two perc tests were conducted in April, one new and one repair.

### BUILDING PERMITS

There were no permits issued this period.

### DEED TRANSFERS

Harriet C. Read Estate of Greenfield, Joseph T. Bartlett, Jr., executor, to Patricia A. and Henry Leuchtman, East Dell Road. No consideration.

Rachel Pare of East Hartford, CT to Normand A. Terault, East Brook Drive, lots 2 & 3, \$2,500.

Raymond Mercier to Lucille L. Mercier of Chicopee, Mohawk Estates, lots 31-34, no consideration.

Paul L. and Sigrun Coty to Albert Gray and Rita Gray, Jackson Stage road, \$37,000.

Mary L. Sherman to Martha R. McDonough of Leesburg, VA and Leland L. Sherman, Judd Road, no consideration.

Robert S. Bergquist to Christine F. Bergquist of Amherst, Bray Road, parcels A and B, \$1.

Peter P. Webber of Vernon, CT to Mohawk Estates Property Owners Association, Inc., Mohawk Estates, Lot 7, \$1.

Commercial Credit Corporation of West Springfield to Karl I. and Natalie F. Dambrosio, 3 Brunelle Road, \$47,200.

Roger W. and Ana J. Rice of John S. Hoffman and Kathryn K. Stevens of Dorchester, 399 West Oxbow Road, also in Charlemont, \$219,000.

Rita Gray to Albert and Rita Gray, Jackson Stage Road, less than \$100.

## NORTH RIVER WINERY



Jacksonville, Vt.

Come visit the winery, Take our short tour,  
And then taste our locally made wines. (No charge)

|                                              |                                                        |
|----------------------------------------------|--------------------------------------------------------|
| Late May - Dec.<br>Open Seven Days<br>10 - 5 | January - Late May<br>Open Fri., Sat. & Sun.<br>11 - 5 |
|----------------------------------------------|--------------------------------------------------------|

802-368-7557



## HEATH HIGHWAY DEPARTMENT

by Jack Cable, Superintendent

The new one-ton Ford truck was finally added to the fleet at the end of February and is a welcome piece of equipment. We did a little plowing and sanding with it before the weather changed to spring. Everything is functioning smoothly and the truck's performance is outstanding. The versatility of this vehicle makes for better working conditions and faster, more economical job functions. The dump body is especially handy to move small loads of patch, gravel and tools. After it arrived I had this truck plus the '91 and '93 International trucks lettered with "Town of Heath Highway Dept." We have also installed a dump body on the '91 International. We have designated the '81 Chevrolet to a winter only truck with the wing tower and sander permanently on this chassis. Our other equipment is in good working condition although the 1985 loader is nearing the time to trade for a new model. This piece of equipment is the most important and most used piece of equipment in the department.

I would like to thank the residents for their efforts in responding to the recycling at the Transfer Station. The metals bin is back plus so are our summer hours - open on Wednesdays. Someone discarded two TV sets on Branch Hill plus another on 8A near the Charlemont line - we are looking for information on who did this - call Tom Rabbitt or the Highway Department if you know who dumped them.

Jacobs Road is now officially a ONE-WAY road. Due to the traffic to the school site and the narrowness of the road, this was done for the public's safety. Also signs will be installed at the Taylor (Colrain) Brook - Flagg Hill - Swamp Road intersection. Persons must STOP either way on Taylor Brook and Yield on Swamp and Flagg Hill. Caution is advised at this intersection as is every intersection in town. PLEASE slow down when approaching road work areas - have respect for the persons fixing YOUR road. Another road crew worker was killed recently in this state - we certainly don't want it to happen here. SPEED KILLS!

The Highway Department crew recently attended a snow plow seminar sponsored by Bart Truck of West Springfield and hosted by the Buckland Highway Department. I attended the annual meeting of Berkshire County Highway Superintendents; the annual meeting of Massachusetts Highway Association; Baystate Roads "Survey - Map" seminar and Franklin County chamber of Commerce "Legislature Breakfast". Our legislators are playing games with our highway and gasoline tax money again. The are "holding-up" our second half of Transportation Bond again plus not releasing the gas-tax money that we all voted for last fall. - Remember Question 8? The dig in Boston is funneling the money which we need for our roads. Call your legislator and express your dismay at this kind of abuse - do you like driving on terrible roads and deteriorating bridges?

Avery Brook bridges and Avery Brook Road from the town line to the center are being engineered and hopefully action could happen - at least on the bridges - this summer.

Have a good summer and watch out for the highway crew - we are working for YOU.



NEW ONE-TON HEATH HIGHWAY TRUCK  
(Photo by Jack Cable)

Whether buying or selling  
I am here to serve all your  
real estate needs.

*Specializing in the hilltowns of West County!*

D. WILLIAM  
**pratt**  
REAL ESTATE

Wanda Mooney, REALTOR  
(w)773-5488 (h) 337-8344

*at the Bridge of Flowers!*  
"Now open at 6:00 AM  
every day for  
delicious breakfast starts."

OPEN 7 days a week



**MCCUSKER'S**  
**MARKET & DELI**  
SHELburnE FALLS, MASSACHUSETTS

*Quality Foods*

CALL 625-9411 for Deli Orders



## FIRE DEPARTMENT REPORT

by Earl Gleason, Chief

The Fire Department has been extremely busy lately. On April 4, four first responders and two EMTs assisted Charlemont Ambulance with a man who was ill. April 7 saw three firefighters respond to Charlemont for a Mutual Aid call. Charlemont Ambulance and firefighter and an EMT responded to Colrain Brook Road for a man who was ill. Eight firefighters and the brush truck fought a 1/2 acre brush fire on Number Nine Road on April 17. April 20 saw three firefighters and the tanker respond to Charlemont. The call was cancelled enroute. Six firefighters and the brush truck responded to Colrain on April 22. Two acres were burnt when a permit fire got away on Branch Hill Road on April 27. Ten firefighters, the brush truck, and tanker responded to this incident. April 30 saw Charlemont Ambulance, two first responders and three EMTs aid a girl on Route 8A that was having trouble breathing. Also on the thirtieth, two firefighters went to Mohawk Estates for public service detail. May 2 saw two EMTs and a firefighter respond to assist Shelburne Falls Ambulance with a man who was ill. May 6 saw five firefighters and the brush truck go to Flagg Hill Road for a 1/2 acre brush fire. The next day, four firefighters and the brush truck responded to Colrain for a brush fire. The Charlemont Ambulance, 2 firefighters, and two EMTs assisted a lady who was ill. On May 27, two EMTs assisted Charlemont Ambulance with an Avery Brook Road lady that was feeling ill. May 29 saw Engine 1 and four firefighters respond to an auto fire on Avery Brook Road. This fire had been extinguished on arrival.

The Fire Association met on two occasions, EMS Association met once, two drills were held and CPR recertification class. The chief attended two fire schools and one seminar on oil burning equipment.

The fire chief attended ten meetings of which eight were out of town. Six permits or inspections were conducted or granted.

### Richard A. Sumner

Journeyman Electrician  
Mass. License #E22622  
Vermont License #J1245  
RFD #2 Box 517, Shelburne Falls, MA 01370  
413-625-8239

### Heath Brook Studios Glass and Baskets

"Bob and Jayne Dane"  
By Appointment Year-Round In Heath Center  
**337-5736**

## HEATH BUSINESS MEETINGS BEGIN

by Laurie Wheeler

Two meetings have been held to discuss forming a Heath Business Association. Attendance has been good at these meetings, with an initial 16, then 23 people. A number of ideas have been discussed including the creation of a Heath Business Directory, which would list businesses in town, as well as a Business Procedures list. The latter would help those just starting out with their businesses.

A Board of Directors has been formed, with a representative from each of the following business categories; Services, Wanda Mooney; Agriculture, Alicia Tripp; Arts & Crafts, Frederick Burrington; Contractors, Brian Vilbon. This group is presently meeting on a weekly basis to determine goals and objectives of a Heath Business Association. They will present their findings at the next meeting on Wednesday, June 7 at 7:30 PM at the Heath Community Hall. If you are interested in finding out more about a Heath Business Association you may call any of the above people or Jack Cable, or attend the upcoming meeting.

### Bob DeLisle Electrician

Prompt, Courteous, Reasonable

Lic. #E34969

**337-5716**



### RETHREADS

FINE NEW & USED CLOTHES

**LARGE SELECTION OF MEN'S  
WOMEN'S and CHILDREN'S CLOTHING**

SEASONAL CONSIGNMENTS ACCEPTED

Tues-Sat 9-5

Thurs 9-8

14 Bridge St., Shelburne Falls, MA 625-9759

Your independent Insurance Agency. . .  
For all your insurance needs.



**Blackmer  
Insurance  
Agency, Inc.**

1000 Mohawk Trail  
Shelburne, Massachusetts 01370  
Tel. 413-625-6527





## TOWN NEWS

by Joyce Karpinski

### NEW ENGLAND POWER VEGETATION MANAGEMENT

New England Power Company has informed the town that they will conduct vegetation management treatment on rights-of-way which pass through Heath. The foliage application and additional preparatory work will take place between June 12 and July 31, 1995. Follow-up treatments may be necessary on selected sites between October 2 and December 22, 1995. The New England Power Company's Yearly Operational Plan and maps showing the rights-of-way to be treated can be viewed in the Town Hall office.

### HEATH'S NEW DOG OFFICER

On May 6 at the Annual Town Meeting, Michelle Howe of 8A North was sworn in as Heath's new Dog Officer. Michelle can be contacted at 337-8410.

The Board of Selectmen would like to thank Carl Herzig, outgoing Dog Officer, for his service to the Town of Heath.

**Your New Glasses Are Ready...**  
**And Your Second Pair Is... FREE**  
Eye Exams Available

WITH THIS COUPON

**FREE** Second Pair of **EYEGLASSES**

(WITH PURCHASE OF A COMPLETE PAIR)

Buy one pair of glasses at our regular price and get the second pair of the same prescription from our special selection, **ABSOLUTELY FREE!**

Includes first quality frames and single vision, clear, uncoated, 1st and 2nd division lenses. Offer precludes previous discounts.

Hampshire Mall  
(across from K-Mart)  
Hadley  
584-8324

**Vision Showcase**

36 State St.  
(near Bridge of Flowers)  
Shelburne Falls  
625-9898

### HEATH HERALD

Box 54  
Heath, MA 01346-0054

FORWARDING & ADDRESS  
CORRECTION REQUESTED

Bulk Rate  
U.S. POSTAGE  
PAID  
Permit No. 11  
Charlemont, MA 01339

## PEOPLE IN THE NEWS

Christine Gilbert recently graduated from Keene State College, Keene, N.H., with a double major. She received a Bachelor of Science degree and a second degree in Occupational Health and Safety. During her Senior year, she did an internship for Foss Manufacturing Company in Hampton, N.H., creating a work safety orientation program for their 600 employees. She also received a 4.0 grade average both fall and spring semesters. During her four years at Keene State she has been an active member of the Greek Sorority Tau Phi Xi. She has accepted a position in a Framingham, Ma Company working as a consultant covering the New England States. She will be living in Manchester, N.H.

### IMPORTANT

The street listing is an annual census of the population in order to assess the needs of the town. If you are not on this list, you will not receive any important or pertinent mailings sent out by the different town departments. These are designed to inform you of processes, procedures and events relating to town government, school issues, roads and town functions.

Please contact the Town Clerk, June Day at 337-4934, if you have not returned your street listing form or if you have not received one.

Thank you.  
The Registrars



**Charlemont Pizza House**  
Main Street - Route 2  
Charlemont, Mass.  
Phone: 339-4472

### PETERS GENERAL STORE

No. Nine Road, Heath, MA • 337-5501



#### LOCAL MAPLE SYRUP FOR SALE

Video Tapes and VCR Rentals  
Movie Rentals - 2 for the price of 1 on Tuesdays & Wednesdays

- |           |            |                |                |
|-----------|------------|----------------|----------------|
| • Wine    | • Chips    | • Ice Cream    | • Cough Syrups |
| • Liquor  | • Pretzels | • Frozen Foods | • Aspirin      |
| • Soda    | • Popcorn  | • Breads       | • Bandages     |
| • Cheeses | • Crackers | • Meats        | • and more     |

Deli Case • General Groceries  
Snacks • Sunday Papers  
Video Tapes & VCR Rentals • Gasoline • Diesel • Kerosene  
Worms and Crawlers • Blue Seal Feeds  
Nuts, Bolts, Nails, General Hardware • Brookville Gloves

**HOURS: Monday - Saturday 8 am - 7 pm**  
**Sunday - 10 am - 7 pm**

77 Years of Service to the Hilltowns - 1913-1990