



VOLUME 18 NUMBER 2

JUNE/JULY 1996

HEATH HERALD

HEATH'S FIRST NEWSPAPER

50¢

CENTER CEMETERY WORK BEE

by D. F. Howland

On the dull, rainy morning of Saturday, May 4th eight cheery souls brought forth their picks and shovels to correct winter's ravages on the Center Cemetery. Maintenance was badly needed...headstones had either fallen over or were leaning at crazy angles and frost heaves had taken their toll on the grounds with sunken areas that made walking difficult for visitors. The Cemetery cried out for some tender loving care.

The Bee was arranged by the Reverend Dick Gary of the Cemetery Commission. The work crew, who toiled three solid hours, consisted of (left to right in the accompanying photo) John Gary, Dick Gary, Paul Burrington, Fred Burrington, Roger Clark, Rollo Kinsman, Ken Stetson and Dave Howland. Well, almost three solid hours except for intermittent jokes, stories and leaning on shovels. Paul Lively donated a pile of sand and Dave Howland brought along his bucket loader to carry the sand to work stations. First, the earth was dug up around the stones and then while one or two workers held them up straight sand was thrown around the base and tamped down. Then the sod was replaced to make everything neat and tidy. Approximately fifty stones were straightened.

One can't go to a cemetery without reminiscing. Rollo's forebearor, Samuel, was the first Kinsman to arrive in Heath and there are many Burringtons, Stetson and Clarks in the Cemetery that reminded the workers of

their heritage. The Temples, who owned a lot of property in Heath at one time including the homes of Dick Gary and Dave Howland, were well in evidence.

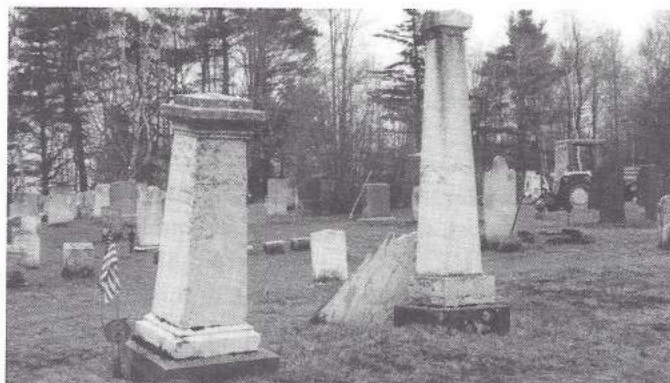
A second Bee was held on ay 18th. Another group headed by the Sumners has been working on South Cemetery while the Crowningshields take care of North Cemetery and the Heath Association Cemetery that is nearby. The Heath Historical Society has published a book entitled the "Heath Gravestone Records" that was compiled by Newland Smith. It contains a history of the Town's cemeteries and a computerized list of those interred as well as maps designating the location of the burial plots. (The book is available for purchase @ \$15. Call 337-4980 to obtain a copy.)



CEMETERY WORK BEE CREW
(Photo by Pegge Howland)



"DIED"
(Photo by Pegge Howland)



"THOMPSON"
(Photo by Pegge Howland)

MILESTONES

by Edith C. Royer

Born April 2, a son, Nathaniel Bradley, to Catherine and Roger Peace of Schroon Lake, New York, grandson of Linda and Frank Osciak of Greenfield and Rhodesa and the Reverend Roger Peace of Heath, great-grandson of Mildred and Frank Osciak of Turners Falls and June and Bill Peace, Jewel Somerville and George Woodley all of New York.

Born April 17, a son, Joshua Bryan, to Barbara and Gregory Rode of Heath, grandson of Mary and Edward Muenkel and Dianne and Robert Rode, all of Heath, great-grandson of Evelyn Loretz of Durham, North Carolina and Augustine Rode of Levittowne, New York.

Born April 24, twin daughters, Donna Ann and DeAnna April, to Brenda (Thompson) and Glen Sikorski, of Cadott, Wisconsin, grand-daughters of Virginia Vetromile of South Weymouth, Massachusetts. Brenda lived in town and drove school bus for several years.

Born April 29, a daughter, Melissa Megan, to Daphne and Kyle Clark of Hawley. Grandparents are Liz Parkinson of Greenfield, William Clark of Heath, Sally and Kenny Hunkler of Whitingham, Vermont and David Parkinson of Ohio. Great-grandparents are Darwin and Dorothy Clark of Hawley, Kenneth Heans and Llewella Parkinson of Canada.

Born May 2, a daughter Sydney Erica to Ree (Sumner) and Edward Martin of Greenfield. Grandparents are Brenda and William Stafford of Shelburne,

Hilma and Richard Sumner of Heath, and J. W. and Ginette Martin of Texas. Great-grandparents are Theodore and Erna Herzig of Colrain and Grace Stafford of Shelburne.

The parents of Nicole Den Ouden and Richard Hamilton announce their engagement. Nicole is the daughter of Beverly and Bernard Den Ouden of Heath. Richard is the son of Susan and Ernst George of Chance, Maryland.

Scott Emery Reynolds of Adams died April 19, 1996. He had been in failing health since January. He was born in North Adams on November 7, 1953, the son of Erma (Reynolds) Brown and the late Donald H. Crowningshield. Besides his mother, of Heath, and his wife, the former Emma M. Sprague, he leaves a step daughter, Lisa Marie Volf of North Adams, a stepson, Anthony Phillips of Hickory North Carolina, three sisters, Donna Skiffington of Londonderry, Vermont, Darlene McDonough of Weston, Vermont, Doreen Moroch of Jamaica, Vermont, a brother Donald H. Crowningshield II of Defoniak Springs, Florida, a step granddaughter and several other relatives. Burial will be in Arms Cemetery in Shelburne Falls at a later date.

George L. Giard Sr., of Colrain died April 26. He was born in Heath, the son of the late David J. Giard Sr., and Anita (Potheir). He attended Heath Schools and Arms Academy. Survivors include his wife, the former Jeanne Rainville, four sons, George L. Jr., of St. Cloud Florida and Michael A., Paul A., and Mark A., all of Colrain, four daughters, Patricia McReynolds and Donna Hyytinen both of Heath, Debbie Seibert of Greenfield and Sandra Giard of Brigantine, New Jersey, five brothers, Raymond A., of Deland, Florida, Donald A., of Colrain, John A. Sr., of Oklahoma, Nebraska, Richard R. of Heath, and James R., of Shelburne, two sisters, Sister Mary of the Immaculate Conception of Holyoke and Rita M. Lollo of West Springfield, 26 grandchildren, a great-grandson and several nieces and nephews. A son, Michael, died in 1957. Burial was in West Branch Cemetery, Colrain.

HEATH HERALD

HEATH'S FIRST NEWSPAPER

Managing Editor	Susan Silvester
General Ed. & Layout	Pegge Howland
Staff Reporters	Edith Royer
	Laurie Burrington
Columnists	Elsa Bakalar
	Michael Coe
	Bill Latrell
	Carroll Stowe
	Jesse Seaver
	Laurie Burrington
Advertising	Deborah Phillips
Circulation & Business	Deborah Phillips
Typeography	Alice Kinsman

The Heath Herald is published six times a year in April, June, August, October, December and February.

SUBSCRIPTION RATE - One year: \$5.50 (payable in advance by check or money order.)

ADVERTISING RATES - Display ads: \$4.80 per column inch (discounts on six or more insertions.)

CLASSIFIED ADS - \$2.00 per line.

Send all correspondence to: The Heath Herald, P.O. Box 54, Heath, MA 01346-0054.

EARN EXTRA MONEY
SELLING 1 OZ. COLOGNE SIMILARITIES
Write "Beach Gifts Ltd"
P.O. Box 4208, Oak Beach, NY 11702

ALAN'S ALMANAC

by Alan Nichols

	Precip	Snow
Nov	6.21	9
Dec	2.47	23.3
Jan	6.70	33.5
Feb	2.29	13.5
Mar	2.31	16
Apr	7.82	17
May	6.24 (As of May 30th)	

We had snow on May 6th and 12th!
Snow total 112.3 inches.

LIBRARY LINES

by Laurie Wheeler Burrington

In my four months as librarian, I have been discovering the "behind the scenes" action of running a library. Don, Michelle, and Alli, who graciously allows me to call her at home, all have fielded by questions and been quite helpful.

Kim Richter has again been elected to the three member library trustee board, and continues working with Mary Boyd and Maureen O'Malley.

Mauren and I recently attended a Library Legislative Breakfast to meet with local legislators and other library personnel to discuss current library legislation. Because of the dawning of this age of technology many libraries are unable to, by themselves, keep up with the necessary advances. If the proposed legislation, House Bill 4381, passes, the sharing of the commonwealth's library resources would become more equal because of restructuring of the current library structure and the implementation of a statewide electronic network which would link all of the libraries in the state. If interested, I have a copy of this "Strategi Plan for the Future of Library Services in Massachusetts" at the Library.

We did invite Representative Merrigan to stop by the Heath Public Library next time he is in town. I would like to thank the Friends of the Library for providing the funds for us to attend this function.

Because "the times are a 'chargin'", in a short while I will begin working with the Western Mass Library headquarters in Hatfield and with the library trustees on long range plans for the town's public library. At a recent trustees meeting, it was decided to ask a small group of people to work with us to explore options available to the library in terms of future growth and the library's whereabouts in our community. If anyone is interested in working with the library as a part of this research group please contact one of the trustees or me. Sign up will begin soon for the library's summer reading program. This year's theme is "Catch the Spark". To help promote youngsters' and young adult' reading during the lazy, hazy days of summer, this year's program will run from July 1 through August 15. Stop by the library to get more details and sign up!

And finally, the computer is up and running, and is available for library patron use. My many thanks to Henry Leuchtman for the many hours spent teaching me some of the basics on how to use the Internet.

The computer may be used for Internet access during regular library hours; there will be a sign-up sheet at the desk. If folks do not know how to use the Internet I will be having informal, and very basic, "how-to" sessions.

Richard A. Sumner

Journeyman Electrician

Mass. License #E22622 • Vermont License #J1245

HC2, Box 39 • Charlemont, MA 01339

(413) 337-4845

HEATH UNION CHURCH NEWS

by Pastor Roger Peace

It seems like just yesterday that winter was here - of course we did just have snow, so I guess that must be the reason. But, the trees and grass are turning green, the flowers are starting to bloom, and the signs of new life are abounding. I am so glad for the changes in weather. It reminds me of the many changes in my own life and others as well. I am also glad these changes are directed by One who has much greater knowledge and authority than I.

Speaking of changes - there have been a few lately in my life. Our oldest son and his wife had their first child. Our youngest son graduated from high school and then in September - both Jason and Brad will be leaving for Word of Life Bible Institute.

Changes are also taking place at Church. Damage has occurred to the structure of the church because of a leaky roof - so new beams need to be installed. Music is of utmost importance at Church - so new hymnals are being ordered. The Heath Ladies Aid installed new flooring in the kitchen at the parsonage and new carpet was installed in the study. Special thanks to the Heath Ladies Aid.

This month we are having a couple of special weekends. First we will celebrate Father's Day by having our Sunday School participate in the service. Our fathers will be honored that day as well. Then on the 22nd of June we are having a Quartet come to sing for us. The Cornerstone Quartet will be singing at 7 PM at the Church. All are invited to come. The following day, Sunday, at 12 PM, we will be having a picnic at the fair grounds. We will have a fire for a cookout and play some games. Sounds fun - hope you can come!

Then in July the Church is sponsoring a Craft Fair which will be joined by the Heath Ladies Aid sale as well. Any questions can be directed to Ruth Corey.

We hope and pray you have a safe and great summer. Don't forget to go to church each week. If you can, join us at 10 AM each Sunday. We would welcome your visit. Plus - e have a nursery now - so you can enjoy the worship easier if you have small children. See you Sunday.

CHARLEMONT TV, INC.

Zenith

Sales & Service

56 Bridge St. • Shelburne Falls, MA 01370 • 413-625-6040

• FUEL OIL • KEROSENE • BURNER SERVICE

FRANKLIN-WARE
RICE

OIL & PROPANE - 625-6470

27 BRIDGE ST. SHELBERNE FALLS, MA

HEATH PRESCHOOL NEWS

by Suzanne Crawford

"Time flies when you're having fun." That is how the saying goes, and it certainly seems true for us at the Heath Preschool. We've had a wonderfully fun and busy year, and it's hard to believe that it is nearly over. The warm spring weather was slow in coming this year, but we now are busy making the most of it with the tricycles, sidewalk chalk, sand box play, sliding, swinging and running, running, running. We've got some great runners this year!

Indoors, we have been busy planting and growing a variety of seeds and plants. We started with grass-hair people, by drawing a face on a styrofoam cup then planting grass seed to grow into the hair. Some of those "friends" are ready for a haircut already! The children also planted zinnia seeds to take home to their gardens for a summertime reminder of preschool. We have carrot tops and potatoes growing in water, and bean and corn seeds planted against the sides of clear plastic cups, allowing us to watch the seeds sprout and the roots and leaves grow. We have also had pussy willows, forsythia, woodland plants, mosses and wildflowers to examine and enjoy as spring has progressed.

This spring we have learned about ourselves: our feelings; parts inside our bodies, such as bones, heart, etc.; and ways to take care of ourselves, like tooth brushing. We have also talked about some ways that people with disabilities learn and communicate, including Braille and sign language. The morning class has had the opportunity to become friends with a young boy with serious physical special needs who joined our class in April. It has been wonderful to see the friendship and types of jobs that people do there. This year we toured Rowe School, complete with students, teachers, books, toys and furniture, as well as the nearly-completed Heath

School, where we used our imaginations to envision it as it will be in September. Our ride on the school bus, which the children love, affords us an important opportunity to teach about school bus safety.

Each child completed two very special books this spring: a journal with drawings and dictated stories begun in September, and a "year-in-review" book that includes drawings, paintings, and photos from throughout the year. As we complete our final parent conferences, it is an opportunity for both parents and staff to appreciate the growth that each child has made this year. In a small way these two books capture the children's accomplishments and progress. I feel honored to be part of these young children's lives, and their growth is truly remarkable.

I am beginning to plan for our move to the new Heath Elementary School. It promises to be an exciting time, with opportunities for cooperation with other grade levels and for greater inclusion in all-school activities. I am looking forward to being a part of a larger team of teachers, and will appreciate having the services of the school nurse, librarian, and others available. The newly hired teaching staff is now meeting weekly to begin planning - and the range of topics to consider is inspiring and sobering. Another bonus will be staying in touch with families who have "outgrown" the preschool. Pre-registration is now under way for children who will be three or four by August 31. Please call me at 339-4265 for information.

Although some things will change for the preschool by moving to the new school, other aspects will remain the same. We will still be funded by the state grant (application now in progress), tuition from families, the town's contribution voted at Town Meeting, and fund raising.

The preschool cannot leave the Community Hall without expressing appreciation to the town of Heath for

(Continued on page 5)



MORNING PRESCHOOLERS
(Photo by Suzanne Crawford)



AFTERNOON PRESCHOOLERS
(Photo by Suzanne Crawford)

the use of the hall and the great support that the town has given to the preschool over the years. The spacious and safe indoor and outdoor areas have been a great place for children to play, learn and grow.

Thanks are also due to the many people who have contributed their time, energy and talents to the preschool this year. Thanks go to members of the Advisory Council for their guidance in decision making and assistance with fund raising. Many parents have helped with driving on field trips, substitute teaching, fund raising, and maintenance projects. Special thanks go to Alice Lemelin who did a great job as custodian this year, and to Michelle Howe whose friendship and hard work added so much to our classroom. A big thank you goes to AJ Cycle for sponsoring the motorcycle ride fund raiser on our behalf. Plans are now under way for the children's raffle and dunking booth at the Heath Fair. We'll look forward to seeing you there! Until then have a safe and happy summer!

The Academy at Charlemont graduates one senior this year from the town of Heath. Khalis Uprichard has completed his sixth year at the Academy. He lives on Sumner Stetson Road and next year will be taking a year off to go to Boston where he plans to work as a photography assistant before attending college, possibly Goddard. His interests include technical theater, photography and teaching.

Charlemont • 339-4915

Jack and Beverly Cable
337-4454



COME UP AND
ENJOY THE REASON WHY.

It is hard to believe the year is winding down, which means it is a busy time for the PTP. Cochairs Deborah Lively and Mary Vilbon have put together a 1996 Rowe Elementary School Yearbook as a special gift to the children. Each and every child has one special memory of their own in the yearbook along with a full school picture taken by Dick Tower of Rowe. A copy of the yearbook will be donated to each town library for all community members to browse through. Come and have a good time at the Heath/Rowe community potluck picnic with family and friends on June 15th from 11 AM to 4 PM. (Rain date will be June 17th.) This celebration will be held at Pelham Pond in Rowe, where you will be able to go fishing, boating and swimming. Everyone from both communities is encouraged to come! On June 20, 1996 graduation from the Class of 1996 will be held at Rowe Elementary at 7 PM. At that time the PTP will present each of the students with a special gift. Our congratulations to the Class of 1996!!!

Back Row (L-R) Mrs. Christine Kovalchick, Andria Beaudoin, Robbie Hardy, Matt Crowningshield, Missy Boutwell, Lisa Burke, Tim Bradley, Maya Donelson, Steven Mead, Maryrose Shattuck, and Ms Elaine Marcellino.

Front Row (L-R) Alex Weston, Joy Tutrice, Abigail Lively, Cassie Hatch, Johanna Jette and Chrystal Reardon.



****SCREENED LOAM A SPECIALTY****

HEATH SCHOOL UPDATE

by Philip O'Reilly, Principal

We continue to make substantial progress in preparing for the new year. I am still involved in the hiring of new staff, but plan to complete all the hiring within the next two weeks. Both the Planning Team and the Transition Team have met recently and many people are working with me in planning for the fall. With the building so close to completion, I have moved into my new office. A phone has also been installed so if I cannot be reached, and you need to speak with me, please leave a message. I will be checking the machine regularly. The contractors have started the "punch list" items and the building really looks great. As always, if you are interested in seeing the inside, please drop by or give me a call.

Both the Planning Team and the newly hired teachers are meeting regularly as we plan for the fall. Teachers are meeting each Wednesday afternoon and members of the Planning Team are meeting every other Thursday from 4:00 - 5:30 PM. Both groups are looking at classroom size and classroom configurations. Each group is also talking about the creation of multiage classrooms. (Multiage classrooms will be those classrooms with children who span two grades.)

Present class size...but likely to increase. Kindergarten = 16, Grade One = 12, Grade Two = 17, Grade Three = 12, Grade Four = 12, Grade Five = 15, Grade Six = 10.

The Planning Team is also beginning work on creating a school mission and set of goals for the first school year. If you are interested in being a part of The Planning Team, please call me at 337-5307.

The following new teachers have been hired:

Deborah Porter. Many of you know and respect Deb for the wonderful things that she has done as a resident for the town of Heath and as a Lead Teacher/Head Teacher at the Center School in Greenfield. She brings a strong understanding of child development to the Heath School and is skilled in creating a very supportive and challenging classroom atmosphere. She is particularly skilled at teaching social skills. Deb has also worked with both teachers and parents in presenting many successful workshops throughout the country and has recently been studying Reggio schools, both in Italy and in the United States.

Roberta Murphy. Robbie has taught a combined first and second grade class at the Deerfield Valley Elementary School in Wilmington, Vermont for the past four years. She has been working on early literacy teaching and learning, math problem solving and social skills training while at the Deerfield Valley Elementary School. She is a Colrain resident and has served on the Colrain Elementary School Local Education Council and Social Studies Curriculum Committee. Robbie has a Masters Degree from Leslie College in Cambridge, Massachusetts and has experience as a computer coordinator for a small school in Eastern, Massachusetts.

David Matteson. David joins Heath after teaching ten years in the Monadnock Regional School District. Most recently he has taught both first and second grade. David also has a very strong background in early literacy teaching and learning and is a trained Reading Recovery teacher. (Reading Recovery is a very successful early intervention program for first grade children experiencing difficulty learning to read.) Most recently, David has been accepted as a Program Coordinator for the Literacy Learning Network and has experience mentoring other teachers in the Northeast around appropriate literacy teaching practices.

Kathryn Darrow. Kathryn has taught third and fourth grade in Florida and Savoy, Massachusetts for the past four years. She advocates a strong home/school connection and includes parents in many of the classroom events. She has taken children on Geology expeditions and has spent a great deal of time with her classrooms of children at the Williams College Museum of Art. She believes in cooperative learning and conflict resolution, studying the application of these principles to classroom learning. She has also studied in Germany, lived in Iran and recently visited Morocco. She is presently learning about Portfolio and Alternative Assessment with children.

Jorie MacLeod. Jorie joins us from Federal Street School in Greenfield where she has taught both grade four and five for the past eight years. Jorie is sensitive to students academic and social needs. She is a mentor teacher, working with teachers in the areas of science and technology applications in the classroom and is a DASH (Developmental Approaches in Science and Health) trainer for the Greenfield Public Schools. She has presented workshops in science, math and telecommunications. Jorie also has a Masters of Education from Leslie College and is most excited about teaching in a rural environment. She enjoys biking and gardening.

(Continued on page 7)



Back Row: Sue Crawford, Roberta Murphy,
Stephen Bechtel, Jorie MacLeod
Front Row: David Matteson, Kathryn Darrow,
Deborah Porter, Philip O'Reilly

(Continued from page 6)

Stephen Bechtel. Stephen is a recently certified teacher coming to us after having taught at the Hawlemont Regional Elementary School for the past two years. Stephen enjoys using the environment as a natural classroom setting for children. He has both a Bachelors and Masters Degree in Geology and is a graduate of the Post-Baccalaureate Teacher Preparation Program at the University of Vermont. Stephen has experience teaching fully integrated, inclusive classrooms at Hawlemont and is presently a Student Peer Mediation Coordinator. He enjoys many outdoor sports such as skiing, biking and canoeing.

Other newly hired staff include:

Wanda Musacchio. Wanda has been hired as our Library Manager. For the past eight years, Wanda has worked as the Library/Media Manager at Rowe Elementary School. Prior to her work at Rowe School, she worked as the Assistant Children's Librarian at the Greenfield Public Library.

Tim Lively. Tim has been hired as the Heath School's Custodian. Many know Tim as he has been a resident of the town all his life. He is joining the staff as a well-respected custodian at Mohawk Trail High School. He also volunteers as an E. M. T. for the town of Heath.

Kathy Sprague. Kathy has been hired as the full-time Secretary. She is a graduate of Keene State College and is joining Heath School after working at Rowe School as the Physical Education Teacher and School Secretary for 16 years.

Gail Hall. Gail has been hired as the Cafeteria Manager. Gail joins the Heath School after 22 years in the Rowe School Kitchen. She has an Associates Degree in Hotel/Restaurant and Institutional Management. Many may remember her as the former owner of Yankee Fabrics.

Robin Booth. Robin has been hired as the School Nurse. Robin has been the Nurse at the Rowe School for the past year. Before Rowe School she worked as a Maternal and Child Health Care Specialist for the Northampton Visiting Nurses Association. Robin is also a certified Elementary Teacher.

Julie McCarthy. Julie joins the Heath School as the School Psychologist/Guidance Counselor. She has a degree in School Psychology and a Doctorate in Counseling from the University of Massachusetts. She has worked with many children and families from Heath and Rowe for the past 12 years as the School Psychologists from Rowe School. She also has a private practice in Greenfield.

Deborah Coffey. Deborah has been hired as Heath School's Art Instructor. She join us from Oyster Bay, New York after teaching for 8 years at the East Woods School. She also has worked at the Long Island Children's Museum as an Art Instructor. Deborah and her husband have recently purchased the Cummington Artist Community and will be moving to Cummington in several weeks.

HEATH SCHOOL CAMPAIGN UPDATE

by Susan Silvester

To date the Heath campaign to equip the new school with computers, a playground structure, library/media materials and other technology has reached \$57,000! The Mohawk Trail Regional School District and the Mary Lyon Education Fund have worked in partnership to raise the funds that were needed to properly open the new school. This money will be matched by the Commonwealth of Massachusetts during the construction phase of the project; thus, for every \$28 that was raised, the state will award the school \$72. The campaign committee was comprised of Bob Viarengo, Harvey and Mary Carter, Karen Moore, Deborah Phillips, Doug Wilkins and Susan Silvester. We would like to extend our sincere appreciation to everyone who has contributed to the fundraising campaign. Donations will continue to be accepted through the beginning of the next school year and a plaque on the wall will list those individuals whose contributions were \$100 or more. To make a donation, checks may be sent to the Mary Lyon Education Fund a P. O. Box 184, Shelburne Falls MA 01370 designated for the Heath School Campaign. The Mary Lyon Education Fund is a 501(c)3 community based non-profit organization and your donation is tax deductible.

MOVIN' ON UP

It is "Move-UP" night on June 17 for all students who will be attending the Heath Elementary School this coming September. This is an opportunity for parents and students to:

- Meet with their new teachers, fellow classmates and new principal;
- See their new classrooms;
- Ask questions;
- Tour the new school building;
- Socialize with the school community-at-large over dessert.

Please bring a dessert to share, if you can. You are also invited to bring a perennial or a set of summer annuals and plant them on the grounds. The fruits of your labor will then be in full bloom for the school's community-wide, grand opening on August 24; and of course, for the first day of school.

Move-Up night will be Monday, June 17 at 7:00 and run until approximately 8:30. This is an important opportunity for both parents and students. Please mark your calendar.



Charlemont Pizza House
Main Street - Route 2
Charlemont, Mass.
Phone: 339-4472

MARK YOUR CALENDAR FOR THE FOLLOWING SCHOOL EVENTS

June 15 11AM-4PM

Heath-Rowe Community-wide cookout at Rowe Pond

June 20 7 PM

Sixth Grade Graduation at Rowe

June 29th 1-5 PM

Plant Sale/Rose Viewing
at Leuchtman's to benefit Heath School

August 17 10AM-12 PM

August 18 2-4PM

Heath Elementary School Open House

August 24

GRAND OPENING

Community gala at the new school - music, potluck-dinner, time capsule, and art work unveiling

HEATH GRADUATES

Eight Heath students graduated from Mohawk Trail Regional School this year! Their names, colleges and intended careers or majors are listed below:

Nichole Rainville - St. Joseph's College, Maine - Elementary Education

Tara Kuehl - University of Massachusetts - major undecided

Anne Shattuck - Greenfield Community College - Nursing

Jaime Hyytinen - Greenfield Community College - Real Estate

William Nartowicz - Wentworth Institute - Architecture

Bradley Peace - Campbell College, NC - major undecided

Dianna Rode - Greenfield Community College, then Lyndon - Zoologist

Jeremy Gilbert - North Adams State College

Sawyer News Co.

Bridge St. • Shelburne Falls

Monday-Saturday 6:30am-5pm

Thursday 'til 7pm

Sunday & Holidays 5:30 am-12:30 pm

NEWSPAPERS • MAGAZINES
PAPERBACK BOOKS • CARDS
GIFTS • MOVIE RENTALS
ASSORTED CANDIES & FILM

Tel. 625-6686

Don & Kathleen Upton, Proprietors

MOHAWK TRAIL REGIONAL HIGH SCHOOL

by Magen MacDougall

The end of the year is always a busy time. The seniors have now graduated, and the rest of Mohawk is finishing up. The school year ends the 24th of June, the last week being final exams. Even with all the studying going on, there have been many things happening.

This year's performance by the Mohawk Theater Project, You Can't Take It With You, was held May 3 and 4 in the Mohawk auditorium. The play was as fun to watch as it was to perform, and those who did not attend missed out on a wonderful show. Each night drew about one hundred people. There were many people who helped to make the show happen behind the scenes, and the members of the cast from Heath would like to say thank you to Mrs. Brower. Her time and great help with costumes, make up and many other things helped to make the show go smoothly. Everyone in the cast had a fun time, and we are looking forward to next year. Hope that you will attend the third annual performance by the Mohawk Theater Project.

Mr. Kendzior's Ecology students went on a canoeing trip on May 17,18,19 on the Bog River in the Adirondacks. There were seven students who went, and three adults. We had around a five hour van ride, and then a three hour canoe paddle to the island where we stayed. The area was absolutely beautiful with no signs of people anywhere. At night we would lay in our tents and listen to the Tree Frogs, the Coyotes, and the Loons. One night we all went out in the canoes at night and looked up at the stars and listened to the Loons; there is nothing more peaceful than that.

This summer there will be French and Spanish exchange students staying with local foreign language students. This will be very exciting for the exchange students as well as the hosts, and both will be able to improve their second language, while making new friends. There will be a French student staying in Heath with Magen MacDougall for the month of August.

Your New Glasses Are Ready...
And Your Second Pair Is... FREE
Eye Exams Available

WITH THIS COUPON

FREE Second Pair of **EYEGLASSES**

(WITH PURCHASE OF A COMPLETE PAIR)

Buy one pair of glasses at our regular price and get the second pair of the same prescription from our special selection, **ABSOLUTELY FREE!**
Includes first quality frames and single vision, clear, uncoated, 1st and 2nd division lenses. Offer precludes previous discounts.

Hampshire Mall
(across from K-Mart)
Hadley
584-8324

**Vision
Showcase**

36 State St.
(near Bridge of Flowers)
Shelburne Falls
625-9898



WILD RAMBLINGS

by BILL LATTRELL

One of the greatest lessons in life that the natural world has taught me is that no living organism can stand alone. Each living thing is greatly dependent upon a whole host of factors that contributes to and ultimately becomes their environment. Sometimes living organisms develop a relationship between them by which there is a mutual dependency. This phenomenon is known as symbiosis.

Often symbiotic relationships develop between unsuspecting partners. Many of these go unnoticed. Such is the unexpected relationship between the black cherry tree and the ant (the exact species of ant is unknown to me). Who could have guessed that these two very different organisms have a relationship that is critical to each of their survivals?

The black cherry is a large hardwood tree that is native to our area. This mighty tree is very important in our forest. It grows to a height of 80 to 100 feet, and can attain a diameter of three feet. It is an important source of food producing large crops of fruit each year. These fruit are used by countless birds and mammals to provide a large part of their sustenance necessary to survive the long, hard winters found in our area. The mature black cherry is part of our northern hardwood climax forest and is prized by humans for its fine grained wood often used in furniture making. The tree is somewhat susceptible to disease and predation, especially when it is young. And yet it is difficult to imagine that this common tree might be rare, indeed, if it were not for the ant.

Ants are a very large group of insects that have many different species. They are known amongst entomologists as one of the most creative insects. They usually live in structured colonies where each ant is aware of his or her walk in life. Like honey bees, ants have a social order and certain tasks assigned to members of that order. Their lot in life, so to speak. Some ants are responsible for reproduction, some ants are responsible for food gathering, and some ants are responsible for protection, amongst other chores. Certain species of ants even raise and farm other insects, for instance one species of ants actually tend aphids and collect the sweet honeydew nectar that they produce. As all picnickers know, ants generally love sweets, and it is this love of sweets that created the symbiotic relationship between the ant and the black cherry tree.

It seems that high up in the branches of the mighty black cherry the tree produces a honeydew through a gland at the base of the stipule located near the joint of the leaflet branch and the branch. This honeydew is highly prized by ants and is ferociously gathered in the spring. The production of honeydew takes place when the branchlets are budding and through early maturation of the leaf. So the ant has but a short time to take

advantage of this delightful food supply.

During this same time period some leaf predators, primarily the tent caterpillar, becomes active in hopes of finding tender young leaflets to satisfy their enormous appetite. The tent caterpillar is capable of annihilating a tree's young leaf crop. If this occurs over a period of years it can prove fatal to the tree.

It is this coincidence of timing that proves advantageous to the black cherry tree. At the same time that the ants are foraging for honeydew, the tent caterpillar is seeking out the young leaf for forage. The tent caterpillars have to pass over the honeydew gland to reach the leaf, which is the one element of their approach that places them in great danger.

The ant is threatened by this caterpillar advance, probably thinking that the caterpillar is competing for the honeydew. The foraging ants will organize large armies of ants from their colony to do battle with the tent caterpillar. The battle goes on for days, pitting the will of the ants against the will of the caterpillars. Wholesale slaughter of caterpillars takes place as the ants wrestle these larger insects off the trees, often throwing the caterpillars right out of the tree to an 80 foot pluge. The battle continues until the tree stops producing the honeydew. At that point the ants go about their way, leaving the remaining caterpillars to forage on the leaves. By this time the leaves are primarily mature, and the tent caterpillars can do only minor defoliation due to the fact that they are reduced in numbers while at the same time the leaf biomass has greatly increased due to maturity of the leaf. The tree goes largely unharmed from the remaining leaf foraging.

And so the ant and the black cherry, two organisms that seem unlinked to the untrained eye, are critically dependent on each other for survival. The black cherry tree provides much needed honeydew to the ant colony, while the colony protects the tree from being defoliated by the tent caterpillar.

It is just another example of mutual dependency in nature, a plain and simple truth that humans should study and take to heart in our quest to understand our position in the natural world.

MCCUSKER'S
MARKET & DELI
SHELburne FALLS, MASSACHUSETTS

Quality Foods

COME BY FOR A
BART'S ICE CREAM CONE
OR SOFT SERVE.

NOW OPEN UNTIL 9:00 EVERY EVENING
625-9411



The Way It Is In The Country

*"If it's old, works well and has a purpose in life,
don't change it".*

by **CARROLL STOWE**

FEELINGS

Once again it seems to be time to overcome my writer's block and get some lines ready for the Herald.

I will never know if I have an over abundance of feelings or if I am blessed with a shortage.

I have fond memories of dear friends who in conversations stir up some great feelings of treasured times together. People, horses, dogs, cows, pigs, and good honest trucks, tractors, and all manner of machinery have helped me create a living for my family. These are targets for my good and bad feelings. I can only hope that I have more good feelings than ill.

As I am sure with most people no one could afford the paper to describe all of their feelings. Some of my fondest feelings are of the cherished most sincere feelings of a good handshake. If anyone who reads this thinks their handshake needs reworking, please consider putting more feeling into this great form of greeting.

Feelings are also connected to memories, and it is truly sad for me to recall my feelings of the fondness I always felt when I could watch a proud team of horses step up to the end of the trough of an ensilage cutter and stand still with the sound of the corn rattling up the pipe



NEW LAMB AT MARY AND HARVE CARTER'S
(Photo by Susan Silvester)

Harvey and Mary Carter of Hosmer road have recently begun to raise sheep. their farm will be one of the sites to visit for the annual Franklin Land Trust Farm and Garden Tour on June 29th!

into the silo with the throaty sound of a tractor sending this fresh cut feed into place. These feelings have made a most lasting impression on me. The sadness is that it won't happen again. As I have logged and cut firewood, feelings come over me as a chain saw makes the final cut to end the life of a growing landmark. It was the chain saw in my control that put the seven sisters landmark on Ford Hill Road in Rowe onto the ground. These seven white birches were a landmark cherished by many. Even though death had overtaken them, it was sad to see their end come.

How many teamsters might read this, I will never know but we could all share a wealth of experiences about the feelings that have come from the bits in the horses' mouths to the spread lines to the lines in hand. I will never tire of the tremendous surges of expressions that come through the leather ribbons in my hands. I've thought often of a smart stepping team on a sled load of logs and the whole unit of team, sled, logs and teamsters seems to be a living thing. The logs seem to quiver under foot and the tug chains put on them. Always a fine place to experience life.

I've never seen accounts of these kinds of feelings in print before, so it may not be explained properly. My feelings are not those of everyone, but in my being they can't be controlled.

With my poor penmanship my last column mentioned a cast hook. Several asked what a cast hook was. Should have read "...cant hook or peavey..". At some point in my life I'll attempt to do better. Hope all have a good batch of feelings.

Summer Programs



July '96
1 - 4 wks

Drawing - *Polly Anderson*

Theatre Workshop - *Gerrit White*

Modern Dance - *Ann Sorvino* Stenciling - *Ellen Zale*

Basket Making - *Ann Forcier* Algebra I

Publishing for Kids - *Kathy Wilkes*

QBASIC Programming - *Jim Owens*

Dried Flowers, Wreaths, & Pot Pourri - *Ellen Zale*

Multi-Track Recording - *Orville Giddings*

Computing Essentials for Adults - *Jim Owens*

CO-ED PROGRAMS FOR AGES 9 & UP

For more information please call

The Academy at Charlemont

(413) 339-4912

ROSE VIEWING AT END OF THE ROAD FARM

by Pat Leuchtman

My husband Henry and I are so happy to have returned from China in time to participate in the opening of the new Heath School. It has been so exciting to see the school near completion, and to see the energy of all the people who have worked so hard to make it a reality. We are also glad to be able to make a small contribution ourselves by offering our Annual Rose Viewing, the date on which we invite friends to come and view our antique roses which have such a short blossoming period, as a fundraiser for the Capital Campaign fund. This year the Rose Viewing will be on Saturday, June 29 from 1 to 5 PM. If it rains, the Rose Viewing will be held on Sunday, June 30 from 1 to 5 PM.

We planted our first old-fashioned roses in the spring of 1989. I had no plan for a rose garden, I just thought that it might be possible for the old fashioned roses to survive the Heath winters. And most of them have. Over the years we have planted more and more roses and The Rose Walk took shape, a grassy path lined with ancient roses like *rosa rubrifolia* with its striking reddish foliage and *rosa trigintepetala*, royal roses like *Konegin von Danemark* (the Queen of Denmark), *Madame Hardy*, and the *Duchesse d'Angouleme* and other hardy roses like *Isphahan*, *Celsiana* and *de la Grifferai*.

In addition to the roses which we bought, neighbors gave us shoots. *Alli's Pink* is doing fine, and I'm looking forward to seeing *Rachel* (Sumner) bloom for the first time this year. *Fred Burrington* gave us *Fred's Rose* and *Fred's Other Rose* which may take over the whole farm. It is a very vigorous rose. The Rose Walk is now a Double Rose Walk. We consider our Sunken Garden a testament to the Heath Fire Department which saved our house the Fourth of July night when our barn was hit by lightning and burned down. When the fire was finally and completely put out we had the debris hauled away and were left with a 40 by 60 area of clay subsoil within the three old stone foundation walls. That was in 1990.

I started chipping away around the edges, digging in all the manure, leaves and compost I could get. For two summers I mulched the whole area and grew vegetables in leaf beds. I also planted my first David Austin Rose in "The Hole", in handmade soil.

The Sunken Garden has also changed over time. We certainly no longer refer to it as "The Hole". Our daughter Betsy helped Henry build raised bed frames and while the garden is not finished - the boggy south end is waiting development as a water garden - it now looks like a garden, with vegetables, roses, herbs and flower beds growing in happy, albeit haphazard profusion.

To celebrate our return this spring we have been digging new vegetable and flower beds in the lawn in front of the Sunken Garden. It seems a garden is never done.

But no matter what we do, it is the roses that make

the biggest splash. We now have nearly 70 roses. Some are romantic albas, gallicas and damasks which have wonderful big blossoms and perfume, others I consider my hardy farm girls, and some are the new David Austin hybrids which have also proved hardy. We invite everyone to this year's Rose Viewing.

Tickets are \$5 and can be purchased at Peter's Store, Boswell's Books, ordered through the Mary Lyon Education Fund at P. O. Box 184, Shelburne Falls, MA 01370, or when you arrive. Make checks out to the Mary Lyon Education Fund. All proceeds will benefit the Heath School.

On June 29 the Franklin County Land Trust is holding its annual Farm and Garden tour which this year will be featuring Harvey and Mary Cater's Sheep Farm, Cables' Blueberry Farm, and Viarengos at Plover Hill, Jim Coursey at The Manse, and, of course, Elsa Bakalar's Garden. This will be a dazzling weekend for gardeners!

The Rose Viewing is always a gala event. This year lemonade and cookies prepared by Heath parents will be served. There will also be a plant sale. All proceeds from the party will benefit the Heath School. If you have any questions, call me, Pat Leuchtman, at 337-5316.

POST OFFICE

by Marcella R. Lively

Most of our boxes are rented out, save for two. When we first began in 1981, we had about 80 or so boxes rented. Occasionally, we have a slow day, but most days are pretty busy.

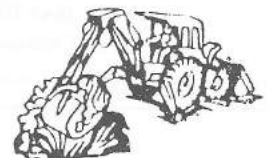
I still enjoy the work and people as I always have. It's a great place to work! We also answer the phone, take messages, etc. I was also responsible for getting all the 911 notification letters together, so I've been pretty busy lately.

Kris Nartowicz trained as an extra sub, and worked one day so I could attend granddaughter Maria Lively's 1st communion!

Maria spent her last vacation day with me in the Post Office, where I put her to work, under my supervision of course! She canceled all the mail, waited on customers, actually Alistair asked if she would wait on him, and she was quite happy to do so! She even stuffed all the boxes with John Olver's News-letters, what a help! A good time was had by all!

Welcome back to my snowbirds from Florida. It's good to have you all back!

Shepherd Excavation



Rte. 8A, Heath, MA

(413) 337-4215

HEATH BUSINESS DIRECTORY

Members of the Heath Enterprise Council

BALD MOUNTAIN POTTERY
625-8110

BRIAN'S CARPENTRY
Building/Remodeling, 337-4347

FREDERICK BURRINGTON
Artist, Commissions, 337-4426

NANCY BURRINGTON
Evergreen Information, 337-4425

PAUL F. BURRINGTON
Building Contractor, 337-4425

CABLE'S BURNT HILL BLUEBERRIES
337-4454

MARY AND HARVEY CARTER
Aged sheep's milk cheese, 337-5511

JAMES CERONE
Builder, 337-4210

JAMES COURSEY
Interior Designer, 337-0212

D. C. BUILDERS
Builder, 337-4705

ROBERT DELISLE
Electrician, 337-5716

RUSS DONELSON
Carpenter, 337-4460

DAVID FREEMAN
Organically raised beef, 337-4766

GIRARD-PETERS SUGAR HOUSE
337-5501

EARL M. GLEASON
Fire Equipment, 337-4948

HEATH BROOK STUDIO
Glass and baskets, 337-5736

ALVIN HILLMAN
Automotive Repair, 337-5576

DAVID HOWLAND
Consultant, 337-4980

L & S ENTERPRISES
Leisure Furniture Manufacturer
337-5505

PATRICIA LENTZ
Indigo Glassworks, 337-5375

JOHN MOONEY
Custom remodeling, 337-8344

WANDA MOONEY
Realtor, 337-8344

ALAN NICHOLS
Furniture Maker, 337-6665

PETERS STORE
337-5501

DANIEL RICHTER
Tile Installation, 339-4293

RUSSLIN SAW
Small Engine Repair/Sugaring Supplies
337-8704

JULIET SEAVER
Acupressure/Therapeutic Massage/Yoga
337-4866

LEE E. SHEPARD
Excavation/Septic Systems/Driveways
337-4215

RICHARDS STEINBOCK
Graphic design, 337-4746

RICHARD A. SUMNER
Electrician, 337-4845

SUNNY DAY BLUEBERRIES
Burnt Hill, 337-8369

PHYLLIS E. THANE
Book Binding, 337-4759

TRIPP'S BLUEBERRIES
Taylor Book Road, 337-4964

PAUL TURNBULL - JANICE BOUDREAU
Commercial/Wedding Photographers
337-4033

SUPPORT YOUR LOCAL BUSINESSES

If you would like more information about how to become a member of the Heath Enterprise Council,
please call Alicia Tripp at 337-4964

BEAVERS IN MASSACHUSETTS

by Jack Cable

I attended a Beaver Management Workshop on May 23 in Belchertown sponsored by the Massachusetts Division of Fisheries and Wildlife. The workshop reviewed basic beaver biology, behavior, population growth and management goals. Techniques to alleviate flooding problems, blocked culverts, and lowering dam heights were demonstrated. Ten years ago the Department stopped the practice of live trapping and relocating the beavers because the state had reached the saturation point in beaver capacity. Currently the only method used to regulate the population and prevent damaging from beavers is by shooting and trapping. The Department willingly gives permits to persons having problems with beavers - to shoot them. Trapping is a better management tool - supported by the Wildlife Department.

Trapping not only guarantees the death of the individual beaver (because of the stringent regulation on trapping in Massachusetts) it is not wasted. The trappers sell the pelts (a good market still exists in Europe) and eat the meat. Shooting not only is a waste of a resource - but there is no guarantee that the individual beaver is dead. These are the only controls on the beaver population. They have no natural enemies! One pair can produce 600 individuals in ten years. Our present population is at 24,000 to 28,000. If trapping is discontinued today, the beaver population will triple in three years.

Looking at the beaver plus other furbearing animals in the state that are increasing such as coyotes, muskrats (which causes thousands of dollars damage to cranberry bogs), fox and bobcat, I believe that we need to maintain our present trapping and furbearer management in Massachusetts.

TOWN ELECTION RESULTS

by Laurie Wheeler Burrington

172 voters turned out for Friday, May 10th Town elections. Voted into office were: Eileen Tougas as Heath's newest selectman with 92 votes, in a race with Brian DeVriese, who received 76. Harvey Carter with 116 votes and David Howland with 90 votes, won two three-year positions on the finance committee; incumbent Leighton McCutchen received 75. Incumbent Michelle Howe received 114 votes for dog officer to challenger Frederick Golba's 40.

Henry Leuchtman received 45 votes as a write-in for assessor, and Charles Kaempfer, presently a constable, and Bob Markert, both received the largest number of write-in votes for two constable positions. Other positions filled were: Doug Wilkins, Moderator; Val Kaempfer, Planning Board; Mike Smead, a two-year term for finance committee; and Kim Richter, library trustee.

Voted into office at Town Meeting were: the assessors as Fence Viewer; Jack Cable as Tree Warden; William Clark, Alanson Nichols, and Paul Liely as Measurer of Wood and Bark; Robert Gruen, Eva Pazmino and Budge Litchfield as Field Drivers; and Paul Lively as Sexton and Burial Agent.

LEARN TO SWIM

Once again the Town of Rowe has most graciously offered the children from Heath the opportunity to take swimming lessons at Rowe Pond this summer. Our town selectmen have also once again agreed to subsidize a portion of that expense.

This is a wonderful chance for school-age children to become comfortable with the water, learn how to swim and acquire safety skills. The two week program will be held the first two weeks in August. Details about the program will be sent home from the Rowe School and will also be reported in the West County News or you can call Laurie Pike at 339-4232. As in the past, Heath families are welcome to swim at the pond during the week-days. Thanks from the children to both the Town of Rowe and Heath for making this program possible.



RETHREADS

FINE NEW & USED CLOTHES

**LARGE SELECTION OF MEN'S
WOMEN'S and CHILDREN'S CLOTHING**

SEASONAL CONSIGNMENTS ACCEPTED

Tues-Sat 9-5

Thurs 9-8

14 Bridge St., Shelburne Falls, MA 625-9759

Whether buying or selling
I am here to serve all your
real estate needs.

Specializing in the hilltowns of West County!

**WILLIAM
pratt**
REAL ESTATE

Wanda Mooney, REALTOR
(w)773-5488 (h) 337-8344

Your independent Insurance Agency...
For all your insurance needs.



**Blackmer
Insurance
Agency, Inc.**

1000 Mohawk Trail
Shelburne, Massachusetts 01370
Tel. 413-625-6527



TOWN MEETING

by Laurie Wheeler Burrington

May eleventh's 17 article, five hour town meeting began with a presentation of Certificates of Appreciation. Chair Hilma Sumner explained that the selectmen wished to recognize a number of people for their years of service to the community; those receiving certificates were Earl Gleason, Catherine and Bruce Cromack, Alli Thane, and, in a surprise move, former selectman David Howland. Mr and Mrs. Cromack and Mrs. Thane were unable to be there to receive their certificates.

All articles passed with the exception of article 8 which was withdrawn. Included are: Article 3, the FY 97 budget of \$1,123,117; Article 4, the transfer and disbursement of \$5,733 from the planning board expense account to Town Garage Maintenance, Copier, Treasurer, Hired Equipment, Highway Materials, and Animal Inspector accounts; Article 5, a transfer of \$4,000 from the Veteran's Benefit Account to the Tax Taking account; Article 6, asking for special state legislation to allow Heath, Charlemont, and Hawley to jointly acquire and manage the parcel of land, formerly used as a landfill site by the three towns, located on Burrington Road in Heath, the eventual goal is to cap the landfill site. (Selectman Rollo Kinsman explained that Heath's percentage of the project is 20%, and that nothing will be happening with the site right now because it is such an expensive undertaking.) Article 7, appropriation of \$197,363.90 for funding technology and other items for the Heath elementary school; Article 10, the increase from three to five members on the board of health; Article 11, provision of a stipend of \$400 for the board of health chair and \$200 for each of the board of health members; Articles 13 and 13, to transfer \$55,000 from Free Cash and \$25,000 from the Stabilization Fund for a fire truck; Article 14, approval of \$90,000 for the purchase of a front-end loader for the highway department, less \$20,000 for its trade-in value and \$13,500 from the Machinery Earning account, resulting in a debt of \$56,500; and, Article 15, a transfer of \$20,000 from Free Cash to the Stabilization Fund.

On Articles 8 and 9, concerning the Shapiro property, voters decided that Article 9 be considered before Article 8. Article 8, submitted by the Selectmen, asked

that the Town adopt a "Memorandum of Understanding" between the selectmen and the conservation commission, historical commission, park committee, planning board and town highway department, allowing the creation of a committee to care for the Shapiro property. Article 9, submitted by petition, asked that the Town require the board of selectmen to hold public hearings to decide on the future usage of the Shapiro property. Brian DeVriese gave the Shapiro Land Study Group's history of what they had done: after interviewing a number of people the group decided the best use of the property would be to put it into conservation. He said this recommendation "had been rejected by two of the selectmen and has been hung up ever since." Selectman David Howland said that the original charge to the Shapiro Study group had been to have public hearings, and explained that the "Memorandum of Understanding" was a way of managing the Shapiro property. Rollo Kinsman said the selectmen feared putting the property into conservation because the property would then be subject to state regulations, and town control of the property would be lost. It was the general feeling of the assembled townspeople that the public needs more information and discussion with all of the groups involved to decide what to do with the Shapiro property. Following that decision the selectmen withdrew Article 8.

Provocation of much intense discussion were Articles 16 and 17; Article 17 asked "To see if the Town would vote to discontinue all Town Ways in the Town of Heath except those Public Ways or Statutory Private Ways on ..." a list of roads on the warrant". Article 16 asked the town to decide on discontinuance of eight specific Town Ways. Robert Gruen of the Planning Board gave a brief history that began 10 years ago when the board of selectmen asked the Planning Board to look at Town Ways and decide on a course of action. He explained that by using a list of specific criteria, Ed Calver's research and the new 911 road listing, they presented a proposal to the selectmen recommending roads for discontinuance and roads for Statutory Private Ways. Two public hearings were held, and the selectmen elected to not pursue at the time Statutory Private Ways. These roads were placed on the list for Town Ways, leaving eight Town Ways that fit their established criteria for discontinuance. In the pro-

(Continued on page 15)



BRIANS CARPENTRY

Heath, MA 01346

(413)337-4347

MA Lic. #064094 Reg. #118122

COMMERCIAL & RESIDENTIAL CONTRACTOR

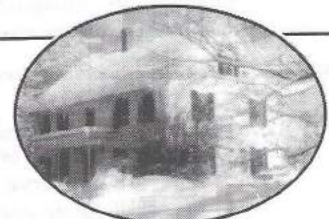
Kitchens / Baths
Additions / Decks

Custom Work Welcome

Free Estimates
Fully Insured

References Available
18 years experience

Maple House



The house on the hill with the view of yesteryear

Within 5 minutes:

- Downhill and Cross-country skiing
- Trout fishing & whitewater play in the Deerfield
- Over 10 miles of wilderness trails
- Swimming and canoeing in private lake

Lodging and breakfast from \$45

Middletown Hill Rd. Rowe, MA (413) 339-0107

(Continued from page 14)

cess the Plannin Board was very careful not to landlock anyone, he said.

Planning Board member Robert Dane spoke of the community good versus the individual good, and that the Planning Board perspective is "the community good". "Lots of things have happened in town during the last 15-20 years that have cost us a lot", said Mr. Gruen. "There is a wish to maintain the rural character and keep the tax base down; this is a way of eliminating some of the stray roads", he said. It was explained that by discontinuing a road the Town is no longer responsible for its maintenance nor its upgrade if an individual wishes to develop it. Highway superintendent Jack Cable spoke of the great cost of upgrading should the town be asked to do so.

A number of citizens expressed concern about individual owners' property rights, and what discontinuance of a road through a property might do to the value of their land, if they did wish to develop it. It was explained by the Planning Board that an individual would still be able to develop his piece of property, but it would be up to the developer to bear the cost of roads, not the town.

The town voted 40 for discontinuance and 21 against discontinuance, of the eight proposed roads. Article 17 was passed after an assurance that should a road have been missed on the Town Way list, there is a process by which to correct it.

A motion was made by Budge Litchfield that the town of Heath "send an expression of appreciation and gratitude to the teachers and staff" at Rowe Elementary School and acknowledge "with deep regret, the loss that will be experienced" by the separation of the two schools. The Town voted unanimously in support of this motion.

A last request, from Tom Lively, was that the warrant be constructed in future years so that the more difficult issues not be left until the end, by which time people may have left.

SELECTMEN'S REPORT

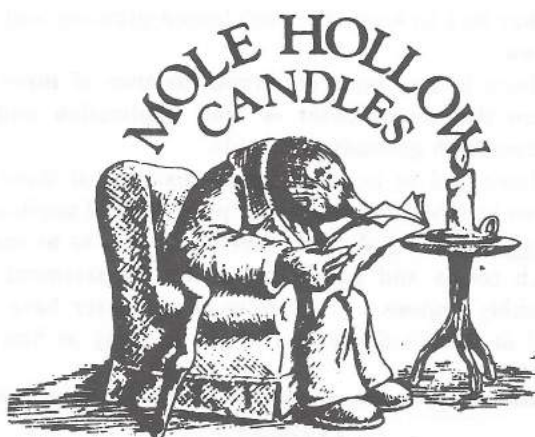
by Hilma Sumner

The past months have been busy ones for the board as we prepared for the annual town meeting on May 11th. Thanks are due to members of the Finance Committee for the many hours spent reviewing the proposed budget for fiscal year 97. The work of the Planning Board in their multi-year study of the roads is also deeply appreciated. The five hour meeting was attended by almost one hundred voters. For a complete summary of the local election and the annual town meeting, see separate article elsewhere in this issue.

During April Eileen Tougas brought a proposal which was approved by the board of selectmen and, in turn, the Park Commission. Mrs. Tougas presented a plan to beautify the town center by building a stone retaining wall and perennial flower garden on the east side of the triangular lawn on the common. Included in this would be some park benches as well as a bench on the Sawyer Hall porch. Flower boxes for the town hall railing have been built, mounted and filled. If the work and materials have been solicited through donations.

Senior member of the board, Dave Howland, vacated his seat after nine years in the position. He contributed greatly through his time and expertise and shall be missed. After a close election, Eileen Tougas was elected to fill the spot for the next three years.

In other business, the board appointed Bob Markert as a policeman. The police department has been instructed to patrol sections of Route 8A and other busy roads where people have complained of drivers using excess speeds. Many complaints have been made of drivers not stopping at the stop signs in the center so the officers will be spending some of their patrol time there as well.



Downtown Shelburne Falls
Overlooking the Falls
and the "Glacial" Potholes
625-6337
"OPEN 7 DAYS"

NORTH RIVER WINERY



Jacksonville, Vt.

Come visit the winery, Take our short tour,
And then taste our locally made wines. (No charge)

Late May - Dec.	January - Late May
Open Seven Days	Open Fri., Sat. & Sun.
10 - 5	11 - 5

802-368-7557

ASSESSORS: PERSONNEL AND COMPUTERS

by Don Dekker

After serving for over a year, Clark Johnson decided not to run for a full term. He was a great help to us, and we thank him for serving the Board of Assessors and the Town. It was a difficult year with a Revaluation, computer conversion, and late tax bills. Even though Joanne and I both told Clark that "normal" years were not like this, Clark had enough. Thank you again Clark!

We were fortunate that at the same time Henry Leuchtman returned from China and agreed to run as a write-in candidate (which he won and is now an assessor). We welcome Henry especially for his skills with computers. Already he has steered Joanne and me into a better understanding of how to work the somewhat cumbersome State CAMA program. (It was cheap, so we bear with it.)

I once said that when computers come, I go. Well, here they are and here I still am. I have learned to use the things, but remain unconvinced of just how great they are. It seems that in some ways they are very helpful - (i.e., in keeping up totals, revaluations, printing bills), but they also cause more work - (all those data entries). I can change a few records with my trusty pencil and eraser before the computer can get ready and into the correct record. Dave Howland called and asked for the total acreage in Town in official categories and untaxed - C61, State, Town, etc. Henry went to the computer. I grabbed the records and started ringing up the acres on the adding machine. I had a total long before Henry, since it took him awhile to get into the correct mode and for the computer to scan each entry. It is said that the brain is faster than the computer; so is Don!

7 AM to 9 PM

Do your Sleeping Bags, Quilts, Comforters,
Bedspreads, Small Area Rugs, Etc., in our
Large Front-Loading Machines.

Village Coin-Op Laundry

55 State Street
Shelburne Falls, MA
Tel. 625-2345

RICHARD C. BISHOP

Attorney at Law

Admitted in Massachusetts & Florida

**SPECIALIZING IN WEST COUNTY
REAL ESTATE**

- Real Estate Closings
- Zoning and Land Use
- Taxation of Real Estate Transactions

LEVY - WINER, P.C. 625-2574
102 Bridge Street, Shelburne Falls, MA

CABLE'S BUS TOUR

by Jack Cable

On May 18 a group consisting of members of the Selectmen, Finance Board, Planning Board, Historical Society, Conservation Commission and Road Task Force took a bus tour around our roads. We covered forty-four miles in four hours and still didn't get to all the roads. I organized this event to bring awareness to people regarding the condition of our highway system. The bus was furnished by Sullivan Bus Company. It was a school bus driven by Jerry Wells of Avery Brook Road and included in the group was the manager of Sullivan Bus. We found a few places where it was difficult to turn around and one road - the Fairground Road - which we had to back all the way out. The bus was far from comfortable and the condition of most of our roads added to the discomfort. I reminded the fifteen passengers that our children ride these buses and traverse these roads every day. The remarks were positive on the reason for the ride and will help us all understand the problems throughout town relative to our highway system. I wish to thank all who participated and a special thanks to Sullivan Bus and its personnel.

DEP DECISION ON SLUDGE APPLICATION

by Raymond C. Pettengill

The Heath Board of Health received a letter from the Department of Environmental Protection (DEP) dated May 14, 1996. The letter informed the Board of Health that on April 18, 1996 an investigation was made at the Morse Site and it was noted that the site was unsuitable for the land application of sludge and they would deny the permit.

DEP stated the following conditions made the site unsuitable:

The land was saturated with water.

They had to know the anticipated planting and harvest time.

There had to be a minimum distance of three feet between the lowest point of land application and the maximum high groundwater table.

There had to be a minimum distance of three feet between bedrock and the lowest point of land application.

Each Land Application Certificate has to be subject to such terms and conditions as the Department may reasonably impose.

Copies of the letter have been posted at Peter's Store and in the hallway at Sawyer's Hall.

Transitions
— come change with us —
A FULL SERVICE SALON
625-6855
39 BRIDGE ST. • SHELburne FALLS, MA • 01370

HIGHWAY DEPARTMENT REPORT

by Jack Cable, Superintendent

I would like to thank the Selectmen, Finance Committee and Heath residents for approving our Highway Budget. The Highway Department works hard to maintain our road system and I believe that the positive vote by the residents shows that the crew's work is noticed. Our primary item in the budget was the loader. We are looking at all the different machines available and the crew is making decisions on what is best for the town. What works in another town doesn't necessarily work here as "bigger isn't better" when it comes to the majority of work we encounter on our narrow roads. Bids will be going out soon on the loader.

We haven't seen the box culverts on Avery Brook yet! I have lost patience with the delays on this project. The Avery Brook TIP project is "on schedule" under the able hand of Bill Silvernale of District I where the project is "Priority I". The Road Task Force is moving along in their inventorying and assessing all our road system which is part of the Planning Board's long range layout for Heath. I am working with Linda Dunlevy of County Commissioner's Office and Bill Silvernale of District I on computer systems of our road layouts.

Road maintenance has been off to a slow start because of the wet and cold weather - it snowed here on May 30! Excessive moisture has prevented us from properly grading our gravel roads; the cold weather prevented us from hot patching the potholes (although cold patching was done) because if we got the hot mix in Greenfield - by the time we got it to town it would be too cold to work and much of it would have to be wasted.

The transfer station is running excellent and the metals bin is back. Remember NO propane or any other pressurized containers and no refrigerators or air conditioners that contain freon. Keep recycling - we are proud of our 40%.

We welcome the new officials elected and appointed and pray that we will work together to maintain the beautiful rural area we live in. Also I was proud to be a part of the Annual Town Meeting. The issues were debated and everyone conducted themselves in a calm, professional manner and we all left the meeting with respect for each other.

In the elections this fall - remember the politicians who have helped the town of Heath - they deserve our support.



**The Baker
Pharmacy**

Tel: 625-6324
Week Days 8:30AM - 8PM
Saturdays 8:30AM - 5PM
Sundays & Holidays 9AM - 12 Noon

52 Bridge Street

Shelburne Falls

PERCS, PERMITS AND TRANSFERS

Percolation Tests

Dawn Peters reports that there have been three applications for perc tests as of 5/31/96; two repairs and one new. Of these, one has been rejected and two are pending.

Building Permits

No building permits were issued this period.

Deed Transfers

Eleanor Dun Wolf to Carolyn M. Holstein of Amherst. Branch Hill Road, lot A. \$1.

Alastair G. Maitland to Alastair G. Maitland Trust. Jacksonville Stage Road, 3 parcels. No consideration.

Town of Heath to Kevin and Karen Mozalak. Navaho Lane, lots 5 and 6. \$1,000.

Raymond G. and Karen Boutin to Jeffrey J. and Janice M. Dalv of West Springfield. 6 Apache Drive. \$40,000.

James E. and Irene Wharem to Barbara Haskins of Turners Falls. 36 Colrain Brook Road. \$4,000.

Marian W. Spritzer, Heritage Bank for Savings by General Financial Services, Inc., to General Financial Services, Inc., of Kansas. 8 Burrington Road, \$12,000.

Astrid I. Kain of Greenfield to Bruce M. Kain. Jacksonville Road, Route 8A. \$26,000.

William J. Wolf Estate, Edwin M. Wolf of Keene, NH, trustee, to Carolyn M. Holstein of Amherst. Branch Hill Road, lot A. \$1.

George A. and Cynthia L. Humphrey to William J. and Susan L. Handzel of Springfield. West Brook Drive. \$2,500.

Daniel T. and Kathleen L. Whiteman to Mikie Perez of Holyoke. Colrain Brook Road, lots 23 and 24. \$83,000.

Bob DeLisle Electrician

Prompt, Courteous, Reasonable

Lic. #E34969

337-5716



**BALD
MOUNTAIN
POTTERY**

STONEWARE & PORCELAIN

Sarah Hettlinger
South Rd. Heath, MA 01346 (413) 337-4496
28 State St. (Near the Bridge of Flowers)
Shelburne Falls, MA (413) 625-8110

PEOPLE IN THE NEWS

Paul Ferretti, a 7th grader at Mohawk, was inadvertently left off the 7th grade list for honor roll for the second quarter in the April/May 1996 issue of the Heath Herald. He received High Honors 1st quarter, Honors 2nd quarter, High Honors 3rd quarter and a certificate of outstanding effort in Science 3rd quarter along with four certificates of proficiency - one in English - one in Social Studies - one in Science - one in Mathematics all in the 3rd quarter.

Chauncey H. Cable, father of Jack Cable, received his fifty year pins and awards in Masonry at ceremonies at Universal Lodge in Orleans, Massachusetts on April 11. Mr. Cable joined the Masonic Order in Torrington, Connecticut and Massachusetts. Dignitaries from throughout Massachusetts attended. Jack also attended the event.




CARLISLE WALLCOVERING
PAPERHANGING & INTERIOR PAINTING

MICHAEL CARLISLE 413-625-9733




SUBSCRIBE TODAY!

THE HEATH HERALD

For only \$5.50 a year, 6 issues of the **HEATH HERALD** will be delivered to your home.

Name _____

Address _____

- Keep abreast of local happenings.
- Give it as a gift to friends or family members.
- Support your local paper.

The Heath Herald, P.O. Box 54, Heath, MA 01346

HEATH HERALD

Box 54

Heath, MA 01346-0054

FORWARDING & ADDRESS
CORRECTION REQUESTED

Bulk Rate
U.S. POSTAGE
PAID
Permit No. 11
Charlemont, MA 01339

Heath Brook Studios

Glass and Baskets

"Bob and Jayne Dane"

By Appointment Year-Round In Heath Center

337-5736

 **Frederick M. Burrington** Artist
Drybrush Watercolor
Pen and Ink Drawing
Commissions Taken

Rt. 8A, Charlemont, Ma. 01339 (413) 337-4426

Heath

77 Sadoga Rd.

Mass. 01340



Russlin Saw

Husqvarna Power Equipment
Sugaring Supplies
SERVICE - ALL MAKES

Phone 337-8704

Fax 337-4306

HEATH LADIES AID

by Edith C. Royer

The Ladies Aid will have their summer sale at the Heath Fairgrounds with the Church Craft Fair, on Saturday July 27, at 10 AM.

We have the usual assortment of fancy articles, toys, baby quilts and other things. Come and look around and visit with friends.

PETERS GENERAL STORE

No. Nine Road, Heath, MA • 337-5501

LOCAL MAPLE SYRUP FOR SALE

Video Tapes and VCR Rentals

Movie Rentals - 2 for the price of 1 on Tuesdays & Wednesdays

- | | | | |
|-----------|------------|----------------|----------------|
| • Wine | • Chips | • Ice Cream | • Cough Syrups |
| • Liquor | • Pretzels | • Frozen Foods | • Aspirin |
| • Soda | • Popcorn | • Breads | • Bandages |
| • Cheeses | • Crackers | • Meats | • and more |

Deli Case • General Groceries
Snacks • Sunday Papers

Video Tapes & VCR Rentals • Gasoline • Diesel • Kerosene
Worms and Crawlers • Blue Seal Feeds
Nuts, Bolts, Nails, General Hardware • Brookville Gloves

HOURS: Monday - Saturday 8 am - 7 pm
Sunday - 10 am - 7 pm

Providing Service to the Hilltowns since 1913