

# HEATH HERALD

Heath's First Newspaper

75¢

Volume 23, Number 2

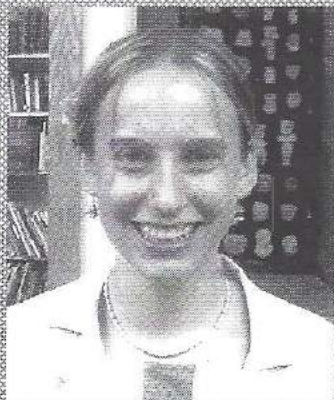
June/July 2001

## Congratulations Heath Graduates

### Mohawk Trail Regional



Front row left to right: David Smead, Brendan Latrell, Amy Armstrong, John Phil Shattuck, Rachel Brower. Middle row: Deidre Gleason, Sara Burke, Jillian Lively, Aaron Wodin-Schwarz, Kathleen Lucid, Jessica Gonzales. Back row: Daniel Levitch, Andrew Kuehl, Joseph Almeida, Paul Ferranti, Robert Law, Bradlee Nartowicz, Tim Allen. (Missing from photo is Jessie Bruzee).



Maya Rachael Locke  
Academy at Charlemont



Greg Cutter  
Franklin County Tech

class of  
2001

#### In this issue

Heath School Budget	4
Sentinel Tree	7
Mohawk Has a Greenhouse	7
Dealing With Loss	11
Library Lines	13
The Way It Is In The Country	16





*From the Editor ~*

## Hilltown Rambles

Spring has finally sprung here in Heath. After one of the frostiest winters in recent memory, it seems like Mother Nature is playing tricks on us by reversing the months of the season. April was dry and arid and "showerless," while, at this writing, we're ending May and starting June with the "gift" of rain and cold! In April we brought out the shorts and tee shirts, while in May we turned on our heat! I'm sure I am not alone in my wish for more seasonable weather and warmth.

June has traditionally been our "Graduation Issue." I think it's important to note that as spring takes over our consciousness with its new growth and new beginnings, our graduates also step into their new lives and opportunities. Lithe, strong, fledglings taking off into the world - whether they are 6th grade, 8th grade, or seniors, the Heath Herald congratulates them all!

Review the Heath School Budget as David Howland takes you into the wisdom of the committee's process. Laurie Wheeler Burrington also deals with some budget issues in her column, *Library Lines*, and sadly, this is her last column as the librarian of Heath's fine Public Library. The Herald staff will miss her contribution and smiling face. *Nurse Notes* by Joanne Fortune deals with grief, a feeling that all of us face at some point in our lives. Lately, it's been four good men that have passed and they have been Heath's loss remembered in Edith Royer's *Milestones*. Blueberries, blueberries, blueberries! They put Heath on the map, my map anyway! Jack Cable has given us a couple of recipes to be included in *Hilltown Tastes* as "Jack's Favorites." First-time contributor and new advertiser Dave Gott, of the Benson Place blueberry farm, has a charming story about the sentinel tree that lives on his property.

Remember the Heath Herald deadline for the next issue is July 10, 2001!

## Heath Herald

*Managing Editor*  
*Design and Layout*  
*Copy Editor*  
*Typographer*  
*Business Manager*  
*Advertising & Circulation*  
*Coordinator*  
*Columnists*  
*Contributors:*

Lea Banks Bohrer  
Eileen A. Tougas  
Jane de Leeuw  
Diane Cote  
Deborah Phillips  
Deborah Phillips  
Dianne Cerone  
Jack Cable, Carroll Stowe  
Dianne Cerone, David Gott

### *Reporters:*

Laurie Wheeler Burrington, Jack Cable, Jane de Leeuw, Joanne Fortune, R.N., Heath Historical Commission, David Howland, Val Kaempfer, Timothy Lively, EMT, Alan Nichols, Edith Royer, Todd Sumner

The Heath Herald is a nonprofit newspaper staffed by volunteers and published six times a year. Donations are tax deductible and are greatly appreciated.

**THE HERALD DEADLINE FOR THE AUG/SEPT ISSUE IS JULY 10, 2001.** Photographs, drawings, and articles are the property of the Heath Herald unless accompanied by a self-addressed, stamped envelope. Call (413) 337-0217 or E-mail Lea at [saleda@crocker.com](mailto:saleda@crocker.com).

**SUBSCRIPTION RATE ~** One Year: \$6.25 (payable in advance by check or money order).

**ADVERTISING RATES ~** Display ads: \$5.80 per column inch. Contact Deborah Phillips at (413) 337-8513.

**CLASSIFIED ADS ~** Free

Send all correspondence to:

Heath Herald

P.O. Box 54, Heath, MA 01346-0054

### SUBSCRIBE TODAY! HEATH HERALD

For only \$6.25 a year, 6 issues of the Heath Herald will be delivered to your home.

Name \_\_\_\_\_

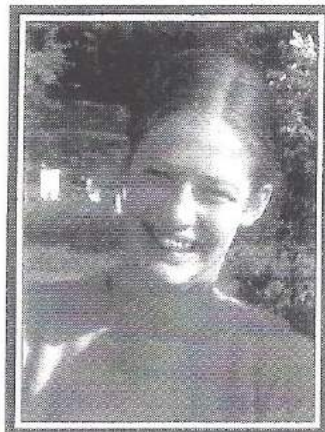
Address \_\_\_\_\_

- Keep abreast of local happenings
- Give it as a gift to friends or family
- Support your local paper

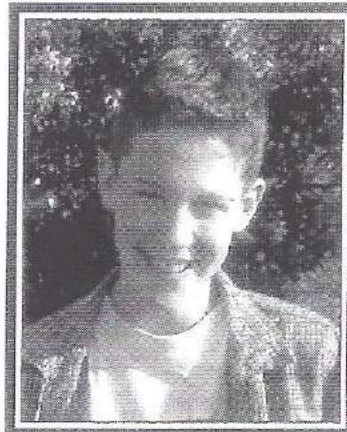
The Heath Herald, P.O. Box 54, Heath, MA 01346



## Academy at Charlemont's Eighth Graders from Heath

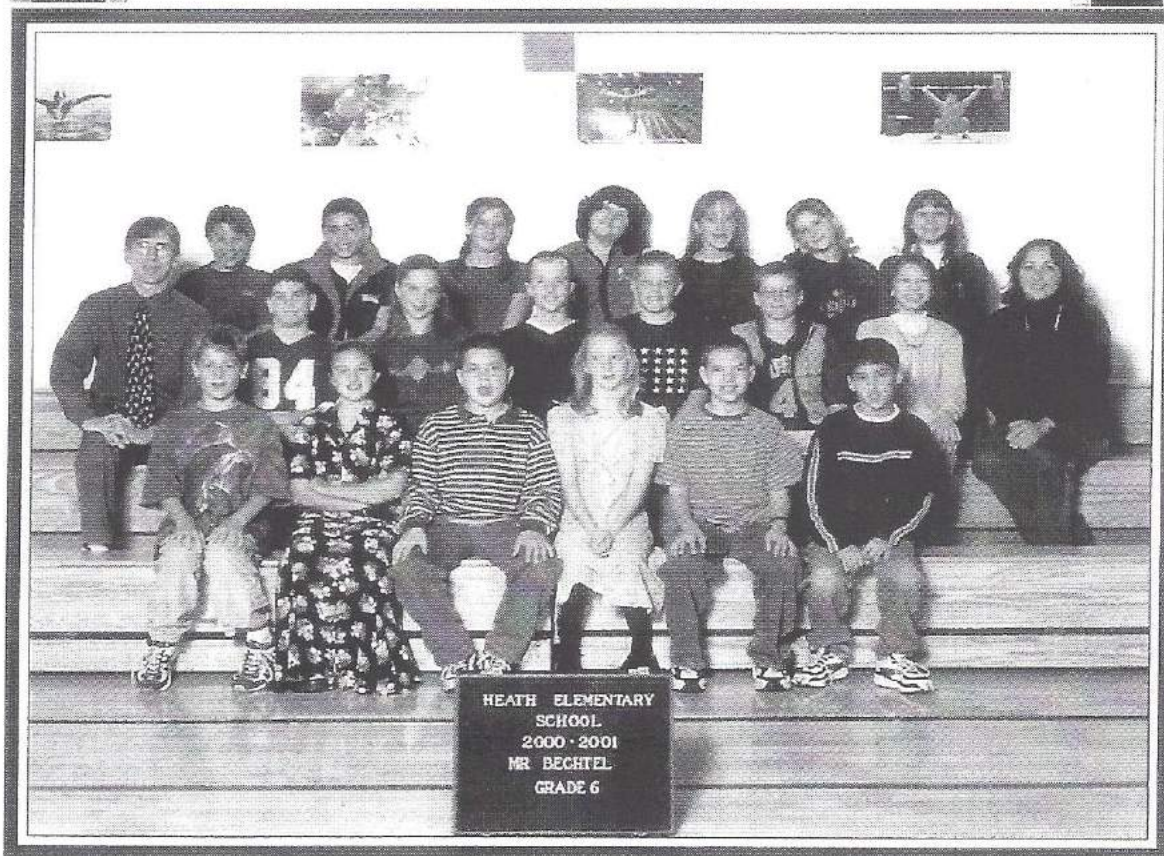


Sarah Banks Hartshorne



Kurt Wilkins

## Heath 6th Grade



**Back row:** Riston Donelson, Mariano Gonzalez, Alexandra Thane, Christine Sessions, Brianna McReynolds, Ashley Erho, Kayla Six

**Middle row:** Stephen Bechtel (teacher), Jeffrey Vilbon, Grace Phillips, Joseph O'Dea, Michael Kuehl, Andrew Lively, Alice Gear, Alice Lemelin (instructional assistant)

**Front row:** Jacob Smead, Kirsten Singley, Jason Plante, Samantha Newell, James Muenkel, Joseph Lemelin (Missing from photo: Breighannon Mitzkovitz)



---

## HEATH SCHOOL BUDGET: A WORK IN CONSTANT PROGRESS

---

Heath's School Budget for FY02 will be considered along with the rest of Article 3 at the continued Annual Town Meeting on Saturday, June 23, at 9a.m. in the Community Hall. Because of its impact on the Town's budget it seems appropriate to review why we are where we are and how we got there. I have been a representative to the Mohawk Municipal Advisory Committee (MMAC) for many years including time when I was serving on the Finance Committee and as a Selectman. It has been an interesting and challenging experience, but it also has been frustrating because of constant budget crises that remain unresolved. MMAC is strictly advisory but does exercise an oversight role in the budgetary process of the Mohawk Trail Regional School District (MTRSD) This year Ned Wolf, a member of Heath's Financial Committee, has been co-representative with me.

### HEATH'S FY02 SCHOOL BUDGET

A comparison of the FY01 and FY02 school budget assessments will give you some idea of what we are facing in the coming year:

Budget Component	FY01	FY02
MTRSD Operating Budget	\$483,259	\$558,865
High School Capital Budget	36,582	33,141
Heath School Capital Budget	86,000*	86,000*
Franklin Tech School	32,887	63,707
School Committee	732	732
Totals	\$639,460	\$742,445**

\*This is Heath's net assessment. The total debt picture will be explained later.

\*\*This is an increase of \$102,985 (16.1%) or about \$2.20 in the tax rate!

### WHY THE INCREASE?

The primary reason for the increase in FY02 is due to Heath not receiving credit in the Education Reform Formula for its Excess Debt thereby adversely affecting the Mohawk and Franklin Tech School assessments. Excess Debt represents the difference between the local, per pupil cost of construction of a new school versus the State's average per pupil. In FY01 Heath received Excess Debt credit of \$113,744. This number is subtracted from the Minimum Contribution to arrive at the Net Minimum Contribution, the amount of required contribution by a town. This latter number is basic to the calculation of local assessments. While Heath received Excess Debt credit last year, it also experienced a major increase in assessment from the previous year for other reasons; hence we applied for and received Pothole money help from the Department of Education (DOE). The problem with the Pothole process is that it requires an application and politicking via local representatives, all of which takes time. It makes managing the town difficult because you never know if and/or when you might get the money.

In FY02 the DOE applied a higher Wage Factor in the formula to towns in the MTRSD and updated some other components. As a result Heath received credit for only \$2,045 in Excess Debt, while all the other towns received full credit. The bottom line is that three of the largest towns in the District have lower assessments for FY02 primarily at the expense

("Heath School Budget" continued on page 5)



---

(Heath School Budget continued from page 4)

of Heath and Charlemont. Excess Debt is one of the major causes of unpredictability in school assessments because it is difficult to apply it uniformly. Not all towns have new construction and, if they do, it is for differing amounts whereas cities with one school district do not have a conflict. Further, administration of the formula focuses on a district-wide approach. It does not recognize the impact of the formula on multi-town districts to the degree it should. Finally, Excess Debt is an adjustment for capital expenditures but is applied to operating budgets thereby creating an apples and oranges situation. All other capital costs in the MTRSD are kept separate. While the Education Reform Act of 1993 has been generally successful in bringing equity and adequacy to public education with over \$1.3 billion having been spent, in my opinion, it has serious shortcomings for small towns in Western Massachusetts.

There is one other feature of Educational Reform that has had a major impact on our taxes as well as those of all other communities. It is called the Foundation Budget and it sets forth a goal of spending to meet a standard of adequacy. While the state has funded its share of the goal, towns and cities have also had to increase their spending. By the year 2000 most communities had achieved Foundation Budget. The distribution of funding in the Mohawk District is about 60% state and 40% local.

### HEATH IS UNIQUE

Heath was forced to build a school. Heath's growth in population in the late 1980s brought with it a substantial increase in the number of students. Space was not available elsewhere and efforts to combine resources with other towns to enlarge facilities did not materialize.

Heath has a very high local share of debt. The capital expenditures for Heath's school, as shown at the beginning of this article, have been \$86,000 for the last couple of years. Our actual obligation for the mortgage with the Farmer's Home Loan Corporation is \$310,044 for FY02. We receive \$197,018 every year from the State (SBAB money) resulting in a net cost to the Town of \$113,026. According to Consultant Ed Moscovitch, who did a study of our school situation last year, Heath has the highest local debt tax burden in the state based on per thousand dollars of adjusted valuation. With some creative financing Heath has been able to reduce the annual costs to the \$86,000 level. In a few years Heath's annual cost is expected to fall below that amount.

Heath has low property wealth. Again, the Consultant determined that Heath's per student property wealth was well below the state average. This may change somewhat for FY02 because recent census figures indicate that our per capita income has risen and we expect the Town's property valuation to rise. Heath, however, is still a small town with about one half of one percent commercial tax base and no industrial tax base whatsoever.

Heath's student population is nearly 30% above the average. The fundamental problem with Heath's school budget is that we have 175 students for our population of 805. This is 28.6% higher than the average student versus population of the other towns in the District and in the State. On a cost per student basis this additional number of students for Heath represents an additional assessment of about \$170,000 in the Mohawk and Franklin Tech school budgets or about \$3.50 on the tax rate.

Heath's Elementary School has 39 "Choice" students. When the Heath school opened in 1996 it had about 120 Heath pupils, but since then its enrollment of Heath students has declined to 87. A few years ago the district voted to accept students from towns outside the district and so Heath, with room for additional kids, accepted them. We now have 17 "Choice" enrollees from towns outside the district and 22 pupils from other towns within the district for a total of 39. Heath's total enrollment for FY01 was 126. This growth in our school population has raised questions about how it is funded and is Heath paying for these non-Heath children. Briefly stated, Heath's school assessment is based only on the number of Heath students; the state transfers money to the district for children from outside the district, and the towns within the district pay for their kids even though they are at Heath. Heath's school budget is increased by about 30% because of the other students but then all the budgets in the district are lumped together and each town pays a percentage based on the five year average of each town's own students. Thus, "Choice" is essentially a non-issue. However, the size of Heath's budget because of "Choice" has created misunderstandings within the district, which suggests more education and training about the process is needed. Obviously, parents are supportive of the arrangement albeit it might be more efficient if all the "Choice" kids were absorbed by their own schools, but once "Choice" children are accepted in school of "Choice" is committed to them.

---

("Heath School Budget" continued on page 6)



Heath has other fiscal difficulties. Heath has a landfill that is owned jointly with Charlemont and Hawley. The Department of Environmental Protection is putting pressure on us to cap it permanently in accordance with its standards. Costs are estimated to be between \$800,000 and \$1,000,000 for the three towns. The Selectmen may be able to apply for grant funds to help resolve this problem. Also, last July nine inches of rain fell on Heath over a period of two days thereby causing serious damage to our roads. The Town has had to borrow substantial funds to pay for the repairs. There is hope for "emergency" aid help from the State in FY02. Heath does not have the resources for these huge expenditures.

#### STEPS THAT MIGHT BE TAKEN FOR RELIEF

A rural initiative could help Heath and other towns. Consultant Ed Moscovitch suggested a legislative change in the Foundation Budget to resolve the problems associated with rural districts that discourage/prevent the economy of scale in operations when compared with cities like Greenfield or Springfield. The Foundation Budget, which is the cost standard set by the DOE that towns must meet, does not recognize the differences between rural districts and larger, one-district communities. This has a profound effect on the total MTRSD budget because the Net Minimum Contribution plus Chapter 70 Aid do not meet local spending demands; hence all MTRSD towns contribute nearly 30% above required spending for a budget. This is an inordinately high amount; the State average is more in the range of 5% to 10%. We need the facts about this problem.

Heath has suggested the MTRSD change the method of assessment. This year's problem with Excess Debt caused considerable discussion. While the overall District budget increased 2.5%, the assessments were not equitably distributed. Heath has since formally asked the School Committee and Administration to consider a method based on the Minimum Contribution as computed by the DOE, which eliminates Excess Debt from the calculation. We believe it is legal, it would be based on the operating budget only and should lead to more predictability in assessments. It would have lowered Heath's assessment to a reasonable amount for FY02. We hope the Administration, School Committee, and MMAC will take it under advisement this summer.

Special legislation to eliminate Heath's unique situation might be proposed. Some of us have thought about asking the Legislature to consider a measure that addresses our population and Foundation Budget problems; however, discussions of this subject with politicians have met with lukewarm responses. To date, the DOE and the Legislature look to Pothole money to take care of anomalies in the Ed Reform formula. We appreciate all the Pothole support we have received since 1996, but we cannot depend on it. It doesn't solve long term problems.

Whatever happened to Proposition 2 ½? Proposition 2 ½ was supposed to limit increases in local budgets to 2.5% on state mandated matters. Heath could vote on the school budget and, if it got turned down, pay last year's assessment plus 2.5%. However, it seems that legally the MTRSD could then force the Town to pay the total assessment. This would not be pleasant nor would it engender good relations within the District. Also, we have been supported by Pothole money, which has had a softening effect on the issue. So it does not seem to be a viable alternative at this time. Again, in a city with one district this action could result in a lower school budget. There seems to be some inequity here for multi-town districts.

#### WHAT TO DO ABOUT HEATH'S FY02 BUDGET ON JUNE 23RD

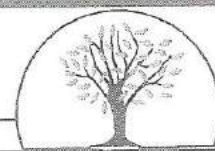
On June 23, voters will be asked to take action on the FY02 budget, especially the Mohawk assessment. Last year the school budget was level funded, and we had to wait until recently before we received Pothole money to set the tax rate. As difficult as it is to live with that arrangement, it seems to have been in the best interest of the taxpayers. If the budget is voted as is, the tax rate may be so high that other important budget items may have to be cut in deference to the school budget, a situation the BOS and Finance Committee will be working on between now and the Town Meeting. If anyone has further questions about the foregoing, please feel free to call me at 337-4980. Also, this problem with Mohawk assessments is a matter, I think, that we all need to think about and address. May I suggest you talk with Selectmen, Finance Committee and School Committee members in this regard. See you at the Town Meeting.

~ David F. Howland



---

## Sentinel Tree



By Dave Gott

The ash tree stands alone near the corner of our property and that of our neighbors. It's in the middle of the blueberry barrens that we farm here at the Benson Place on the south end of Burnt Hill. We can see the tree from many places on the farm, and the striking lean of its posture is familiar to residents and travelers on Burrington and South Roads. Ravens, kestrels, and other birds use it for a resting place. Recently, just at dusk, we watched a great horned owl peering for prey from the upper branches, silhouetted against the distant hills and the fading skylight.

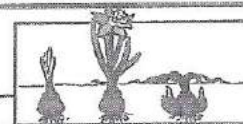
How old the tree is I have no idea, nor how long it will stand. It last had leaves in 1999, the year we moved in. The price it pays for being such a center of attention is trial by fire. Each year as soon as the snow is off the fields we burn a third of the fields to prune old berry bushes to the ground and to invigorate them for improved yield. Sparks have occasionally jumped into trees like this one, and they did again this year. There was no danger to the surrounding acres, which had already been burnt. But, as darkness gathered in this still snowbound location, neither did it make sense to extinguish the orb of orange light that glowed eight feet off the ground.

I slept out near the tree that night, joining it in vigil on the exposed western slope. Lying on the ground looking up at the solitary form, I thought about how much of my farm work I do alone. And how farming today means taking a stand for a unique set of values. At the same time I remembered that we, the tree and I, are part of a web of life and death much greater than ourselves. The fire went out on its own. And the sentinel tree held its ground to greet yet another spring.

Speaking of that web, special thanks to the Heath Fire Department, last spring and this, for training, skill, and support. Also to our neighbors for shared work, humor, and friendship. As well to our hard working, picking and sorting crews plus their families over the past two seasons. And to our customers, suppliers, and service people from Heath and beyond. It takes a village to grow blueberries...and to honor the trees and land that we love.

---

## Mohawk Has a Greenhouse



By Dianne Cerone

How many of us knew that Mohawk Trail Regional High School has a greenhouse that has been buzzing with activity? About five years ago, through the efforts of the science department, a greenhouse was purchased from a local farm in Buckland. At that time, the greenhouse was seen as providing an opportunity for students to experience a taste of the agricultural field during their high school years, even perhaps an enticement to some to make a career in the field. The Contemporary Problems class had for many years sponsored a garden to help benefit the local food pantry. With the acquisition of the greenhouse, the possibility of starting some plants from seed prior to planting time encouraged the class to raise money and to organize an effort to erect the greenhouse. Then two years ago, Ms. Betty Stewart, an instructional assistant, took over the general operation of the greenhouse through the Community Service Learning (CSL) grant.

During a recent tour through the greenhouse, we found the tables and ground covered with vegetables, herbs, and flowers in flats slated both for the garden and for individuals who had requested them. Ms. Stewart has approximately seven students who work in the greenhouse regularly with her. The students from the Contemporary Problems class also remain involved with the garden project for the food pantry with her help, and some were busy rototilling the garden that day. In addition, there are a few students from the Special Needs Program who helped to plant seeds.

All produce from this garden is donated to the Western Massachusetts Food Bank, which in turn distributes it to the Hill Town Food Pantry in Ashfield, carrying on a tradition that was started many years ago.

One-and-a-half-inch cucumbers were seen on "patio" type plants in some pots while radishes ripe for the picking were in others. Ms. Stewart mentioned that the greenhouse workers had already enjoyed some lettuce and greens. Flowers and herbs were potted as well with flowers already appearing on familiar plants; impatiens, flowering maple, lobelia, chives, variegated vinca, and nasturtiums.

At the rear of the greenhouse, a hydroponics area has been set up made from tubes donated by the janitors, and the cafeteria supplies raw vegetable trash to help enrich the compost bin. The greenhouse also is equipped with a heating and ventilation system that makes it possible for activities to continue in the winter months.

We noticed that in several pots corn stalks over two feet high were growing through the efforts, we were told, of one senior student doing an independent study project. This student, who had neither a knowledge of plants nor any interest in continuing education after high school, made an unscheduled visit to the greenhouse one day, and got "sucked in."

("Mohawk Has a Greenhouse" continued on page 16)





Open 7 Days — 10 am to 5 pm  
 FREE TOURS LATE MAY - DECEMBER  
 Located on Route 112, Jacksonville, Vermont  
 30 Minutes North of Shelburne Falls, MA  
 802-368-7557

Dave Farrington  
 Jacksonville, VT  
 802-368-7456

38 Years of Experience

### J.W. AUTO

Auto and Light Truck Repair  
 Elvis Presley Blvd., Rt. 100 S., 1/2 mile from center

ASE Certified Master Mechanic  
 Air Conditioning, Service Engine Lights, Auto Transmission

### Nancy L. Dole BOOKS & EPHEMERA

Shop: 32 Bridge Street, 2nd floor  
 "in the heart of Shelburne Falls"

BUYING AND SELLING GOOD USED BOOKS

### Bald Mountain Pottery

Stoneware & Porcelain  
 Sarah Hettlinger

28 State St. (Near the Bridge of Flowers)  
 Shelburne Falls, MA 01370 (413) 625-8110

A COLLEGE PREPARATORY DAY SCHOOL AT AN  
 AFFORDABLE TUITION FOR GRADES 7-12 AND POSTGRADUATE

### THE ACADEMY AT CHARLEMONT

MOHAWK TRAIL, CHARLEMONT, MA 01339 • 413-339-4912  
 fax 413-339-4324 • E-Mail academy@charlemont.org

### View from Burnt Hill

### Burnt Hill Happenings

By Jack Cable

A footnote on Lieutenant Governor Swift's visit to our home on February 16 - among all the press that was represented, Newsweek, too, was here and photographed her sitting in our house. They used that photo in an article about the then Lieutenant Governor in the February 26 issue of their magazine. We are certainly proud that Jane is now the Governor and congratulate her and husband Chuck on the birth of their twin daughters. Jane is quite a lady and certainly well able to handle being the Governor, wife, and mother.

Beverly and I attended the National Convention 2001 of United Fruit and Vegetable Growers in Tampa, FL on March 18 and 19. The convention focused on all of the operations that go into a crop from "seed to table." There were cultured practices, packaging, quality control, and transportation exhibits, workshops on food safety and technology plus escorted tours to markets, farms, and packing houses. We toured the University of Florida Experimental Station for strawberries and also a strawberry grower/packer in Plant City. Beverly won second prize at the University of Idaho exhibit by guessing the correct weight of a potato. Her prize was a University of Idaho cap and her name and "Heath, MA" were prominently displayed. (Call her Ms. Potato Head).

On the way to the conference, we stopped at a fern farm. The area south of Palatka (NE FL) in the Lake George-Crescent Lake area is the world's largest supplier of ferns for florists and other horticultural needs. It is a federal offense to be caught picking ferns on someone else's property! The ferns, in large numbers, are shade grown under netting similar to shade tobacco - only the netting is black. There are thousands of acres of this crop in this area; it is the only natural growing area in the world!

I represent Heath on the Yankee-Rowe Community Advisory Board and attend all their meetings and workshops. The last meeting was at the site to observe the fuel storage cast construction. I am keeping close watch on this activity.

### Heath Historical Society Notes

The Society received locally used items: from Bud Kaempher, a corn cutter, and from Dot Sessions, a horse drawn mower sharpener. The acquisition of the Sumner wagon was discussed. We also received the Heath Seal from Heath, England, and two American flags - one a "48 star" flag and the other, a cloth and hand-sewn one. Does anyone know anything about these flags?

I have offered the original outhouse from the Center School back to the Society. It has served Burnt Hill well for thirty-five years! It is still in original condition - clapboards with square nails, post and beam construction, and initials carved in the walls. We will have it restored to its original luster and return it to its original site.

~ Jack Cable, President



## Heath Historical Commission FY01 Annual Report

The Heath Historical Commission has been reactivated this year with the addition of three new members, Dino Schnelle, Jane deLeeuw, and Del Viarengo, Chairperson. Under Del's leadership the Commission has embarked upon an ambitious mission, "to identify, preserve, and protect the historic resources of our community," the first step of which is to achieve historic landmark designation, both local and national, for our historic Heath Center. To this end, the Chairperson has been working hard, gathering needed materials, putting the files in order, and, in general, staying in touch with the State Commission in order to satisfy state requirements. Currently, individual members are engaged in researching the history of the Center's buildings.

In November, the Commission hosted an informative and well-attended meeting with State Historical Commission officials to which representatives from the commissions and historical societies of surrounding towns, the Heath Selectboard, and Planning Board were invited.

*~Heath Historical Commission*

### Milestones

**Robert Delisle**, 75, of Vassalboro, ME, died March 29, 2001 at Maine General Medical Center of end stage renal disease. He was born in August of 1925 in Athol, to Damien and Genevieve (Seney) Delisle. He attended schools in Athol and Leominster.

He served with the 23<sup>rd</sup> USN Seabees during World War II. He worked many years as a restaurant manager in Massachusetts, and later in Connecticut as a mold polisher. Upon retirement, he moved to Maine with his wife of 48 years, the former Priscilla Jones. He enjoyed cooking, antiques, fishing, and gardening.

Besides his wife, he leaves his sons, Robert B. of Heath, Darryl G. of Hubbardston, Christopher J. of Randolph, ME, and Andrew C. of Oakland, ME; his daughters, Cynthia L. Kustra of Petersham and Rebecca J. DeLisle of Augusta, ME; his sisters, Gladys Sweeney of Oceanside, CA, Lucille Curtwright of Kanab, UT, Doris Valois of Leominster, MA, Estelle Goselin of Norwich, CT, and Loretta Ettore of Schenectady, NY; eight grandchildren and many nieces and nephews.

**Gilbert C. Smith**, 84, of Route 8A, died April 25, 2001 at the Temple House in Shelburne Falls. He was born on August 28, 1916, in Heath, to K. Paul and Edith (Gilbert) Smith. He attended grammar school in Heath and the former Charlemont High School.

Prior to retirement in September 1978, he was employed by the former Kendall Co. in Griswoldville for 27 years. Previously, he was a self-employed farmer and had also worked on the Herron Farm in Leyden. He was a member of St. Joseph's Catholic parish in Shelburne Falls.

His wife, the former M. Alice Bolduc, died May 3, 1999. Survivors include five sons, Peter G. of Colrain, Arthur K. of Belchertown, Timothy J. of Tucson, AZ, Gerald L. of Greenfield, and Omar F. of Monroe Bridge; two daughters, Claire L. Rabbitt of Heath and Jacqueline M. Tiffany of Forest Hill, CA; five brothers, Louis of Heath, Frederick of Greenfield, Floyd of Grafton, NY, Daniel of Chesterville, ME, and Donald of Seebing, FL; two sisters, Vivian Hazlett of Guilford, ME, and Lucy Burnett of Sun City, AZ; nine grandchildren, nine great-grandchildren, and several nieces and nephews.

**William David Stamm**, 69, of Sarasota, FL, stepfather of Lea Bohrer, of Heath, died April 26, 2001 at home following a lengthy battle against leukemia. He was born May 24, 1931, in Indiana to David and Cornelia (Parker) Stamm and came to Florida from Madison, OH. He was a Navy veteran of the Korean War. Mr. Stamm was a retired custodian for Cleveland Electric Illuminating Co. in Ashtabula, OH, and worked at the Ringling Museum in Sarasota for many years.

Bill Stamm was an artist. He enjoyed antiques, flea markets, art history, art, painting, and jazz music.

Besides his stepdaughter, he leaves his wife of 25 years, Karen (Durant) Stamm; two daughters, Susan J. Vertich of Bradenton, FL and Sherry L. of Ashtabula, OH; two stepsons, David of Dallas, TX and Keith Marius of San Francisco, CA; a sister, Elizabeth Sarbach of St. Petersburg, FL; a brother, Charles Sarbach of Orwell, OH; and four grandchildren.

**Harry Hall**, 76, of Heath, died May 1, 2001, at Franklin Medical Center. He was born February 10, 1925, in Cleveland, OH to Virgil and Vera (Carroll) Hall. He was educated in Lisbon, OH schools.

Mr. Hall was a World War II Navy veteran. He enlisted on June 14, 1943, and was honorably discharged on December 20, 1945. While in the service he served in the Pacific Theater on the USS Saipan carrier as a gunner. He was employed by EASCO Tool Co. in Springfield prior to his retirement in 1987. At the time of his death, he was employed part-time by the Anchorage Nursing Home in Shelburne.

He was a member and usher at Heath Union Church. He enjoyed camping and motorcycling. He and his wife, the former Delores M. Maggio, were married April 12, 1969. They moved from Springfield to Heath in 1989.

Besides his wife, he leaves four sons, Danny of Chicopee, Timothy of Westfield, James Courtney of Springfield, and Gary Courtney of Hampden; eight grandchildren and four great-grandchildren.

*~Edith Royer*



### Heath Emergency Services News

The following calls were answered since the last issue of the Herald:

3/08/01 - Number Nine Rd. - Medical  
3/00/01 - Main Street - Medical  
4/02/01 - Shawnee Drive - Medical  
4/11/01 - Colrain Stage Rd - Medical  
4/30/01 - Deer Run Path - Medical  
5/01/01 - Mutual Aid to Colrain - Medical

Additional training EMTs have attended include a Paramedic Assistant class and a Snowmobile Injury Rescue class.

Police Chief Lorin Gowdy and Officer Margo Newton recently are certified to use the defibrillator unit. Congratulations to both.

~ Timothy Lively - EMT

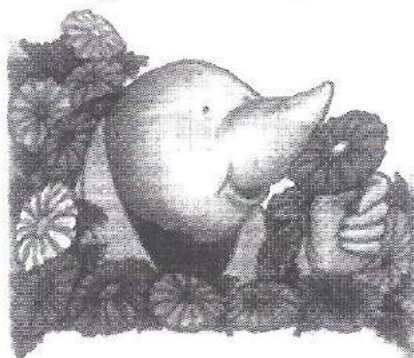
### HEATH SCHOOL KITCHEN

The cafeteria is open to the Community for continental breakfast, 8:30-8:45 and lunch from 11:30-12:00

337-5307 — Call ahead if you can

*Baked goods available  
most afternoons after 2:00*

MOLE HOLLOW  
CANDLES



Open Daily 9:30 am - 5:30 pm

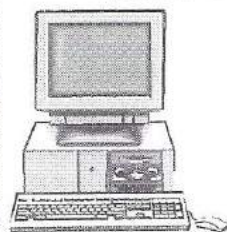
Overlooking the Glacial Potholes in Shelburne Falls, MA

413-625-6789

### Ladies Aid Sale

The Heath Ladies Aid sale will be held July 14, downstairs in the Community Hall, 10a.m. - 3p.m. Come to Old Home Day and stop to visit us.

### Cabe Delisle Computer Services



Cabe Delisle  
Call: 337-5716  
Email:  
cabedelisle@hotmail.com

I'm on call for any computer-related needs that you might have. Hardware, software, web sites, new computer help, and just about anything else you can think of.

\$10 for travel then \$10 per hour after the first. Show me the same thing cheaper and I'll undercut it.

### Bob Delisle Electrician

Prompt, Courteous, Reasonable

Lic. E34969

337-5716

### A.L. AVERY & SON

GENERAL STORE

Charlemont • 339-4915

### Richard C. Bishop

Elder Law Attorney

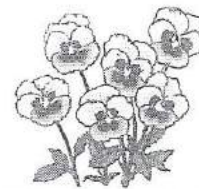
Massachusetts, Florida, Arizona

P.O. Box 121, Shelburne Falls, MA 01370  
413-625-2574 / fax 625-8321

40 School St., Suite 5, Greenfield, MA 01302  
413-773-1818 / fax 773-1881



## Dealing With Loss



---

Grief touches us all in a number of ways. We may lose our job, a friend, a pet, a valued treasure, a home, our loved ones. The loss can be anticipated or sudden. The intensity and duration of the grief will be different depending on whether there was opportunity to grieve before the loss. *Everyone grieves differently and every way is the right way for that person.*

Peter Lynch recognized that grieving is a process with five different "developmental stages" on the way to healing. They are:

1. Protest - The loss is realized and there is shock, numbness, confusion, anger, guilt, and physical symptoms.
2. Searching - In mind and body, sometimes carrying things that person owned, flashbacks of events spent with that person, lowered self-esteem.
3. Despair - Feelings of anguish, depression, difficulty concentrating, slowed actions, feelings of loneliness, meaninglessness.
4. Reorganization - Letting go of hope that they will return. Associated with this can be bursts of energy, fatigue, detachment from outside interests, apathy, fear of not getting better.
5. Reinvestment - A conscious willingness to let go of the past and a recommitting to life with a new identity and focus on the present, not the future.

Elizabeth Kubler-Ross in 1969 outlined her five stages of grief. They can occur before someone has died or after (with the exception of Bargaining):

1. Denial - The person may withdraw or wander aimlessly. They may act like nothing has happened, refuse to believe it and may reject offers of comfort. They may isolate themselves from sources of accurate information.
2. Anger - They may resist the loss and may act out to everyone and everything. They may be angry at the deceased or may retaliate against family, the doctor, and others. They may feel resentful and jealous.
3. Bargaining - This is a postponement of the reality of the impending loss. Here they are willing to do anything to prevent the loss. They may bargain with their higher power and may search for new forms of therapy and opinions.
4. Depression - This is the stage when the loss is realized and the full impact of its significance is apparent. It can be accompanied by overwhelming loneliness and withdrawal. There may be confusion, lack of motivation, indecision, crying. They may become quiet and noncommunicative, they may lose interest in their appearance, and they may attempt to cope by using alcohol or drugs. The depression stage provides an opportunity to work through the loss and begin to problem solve.
5. Acceptance - Coming to terms with the situation rather than submitting to resignation or hopelessness. This is when they can share feelings about the loss and reminisce about the past. Periods of depression can still occur but the good times begin to outweigh the bad. Life begins to stabilize.

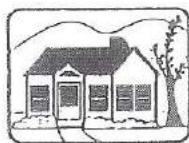
It is important to note that our grieving doesn't follow a subscribed path in this order. We all progress and regress on our way to resolution. We may feel angry for a while and then come to acceptance or feel depressed for a couple weeks, then be in denial. On our way to reorganizing our life, we develop a new self-awareness. While we're in the throes of grief, it is very hard to integrate this information. Just like life, it's a process. When you're ready, reaching out to others can be very helpful. Please don't hesitate to ask. People feel a genuine satisfaction in helping others.

My office hours in the Community Hall (337-4847) are Tuesdays from 12-1 p.m. and Wednesdays from 6 p.m. to 7 p.m. My telephone number is 337-5716.

~ Joanne Fortune, RN



Your independent Insurance Agency...  
For all your insurance needs.



**Blackmer  
Insurance  
Agency, Inc.**

1000 Mohawk Trail  
Shelburne, Massachusetts 01370  
Tel. 413-625-6527



*Transitions*  
come change with us

**A FULL SERVICE SALON**  
625-6855

39 BRIDGE ST. • SHELburnE FALLS, MA • 01370

### FRESH WINDS FARM

Paul & Marcella Lively & Sons

Excavating - Loam - Sand Stone 337-4331

**\*\*SCREENED LOAM A SPECIALTY\*\***



**D.C. BUILDERS**

Custom Homes - Remodeling

Licensed - Insured - Free Estimates

David Cote  
413-337-4705

Don Cote  
413-625-9339

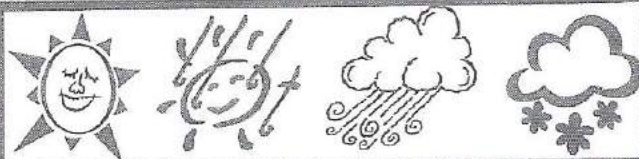
**MCCUSKER'S  
MARKET & DELI**  
SHELburnE FALLS, MASSACHUSETTS

*Quality Foods*

Now featuring Heath Beef!  
Freeman Farms Organic Beef—  
Steaks & Burgers to Please

625-9411

Now you can access Boswell's Books directly from McCusker's



### Weather Data

2001	Precipitation	Snow
April	1.43	0
March	6.92	54"
Feb	2.41	22"
Jan	7.7	10"

From April 12 to May 12 - No precipitation for a month although there still was snow in the woods May 1. We seem to be having every type of weather one can imagine lasting long enough to make us thoroughly sick of it.

~ Alan Nichols



"This publication is supported in part by a grant from the Heath Cultural Council, a local agency which is supported by the Massachusetts Cultural Council, a state agency."

**7 AM to 9 PM**

Do your Sleeping Bags, Quilts, Comforters,  
Bedspreads, Small Area Rugs, Etc., in our  
Large Front-Loading Machines.

**Village Coin-Op Laundry**

55 State Street  
Shelburne Falls, MA  
Tel. 625-2345



**The Baker  
Pharmacy**

Tel: 625-6324

Week Days 8:30AM - 8PM

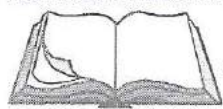
Saturdays 8:30AM - 5PM

Sundays & Holidays 9AM - 12 Noon

52 Bridge Street

Shelburne Falls





### A Definite Yes

Planning continues. The Library received notification in April of receipt of a \$15,000 state grant for a planning and feasibility study for future library space. Because the grant is a matching grant the Library asked the town for approval of \$5,000 at Annual Town Meeting, which was passed in a unanimous vote; the Library identified \$10,000 from trust funds and fund-raising to meet the other portion of the funding. A grant workshop for recipients is being held at the end of May, which Trustee chair Mary Boyd and I will be attending. The meeting holds the promise of providing lots of answers to this process on which we have just taken the next step.

A few individuals have signed on for our short-term Library Building Study Group, which will work closely with the Library Trustees to help determine our library building needs and proposals for the best course of action. If interested in this group, or if you have ideas about what you would like to see discussed in the planning process, please contact a Trustee, Mary Boyd or Deb Porter, or me. Already one or two individuals have brought forward their ideas for an even better library facility. Please, don't be shy about your thoughts!

### First of All, Read!

We are gearing up for our Summer Reading Program, "First of All, Read!" This summer we will celebrate famous firsts, and will combine efforts with our Friends of the Library and the Heath Agricultural Society. The Reading Program, in which all ages are invited to participate, will run from the first week of July until the second week of August. Watch the *West County News* for exact dates and activities.

### Earth Day

Our Earth Day celebrations turned out to be fun and informative. The Library was joined by the "Queen of Trash Tinies," Rachel Meyer, who helped combat the forces of evil in "Laurie's Landfill." A Saturday morning was spent with several young people creating innovative miniature worlds and artwork from throwaways. To this was added a compost bin display, a treasure trove of material on sustainable and green living gathered by and given to the library by Dawn Peters, and, as a surprise, Dawn's arrival in a borrowed hybrid electric car. Our thanks to Dawn for her great interest and energy in making the celebration a success. Too, thanks to Elizabeth Johnson, Town Coordinator, for obtaining the grant from Springfield Municipal Recycling which sponsored the programming.

### Organic Composting

*Organic Gardening Magazine* offers a chance to show off your composting skills in its "Compost Corner," a section of the magazine dedicated to beautiful and successful compost-

ing. Just send in a description and a photo of your year or older pile and they'll send you an official composter pin. This is just a note of mention because of the "Brave New Composters" cropping up around town these days. To send in an entry: Compost Pin, OG, 33 E. Minor Street, Emmaus, PA, 18098. There are additional details about their 2001 Compost Contest available at the Library.

### Remote Access

I've been noticing during the past few years that a great deal of research is being done via the Internet. The project questions being posed appear to becoming more dependent on access to electronic media as well as to traditional resources. At our library, once we've gone through the stacks, Encarta, or offered ILL for more resources, the students will often say they have tried on-line. This is a fine option, but, as I've been heard to expound upon, you don't always know whether your sources are valid. If tackling a research paper, you especially need to have credible citation sources. The Internet, in its anonymous accessibility, allows anyone to appear to be an expert.

One of my favorite tools, which the Heath Library and all other western Massachusetts libraries offer patrons, is "Infotrac." It's one of those underused hidden treasure troves. Infotrac allows access to nine databases: **Business and Company Resource Center** is comprised of company profiles, company brand information, rankings, investment reports, company histories, chronologies, and periodicals; **Contemporary Authors** provides complete biographical and bibliographical information and references on 100,000 U.S. and international authors; **Contemporary Literary Criticism** contains a collection of critical essays on contemporary authors, a biographical/critical introduction, listings of principal works, and sources for further study; **Expanded Academic** covers arts, the humanities, social sciences, science and technology, meets research needs across all academic disciplines, and accesses scholarly journals, magazines, and newspapers; **General Business File** contains business and management topics, with directory listings for 150,000 companies and investment analysts' reports on major companies and industries; **General Reference Center** searches magazines, reference books, and newspapers for information on current events, popular culture, the arts and sciences, sports, etc.; **Health Reference Center-Academic** accesses articles on: Fitness, Pregnancy, Medicine, Nutrition, Diseases, Public Health, Occupational Health & Safety, Alcohol and Drug abuse, HMOs, Prescription Drugs, etc.; **Infotrac OneFile** accesses humanities, education, business, science, current events, art, politics, economics, social science, law, health care, computers, technology, environmental issues, and general interest topics, and **Predicasts Overview of Markets and Technology**.

This database is accessible from home provided a household has regular Internet access. Should there be inclement

("Library Lines" continued on page 15)



# Heath Business Directory

## Members of the Heath Enterprise Council

**Bald Mountain Pottery**  
625-8110

**The Benson Place**  
Blueberries & Applesauce  
337-5340

**Fred Burrington**  
Artist  
337-4302

**Cable's Burnt Hill**  
Blueberries  
337-4210

**Coursey Design**  
Interior architecture & design  
337-4210

**D.C. Builders**  
Branch Hill Road  
337-4705

**Robert DeFisle**  
Electrician  
337-5716

**Russel E. Donelson**  
Design/Construction/Cabinetry  
337-4460

**Earl M. Gleason**  
Fire Equipment  
337-4948

**Heath Brook Studio**  
Glass and Baskets  
337-5736

**L & S Enterprises**  
Leisure Furniture Maker  
337-5505

**Patricia Lentz**  
Indigo Glassworks  
337-5375

**Maple Ledge Farm**  
Maple Syrup Year Round  
337-4705

**John Mooney**  
Custom Remodeling  
337-8344

**Wanda Mooney**  
Realtor  
337-8344

**Alan Nichols**  
Furniture Maker  
337-6665

**Russlin Saw**  
Power Equipment,  
Sales and Service  
337-8704

**C. Richards Steinbock**  
Graphic Design  
337-4746

**Phyllis E. Thane**  
Book Binding  
337-4759

**Tripp's Blueberries**  
Taylor Brook Road  
337-4964

**Paul Turnbull**  
Janice Boudreau  
Commercial/Wedding Photographers  
337-4033

**Bonnie Wodin**  
Custom Gardens & Landscapes  
337-5529

### Support Your Local Businesses

If you would like more information about the Heath Enterprise Council, please call Alicia Tripp at 337-4964

### Richard A. Sumner

Journeyman Electrician  
Mass. License #E22622 • Vermont License #J1245  
20A Eight A South • Charlemont, MA 01339  
(413) 337-4845



**Charlemont Pizza House**  
Main Street - Route 2  
Charlemont, Mass.  
Phone: 339-4472

### STEVE CROWNINGSHIELD BUILDING & REMODELING

REG. # 123769 LIC. # 075587

Fully Insured  
(413) 337-5561

25 Groll Rd.  
Rowe, MA

### A. L. Nichols Furniture

al.nichols.com

169 South Road  
Heath, Massachusetts 01346

alan@al-nichols.com  
413-337-6665



("Library Lines" continued from page 13)

weather (this has been known to happen) or if the library is closed and you need just a bit more information, and your paper is due the next morning (this has been known to happen) or for any other reason, just go on-line. Once on-line, type in the following: [www.infotrac.galegroup.com/itweb/mlin\\_w\\_remote](http://www.infotrac.galegroup.com/itweb/mlin_w_remote). At the screen it will ask you for your library card ID number. Heath's is: d560031529. Click on "Proceed" and you have access!

#### Last Notes

On a final note, and this time I really mean it, I am signing off from what began as a very cool job, but which, within a few weeks, became an encompassing part of my life. For my six years as Director I've been dreaming, breathing, and falling in love with our public library and the people who make it a part of their lives. A library is as vibrant as its community of supporters and the interplay between needed services and individuals' voices. This library has fashioned itself over its many years as one of the best!

A year or so ago I clicked my ruby slippers- well, scruffy brown birkies- and entered the gates of Mount Holyoke College, knowing I needed more tools to remain an effective advocate for our library, which, like all of our libraries, is changing so very rapidly. I had planned to walk in both worlds until I finished my degree, believing I could be true to both. That was hubris, or sheer naiveté, on my part, and so it is with great regret—and amazement—that I find myself resigning as Library Director.

There is no finer gift than being able to serve our town in this capacity. I'll miss seeing friends and townspeople on the regular basis to which I have become accustomed! An amazingly resilient and innovative creature, our library has weathered over 100 years the winds of time and the passage of people through Heath. I wish our library the joy of continued growth and vitality as the needs of our community continue to change and to challenge. My thanks to all who have contributed to the library in spirit, by participation, or donation of material or time, and who continue to make it a lively place for the meeting of minds.

Be well,

~ Laurie Wheeler Burrington

Take into account that  
great love and great achievements  
involve great risks.

**JennaLyn's**  
Country Gifts & Crafts...  
...from my heart & hands to your home  
Specializing in Decorative Country Woodcrafts  
Jenna Smith 337-4305 - Special Orders Welcome

#### HEATH DEED TRANSFERS

Earl W. Adams to Earl W. and Martha H. Adams, Colrain Stage Road and Fort Shirley Road, two parcels, no monetary consideration.

John A. Churchill Jr. by Ameriquet Mortgage Co. of Orange, CA, to Washington Mutual Bank FA of Seattle, WA, 3 Ledges Road, \$40,000.

Anita M. Cornish to Bannish Land Preserves, Inc., Rowe Road, \$25,000.

Virginia C. Esposito to Martin Murphy, 12 Clearwater Drive, Lots 22 and 23, \$1.

Ruth E. Johnson Irrevocable Real Estate Trust, Ruth E. Johnson, individually and trustee, to Robin H. Jenkins, Town Farm Road, Lot 1, \$1.

Cleon J. and Teresa M. Peters to Crystal J. Griswold, 76 Branch Hill Road, \$1.

Robert A. Schultz and Christine E. Luis-Schultz to Robert A. Schultz and Christine Luis-Schultz, Number Nine Road, Lots 3 to 5, less than \$100.

Washington Mutual Bank FA of Stockton, CA, to Cheryl Woodard, 3 Ledges Road, \$40,000.

Emily J. Woods and Guy L. Woods to Matthew R. Seery, 8 Shawnee Drive, only \$1,000.

Paul R. Young and Rosa Ann Young of Cromwell, CT, to Stephen Farias of Milford, Sadoga Road, 5 acres, \$5,500.

Your "I can" is more important  
than your IQ.

**Smith**  
Hardwood Floor Company  
Sanding & Refinishing of Old & New Floors  
Free Estimates - Insured  
Joshua D. Smith 337-4305

**FRANKLIN-WARE** 27 Bridge Street  
Shelburne Falls  
625-6470  
A Division of **RICE**

**CARLISLE WALLCOVERING**  
PAPERHANGING & INTERIOR PAINTING  
P. O. Box 175  
MICHAEL CARLISLE 413-625-9733





## *The Way It Is In The Country*

*"If it's old, works well and has a purpose in life, don't change it."*

### More About Longevity

---

By Carroll Stowe

---

Recently I've been thinking about using one of my older chainsaws. Way back in the late summer of 1959 my dad and I invested in a new McCulloch saw, model 170. This new purchase for our farm was a big help and much faster than our old gear drive models.

This unit saw a lot of service cutting the firewood from a hedgerow on our second farm. This new saw gave a lot of pleasure to me with its ease of operation. A lot of this wood was hauled to the Gleason place here in Heath, which became our home after my wife and I were married.

It is most amazing the energy one had earlier in life. I would work at cutting this wood during the day and take the load to Gleason's, unload and go home to do the milking, eat supper, and return to work up the wood and pile it in the cellar with my wife-to-be's help.

The previous winter I had worked on a right-of-way project for the first set of wooden towers on the big power line here in North Heath. The saws we used were big Homelite units. They were good equipment but vibrated severely and caused me no end of sleeplessness because hands, arms, and shoulders would be asleep. Our new saw was 100% without vibration. I think this saw's purchase price was nearly \$400.

This unit did lots of work but with the passage of time and when lighter weight saws becoming available, this older piece was used less and less. A good excuse not to work it was the fact that the original muffler burned out making its operation unpleasantly loud. Eventually I was able to purchase a new muffler and have had it around for some time since 1994, but the lighter saws were much easier to use and less tiring.

On Tuesday April 10, I installed the new muffler. On Wednesday I took the saw with me to the Rowe Highway Department where I was able to use the heavy vise to hold the saw, making it more easily cranked. With a couple of whiffs of starting fluid it came nicely to life not having run since the late 80s or early 90s. I don't see that it operates any less well than when it was new. This saw works well where it can be placed on a log and blocked into chunks or blocks - not something that would be fun to limb a tree with.

If it were to mess up and not run, its repair would be a problem, but I can hold on to a piece of the past and enjoy its operation. One can only feel shortchanged when a major expense purchase fails to have as long a life as this old saw has had. The McCulloch brand of saw was not as popular as some other equipment. I was at a Charlemont gas station some time back and had one of my lighter Mac saws on the truck. A fellow chainsaw operator noticed the yellow unit and told me he guessed I didn't plan to do much that day. I asked why and was told that if I wanted to amount to anything I wouldn't bring a Mac saw.

I will always be disappointed by the fact that a large company could create a dependable unit like our old saw and then put themselves out of business with poor quality merchandise in later years. It is not right to take one's purchase price for an item that won't serve well. I have proof that it can be done. Enjoy whatever saw equipment you have.

---

("Mohawk Has a Greenhouse" continued from page 7)

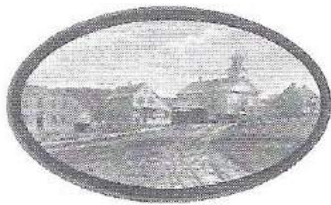
according to Ms. Stewart, and returned daily. In the fall, he will be going to Greenfield Community College, then onto more serious study in agriculture. She hopes that other students will become involved.

The greenhouse is in its second year of CSL grant finding which ends this year. Ms. Stewart is working to find alternative sources of funding. Because of the staffing at the school, she has been able to devote only one period a day to the project and feels that there is a need to expand it to at least the two originally proposed. Among other projects, she pointed to nearby piles of TRG material that are waiting to be laid down for a walkway that would make for easier access for all including wheelchairs.

When asked about her hopes and dreams for the greenhouse project's future, Ms. Stewart mentioned the hope for permanent funding built into the budget that would secure its future and expand its use in the curriculum. She hopes to find volunteer community members to help with the greenhouse and other related activities and is always looking for donations for the garden and greenhouse such as potting materials, flats, growing mix, fertilizers, pest control solutions, tools, etc. If anyone would like to contribute in any way, Ms. Stewart can be reached at the school at 625-9811. Please leave a message, and she will return your call.



## ~OLD HOME DAY~ JULY 14, 2001



Heath Historical Society -  
"bringing the community together for fun and history"

### EVENTS & ACTIVITIES

Fun, games, music, food, crafts, and historical events.

- 18th Century paper gowns created by Edward Maeder
- Music by "Small Change"
- Quilts display and quilt raffle
- Michelle Held will use old-fashioned materials and methods to assist children and adults in making toys and games.
- Heath Historical Town House & Schoolhouse open.
- Vintage clothing contest: Adult, teen & youth\*
- Food concessions - lunch & dinner
- Crafts by local artisans
- Tag sale items

\*Vintage clothing designer, Joan DeGusto, will conduct two workshops to assist and inspire those interested in creating a costume for the Old Home Day celebration. Dates & times for these workshops will be posted.

More detailed information will be posted in the near future.

PLEASE ATTEND THIS CELEBRATION.  
Call Jack Cable at 337-4454 for information

### BURNT HILL FARM

Jack and Beverly Cable  
337-4454

### SWEET WILD BLUEBERRIES

PICK YOUR OWN

AUGUST 3, 4 & 5; AUGUST 10, 11 & 12  
Wholesale and Retail

Now in our 35th year!

Come up and Enjoy the Reason Why.  
Nature's No. 1 Antioxidant:  
Sweet Wild Blueberries

Congratulations to Jane Swift, Governor,  
Wife, Mother and Friend



### A Community In Action

We held our annual Saint Patrick's Day dinner on March 17. It was disappointing to see the lack of support from the townspeople. There aren't many surrounding towns that have community halls to hold functions of this nature. We want to thank the people who came and enjoyed the dinner with us.

The town is in the process of acquiring a grant which would pay for hall repairs and update the kitchen. This grant would restrict the use of the hall to senior functions for a period of five years, however. There is the possibility that seniors could sponsor some of the regular events that take place at the hall. More on this at a later time.

On July 14, the Hall Committee will once again put on a supper for "Old Home Day." Watch for more information on this.

Please be supportive of our committee as we are here working for you.

~Val Kaempfer, chair  
Community Hall Committee

## WANTED

### WWII Veterans

Who left Arms Academy, Sanderson Academy or Charlemont High School between the dates of September 16, 1940, and December 31, 1946, without obtaining their high school diplomas.

Mohawk Trail Regional High School will award these individuals their high school diploma at a school assembly on a date to be announced. The veteran must apply and show military eligibility in order to obtain his or her diploma.

These diplomas may also be applied for posthumously by the veterans' next of kin, and those who have obtained their GED are also encouraged to apply.

Requirements are that the veteran must have served between the dates mentioned above and been discharged "Honorably" as well as attended the schools listed above.

Applications and further information  
is available from:

- Leo Parent c/o Veterans' Services, P.O. Box 392, 190 Millers Falls Rd., Turners Falls, MA 01376, (413)863-3205
- Avis A. Whitehouse, 371 Cummington Rd., Ashfield, MA 01330, (413)628-3916



## Blueberry Time



Blueberries have heralded summer here in Heath for a long time. We have our own "Blueberry Hill" and people come from near and far to pick blueberries.

Jack Cable, of Burnt Hill Blueberry Farm, has long held a place of distinction here in Heath. Jack holds a blueberry baking contest at the Heath Agricultural Fair in August and the winners are judged to be "Jack's Favorite." These are two of Jack's favorites over the years.

Enjoy!

### Blueberry Pizza

From Dot Stetson. Carly Natowicz used it for the first "Jack's Favorite" at the Heath Fair in 1944. The recipe was originally for strawberry pizza.

Use refrigerated sugar cookie dough, remove from plastic wrapper and pat into a 12" pizza pan (Dot uses a one egg sugar cookie recipe). Bake as directed on the wrapper.

Whip together:

- 18 ounce, package cream cheese
- 1 cup confectioners sugar
- 1 cup sour cream

Spread on the crust and arrange blueberries on top.

Top with glaze:

- 2 cups water
- 1/4 cup cornstarch
- 1 1/4 cup sugar
- 1 small package of Jell-O

Stir sugar and cornstarch in 1/4 cup of water, add the mix to remaining water and bring to boil. Remove from heat. Add Jell-O and set aside to cool.

(Dot uses 1/2 the glaze she makes - again with the blueberry pizza, she uses blue mixed fruit Jell-O and adds a few drops of blue food coloring.)

### Burnt Hill Blueberry Bars

- 1 cup sifted flour
- 1/2 cup butter
- 3 tablespoons confectioner's sugar
- 2 eggs, slightly beaten
- 1/2 cup sugar
- 1/4 cup flour
- 1/2 teaspoon baking powder

- 1/4 teaspoon salt
- 1 teaspoon vanilla
- 1 teaspoon lemon juice
- 1/2 cup coconut
- 1/4 cup blueberries
- 1/4 cup chopped nuts

Heat oven to 350 degrees.

With hands, mix 1 cup flour, butter and confectioners' sugar until smooth.

Spread thin with fingers in a 8x8 greased pan. Bake about 20 minutes.

Meanwhile, stir remaining ingredients - except nuts - into eggs adding blueberries last.

Spread on top of baked dough and top with nuts (sprinkle them on until you think it looks like enough).

Bake about 25 minutes more. Cool. Cut into 2x1 inch bars. Makes 20.

### ATTENTION ALL REPORTERS, WRITERS, AND OTHER HEATH HERALD CONTRIBUTERS:

**PLEASE BE AWARE OF THE JULY 10TH  
DEADLINE FOR SUBMISSIONS.**

Mail to: P.O. Box 54, Heath, MA 01346 or drop materials off in box at the Town Hall entryway.

Eggs cannot be unscrambled.

~American proverb

### Heath Brook Studios Glass and Baskets

"Bob and Jayne Dane"

By Appointment Year-Round In Heath Center  
337-5736



### ROWE CAMP & CONFERENCE CENTER

Located in the beautiful Berkshires, Rowe is widely respected as one of the finest small conference centers in the country. We offer weekend retreats with renowned leaders including John Bradshaw, Malidoma & Sobonfu Some, and Alberto Villoldo this season. For a beautiful free brochure please contact: Rowe Conference Center  
22 Kings Highway Road Rowe, MA 01367  
(413) 339-4954



## Library Bake Sale a Success

The annual bake sale of the Friends of the Heath Library was held, as usual, on the Saturday of Memorial Day weekend on the porch of Sawyer Hall. The predicted rain held off until the afternoon which helped brisk sales and allowed time for neighborly exchange. The sale was very successful thanks to all of you who baked and/or bought. All proceeds, as always, will go to fund library needs.

~Jane de Leeuw

## Heath Variety Show 2001

This year's variety show is now in the past but it will live on in the memories of all who participated in it or attended the performances. Sickness and weather were major obstacles that seemed to coincide with many of the rehearsals but in spite of all that worked against it, the show went on and was a major success.

A two-day event, Saturday and Sunday, March 31 and April 1, the show was emceed by Wocka, a 30-inch puppet with a big yellow face and dressed in suit and tie. The "variety" featured youth and adult performers including singers, musicians, dancers, and actors who thrilled the audience.

After the last show on Sunday, Emcee Wocka, the creation of John Reilly of Colrain, held audience from his wing back chair in the library for the children as they left the gym on their way home.

The show was professionally tape-recorded. Those who were unable to attend the show can obtain copies for \$15.00 at the Heath school.

~Dianne Cerone

## Some Cast Members of the Comedy Show - May 5, 6



Back row left to right: Angela Almeida, Patrick Tuterice, John Tuterice, Kathleen Tuterice, Kim Reily. Front row: Dove Avylla, Adam Almeida, Christian Almeida, Jim Cerone, Mary Tuterice. (All from Heath with the exception of Kim Reily and Dove Avylla)

## News From the Academy

### Academy's Twentieth

On Saturday, May 19, over one hundred alumni/ae and friends of The Academy at Charlemont gathered to celebrate the school's twentieth anniversary. The day began with a family hike in the Hawley state forest led by Academy environmental science teacher and naturalist John Burns. During the afternoon, a group of alums organized soccer teams and played for hours. The evening reception was followed by a dinner held in the school's recital hall. Oliver Stebich '88 and Maisie Todd '89 put together a terrific slide show that included images from all twenty years. The event was attended by all six of the school's founders and by graduates who now live all over the country.

~Todd Sumner

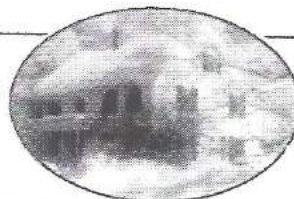


**Wanda**  
Mooney CRS.GRI



Call today for a FREE  
market analysis on your home... 413 337-8344

## Maple House



The house on the hill with the view of yesteryear  
Reward your friends and relatives with a restful night's sleep high in the hills of Rowe. They'll awake to a hearty homegrown breakfast in a 200-year old inn and family farm. See the stars, breathe clear fresh air, relax in the quiet beauty of spectacular views of the Berkshire Hills.

Lodging and Breakfast from \$45. Call for Reservations.  
Middletown Hill Road (413) 339-0107 Rowe, MA 01367



## Poetry Corner

April 2001~ Heath

I heard two robins chirping  
out on the lawn today  
so I moved a little closer  
to hear what they had to say.

"We traveled far and wide," they said,  
"to view the buds and grass  
but all we find  
is mud and snow.  
We thought all this had passed."

"Are we too early  
or too late?  
Did we somehow  
miscalculate?"

We always follow  
mother nature's rules,  
but this year she made us.....  
April fools!"

~by E. Tougas

(413) 337-4210 Phone  
(413) 337-5732 Fax



**JAMES CERONE  
BUILDER**  
Custom Homes - Renovations

Lic # 047734  
Hic # 124493

239 Number Nine Rd.  
Rowe, MA 01367

**HEATH HERALD**

Box 54

Heath, MA 01346-0054

FORWARDING & ADDRESS  
CORRECTION REQUESTED

Bulk Rate  
U.S. POSTAGE  
PAID  
Permit No. 11  
Charlemont, MA 01339

Unsprayed, Low Bush Wild Blueberries  
and a sense of place at



**The Benson Place**  
Heath, MA



Pick your Own - Selected Fridays, Saturdays and Sundays  
July 27 - August 26, 2001

10 am - 4 pm

Also available in 10 and 20 lb. boxes for your freezer  
Call (413) 337-5340 to confirm/for directions  
davegott@hotmail.com

**Frederick M. Burrington**

Artist

Photorealism in Watercolor, Pastel, Color Pencil, Ink and Pencil.

Commissions Welcome

P.O. Box 96, Heath, MA 01346  
Tel (413) 337-4426 Fax (413) 337-0221

**We're  
With You  
Every Step.**

SAVINGS ACCOUNTS  
MONEY MARKET ACCOUNTS  
INTERNET &  
TELEPHONE BANKING  
MORTGAGES  
HOME EQUITY LOANS  
BUSINESS LOANS  
LIFE INSURANCE  
TRUST ADMINISTRATION  
INVESTMENT ADVISORY  
& MANAGEMENT



**GREENFIELD SAVINGS BANK** Since 1869

GREENFIELD 774-3191 • TURNERS FALLS 863-4316  
SOUTH DEERFIELD 685-4011 • SHELburnE FALLS 625-0527  
www.greenfieldsavings.com



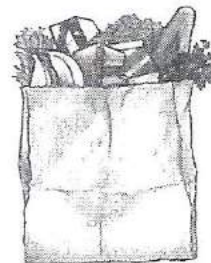
Member FDIC  
Member DIF

**PETER'S GENERAL STORE**

Debbie and Paul Plante, Proprietors

Number Nine Road, Heath  
337-5501

- ◆ Fresh Produce
- ◆ Freshly-baked pies
- ◆ Blue Seal products
- ◆ Family Videos
- ◆ Penny Candy
- ◆ Soda, Grinders, Ice Cream
- ◆ Beer, wine, liquor
- ◆ All food essentials



**STORE HOURS**

Monday - Saturday, 8 a.m. - 7 p.m.  
Sunday, 9 a.m. - 7 p.m.