

VOLUME 3 NUMBER 2 JUNE/JULY 1981

# HEATH HERALD

HEATH'S FIRST NEWSPAPER

25¢

## ACTIVE SUMMER AHEAD FOR CHURCH

By Rev. Ann Geer

The Heath Union Church will sponsor a series of community dinners this summer. The first, a ham dinner, will be served on June 13 at the Community Hall. Call 7-4732 for reservations. Other meals are planned for July 29 and August 22.

The Heath Youth Group is sponsoring a play "The Belle of Amherst", starring Jennifer Corey. Performances are scheduled for June 19 and 20 at the Greenfield High School. Tickets are \$3.50, and \$2.50 for students, with showtime at 8:00 PM.

The annual Church Auction is to be held on the Fairgrounds on July 25. If you care to donate anything, please contact Richard Sumner.

Last month we welcomed Amy and Craig Barry into the membership of our Church; baptized Amy Elizabeth, daughter of Ed and Susan Croteau; also Andrea Ann, daughter of Robert and Pamela Belval; and celebrated the life eternal of Tena Percival.

We have completed the Church School year. Awards and certificates were presented to the students and appreciation of the membership was extended to the teachers, youth group and advisors at the service on May 31. Jody Scalse, a local mime artist, joined in the celebration of another successful school year. We plan to offer a Vacation Church School program in August.

We continue our commitment of being available to minister to the needs of the community. Please let us know of any way we may be of service.

## NEW LOOK FOR HEATH HERALD

With continued increases in costs of mailing and printing, the HERALD has faced the difficult problem of keeping the cost to our readers from rising.

With this issue we have found a solution. By using smaller type size, comparable to most newspapers, eight pages in our new format contain almost as much information as twelve pages of the former size. This saving, coupled with continued support from our advertisers, enables us to hold the present subscription and newsstand prices.

The HERALD does not operate for a profit and its policy is to accept only enough advertising to cover expenses.

The Editors will appreciate any comments from our readers on the new format.

## HEATH STUDENTS GRADUATE

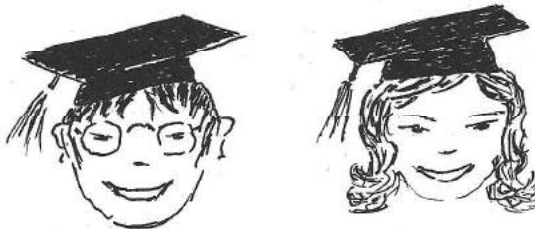
Congratulations are in order for the following students who are graduating from their respective schools in June.

Graduation from the Rowe School are: Arthur Churchill, Bonnie Cobb, Kenny Cole, Nicole DenOuden, Sheli Galipo, Glenn Gleason, Michelle Howe, Jessica Kain, Sean Rabbit, Larry Sherman, Mike Smith, Ree Sumner, and Kenny Thane.

Graduating from Mohawk Trail Regional High School are: Brenda Cromack, Heather Fogarty, Suzannah Kincannon, Robin Law, Malvin Lively, Michael Phillips, Elizabeth Reilley, and John Scofield.

Tim Lively and Brandon Peters are graduating from Franklin County Technical School.

## CONGRATULATIONS



Success And Happiness  
To you ALL

## FINANCE COMMITTEE REPORT

The first meeting of the Heath Finance Committee for FY 1982 was held June 2 at the Town Hall. New member Bruce Warner was welcomed to the Committee. Dave Howland was elected chairman and Walter Gleason, secretary. There was general discussion about plans for this coming year, and speculation about the impact of increased state aid on the town's tax rate. The next meeting is scheduled for July 6 at the Town Hall.

## LETTERS

To the Editors:

Our little paper is beginning to blossom. I must complement all who contribute. The latest issue (Feb.-March) was a particular delight.

John and I have enjoyed the "Older Houses in Heath" series particularly, since we are newer spring, summer, and fall residents.

My favorite is "Wintering in Heath". It was a thoughtful and sensitive piece.

Finally, thank you for continuing to provide us with timely community information and now artistic writing.

JUDY DOHERTY, Medford, MA

To the Editors:

..... The bells start ringing when the HEATH HERALD arrives here. It's a great paper.

BILL KIRK, Hamden CT

## MILESTONES

Katelyn Anna was born to Sheila and Budge Litchfield on April 7. Katelyn is the granddaughter of Carolyn and Ken Litchfield, and the great granddaughter of Leon Stewart.

Bret Thomas was born to Tina and Thomas Wood on April 21.

Mrs. Tina Percival died on April 13. She leaves her husband Howard and a niece Mary Smith.

## HEATH PRECIPITATION

By Ralph H. Dickinson, Observer  
for Mass. Water Resources Commission

April rainfall: 2.73 inches      May: 4.41 inches  
Total precipitation,

January through May 1981: 19.27 inches

Those of us who plant crops and garden were pleased to have the showers the last three days of May that gave us 1.73 inches of rain.

## HEATH HERALD

Volume 3 Number 2

Editorial Staff

Advertising & Business

Art Design

Circulation

Typography

Contributors to this issue:

Edith Royer, Catherine Cromack, Amy Barry  
Catherine Nichols, Jennifer Corey.

The HEATH HERALD is published six times a year in April, June, August, October, December and February. SUBSCRIPTION RATE - By first class mail: one year \$2.50 (payable in advance by check or money order only). ADVERTISING RATES - Display Ads: \$3.50 per column inch (Discounts on six or more insertions). Classified Ads: \$1.00 per line. Send all correspondence to Box 54, Heath, MA 01346

June - July 1981

Pegge Howland  
Caroline Smith  
Alli Thane

John Read  
Harriet Read  
Terry Pettengill  
Newland Smith

## LIBRARY NOTES

By Edith Gleason, Librarian

Summer is here and "How is your garden" is heard again and again.

Soon we will all be looking for ways to use all those luscious vegetables and fruits. Have you seen our cookbook collection? It could help you solve your dilemma.

Heath Fair is coming. We can't guarantee you will win a prize, but we have books that can help you towards the goal.

Do you want to explore or visit a new area? We have books describing many places. We also have some new books on the "American Wilderness".

Do you like to putter around home? Examine the "Home Repair and Improvement" books.

I haven't a list of new books this time, but we have quite a few new ones for all ages. We also received gifts of books recently from the Coes, the Housners, the Maitlands, the Reads and the Leuchtmans.

Laura Holdsworth has read 20 books this spring and received an honor certificate. Several others are working for certificates. Our story hours are going well and we could use more volunteers. The more volunteers the fewer times you will be called.

## 1981 HEATH FAIR PLANS

By Claire Hatch

The Heath Agricultural Society is making final plans for the 64th Annual Fair to be held August 14, 15, & 16. The traditional events such as flea market, rides, square dance, parade, and good food are all on the program. New in the music department are Eric Goodchild, of Shelburne, who will entertain on the bagpipes; the "Country Classics", a country western band from Pittsfield; and a banjo contest replacing the fiddlers' contest.

The horse drawing event will be held on Sunday instead of the usual Saturday due to a conflict of dates with other fairs. Tractor pulling, which was a new and successful feature last year, will be held on Friday, and the oxen will draw on Saturday. A church service will be held at 9:30 on Sunday morning on the grounds.

Plant your gardens, sew your quilts, and groom your animals with the fair in mind and join us at our meetings on the first Tuesday of each month at 8 PM at the Fairgrounds.

## FRANKLIN-WARE

— SHELBURNE FALLS —

Fuel Oils  
Propane Gas  
Coal

Heating Supplies  
Gas Appliances  
Burner Service

## UNISEX STYLING AND HAIR CARE CENTER

**Hazel's**

Complete Beauty Services  
for Hair & Skin

100 Federal Street  
Greenfield, Mass. 01301  
Phone: 773-8683



## PLANNING BOARD REPORT

By John Holdsworth

When the regional solid waste program was first proposed, there was great excitement among county planners and it looked as if an incinerator could be approved, funded and built in 18 months. Things have slowed down a bit now, but committees and sub-committees are being organized and a scheme for completion should be available by fall. A feasibility study will be done this summer. It is likely that the lease on Heath's present landfill would be extended for a year, or perhaps two, with the assumption that an alternative site or facility would be available to the town by then.

Earl Gleason has agreed to serve as Planning Board Chairman for the coming year. John Holdsworth is Secretary and Tom Lively is the Franklin County Planning Board Representative.

In a special meeting, the Planning Board decided to ask New England Telephone Co. to apply for a special permit to locate transformer cabinets on the lot south of the Community Hall. Public hearings are held on all special permits; this will allow any concerned townspeople to voice their opinions.

David Howland attended a recent Planning Board meeting and brought some information from a consulting firm that assists alternative energy producers in analyzing project feasibility. Both David Howland and the Planning Board would like to interest some businesses in coming to Heath; the long range goal being to broaden the town's tax base.

The Planning Board has a short range goal of completing the zoning bylaw revision by early fall.

## WINDMILLS IN N.H. BUT NOT IN HEATH

By John Holdsworth

Windpower still hasn't been harnessed in Heath, but it's a different story at Crotched Mountain Rehabilitation Center in Greenfield, N.H. On the 24th of April, Edith and Earl Gleason and John Holdsworth attended the dedication ceremony for the first windfarm in the world at CMRC.

U.S. Windpower, Inc., the same firm that considered the Burnt Hill site in Heath last year, finally achieved its goal by erecting 20 windturbines on a knob near the Rehabilitation Center. From the dedication site we should have been able to see the turbines, but a pea soup fog surrounded us and cut off the view. During the ceremony we couldn't help but feel some regret that the event wasn't taking place in Heath instead.

Following several short speeches, we had a walking tour at the installation. The generators are on tubular steel tripod towers with angle iron bracing. The 60 foot towers step up the hill in a row of eight; the other 12 towers are in a cluster around the hill top. No guywires are necessary as the tripods are bolted to concrete or ledge. Each generator is driven by a three bladed propeller 40 feet in diameter and will produce 30 kw at 25 mph wind speed. Minimum wind required is 10 mph.

CMRC and USW presented the windfarm concept to the town of Greenfield in Sept. 1980; a public hearing was held on Oct. 13. Approval was given and windfarm construction began on Oct. 20. Construction was completed on the project just 75 days later. First power was sold to Public Company of N.H. on New Year's Eve. Visitors are welcome at the site on Saturdays from 10 to 2. The drive is about two hours from Heath.

## ERIC GRINNELL TO HEAD NEW ACADEMY

By Alli Thane

The Academy at Charlemont has been founded as a private co-educational secondary school. The Academy offers a college preparatory course of study in liberal arts and science in an environment fostering learning and individual growth. This has been taken from the new Academy catalogue.

The Academy is located in the old Charlemont high school and the appointed headmaster is Eric Grinnell of Heath. In a recent interview with Mr. Grinnell he stated that the school is now expanding to include a middle school - 7th and 8th grades. He has responded to over 100 requests for applications. These have come from as far as Long Island, Westchester NY, and Connecticut. He is seeking local families to board these students. Financial aid for this service can be discussed or, if the host family has a child interested in enrolling at the school, a trade-off is acceptable. The host family must provide transportation, but a system of car pooling is already in the planning stage.

The officers of the corporation are: David McKay, Charlemont, president; Lucille Joy, Shelburne Falls, treasurer; Diane Dewhurst, Whitingham, clerk; and other officers are Eric Grinnell, Heath, Margaret Carlson and Patricia McKay, Charlemont. Tuition is \$2200 for the year with additional annual fees for books, materials, athletics, health services and food totally \$380. Opening day of the school will be September 14.

## THE COMMUNITY HALL

By Alli Thane

The Community Hall Committee met with the Selectmen on June 1 and accepted with regret the resignation of Lucia Finck from the Committee. It was decided to increase the Committee to five members. Dolores Churchill, Theresa and Cleon Peters have been added. Cleon Peters has been hired by the Selectmen to do small repairs needed in both Community and Sawyer Halls.

Major repairs to the Hall were discussed and it was decided that these must be completed this summer: the drainage problem around the hall; the faulty heating system; and the roof repairs still pending. The scraping and painting of the hall was brought up as the next project and it was suggested that this might be done by a work-bee.

It was decided that diagrams of the water, sewage and heating systems of both buildings be produced and displayed in each hall. Selectmen Paul Lively and Edward Calver offered to do this project.

Most of the safety repairs to the hall have been completed; railings, exit signs, lights in stairwells, and emergency lights have been installed. The hall is now ready for building inspection.

compliments of

**Wells Corner Country Store**

CHARLEMONT 339-6632



## AN EXCURSION TO GREECE

By Todd Sumner

(As a junior at Mohawk Trail High School, Todd was one of a group of students to take this trip)

Good Friday, April 27, 1981, will remain in the memories of twenty local residents as something more than the beginning of spring vacation. That morning we arrived at Mohawk bringing suitcases in each hand, passports in pockets, and lots of eager anticipation on our faces as we prepared to embark on what would be, for many of us, our first trip abroad. Marshalled by our fearless leader, Mr. Eric Grinnell, we set out via limousine for J.F.Kennedy Airport, where we were met by two other friends bringing our party to 22, 11 adults and 11 students.

After a rather crowded 10 hour flight, we arrived in Athens, the wellspring of Democracy. During the next day and a half we viewed the Acropolis, Agora, and various museums. On Monday we set out for Crete, where we visited Knossos, the palace of King Minos (from whence Minotaur legends are sprung) and located the ancient Minoan temple. From Crete we sailed to the lovely resort island of Myconos where we swam in the breathtaking turquoise waters of the Aegean. A sortie was made from here to the sacred island of Delos, power seat of the famed Delian League. From Myconos we sailed back to Athens for a brief stay before heading out over land to see Corinth, Tiryns, Mycene, Epidaurus, Argos, Thebes, Olympia (which, by the way, contains not only the site of the original Olympics, but also in the author's opinion the best pastry shop in all of mainland Greece) and also Delphi. At Delphi we visited the temple of Apollo, the most important oracle of Ancient Greece, and lunched upon the slopes of mighty Mount Parnassus. From Delphi we motored back to Athens on May 1, and celebrated our last evening together with a night on the town, during which Mr. Grinnell, who had been through a lot in those two weeks, was presented with a laurel wreath and crowned Emperor of the World, a title which he relished greatly.

Our faces were long the next morning as we boarded for what turned out to be a very pleasant flight home. Those two magic weeks, along with all we learned, will remain among our fondest memories much longer than any knowledge gained from a musty textbook, and I'm sure we'd all do it again in an instant, and I hope that someday, we shall have the chance to return, for it certainly deserves another month, at least.

## ASSESSORS' REPORT

By Richards Steinbock

We have begun the first steps toward revaluation. The state sent us a letter last week approving of our plan. We have met with Ashfield's Board and discussed their land valuation system. They are already classified and certified. It was a very useful meeting and we learned quite a bit. Later this month we will meet with Charlemont to see what their system has to offer us.

We have engaged the services of Spencer-Fitts, Inc. (the company doing Colrain's revaluation) on a consulting basis. Their representatives will meet with us from time to time, as we need them, to oversee our work. This professional review is one aspect of the state revaluation plan which is required.

On June 10 we will be attending a mandatory classification seminar put on by the state.

At some point we will be coming to view the interiors of all homes in town. We will try to make arrangements with everyone in advance.

All in all, if we are to finish this job in time for next year's tax bills, it looks as if we are to have a fairly busy summer.

## FIRE DEPARTMENT NEWS

By Chief Earl Gleason

Since the printing of the last HEATH HERALD, the Fire Department has responded to two brush fires, one chimney fire, and one reported motorcycle accident. So far we are well below last year's record pace.

Several firefighters are attending a course by the Mass. Fire Academy. This is held twice monthly at the Charlemont Fire Station and covers most elementary firefighting skills.

In addition, Chief Gleason attended an all day arson investigation school sponsored by the Franklin-Hampshire District Attorney's office. Arson exceeds all other crimes in the amount of property loss in Franklin County.

A record number of 105 permits were granted during the recent burning season which closed April 30. This is almost a 25 % increase in permits.

The Department is planning to sell root beer (home made) at the Heath Fair this year. We could use your clean two-quart soda bottles.

Two of the needs of the Department are as follows:

1. We need someone who is at home most of the time and who would be willing to tend to a Red Phone.
2. We could use someone who would be willing to tend to the Base Radio Station at the Fire Station during fires.

The schedule of Fire Department meetings is somewhat confused at this time in working around the classes at Charlemont. If you are interested in attending, contact Chief Gleason.

### The ANTIQUE CENTER of OLD DEERFIELD

10 Shops on Rt. 5-10  
Open 10 to 5 Daily

Diane Peterson - always buying

Tel: 774-5197

### Richard A. Sumner

Journeyman Electrician  
Mass. License #E22622  
Vermont License #J1245  
South Road, Heath  
413-337-4930



**The Baker  
Pharmacy**

**YOUR REXALL STORE**

Tel: 625-6324

Week Days 8:30AM - 9PM

Saturdays 8:30AM - 6PM

Sundays & Holidays 9AM - 12 Noon

52 Bridge Street

Shelburne Falls



## THE SULLIVAN TAFT HOUSE

(This is the sixth in a series of articles on the older houses in Heath. The Taft house is located on the east side of the old Oxbow)

One wonders why Sullivan Taft in 1804 chose to buy 105 acres in one of the windiest and coldest spots of Heath (or at least it was after he had cleared the 20 or more acres around the location for his house). Even though the eastern view to Mt. Monadnock is beautiful, it is doubtful whether the Tafts gave much thought to it as they built their barn across the road in front of the house, blocking the mountain view. Also he located the house facing east, so that the southern exposure to the sun is blocked by the kitchen ell and woodshed. However, these thoughts are 20th century ones, not to be concerned with in 1812.

In that year Sullivan Taft built a sturdy, handsome farmhouse and moved his wife, Sarah Flagg, with their three children to live in it. The Tafts must have been very proud of their house, painting a delightful horse over the front door, and Sarah stencilling the walls of many rooms. It is said that it was "the first house in Heath to be raised without the benefit of rum". This no doubt stems from Sullivan Taft's position as a deacon in the Baptist Church.

There is something puzzling about the construction of the house. It has two large chimneys with six fireplaces and two brick ovens for two kitchens with two woodshed ells (the west one later removed). Just who the second family in the house was is a matter of conjecture. Widow Abigail Taft (1754-1840) is buried in the Center Cemetery, and it is possible that she came to live with her son and daughter-in-law. In 1836 the Taft's daughter, Sarah Marie, married Orville Brown and one half of the house was deeded to Brown, the "double" house thus being used twice to good avail.

The barn, some 300 feet in front of the house, must have been hard to get to in winter to care for the cattle. There was a dug well next to this barn for watering the animals. At some point in later years the barn was moved to a point just south of the kitchen ell where it stood until 1928, when a strong wind took it down one winter. This location made it more accessible and also allowed a spring to feed through a lead pipe to the stable. Because of a limited fall from the spring, it proved to be unreliable and again they had to fall back on dug wells near the house. The main dug well, some 25 feet deep and lined with stones, still exists and was used to supply the house with a hand pump up to 1930.



SULLIVAN TAFT HOUSE c 1921

## TAFT HOUSE (continued)

In recent years, after removing layers of wall paper, the original Sarah Taft stencils were found, decorating the walls of the four front rooms and the two halls. These can still be seen in three of the rooms and the upper hall. It seems clear that these stencils were her own design, not that of an itinerant stenciller. As far as is known no other house in Heath has been found to have stencilled walls. How Sarah Taft had time to do all of this is something for we "busy" people to think about, for she was a farmer's wife and bore seven children. No doubt she enjoyed mixing the paints from buttermilk and various seeds and cutting the stencils.

Sullivan Taft was one of the leaders in the Baptist Society in Heath and the members often met at his home. The church was then located near the corner of the Oxbow and the Colrain Stage Road. He was a deacon for many years and also served as a representative in the General Court 1826-1827.

After the Taft family sold the property in 1852 and 1858, it went through several owners before the Tanner family bought it in 1883. Oliver Tanner and his family moved into the house from the old George Sessions place about 1895.

In the summer of 1920 the Newland Smiths Sr. "discovered" the farm, while on a trip to Fort Shirley, and bought it from the Tanners the next year. It has been in the Smith family ever since and used as a summer place until seven years ago, when the present Smiths decided to live here year 'round. Much has been done to restore the main part of the house to as near the original Taft conditions as feasible. All of the six fireplaces and two brick ovens, which had been plastered over, have been opened and made operable (although some are now used with wood stoves!).

Living in a 170 year old house one cannot help but contemplate how the original owners lived farming, using oxen, clearing, fields, building stone walls, cutting lumber and firewood by hand. House-keeping was probably not as much of a burden as it may seem now, as the Tafts must have thought their house to be very modern and convenient in 1812.

CCS - NFS, Jr

### BRUCE A. CROMACK

General Carpentry  
Restoration a Speciality

Burrington Road

Tel: 337-4350

### CHARLEMONT TV, INC.

Zenith

Sales & Service

High Street, Charlemont

Tel: 339-6685

K.R. Jeweler

17 Chapman Street • Greenfield, Ma. 01301

Fine Selection of Watches & Jewelry  
Watch & Jewelry Repair



## FROM OUR REPRESENTATIVE

- Special to the HEATH HERALD -

By Jay Healy, State Representative

For the past week and a half the House of Representatives have been trying to formulate (and pass) the State budget for fiscal year 1982. At this writing, however, everything is quite literally up in the air. The House is in recess until June 4 while the House Ways and Means Committee reassesses their budget proposal.

The Committee's budget, in my opinion, does not address the fiscal realities of federal cutbacks to the states and the effects of Proposition 2½ on the towns and cities. Nor does it lay out sufficient monies for local aid or such necessary and underfinanced human services as Aid to Families with Dependent Children, General Relief and Fuel Assistance.

Fiscal realities require a balance between these important services and the people's wish for spending reductions. The Legislature should help local communities deal with the burdens produced by Proposition 2½ and guarantee that the needs of human service recipients are fulfilled without imposing new taxes.

I believe that the House must reorder their priorities and take a hard look at the State's own expenditures, especially the evergrowing administrative costs. As an example in 1980 the state spent 1.8 million dollars to employ 180 court officers for the 160 member Legislature. Many of these people earn more than the Legislators they serve. I have given my support to the Better Budget which prunes such administrative expenditures allowing for an additional \$320.8 million in local aid and an increase in appropriations for such services as Aid to Families with Dependent Children and full assistance.

Hopefully in the next issue I will be able to report that the House has passed a fiscally responsible, yet humane budget.

## GRAPHIC ARTIST IN HEATH

Richards Steinbock, Heath resident and member of the Volunteer Fire Department and Board of Assessors, is also a freelance graphic artist, working out of his home on Burnt Hill.

Prior to moving to Heath in 1974, Steiny attended Carnegie-Mellon University where he received his BA in Graphic Design, did studio work in Baltimore and San Francisco and lived in Cambridge, Buckland and Ashfield.

Most of his early work consisted of design and layout of Yellow Page ads for New England Telephone. Currently, however, all of his work is generated locally, mainly by word-of-mouth from one client to another.

He is perhaps best known in Heath for his annual Heath Fair T-shirt designs, some of which appeared last year also on postcards at the Fair. He has also designed the seals on the Heath Fire Trucks, and hopes to have seals for the town trucks and police cruiser ready soon.

He has also done work for MassPirg, UMass, Antioch/New England in Keene, Franklin Co. Energy Committee and numerous other local concerns. His work includes small brochures, logo and letterhead design, large 4-color posters, and everything in between.

Recently he completed a redesign of the logo and cartons for East Coast Kefir, a Greenfield company, and the illustrations for a solar greenhouse book for

Doubleday. His work appears regularly in New Roots magazine published in Greenfield.

Along with his freelance work he is currently employed as a media instructor/illustrator at Greenfield Community College.

Steiny plans to work and live in Heath for a long time to come and encourages anyone interested in obtaining quality illustration or design work to give him a call.

## PUTTING OXEN BACK TO WORK

By Carroll B. Stowe

For a number of years I have wished for the courage to have a plowing contest for horses, oxen, and mules. I had attended two events of this nature in New York State.

These events were mostly a fun day. They were not run as a knock-down and drag-out competition. They were purely for the enjoyment of the contestants and the spectators. This was the reason that I wished to do the same, because I very much enjoyed seeing the horses, oxen, and mules at their tasks.

My feeling was that perhaps others would enjoy this type of entertainment without having to buy two tanks of gas to do so.

As all open land is not good for plowing, I had to find some land that was. I chose a field in Colrain as it was good land to plow, free of stone, and near a historic landmark - the Arthur A. Smith covered bridge.

Most people that are acquainted with me know that I am most interested in a return to four-footed power where it is practical. The problem is that a whole generation has gone without the knowledge of the capability of hay and oat fueled power.

I think that I am intelligent enough to reason that a team of horses or oxen can't compete with a 100 horsepower tractor at getting a corn field ready to plant or harvest. But on the other side of the coin, I'd like to see that same piece of iron work in a selective cutting wood lot. It can be done, but the horses or oxen would put it right to shame.

As people who lean towards animal power have told me, they dance to a different drummer.

One man that brought a yoke of cattle to plow told me that he had drawn 160 cords of wood and 90,000 feet of timber, this past winter, with the help of his oxen with a head yoke.

The contest on the 9th of May was a great source of satisfaction for me and others. With a few improvements we felt the event was worth a try again next year and are in search of a host to make this possible.

HOME: 774-2613

OFFICE: 774-3722

774-3635

**LOIS L. BUCHIANE**  
**REAL ESTATE BROKER**

AREA REALTY  
180 FEDERAL STREET  
GREENFIELD, MA. 01301



## SELECTMEN MAKE APPOINTMENTS

By Paul Lively, Chairman  
Heath Board of Selectmen

The Selectmen have made the following appointments for the current year:

Chairman, Selectmen	Paul Lively
Secretary of Selectmen	Edward Calver
Selectmen's Clerk	Catherine Nichols
Chairman, Board of Health	Anne Steinbock
Veterans Representative	Edward Calver
Dump Committee Rep.	Paul Lively
	Anne Steinbock
F.C. Regional Trans.Auth.Rep.	Anne Steinbock
Chairman, Liquor Commission	Edward Calver
Road Superintendent	Raymond Galipo
Fire Chief	Earl Gleason
Police Chief	Lorin Gowdy
Forest Fire Warden	Earl Gleason
Civil Defense Director	Richard Giard
Animal Inspector	Paul Lively
Reporter of Diseases	Janet Bliss
Veterans Agent	Edward Russell
Zoning Board of Appeals, Mem.	Robert Tripp
Wiring Inspector	John Rossi
Registrars of Voters	Catherine Cromack
	Charles Miller, Alice Woznick
	Catherine Nichols
Constables	Francis Galipo
	Lorin Gowdy, Catherine Cromack
Community Hall Committee	Alli Thane
	Teresa Pettengill, Cleon Peters
	Teresa Peters, Dolores Churchill
Police Officers	Lee Shepherd
	Todd Gerry, Donald Churchill
Town Counsel	Craig Barry
Dog Officer	Michael Smead
Inspector of Gas Piping	Kenneth Henderson
Temporary Police Officers	Judith Stetson
(for Fair)	Dennis Annear, Donald Messer
Arts Lottery Representative	Robert Gruen

On other matters:

Highway Dept. Considerable repair work is being done on highway machinery, some of which has to do with safety. The grader has had steering and brake problems corrected at a cost of approximately \$1300. The loader had a problem with water getting into the engine oil. It is presently in the shop being repaired. Due to the number of hours on that engine we decided to have it overhauled while it is out. There are other points that may need attention on the loader and the estimated cost, if all the work is needed and done, is about \$6000.

At the request of the Highway Dept. an article will appear on the warrant of the special town meeting to be held on June 29th to see if the town will provide medical insurance for Highway employees with the town paying all or part of the cost. I personally oppose granting this benefit at this time as we have already granted them a seven percent pay raise for the coming fiscal year.

Town Office. We have received bids (8) for an office paper copier. Catherine Nichols is preparing a comparative chart of the competing machines. We will use this information in making a selection at our next meeting.

### SUMMER STUDIO ART CLASSES

Drawing, painting, designing, sketching outdoors  
Children (age 8-12) Monday 3:00-4:00 \$3.00 a class  
Teens & Adults Tuesdays 6:00-9:00 \$5.00 a class  
Marlene Housner Call 337-4047

## TOWN MEETING 1981

The town elections on May 5 brought out a record 156 voters. The two contested posts were close with Edward Calver as a write-in candidate winning the Selectmen's position over nominee David Howland by 16 votes. Calver also ran successfully for the post of Moderator. In the only other contest Bruce Warner won a position on the Finance Committee over Bruce Cromack by 12 votes. Other unopposed candidates were elected as follows: Richard Giard, Assessor; Richard Housner, Susan Gruen, Amy Barry as School Committee members; John Holdsworth, Library Trustee; Newland Smith, Auditor.

At the Town Meeting in the evening, Earl Gleason was nominated and elected to a 5-year term on the Planning Board.

The omnibus budget for Fiscal 1982 totaling \$413,211 was voted with only minor discussion. This budget included a sizeable increase for schools and the full amount requested by the Mohawk School Committee.

The rather long meeting, sitting in hard uncomfortable chairs, came alive when the special article requesting \$10,475.04 for the Assessors to re-value the town came up. After much discussion, it was passed with an amendment indicating this would be the maximum amount to be spent and that the revaluation would be completed to meet state certification requirements. The ethics of a town contracting assessing work with elected officials was also to be resolved.

Another article requesting easement on town property near the Community Hall for the installation of Telephone Company equipment was voted with an amendment by Paul Lively that Heath residents be granted toll-free calls to Greenfield, and also that the installation meet the Zoning Bylaws.

A request for \$1075 for the Franklin County waste disposal project was voted down on the basis that it would be included in the County assessment on the town.

It was also voted to transfer \$3200 from Revenue Sharing funds to purchase an office copying machine. This is to be made available in the Town Clerk's office for use by local residents.

It was pointed out at the meeting that the overall budget met the new Proposition 2½ requirements only because of the amount of free cash available this year as a result of the current town audit.



**RALPH E. BLACKMER**  
Insurance Service

Gordon E. Taylor

Joseph J. Judd

Shelburne Falls

TEL. 625-6527



## RECOLLECTIONS OF HEATH SCHOOLS

By Ruth Churchill

(This article was published in the Greenfield Recorder June 21, 1968 and is presented here in condensed form. It seems appropriate at this time in view of the public concern for the high cost of public education.)

With the closing of the Branch School today, the final chapter has been written concerning schools in Heath. Beginning in September, Kindergarten through Grade 6 will be tuitioned to Rowe Elementary School, while students in upper grades will attend Mohawk Trail Regional School.

The history of its schools dates back to the early days of incorporation of the town in 1785. In that year 15 pounds were voted for keeping the school. In 1804 there were six school districts and school money was divided in this manner: South, East and West received \$55.25; Center \$61.25; Mr. Allen's district, \$10; and North, \$ 28.

The following year, 1805, Branch School was built at a cost of \$174 by Nathaniel Maynard. This schoolhouse stood down the road from the present structure between Mrs. Frank Gleason's and Ernest Thane's. A one room Branch School was built at the present site in 1863.

It is interesting to note that this town with a population of 300 today once boasted 1200 inhabitants with nine school districts. However, people began migrating westward and one after the other these school houses were abandoned.

With the construction of new highways, a centralization was begun. In 1935, the Superintendent recommended development of a central school for the North District at the location of the Branch School with two teachers in charge. However, it was not until 1938, at a special town meeting that an extension to the Branch School was voted, thus providing two rooms.

Then in 1950 \$22,000 was voted for another addition, giving three rooms. By 1960 it was evident that the kitchen facilities were inadequate, so an addition was built to improve this condition.

Some interesting reflections have been made with the realization that this last of the nine schools is to be closed. The maple trees on the school grounds were set out 92 years ago - the day Arthur Sumner was born. And someone stated that three generations of Gleasons helped with the building of the present structure.

Although Heath is abandoning its last school house, it will continue to educate its children, as it has done in the past, in a manner befitting today's requirements and preparation for life.

## HISTORICAL SOCIETY NEWS

By John Read

The members of our Society really responded to the appeal for donations to meet the cost of restoring the old flag of the Heath Rifle Company. At this writing, we have exceeded the estimated cost of \$600 by \$20.

The President sincerely thanks all of the contributors for recognizing the importance of this project and helping make it such a success. The enthusiastic efforts of the Chairman of the Development Committee, David Howland, in attaining our goal are greatly appreciated. We also want to thank Caroline and Newland Smith who initiated the project and did the leg work with the assistance of Amy Barry.

It is expected that the flag will be on hand in time to be dedicated at the annual meeting tentatively set for August 8. Come and see it.

The Curator, Amy Barry, has several projects underway for the Society. During the winter, Mrs. Barry worked on compiling an index for Dr. Calver's History of Heath, with the idea of having this index published. She has also been working on genealogies of Heath families based on Dr. Calver's book and various other sources.

With warmer weather here, it is time to clean up the museums and to set up new exhibits. There are still many documents, letters, and books that need to be catalogued, and this year Mrs. Barry plans to work on cleaning and preserving our valuable textile collection.

Volunteers to help with these projects are always welcome. Expertise is not nearly as important as enthusiasm and affection for old things. This summer Mrs. Barry will be working at the Old Town House museum every Wednesday afternoon from 2 - 4 PM beginning July 8. Anyone who is interested in working at the museums or who wants to see our collection is welcome to stop by. The museums can also be opened by special arrangement with Mrs. Barry.

If you are interested in Heath's history and would enjoy seeing tangible evidence of its past inhabitants, lifestyle, and industries, we urge you to visit our museums or to become a member. Contact Newland Smith, Chairman of the Membership Committee at 337-4900.

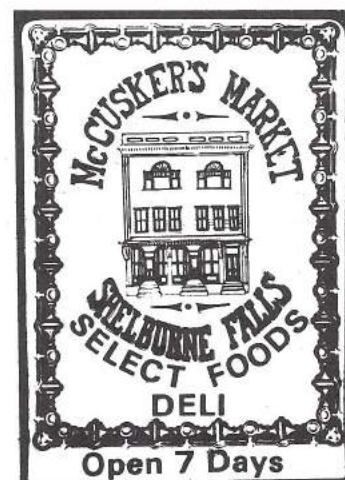
**LARRY'S**  
*of Shelburne Falls*

CLOTHING

FOOTWEAR

**A.L. AVERY & SON**  
GENERAL STORE

Charlemont • 339-4915





## BOY SCOUT ACTIVITIES

By Eric Sumner, Senior Patrol Leader

The Boy Scouts of Troop 86 have been taking advantage of the warm spring weather. About a month ago, the troop went on its first camping trip of the season, spending the weekend near the Thane farm along the Branch Brook. During the course of the weekend, we practiced our pioneering skills with the building of several in-camp facilities, including a fire table, wash table, and a good start on a bridge. Although it was a bit damp, everyone had fun.

On Memorial Day, the troop paid tribute to the U.S. veterans by marching in the parade in Charlemont. Here, scouts decorated the memorial crosses at the Town Hall with wreaths.

Because of the good weather, for the past several weeks we've had our Tuesday meeting at a campsite located on the Clessons Brook in Charlemont. We've been busy making plans for yet another campout to be held on the 12th of June back at the Thanes'. On this outing, we're hoping to improve the dam in the brook in order to make a permanent swimming hole.

We extend our thanks to the Thanes for their generosity in allowing us to use their woods.

We ask that any sightings of the North American Snipe be reported as soon as possible to one of the scouts. Thank you.

### YOUTH GROUP TO PRESENT PLAY

On Friday and Saturday, June 19 and 20 at 8 PM the Heath Youth Group will present "The Belle of Amherst", a two-act play based on the life of Emily Dickinson and written by William Luce. The program is produced by the Youth Group, directed by Matthew Denouden, and coordinated by Tena Smith. Emily Dickinson will be portrayed by Jennifer Fogel-Songer Corey. John Bross of Colrain has designed the set and lighting.

For those unfamiliar with the poet's life and writings "The Belle of Amherst" presents an enchanting introduction to a remarkable artist.

The production will be staged at the Greenfield High School Auditorium. Adult tickets are \$3.50, students and senior citizens are \$2.50. Tickets will be available at the door.

### YOUTH BASEBALL

The Youth Baseball teams under the able leadership of coaches Dennis Williams and R. Boutwell have scored the following; A team - 6 wins, 3 losses; B team - 3 wins, 4 losses.

The players chosen for the All Star team for this season are: A team - Mike Cascone, Ken Cole, Tim Jodoin, Sherry Lenois, Floyd Smith, Jim Vivier, and alternate, Lenny Cascone; B team - Craig Brown, Kenny Lenois, and Arlo Seaver.

**KAYEN'S** *Jewelers*  
220 MAIN STREET GREENFIELD, MASS.  
01301

## SCHOOL COMMITTEE NEWS

By the Heath School Committee

The new Heath School Committee met on May 11 and the organization for the year is: Richard Housner, Chairperson, Mohawk Rep.; Amy Barry, Vicechairperson, Rowe Rep.; Susan Gruen, Secretary, Rowe Rep. Regular monthly meetings of the Committee will be on the second Monday of each month at 7:30 PM at Sawyer Hall. The Mohawk Committee meetings are on the second Wednesday of each month. The public is encouraged to attend.

The selection committee for the Rowe School principal has almost completed its work. Intensive personal interviews of eight candidates were concluded in early May and several members of the Selection Committee visited the four final candidates at their respective schools last week. The final decision on the new principal should be made in early June.

During the past several weeks a number of concerned parents from Heath and Rowe held two meetings with the Rowe School Principal and staff to discuss the math and reading programs.

In general all children are taught to read at their own individual pace. Each grade level explores new techniques in reading comprehension. Mrs. Law, Mrs. Rillings and Mr. Gruen addressed the concerns of parents and the reading program.

We left with a good idea of how we as parents could help our children improve their reading abilities. By setting a good example, enjoying reading material, making family trips to our local library, reading to our children, and having them read to their brothers and sisters, we encourage good habits. Each child should be encouraged to give expression to what he/she has read. Reading should be a habit and a pleasure.

Hopefully these educational programs for parents will continue in the fall, helping us as parents to help our children.

The 1982 Mohawk Regional School budget appropriation is not yet resolved. We are faced with a potential for reduced revenues from Charlemont, Ashfield, and Plainfield. Additional financial aid from the Commonwealth is another unknown. A nonprofit corporation is being developed to raise money through private donations to offset deficits. Economic matters have dominated the Mohawk Committee's time and energy since the passage of Proposition 2½.

An environment which fosters learning and individual growth with an enrollment of no more than eighty students in grades seven through twelve.

Applications now being accepted for the 1981-82 school year

**The Academy at Charlemont**

Box 165, Charlemont, MA 01339  
Telephone (413) 339-4332



## VISITING HOME (POEM)

By Stephen Thane

I tried to find the real thing,  
But everywhere I went  
I heard "We don't have that here, Son",  
So further I was sent.

I looked in the obvious places,  
Dashing up hill and down,  
But I was running out of aces,  
And still none could be found.

Then suddenly I remembered  
On this beautiful Saturday,  
That when I was a member  
This was the Heath-en Way.

(Steven now lives in Cortland, N.Y. with his wife  
Nancy Litchfield Thane and daughter Kristen)

## CALENDAR OF EVENTS

June 13	5:30PM	Ham Supper, Community Hall
June 19-20	8:00PM	"Belle of Amherst" by Heath Youth Group at Greenfield High School
June 27	10AM	4-H Rabbit Show, Fairgrounds
June 29	8PM	SPECIAL TOWN MEETING at Community Hall
July 7	8PM	Agricultural Society Meeting, Fairgrounds
July 8	2-4PM	Historical Society Museums open. Volunteer help welcome. (also each following Wednesday) Rowe Old Home Day
July 11		
July 12	9:30AM	Joint Church Service, Pelham Lake
July 25		Church Auction, Fairgrounds
July 29		Ladies Aid Fair
July 29	5:30PM	Public Supper, Community Hall
August 4	8PM	Agricultural Society Meeting, Fairgrounds
August 8	8PM	Heath Historical Society, Annual Meeting, Community Hall
August 14,15,16		HEATH FAIR
August 16	9:30AM	Joint Church Service, Fairgrounds
August 17-21	9-12AM	Vacation Bible School, Rowe.

### VACATION PERIOD FOR TOWN CLERK

The Town Clerk and Treasurer has announced that  
she will be on vacation from July 27 to August 7.  
Her regular hours will be resumed on Monday Aug. 10.

Return Undelivered Copies to:  
P.O. Box 54 Heath, MA 01346

MAIL TO:



U.S.  
POSTAGE

## HEATH PEOPLE IN THE NEWS

Melanie Poisson, the daughter of Jon and Pat Poisson, is a student at the Pioneer School of Gymnastics in Springfield, and recently won a gold medal in gymnastic competition at the school. Melanie, age seven, was the youngest in her group of seven to ten year old students.

Hilma and Thomas Kuzmeskus are on the Dean's list at Toccoa Falls College in Georgia. Thomas is studying for the ministry with the Christian and Missionary Alliance Church. Hilma is the daughter of Clyde and Ruth Churchill.

Charlene Churchill is now working as the Banquet Sales Manager at the Merry Manor Restaurant in South Portland, Maine. Charlene is the daughter of Clyde and Ruth Churchill.

Winston Cromack EW2 is being discharged this month from six years in the U.S. Navy. He has participated in military exercises in the Mediterranean Sea and the North Atlantic aboard the USS Guam.

Mrs. Hannah Burrington attended her 59th class reunion of the Waltham Nurses Training School. She is one of seven of the class of eleven who graduated in 1922 that have attended a reunion for the past 20 years.

## GIRL SCOUT ACTIVITIES

Mrs. Chris Tower has resigned as our local Girl Scout leader. Anyone who is interested in taking on this interesting and worthwhile position should call Mrs. Tower at 339-4736.

### CLASSIFIED

FRESH WINDS FARM Paul and Marcella Lively & Sons  
Excavating - Loam - Sand - Stone  
Also Horse and Stock Hay, \$1.00 a bale 337-4331

FOR SALE: About 600 ft. 04 wire and 3 poles, \$250.  
Also 2 used TV's and small B&D circular saw, none  
working, all for \$35. Call D.Howland 337-4980.

Additional copies of the HEATH HERALD may be purchased at Peters' Store newsstand.

## Howard Crowningshield

Building & Remodeling

Tel: Heath 337-4406  
P.O. Charlemont, Ma. 01339

## PETERS' GENERAL STORE

**The ONLY Store in Heath**  
ALL YOUR WANTS SUPPLIED  
WHAT WE DON'T CARRY WE GET  
**We Sell Alcoholic Beverages**

\*\*\*  
Satisfaction Guaranteed  
\*\*\*

Raymond and Pamela Galipo Tel: 337-5501