



# HEATH HERALD

## Heath's First Newspaper

\$1.50

Volume 34, Number 2

June/July 2012

### Heath Elementary School Sixth Grade Class of 2012



*Photographed by Eileen Tougas*

*Front row; Matthew Brooks, Oliver Diamond, , Chandler Platek, Matthew Lively, Oshen Ramirez.*

*Back row; Eleanora Boyd-Owens, Vega Johnson-Bouchard, Corinne Freeman, Haley Rode.*

*Absent from picture, Payten Herzig-Doherty*

## Heath Herald

**Design and Layout Editor/Photographer**

**Copy Editor**

**Typographer**

**Business Manager**

**Advertising & Circulation**

**Coordinator**

**Technical Advisor**

**Columnists**

Eileen A. Tougas

Jane de Leeuw

Jane de Leeuw

Jan Carr

Jan Carr

Dianne Cerone

Henry Leuchtman

Eric Glazier, Bill Lattrell,

Donald Purington, Claire Rabbitt

### Contributors

Lois Buchaine, Jack Cable, Dianne Cerone,  
Lizz Davin, Finance Committee, Heath Historical Society,  
Heath Preschool, Heath School Staff & Students,  
Heath Union Church, Robin Jenkins, Lyra Johnson,  
Ruth Johnson, LEC, Pat Leuchtman, Justin Lively,  
Tim Lively, Lorena Loubsky, Amy Love,  
McCutchens, PTP, Art Schwenger, Selectboard,  
Kathy Sprague, Hilma Sumner, Eileen Tougas,  
Jodi Walsh.

The Heath Herald is a nonprofit newspaper staffed by volunteers and published six times a year. Donations are tax deductible and are greatly appreciated.

**THE HERALD DEADLINE FOR THE August/September 2012 issue is July 10, 2012. All articles are the property of the Heath Herald unless accompanied by a self-addressed, stamped envelope. Call (413) 337-8594 or E-mail Jane at [jdeleeeu@crocker.com](mailto:jdeleeeu@crocker.com).**

**SUBSCRIPTION RATE** ~ One Year: \$8.00 (payable in advance by check or money order).

**ADVERTISING RATES** ~ Display ads: \$5.00 per column inch. Contact Jan Carr at (413) 337-5747.

**CLASSIFIED ADS** ~ Free.

**Send all correspondence to:**

**Heath Herald**

**P.O. Box 54, Heath, MA 01346-0054**

### SUBSCRIBE TODAY! HEATH HERALD

For only \$8.00 a year, 6 issues of the Heath Herald will be delivered to your home.

Name \_\_\_\_\_

Address \_\_\_\_\_

- Keep abreast of local happenings
- Give it as a gift to friends or family
- Support your local paper

The Heath Herald, P.O. Box 54, Heath, MA 01346

### Heath Union Church News

A full house of dishwasher contributors enjoyed a no charge "appreciation dinner" that was prepared on April 21 by Esther Gallup and Jeanette Crowningshield. Bingo was the activity for Family Night on May 20. Coming up on June 24 at 6:00 p.m., we will host Joe Canuel of the Gideons who will entertain us with Gospel songs. Our summer barbecue is scheduled for July 16 at noon at the home of Mike and Crystal Smith with a rain date set for the 22<sup>nd</sup>.

Though it is taking longer than we thought, we expect our Johnson organ to be installed this summer and hope for a dedication ceremony in the fall.

Everyone is welcome to attend our services and activities.

Adult Sunday School	9:00 a.m.
Sunday Worship	10:00 a.m.
Bible Study and Prayers	Thursdays, 6:00 p.m.
Pastor's Hours	Thursdays, 4:00 to 6:00 p.m.

Church phone: 337-5367; Pastor's phone: (413) 648-9077

The Deacons	
Richard Gallup	337-5367
Ruth Johnson	337-4367
Walt Gleason	337-4479
Alli Thane-Stetson	337-4852

~ The Deacons

## HEATH COMMUNITY HALL SUMMER CRAFT FAIR

SATURDAY, JULY 28, 2012  
10:00 A.M. TO 3:00 P.M.

Crafts, Dolls, Handmade Rugs,  
Ladies Aid Bake Sale

**Morning coffee and luncheon**  
**10:30 a.m. to 1:30 p.m.**  
**Senior Center**

## “Ridge to Reef”



In our vulnerable culture, understandably wanting to stabilize its anxiety, we ignore or deny global warming's shake-up. This, despite climate change's active and current effect on land, air, and sea. We in the older generation looked elsewhere as these changes unfolded, unfortunately. Even those of us who read the science tend to think that changes are coming later. But they are NOW!

It is up to the next generation to challenge, learn, and cope with them.

On April 28, Brooks McCutchen, Janis Steele, and their sons Connor, Rowan,\* and Gavin set sail from Salem bound for the Caribbean and the coral reefs there. They took two years of retrofitting and equipping their boat, **Research Vessel Llyr**, funded so far by heavy debt on their home. Their goal has two aspects:

-one is to put their children with eyes wide open, their “next” generation, in the middle of current ocean warming that has already bleached 80% of Caribbean reefs;

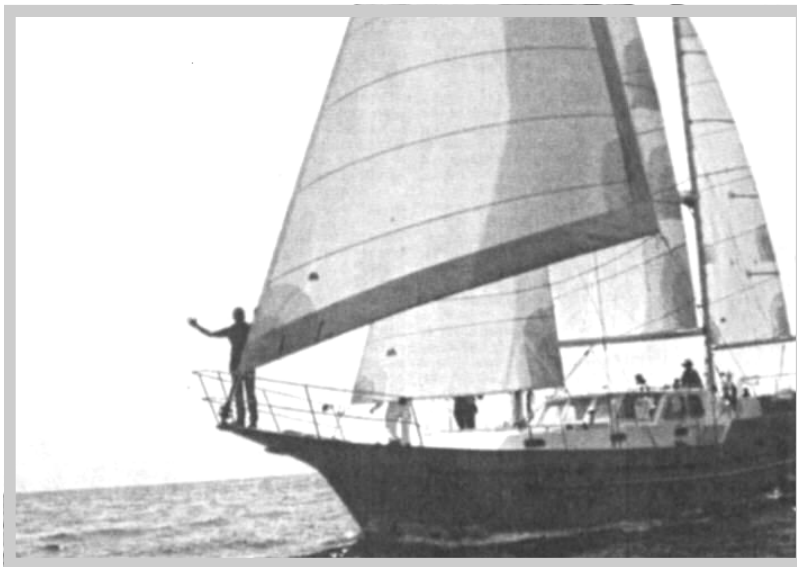
-the other is to furnish a platform for scientists in several sites to document the effect of ocean's heating and acidification on specific reefs, starting with those in the Dominican Republic and Haiti, and then moving on to Panama.

They call the project “citizen research” because they are self-trained in oceanography, with their doctorates in psychoanalysis and anthropology. But they are all expert divers, their boat can accommodate other divers with scuba support systems and recording facilities, and they can make the boat available to others for six months of the year for this kind of study.

The other six months will be expended on their farm **Berkshire Sweet Gold Maple and Marine**, generating funds to survive and pursue further ocean expeditions. Hence the name of the overall effort is “Ridge to Reef.” They find analogous degradation of environs both on the ridge, where their maple trees suffer too warm winters to stifle warmed insects, and on the coral reefs, the sea's nurseries, where heat and acidification cause the coral animals to eject the flora that inhabit them, thus dying themselves.

They venture on a *very* small capital base. They welcome sponsors, donors, grant suggestions. And they hope to excite you and others to participate by choosing something relevant to the issues focused in the Ridge to Reef expedition. At the very least, keep up with their blog found on [www.berkshiresweetgold.com](http://www.berkshiresweetgold.com). They want to have their children experience and witness first hand what is happening right now in the sea as well as on the land. You may want to challenge your offspring or grandchildren to get involved in some way also.

As grandparents, we are abashed by what we missed, by their vision, by the risks they take to signal the risks all of us face. And we are encouraged by their daring. How about you?



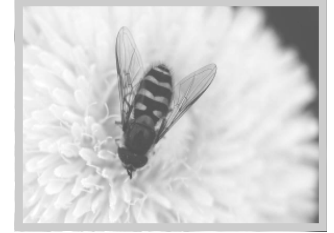
~ Martha and Leighton McCutchen

*\* Rowan suffered a broken collarbone the day before they sailed. He is recuperating nicely here and will rejoin his family the end of this month with Janis. She returns briefly to operate a craft show in New York.*



Wild Ramblings

## The Buzz on Flowers and Bees



By Bill Lattrell

The sky is blue, blue, blue and carrying big white cotton clouds that are reminiscent of a giant feather bed. The leaves on the sugar maples are in full form while those on the white ash are just breaking bud. Still the surrounding countryside is emerald green and I just can't help but take deep breaths of this spring air that seems to bring life into every cell of my body. Birds sing everywhere, mostly in defense of their territories, but the chorus of the many species is a symphony indeed.

I am standing by an apple tree in our orchard. It is a family orchard that has a half a dozen apple trees, a few pear trees, a cherry tree, and twenty highbush blueberry shrubs. The blueberries are to my left and just entering full blossom and this brandywine apple in front of me is in full flower. There are perhaps fifty painted lady butterflies that have been attracted to the nectar, now in full



swing, on the apple blossoms. They dance from pink blossom to blossom, staying long enough to collect this sweet juice and unintentionally carrying pollen that will help to produce the apple fruit. This yearly ritual is a perfect example of symbiosis between a plant and animal. The butterfly needs the nectar for survival; the apple needs the pollination for future generations. There was a time before flowering plants when spore-producing plants dominated the plant world. Some ferns, horsetails, and club moss plants were huge. These plants, known as allies, could reach tree-size; some being hundreds of feet tall. During the Carboniferous era, some 370 million years ago, these plants were the primary botanical residents on a very volatile Earth. This volatility helped to form their reproductive system that utilized spores that fell onto the soil. These spores grew into non-chlorophyllic plants that developed beneath ground level. It was these non-chlorophyllic plants that bred and formed the green vascular plant that rooted itself in the earth and grew into this warm, even hot, carbon-filled atmosphere. It is the remains of these plants from which we get our crude oil and gas reserves today. The advantage these plants had was the earthen buffer during their breeding cycle. Subterranean development

of each new plant was a decided advantage in an era of volcanoes, earthquakes, and a heavy gaseous atmosphere.

About a hundred and fifty million years later flowering plants appeared. The atmosphere was much more settled; insects, mammals, and birds abounded, and dinosaurs ruled but completely disappeared in the next five, or so, million years. The earth, as we know it today, had begun. Codependent relationships between plants and animals continued to develop, ever so slowly, and the blueprint was set for what we have today.

All of these strange and overwhelming facts run through my head as I stare at the apple blossoms. I am witnessing nothing less than a miracle, and I am awed that what seems so simple is the result of the most complicated series of events imaginable. The wisdom of our planet is found in its sheer ability to change with time, almost endless time, considering our planet is four-and-a-half-billion years old.

One recent change is the tremendous decline in honeybees. These imported bees were our primary pollinators for the last one hundred and fifty years but as I stand here I can see a few bumblebees, a few mason bees, and a few miner bees along with the painted lady butterfly working the nectar in the apple blossoms.

We are likely all aware that there has been a worldwide bee colony collapse when it comes to the honeybee populations. It is a matter of grave concern for those in agriculture. While it is true that many crops are wind-pollinated, for instance, almost everything in the grass family like corn, it is also true that many of our flowering crops are dependent on natural insect pollinators. Bee colony-collapse has been going on for about ten years. It has been the subject of serious study. Some of the planet's best ecologists and entomologists have been dedicating their careers to solving this mystery and we still do not know the cause. One major theory suggests that honeybees have lost their genetic diversity. This may have been caused by large bee breeders that took over the markets and lessened the genetic stock. Another theory blames the collapse on pesticides and herbicides. One study within the pesticide theory suggests that bees are getting lost and not returning to

(*"The Buzz on Flowers and Bees"* continued on page 5)

## Happy Trails for Over 70 Years

I grew up with Roy Rogers as my hero. I saw him at the Eastern State Exposition in the 50s and had a personal visit with him in Waterbury, Connecticut, in the 80s. Even though he died in 1998, the Rose Bowl Parade featured him on January 2, 2012, in honor of his 100th birthday.

Don and Marilyn Conlan of Pasadena, California, are longtime summer residents of Heath. Don, a good friend of mine, arranged for my sister Joyce and me to attend the parade and stay with them at their home in South Pasadena, and Marilyn got us tickets.



I flew to my sister's home in Hurricane, Utah, and then we drove to the Conlans. The weather was great, and Marilyn had reserved seats in the grandstand, less than 35 feet from the floats. Seeing these floats made entirely of flowers up close was unbelievable. Roy Rogers's float was 75 feet long and 35 feet high with his horse Trigger and his German shepherd Bullet plus Roy's son and grandson with their band plus Roy's daughters. The float followed 100 riders on palominos carrying American flags.

I was waving a denim baseball cap embossed with the RFD-TV logo, sponsor of the float and riders. The riders saw the cap and gave me the "thumbs-up." Then the unbelievable happened. As I waved the hat the float stopped right in front of us and Roy Jr. and son sang "Happy Trails" to us twice. This was a highlight in my sister's and my life. Unbelievable!

A huge thank-you to our gracious hosts, Don and Marilyn Conlan.

Happy Trails,  
~ Jack Cable

(*"The Buzz on Flowers and Bees"* continued from page 4)

their hive because the chemicals somehow impact their homing instincts and leave the bees in a state of confusion. There is no absolute proof of the cause of this terrible malady yet but it is very serious turn of events and should not be taken lightly.

The fact is that for millions of years wild bees did all of the necessary pollination for the natural world. These creatures can do the job for at least some of our crops, unless of course, wild bees become affected by whatever is causing bee collapse as well. New evidence points to this being a very real possibility. In Great Britain scientists have documented a strong decline in bumblebee populations, likely caused by insecticides.

I take a deep breath and look around me. The blossoms, all pink and white, fill the air with a sweet aroma. Wild bees and butterflies fly from flower to flower in pursuit of their nectar. The sky is still blue. The trees are still green. And the birds are still singing.

And at this precise point in time I am happy to appreciate the moment. Life is beautiful.

*The Friends of the Heath  
Free Public Library  
thank all who  
baked and bought  
at the  
Annual Memorial Day  
Weekend Bake Sale.*

**Green Thoughts****How Does a Garden Take Shape?**

By Pat Leuchtman



When I planted my first roses in 1980 I had no vision of what the garden would look like 30 years later. The Rose Walk, and all the other gardens, just seemed to grow (usually grow) like Topsy, without a master plan.

Of course, even without a master plan, things go wrong, opportunities arise, and the plan, such as it might be at any given moment, can take a sharp turn in another direction. Without going into long stories about all the changes in my garden, I can mention a few things that have gone by the wayside, some that have shifted, and some that have taken on a happy and continuing life.

I had never thought of flower gardening in any serious way until I moved to Heath and met Elsa Bakalar. She was such an inspiring gardener that I wanted to have gardens just like hers. And she was willing to help, generously sharing divisions from her garden, and introducing me to Bluestone Perennials, a mail-order catalog that sold small perennial seedlings cheaply. The result was a 90-foot (!) border filled with achillea, plume poppy, feverfew, salvia, campanula, and others I can no longer remember.

This perennial border was never properly maintained. I was working full-time with Elsa at Greenfield Community College, and unlike her I was not willing to get up at 5:00 a.m. to get in a couple of hours of weeding before work. I decided that imitation was not the sincerest form of flattery, and that Elsa did not want imitators anyway. She wanted people to find their own style. The perennial border became history.

When our barn burned down in 1990 I was left with three stone barn foundation walls, perfect for a Sunken Garden. Although our daughter was married in front of the broccoli and squash in June 1996 when the Sunken Garden was a vegetable garden, that garden, too, is history, mostly because the water table shifted and that area is now too wet for spring planting. Here we had an opportunity, a garden made and a garden abandoned.

Then we got the idea (don't ask why) to have eight curving beds in the main lawn for vegetables and flowers. It didn't take long for us to realize just how bad an idea that was. The lawn came back.

The idea of Lawn Beds did not completely die, however. I think it was the spring of 2000 that we dug two large beds in the lawn and started to fill them with trees, shrubs, and a few perennials and annuals. They have grown well and are much admired when guests arrive for the Annual Rose Viewing.

That brings us back to the roses, the first of which were planted in the lawn – and if we even had a reason for choosing that spot it is lost. Soon we decided we would have a

Rose Walk, and I would collect roses. I had fallen in love with the names of old-fashioned, antique roses even before we moved to Heath. And I appreciated that many of those roses were hardy, even if they only had a short bloom period.

We have added roses every year. Even considering that many of them were replacements for roses that died, either after their first winter, or after a few years, the collection has grown. The original Rose Walk was doubled, then roses were added in back of the house, and now we have a Rose Bank where there used to be a fierce tangle of blackberries.

I have all kinds of roses from the alba *Passionate Nymph's Thigh*, the first rose I bought and planted next to the front door, to *Double Red Knockouts* planted on the Rose Bank. In between are rugosas, Explorer roses from Canada, and species roses. But the roses that have a special meaning for me are the Farmgirl roses, roses that have been given to me by neighbors and friends.

Terry Pettengill brought me roses from her mother's house in Maine, and Rachel Sumner gave me roses from her garden. Rachel's Rose is still one of the most magnificent roses in my garden. More recently I have planted roses from Woodslawn Farm in Colrain, including a very energetic rambler and a beautiful big pink rose. I have named all of these for the friend who gave them – making for a very special friendship garden.

Because so many of these roses have a short period of bloom, and because gardens love to be shared, we hold our own version of Garden Open Today on the last Sunday in June. This year the Annual Rose Viewing is on Sunday, June 24, from 1:00 – 4:00 in the afternoon. There will be lemonade and cookies in the shade of the Cottage Ornee. I hope I will see many of you at the End of the Road to enjoy the perfumed Heath breezes on that sunny summer afternoon. Copies of my book of essays, *The Roses at the End of the Road*, will be for sale.

**Letter to the Editors**

Over the past month, rumors have been circulating that Mohawk Estates is trying to "take over" the Town of Heath.

While I'm not sure how or why something so mean-spirited was started, I do know it's an insult and disservice to those of us residents who volunteer our time and efforts to serve on Town boards and committees and who just happen to live in Mohawk Estates. We are not outsiders, we are part of the community, trying to serve our Town in the best ways we can.

Apparently some people just don't get the concept.

~ Eileen Tougas



## **Jerry Ferguson**

Insured - Honest - Reliable - Fully Licensed  
"Spark your imagination"



**ELECTRICIAN &**



**HOME IMPROVEMENT CONTRACTOR**

Phone: 413-337-4317 Fax: 413-339-4839

MA Lic. #21493E MA Reg.#142164 MA Lic. Const.#96880

## **PLANTS FOR PLEASURE**

**"Your Full Service Florist"**

15 Bridge Street

Shelburne Falls, MA 01370

413-625-6066

Carolyn Armstrong & Family



**Osterman**  
Propane

**339 Amherst Rd.  
Sunderland, MA 01375**

**800-287-2492**

**[www.ostermangas.com](http://www.ostermangas.com)**

Joe Kovach  
Joan Schoenhals  
Annie Skillings

### **BIRCH GLEN STABLES**

**WESTERN OR ENGLISH  
RIDING LESSONS**

**\$25.00 Half hour private  
\$40.00 Hour private  
Save with a package  
(Buy 5 get 1 free)**



25 Groll Road, Rowe, MA 01367

Phone: 413-337-4044

E-mail: [birchglenstables@verizon.net](mailto:birchglenstables@verizon.net)

Web site: [www.birchglenstables.com](http://www.birchglenstables.com)

**Matt's Trucking**

**Matt Lively**

**Excavating-Loam-Sand-Fill 337-4331**

**- Screened Loam A Specialty -**

## **Richard A. Sumner**

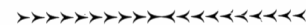
Journeyman Electrician

Mass. License #E22622

30 Royer Rd., Heath, MA 01346

**(413) 339-8357**

## **A.L. AVERY & SON**



**GENERAL STORE**

Charlemont • 339-4915

**Blackmer**  
INSURANCE AGENCY, INC

SINCE 1934

Protection • Selection  
Great Service • Competitive Pricing

**(413) 625-6527**

**1147 Mohawk Trail, Shelburne MA**

## **Richard C. Bishop**

**Elder Law Attorney**

Massachusetts, Florida, Arizona

P.O. Box 121, Shelburne Falls, MA 01370

413-625-2574 / fax 625-8321

40 School St., Suite 5, Greenfield, MA 01302

413-773-1818 / fax 773-1881

# Support Heath Agriculture



## Benson Place

***Wonderfully Wild  
Blueberry Spread***

Made from sustainably grown low bush blueberries, organic cranberries. Lightly sweetened with honey.

***Wonderfully Wild  
Blueberry Juice***

Pressed from 100% sustainably grown low bush blueberries.  
Available at the farm and at many local markets.

Visit our Web-site for the locations.

Come walk this beautiful land!  
182 Flagg Hill Road, Heath, MA 01346  
(413) 337-5340, [www.bensonplace.org](http://www.bensonplace.org)



## Berkshire Sweet Gold Maple Farm Heath, MA

Single-Batch, Single-Crop maple syrups in Italian glass from our family farm. Our small-batch methods produce varied and distinctive maple flavors in every bottle. Come taste something new drawn from maple's long history. Our recipe brochure includes meat, fish, vegetable, and salad dishes. Available at our farm stand on Route 8A, by order, and at fine arts & crafts shows. Farm visits are welcome.

(888) 576-2753 or [BerkshireSweetGold.com](http://BerkshireSweetGold.com)

## Freeman Farm

Grass-fed beef for your freezer.  
Reserve a beeper in the spring.  
Maple syrup, field brush hog mowing,  
and hay also available.

20 Town Farm Road  
337-4766



## Wild Native Blueberries Burnt Hill Farm

Pre-picked 10 lb & 20 lb boxes  
Available late July to mid-August  
Call to order

Blueberry Hotline: 413-337-4454

118 Flagg Hill Rd, Heath, MA



## Raw Milk For Sale Hager Bros. Farm

Farm Fresh High Quality Available by  
order at 413 624-3200 or [hagersmp@mtdata.com](mailto:hagersmp@mtdata.com).

*Order by Sunday p.m. for Monday pickup or Thursday  
p.m. for Friday pickup at:*

11 Merrifield Lane  
Colrain, MA 01340

Also available, a full line of maple products and Cabot  
cheese at farm prices.

## Tripp's Blueberries 64 Taylor Brook Road Heath, MA

Sweet, Wild, Lowbush  
picked, cleaned freezer ready  
10 lb or 20 lb boxes



Call to reserve  
413-337-4964



This section is free to Heath Farmers, and is made possible by the sales of Carroll Stowe's compilation "The Way it is in the Country." Agricultural producers should submit their information to *The Heath Herald*, P.O. Box 54, Heath, MA 01346.



# Heath Fair News

The 95th Annual Heath Fair stands upon the horizon and the Heath Agricultural Society has begun to set the stage for what will undoubtedly be another wonderful year ("wonderful," as it is used here, should be taken to mean that the Fair will be a success inasmuch as the weather will give us something to talk about; Bob Gruen will once again cluck his lunchtime announcement into the loudspeaker; and the Square Dance will draw its usual fun-loving crowd). This year we will enjoy many of the events that you've come to expect: Friday night Fireworks and Square Dance; the Truck, Tractor, Oxen, and Horse Pulls; a terrific lineup of speakers and musicians; and plenty of animals to charm you.

For more information regarding the 95th Annual Heath Fair - and for the latest updates - please visit our Web site at: [www.heathfair.org](http://www.heathfair.org). Here you will find a schedule of events and music, entry forms and information, ticket information, Work Bee information, and so on.

One of the things we are continuing this year is the 3-Day Pass. These passes are in limited quantities and provide entry to the Fair for the entire weekend at a discounted rate. 3-Day Passes can be purchased at Hager's Farm Stand on Rte 2, Avery's Store in Charlemont, and Peter's Store in Heath.

A reminder for those who wish to exhibit their chickens in our new Poultry Barn: Chickens over the age of 16 weeks must be blood-tested in order to be exhibited at the Heath Fair. There is no charge for testing. Call Ed Hagmann at 413-283-5214 to discuss this further (Ed may not be available in July so please plan ahead).

Regarding the business of the Heath Agricultural Society we are beginning our Wednesday Night Work Bees to prepare the Fairgrounds not only for the Fair, but also for the June Draw. There is a long list of projects ranging from mowing and raking to painting and carpentering. Work Bees will be every Wednesday beginning at 6:30 p.m.. Help is profoundly appreciated!! The Heath Ag Society is also seeking volunteers to keep the Fairgrounds mowed during the summer. The cost of gas will be compensated. There will be several Saturday Work Bees and those will be listed on our Web site so please check in for those dates.

With the Fair approaching, volunteerism becomes an increasingly important subject. If you have not volunteered at the Fair before, then please consider doing so. Commitments can range between one and three hours and it is a terrific way to meet people while contributing. If you have volunteered before then I do hope that you will do so once again for the Fair would not be possible without the skilled and trusted help that is offered to us every year. Any interested volunteers may contact me directly at: [justin@thelivelyheathan.com](mailto:justin@thelivelyheathan.com).

And incidentally, we are still searching for a Superintendent of Parking. This position is not glorious but it is critical to the success of the Fair. Please consider the following advertisement: In 1913, only a few years before the Heath Fair came to be, Ernest Shackleton advertised for his adventure to the Antarctic. It read:

"Men Wanted for hazardous journey, small wages, bitter cold, long months of complete darkness, constant danger, safe return doubtful, honor and recognition in case of success."

For the sake of the following comparison, let's ignore the story of Shackleton's adventure...the Heath Agricultural Society is looking for a Superintendent of Car Parking:

Volunteer Wanted for 3-Day Journey, no pay, rain likely,  
long days of sunny flag waving, constant vigilance necessary, exhaustion possible,  
and certainly: honor and recognition in your inevitable success.

Anyone interested in this esteemed position should contact me directly. I will work closely with you to ease your introduction into this position.

We'll see you soon.  
Thank You  
Justin Lively, President



By Eric Glazier, principal

The 2011-2012 school year is coming to a close and what a year it was! I was so graciously welcomed into the Heath community and I'm very excited about next year. I am very pleased with the work that our students, staff, and parents achieved this year. We have the hardest working students and the most dedicated parents and staff in all of the West County.

We have two staff members retiring this year. Julie McCarthy, our school psychologist, is retiring after many years of service to the Mohawk Trail System.

Julie has forged many strong partnerships with students and families in this community and her presence in Heath will be truly missed!

On behalf of the entire Heath community, thank you, Julie, and best wishes for many, many happy and healthy years in retirement.

Deb Porter will also be retiring at the end of September on her birthday. Deb has been an integral part of the Heath Elementary School for the past 16 years. As a Heath resident, Deb can also be seen at many town activities. Deb has held many roles in our school from Title I teacher, to classroom teacher, and teacher mentor. In addition to her role as a classroom teacher, Deb has planned so many wonderful enrichment activities over the years. You can often find Deb leading a hike in the North Woods or planning a literacy night for dozens of students and their families.

Deb is an accomplished author and has worked for the Northeast Foundation for Children...She literally wrote the book on Responsive Classroom, a tool which educators around the country use daily. We will greatly miss Deb's contributions and wealth of knowledge that she has to share. Deb and her husband, John Henry, are planning to travel and spend more time with their grandchild.

We thank you, Deb, and wish you the best of luck in the future. Something tells me that Deb will still be an involved entity in the Heath Elementary School for many years to come.

Our 6<sup>th</sup> grade students successfully raised nearly \$4,000 for their weeklong trip to Nature's Classroom. The students traveled to Yarmouth Port during the week of May 21. Lillian Whitsett, the classroom teacher, and I chaperoned the trip. We departed Heath at 6:00 a.m. on Monday morning and arrived before noon on the Cape. Our students participated in some amazing and fun activities during the week including a whale watch off the coast of Provincetown. The students made memories that they will carry with them for many years.

Our students in grades 3-6 successfully completed their MCAS testing in May. We are so proud of the students for their hard work and dedication. They were focused and put forth their best effort. The MCAS scores will be returned to us sometime in the late summer early fall. Our staff will begin to review the ELA, Math, and Science MCAS data in September.

We will be holding the Heath Elementary School 6<sup>th</sup> grade graduation on June 15 in our Open Space. This year's graduates are: Eleanora Boyd-Owens, Matthew Brooks, Oliver Diamond, Corinne Freeman, Payten Herzig Doherty, Vega Johnson-Bouchard, Matthew Lively, Chandler Platek, Oshen Ramirez, and Haley Rode. Good luck to all of our graduates as they head off to 7<sup>th</sup> grade. The transition from elementary to middle school can be difficult for some, but these are all capable young men and women and they should all be proud of their accomplishments!

We have had a busy May and June that included a band concert, a strings concert, a 5<sup>th</sup> grade colonial fair, an art show, school grounds clean-up day, a Memorial Day presentation, a volunteer brunch, Field Day, Taste of the World, baseball season, and various educational field trips. Our students work so hard all year long on academics and it's nice to recognize their extracurricular activities as well.

I am excited to announce that we have been given the 'green-light' to plan a full-day preschool in Heath. This year we offered three half days and starting in September we will be offering three full days of preschool. If you have a three- or four-year- old child and are interested in joining our preschool, please call us at the school for a visit.

## Heath Parent Teacher Partnership Highlights

We are coming to the close of our year, but are already looking ahead to planning for the Heath Fair and our fall artisan catalog project. If you're interested in helping with these fun and vital endeavors, please call Lorena (624-3842).

It has been another stellar experience for us working with families and community members to offer enriching programs and support for the work of our dedicated staff. Some of the things our funds supported this year: No-String Marionette's performance of the J.R.R. Tolkien's *The Hobbit*; time with naturalist Ted Watt; publication, with support from a grant from Heath Cultural Council, of the student literary and art journal *WINK*. We helped staff purchase a needed ice-machine for the nurse, a camera for the PK-K classroom, and supported a field trip, and more.

**A special Thank-You! to Lyra Johnson** for her many years of love and service to all the kids at Heath ~ we look forward to seeing you again soon when Jupiter comes to Heath School On behalf of the kids, families, and staff, it has been a privilege to work with you and experience your creativity and bright spirit.

On that note, our **SUMMER READING** program is kicking off soon. Sign up at the library with Don and Lyra for the reading program and craft series. *Save a copy of your reading logs for a special appreciation gift at our fall open house!*

## Preschool News:

**The Heath Preschool will be offering free full-day preschool in the fall, Mondays through Wednesdays from 8:45 a.m.-3:15 p.m.** Students will be part of a mixed-age PK-K classroom. Look for an open house announcement soon and don't hesitate to call principal, Eric Glazier, with any questions or to schedule a visit any time.

## Local Education Council (LEC) Update

Heath School will be turning 16 (a quintessential teenager) in the fall!!! So many incredible community volunteers and parents came together with vision and determination and created something of lasting beauty and purpose. It is a gift that continues to thrive, fulfill, and change the lives of our children and the broader community. Sixteen years on, it seems like one way to honor the school and its role in Heath would be to invite people together – teachers, staff, parents, community members – to re-vision and reflect as we look to the fall and the years ahead.

Our school was founded on the precept of being *community-based*. To be community- or place-based means anchoring the curriculum in the local heritage, culture, social and natural environments of our community. As a model, it emphasizes service and strengthening interrelationships with community members and local organizations. Coming together as a group to envision ways our school can evolve and support this vision is integral to providing the exceptional education we want for our kids *and* in visioning a creative, sustainable environmental, social and economic future for the Town of Heath.

If you are interested in joining the conversation, we will be meeting in late June or early July with our Local Education Council, staff, Ted Watt, our phenomenally gifted naturalist, and *you!* to look both at long-range vision and fall planning that focuses on ways of retaining our focus on the local natural, historical, and cultural environment in a project-based interdisciplinary, multiage medium. Please e-mail Lorena: [wildlor@mail.com](mailto:wildlor@mail.com) if you would like to attend this meeting (tentatively set for the third week in June while the staff is still on campus) or come to a future LEC meeting - your input is always welcome!

~ Lorena Loubsky



*Friends of the  
Heath School Library  
Library*

**The Friends of the  
Heath School Library  
thank all who ate breakfast  
at the Annual Town Meeting  
and thereby donated to the  
School Library.**

## Heath School Memorial Day Ceremony

The Heath School fifth grade class conducted the Memorial Day Ceremony which was held at the school this year due to wet weather. Students were dressed in blue pants, white shirts, and a red tie. All marched in holding flags, and stood at attention while fellow classmates read Lincoln's *Gettysburg Address*, the WWI poem, *In Flanders Field*, and a brief history of Memorial Day. The band played, and we all sang "You're a Grand Old Flag." Taps were played by veteran John Henry, followed by an echo played on the violin by Timmy Burnes. Heath Veterans Dennis Peters and Ken Gilbert were present for the ceremony and later accompanied the fifth graders to the Center Cemetery to decorate the graves of veterans with new flags.

~ Robin Jenkins  
Director



*Heath Fifth Graders: Bryan, Charles, Nathaniel, Max, and Geannie.*



*Heath School Band – L-R holding flags Adam Loubsky-Lonergan, Izzy Brenizer.*

*Photographs by Amy Love*



# Mohawk 2012 Graduates



**Brittney Renee Allen**, the daughter of Gerry and Rebecca Allen, plans to attend GCC in the fall concentrating on general studies for the moment, but in this last year she has also developed an interest in working with students who have disabilities. She also hopes to travel once school is out.

In her last year at Mohawk, Brittney enjoyed working as a teacher assistant in the Life Skills / Vocational Program. Here she helped in the program's Java-112, a coffee shop run by the students of the program. Her supervising teacher described Brittney as a very reliable asset who had a genuine innate ability to work with students with disabilities.

Brittney will always think fondly on the friendships she has developed over her years here at Mohawk.

**John Edward Muenkel**, the son of Ed and Lisa Muenkel, plans to take some time off to research possible areas of interest and to work and save money in the hopes of then starting at GCC.

In his years at Mohawk, John enjoyed participating in track and he likes to run the roads of Heath.

John's favorite class was Personal Finance because of its real life application that he sees as invaluable; he even wished he could have kept the textbook for future reference.

When thinking back on his time at Mohawk, John will fondly remember the Booster Week activities in which he greatly enjoyed participating.



**Kelsey Elizabeth Rode**, the daughter of Greg and Barbara Rode, at present hopes to pursue a career in education starting in the fall at GCC and possibly transferring to Siena College in New York.

In her years at Mohawk, Kelsey has been very active in sports playing four years of soccer and indoor track, three years of outdoor track, and one year of lacrosse. She was a member of the Varsity M.

Kelsey has been very active in student government in her years at Mohawk, and presently she is president of the Student Council and class secretary. She is member of National Honor Society and the Key Club, and is a Peer Mentor.

Her favorite classes were Humanities and AP Literature. She says she will fondly miss her participation in the "Mohawk Best Dance Crew" during Booster Week of her junior year.

# Franklin County Technical School

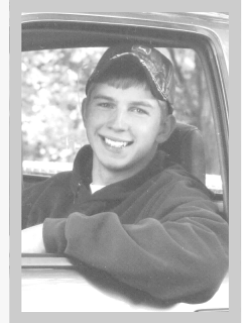


**Jake Archambault**, son of Ryan and Trish Archambault, was a member of the 2012 graduating class of the Franklin County Technical School, and of the Electricity Program during his years there.

He plans to continue work in the field.

**Kenneth Griswold**, son of Heidi and Kelly Griswold, has been in the machine technology program at Franklin County Technical School. His professionalism and work ethic have earned him a cooperative education placement at Valley Steel Stamp, a machine shop in Greenfield, where he is employed as a starting CNC programmer. In this position, Kenny is producing a variety of sophisticated parts for the United States military and aerospace industries. He has demonstrated his commitment to academic classes by consistently enrolling in the highest level of classes available to him. Kenny has introduced new computer-aided design software to the school's CAD-CAM program so as to better align the school's curriculum with industry standards. He has earned a GPA of 3.79 and is ranked third out of 128 students in the Senior Class. Vice president of the FCTS National Honor Society, he is a recipient of a John and Abigail Adams Scholarship. His participation in the 2010-2011 FCTS Electrathon Team helped earn Franklin Tech a first place in the Connecticut Electrathon Challenge at the Lyme Rock Speedway, in its first year of participation.

Kenny is a volunteer for the Heath Agricultural Society as well as a member of the Derby Vermont Drift Busters Snowmobile Club. He plans to continue his employment at Valley Steel Stamp while pursuing further education in mechanical engineering at Springfield Technical Community College.



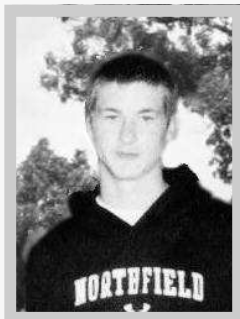
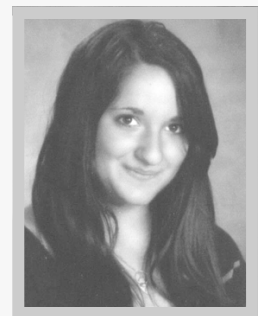
**Morgan Kain**, daughter of John and Lynn Kain, and a 2012 graduate of Franklin County Technical School, was a student in the Cosmetology program for four years and a member of the National Honor Society. She also played softball and field hockey through her years at the school.

Morgan received her cosmetology license in December 2011 and worked part-time at Peter's Hair Loft in Greenfield where she now plans to work full-time.

**Taylor Kain**, daughter of John and Lynn Kain, was in the Plumbing and Heating Program at Franklin County Technical School from which she recently graduated. She also played softball and field hockey during her years there.

The recipient of the Plumbing All-Star Award, the Master Plumber Award, and the Superintendent's Award, Taylor was president of the National Honor Society and Class Valedictorian.

She is an apprentice plumber and plans to work in the plumbing trade.



**Bradley Tatro**, son of Lee Howe and Tommy Tatro, a member of the 2012 graduating class at Franklin County Technical school, was in the Collision Repair Program.

His plans for the future are to one day own his own business in the auto repair business or in the culinary arts which has been his passion since he was very young. Who knows? Maybe a Body-Food franchise. He will fix your car and feed you at the same time.



## Library Lines

# EVERGREEN

## *The New Online Library Catalog*



By Donald Purington

C/W MARS, the organization that provides the online catalog for the Heath Free Public Library and most of the other public libraries in Western and Central Massachusetts, moved to a new catalog system over Memorial Day weekend. The new catalog called Evergreen now allows Heath Library patrons to borrow books and other circulating materials from participating Western and Central Massachusetts libraries. Take a look at the new catalog on our library Web site, .

Patrons using the online catalog to place holds and renew items will need to use a new password (PIN) the first time they login to the new system. Current patrons will use their last name in ALL CAPITAL LETTERS as a PIN. You will be asked to create a new password at that time. Library patrons who do not use the online catalog will notice no changes, other than an occasional "hiccup" as we (library staff) learn to use the new system.

A personal note: I will be out of the library for most of June and early July recuperating from hip replacement surgery. Lyra Johnson and Pat Leuchtman will operate the library in my absence.

### A Few of the New Items at the Library

**Adult Fiction Books:** *The Chemistry of Tears* by Peter Carey, *Home* by Toni Morrison, *Dorchester Terrace* by Anne Perry, *In One Person* by John Irving, *Unmarked Grave* by Charles Todd, *The Enchanted April* by Elizabeth von Arnim

**Adult Nonfiction:** *Some Assembly Required: a Journal of My Son's First Son* by Anne Lamott, *The President's Club: Inside the World's Most Exclusive Fraternity* by Nancy Gibbs, *Drift: the Unmooring of American Military Power* by Rachel Maddow

**Young/Teen Reader Books:** *Mysteries According to Humphrey* by Betty G. Birney (arriving in early July), *One Dog and His Boy* by Eva Ibbotson, *The Serpent's Shadow* by Rick Riordan, *Where Things Come Back* by John Corey Whalen

**Children's Picture Books/Board Books:** *Dear Zoo* by Rod Campbell, *Neville* by Norton Juster, *Penny and Her Song* by Kevin Henkes, *Two Little Monkeys* by Mem Fox

**DVDs:** *The Descendants*, *Game of Thrones* (the HBO series based on the novel by George R. R. Martin), *Girl with the Dragon Tattoo* (American version), *War Horse, 1776* (performed by the Heath School Drama Club)

**Audiobooks on CD:** *D.C. Dead* by Stuart Woods, *Shadows in Flight* by Orson Scott Card, *On Writing Well: the Classic Guide to Writing Nonfiction* by William Zinsser

**Music CDs:** *Old Ideas* by Leonard Cohen, *Next Right Thing* by Seth Glier, *Slipstream* by Bonnie Raitt

## Summer Reading and Crafts Program

The Heath Free Public Library invites children ages 5-12 to sign up for the Summer Reading and Crafts Program. Please stop by the library and pick up a Reading Log to keep track of the books you read this summer. Later in August, bring in your filled-out logs to receive prizes. Heath Elementary students can also use these logs for the PTP summer reading program.

This year we will be working with Larry Sampson, local film set designer/builder, to make a giant Mother Earth marionette for the Heath Fair parade. The crafts sessions will be held at the Fairgrounds during the work bees on Wednesday evenings 6:30-7:30. The dates are July 11, 18, and 25, and August 1. Free. Please call the library for more information 337-4934 ext. 7. Sponsored by Friends of the Heath Library and the local Cultural Council.

~ Lyra Johnson  
Assistant Librarian

"Come with me," Mom says, "to the library.  
Books and summertime go together."

~ Lisa Schroeder  
American Children's Book Author



## Heath Business Directory

**The Benson Place**  
Wild Blueberries & Blueberry Spread  
337-5340

**Fred Burrington**  
Artist  
339-0030

**Robert Delisle**  
Electrician  
337-5716

**Russell E. Donelson**  
Design/Construction/Cabinetry  
337-4460

**Jerry Ferguson**  
Home Improvement  
Lic. Electrician  
337-4317

**Earl M. Gleason**  
Fire Equipment  
337-4948

**Paul Turnbull**  
**Janice Boudreau**  
Commercial/Wedding Photographers  
337-4033

**Bonnie Wodin**  
Custom Gardens & Landscapes  
337-5529

**John Mooney**  
Custom Remodeling  
337-8344

**Wanda Mooney**  
Realtor  
337-8344

**Tripp's Blueberries**  
Taylor Brook Road  
337-4964

**Heath Brook Studio**  
Glass and Baskets  
337-5736

### Support Your Local Businesses

If you would like more information about the Heath Enterprise Council, please call Alicia Tripp at 337-4964

413-625-6623

# HAIR BY HANA

102 Bridge Street - Shelburne Falls, MA 01370

## Please Support our Advertisers

### Support Local Agriculture

Free 1 inch advertising space for local farmers.

Send copy to: *The Heath Herald*  
P.O. Box 54  
Heath, MA 01346

*Supported by a special grant made available  
through the Dickinson Fund*

**LIVELY  
CARETAKING**

**Tom Lively**

**Phone 413-337-4061**

**Cell 413-325-1065**

Email: [Lively1@crocker.com](mailto:Lively1@crocker.com)

Carpentry - Repairs, Remodeling,  
Mowing, Snow Removal, Painting



PO Box 55 Heath MA 01346



### THE BRIDGE OF FLOWERS BUSINESS CENTER

Office Space, Work Stations, Desks  
3-month leases starting at \$75/month

Business Class Internet, Commercial Quality Networked  
Printer/Copier/Scanner

Conference Room, Kitchen, Shower, Fax, Shredder, Land Line  
Serious Security by: Detectogaurd

**"Where People Go To Get Things Done"**

[www.bridgeofflowersbusinesscenter.com](http://www.bridgeofflowersbusinesscenter.com)

# Maple House



**The house on the hill with the view of yesteryear**  
Reward your friends and relatives with a restful night's sleep high in the hills of Rowe. They'll awake to a hearty homegrown breakfast in a 200-year old inn and family farm. See the stars, breathe clear fresh air, relax in the quiet beauty of spectacular views of the Berkshire Hills.

**Lodging and Breakfast from \$60. Call for Reservations.**

Middletown Hill Road (413) 339-0107 Rowe, MA 01367

## RUSSELL E. DONELSON

61 Sumner Stetson Road  
Heath, MA

Design/Construction/Cabinetry

To New and Existing Buildings

413-337-4460

Licensed/Insured

## A College Preparatory Day School for Grades 7—12 and Post Graduate



FIND YOUR VOICE. SPEAK YOUR MIND.

1359 Mohawk Trail Charlemont, MA 01339  
413.339.4912 [www.charlemont.org](http://www.charlemont.org)



## Rowe Camp & Conference Center

PO Box 273 Rowe, MA 01367

413-339-4954

[www.rowecenter.org](http://www.rowecenter.org)

A magical place to explore new horizons, heal,  
make new friends, have fun, be a part of  
community or find your place in the world.  
We offer weekend conferences on a wide variety  
of topics as well as space for private retreats.

*Retreat • Relax • Reflect • Relate • Revitalize*

- Custom Homes
- Additions
- Renovations

Phone: 413.337.8344  
Fax: 413.337.8304  
137 Burrington Road  
Heath, MA 01346



## Wanda Mooney, CRS GRI, SRES

413 337-8344 x 1

413 625-6366 x 13



**Wanda**  
**MOONEY**



UPTON-MASSAMONT  
REALTORS®

[WWW.WandaMooney.com](http://WWW.WandaMooney.com)

## Franklin Community Cooperative

Serving Your Community with  
Deliciously Healthy Foods  
with two co-op stores...

*at the Bridge of Flowers!*



### Green Fields Market

144 Main St., Greenfield

M-F 8-8, Sat 9-6, Sun 10-5

(413) 773-9567



### McCusker's Market

3 State St., Shelburne Falls  
Open Daily 7-7 (413) 625-9411



**The Baker  
Pharmacy**

Tel: 625-6324

Week Days 8:30AM - 8PM

Saturdays 8:30AM - 5PM

Holidays 9AM - 12 Noon

52 Bridge Street

Shelburne Falls

Town Nurse News

## Encourage Healthier Habits



By Claire Rabbitt, RN

I must be brief this month, as my right arm is still in a sling from recent rotator cuff surgery.

There has been much in the news lately about increasing obesity in the USA and the ever higher costs of health care because of it. For the future of our nation we all need to start by encouraging healthier eating and exercise habits in our families. We are fortunate, in this area, to have an abundant supply of locally grown fruits and vegetables, grass-fed beef, and free-range chickens. There are also plenty of tempting pastries and ice cream, that I try, but am not always successful in avoiding.

The bottom line is, it is up to each of us to take responsibility for our own health, with guidance from our health care providers. I find good suggestions each week in the Health section of *The Recorder*.

Please contact me with your health-related questions. Office 337-4847, Tuesdays 12:15-1:15 p.m.; Thursdays, 11:00 a.m.-1:00 p.m., Home 337-8309.

### Memories of Cousin Margaret

The Smith family was saddened by the loss of 100-year-old Margaret Smith Jones, who died on May 9, succumbing to her second bout of pneumonia this year. She had seemed so full of life and energy, when we celebrated her birthday last August, that we hoped she would have a few more years. She certainly had a longer life than most of us will be blessed with, and not long ago, had said to her niece, Peggy, that "Some people just live too long."

Margaret was born in Heath on August 20, 1911, the daughter of Carl and Nina Stockwell Smith. She and her brother, Robert, grew up in Heath and attended Branch School with some of their cousins, including Louis, who was the same age as Margaret. She went on to graduate from Arms Academy in Shelburne Falls, and the North Adams Normal School. She taught at the Brick School House in Colrain in 1933, and at the Colrain South School for four years, during World War II. There was an article in *The Recorder* last summer about her experiences while teaching at the Brick School. She was married to Deane Jones in 1933 and lived in the house they bought that year, on High Street in Shelburne Falls, until the time of her death.

Although Margaret did not have children of her own, she was very involved in the lives of her four nieces and nephews, and kept up with the lives of her many cousins, in several generations. We are indebted to her for the extensive genealogical research and documentation she accomplished, tracing the Smith family back to James Smith, who came from England in the 1600s, as well as other connections going back to the Mayflower. She was our best resource in identifying relatives and places in old family photographs, as well as remembering the names of the younger generation. I treasure the gift of connection with past generations she gave us and knowing her as a good Christian woman who never said an unkind word about anyone.

~ Claire Smith Rabbitt

### Walk for Breast Cancer

Hello friends,

I did it! This past weekend I walked the entire 39 miles with thousands of other men and women in the Avon Walk for Breast Cancer in Boston. The entire event raised \$4.8 million for the cause! My personal fund-raising total (thanks to you!) is \$6285! The weather was beautiful, the company was great, the volunteers took fantastic care of us, and I came out of it all with only a couple minor blisters! :) And that's ok because my blisters don't need chemo.

I cannot even begin to describe what an amazing experience this has been. I met some wonderful people and heard some incredible stories about so many people who have been touched by this disease. Every time we walked by someone's house and they stepped outside to shout and wave to us, "Thank you! I'm a survivor!" it truly brought tears to my eyes and helped me to remember just how important it is that I keep walking. I will keep walking...Because I'm In It To End It!

Thank you so much for being a part of this journey with me. I appreciate all the support you continue to give. I could not do this without you! ( And yes, I'm already signed up for the Avon Walk 2013! See you next year :)

Thank you!  
Jodi Walsh



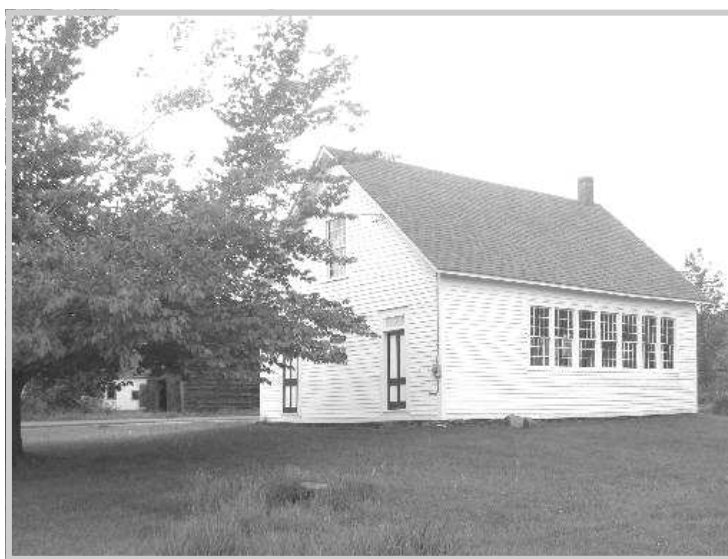


## Heath Historical Society - Upcoming Events

The Heath Historical Society will open the Old Town House and the Center Schoolhouse on several occasions this summer, for visitors to view the buildings and collections. The season kicked off on May 19, and will continue with a day of open houses each month through September. On June 30 we will hold a special event – a grand opening of the newly painted Center Schoolhouse. We hope that all will join us in celebrating the improvements to the building and exhibits, a project that has kept us busy throughout the year. Former students who attended school at the Center Schoolhouse are especially welcome!!



*Old Town House*



*Center Schoolhouse*

### CENTER SCHOOLHOUSE OPENING – JUNE 30, 2012 – 4:00 to 6:00 p.m.

This is the grand opening of the newly painted interior. Some refreshments will be available.

### OPEN HOUSE SCHEDULE – SUMMER 2012

Old Town House and Center Schoolhouse - Saturday, June 30 – 10:00 a.m. to 1:00 p.m.

Old Town House and Center Schoolhouse - Saturday, July 28 – 10:00 a.m. to 1:00 p.m.

Old Town House and Center Schoolhouse - Saturday, August 25 – 3:00 to 5:00 p.m.

Old Town House and Center Schoolhouse - Saturday, September 15 – 10:00 a.m. to 1:00 p.m.

### ANNUAL MEETING – AUGUST 25, 2012 – 5:00 p.m.

The Annual Meeting of the Heath Historical Society will be held August 25, 2012, in the Community Hall in Heath Center. A potluck supper will be held at 5:00 p.m. downstairs in the Senior Center followed by the Annual Business Meeting at 6:30 p.m. upstairs. The theme of this year's program, which will start at 7:00 p.m., is in recognition of the 225<sup>th</sup> Anniversary of the United States Constitution and the Town of Heath's incorporation in 1785. The Society is very fortunate to have Donald L. Robinson, the Charles Clark Professor Emeritus of Government and American Studies at Smith College, speak about his recent book *Town Meeting* that explains and relates the impact of the U.S. and Massachusetts Constitutions on the development of the Town of Ashfield, where he was a Selectman for nine years. His discourse will resonate with the history of the Town of Heath. The public is welcome.

~ Nina Marshall  
President

## Photography Exhibit

The Heath Community Hall is proudly hosting a photography exhibit of works created by local photographer Paul Turnbull.



A full-time resident of Heath, Paul has been connected with the Hallmark Institute of Photography in Turners Falls since 1975. At the Institute, Paul held numerous positions such as instructor, department head, executive director, and president. He was the director of the Hallmark Museum of Contemporary Photography until 2009, and has been published in countless books and publications. He has exhibited his work throughout New England and is an exhibiting member of the Vermont Center for Photography. Paul is in partnership with his wife Janice Boudreau in Turnbull/Boudreau Photographers.

The exhibit at the Community Hall will be open to the public on Saturdays from 11:00 a.m. to 2:00 p.m. during the summer months. We urge you to take the opportunity to stop by and view these beautiful photographs.

~ Eileen Tougas  
Community Hall Coordinator

## Singing at Dawn

*Singing at Dawn*, a collaboration between Colrain poet Carol Purington and noted composer Alice Parker, will be premiered by the Mohawk Trail Concerts on their July 19 and 20 programs.

Alice selected ten poems from Carol's book *The Trees Bleed Sweetness*, poems describing the life of a Native American woman from childhood to old age, and transformed them into a song cycle. The idea began with a suggestion from Mohawk Trail Concerts Director Ruth Black, and immediately inspired Alice. She knew of Carol's work and admired it, but they had never met. When Carol got a letter from Alice asking for permission to use the poems she said she was honored that a woman of Alice's reputation wanted to use them.

Alice set the poems for voice, flute, and percussion. She said the percussionist will play lots of different instruments, rattles and drums, and "clicking things." The idea was to suggest the noises of the forest. Carol said she appreciates that Alice's music sounds like birdsong.

The result of this rare collaboration will be a highlight of the MTC season.

~ Pat Leuchtman

## 2012 Annual Town Meeting



Town Clerk Hilma Sumner swears in the newly elected officials.



Tasty breakfast treats provided by the Friends of the Heath School Library are always a "big hit" at Annual Town Meeting.

Photographs by Art Schwenger



**Mohawk Trail Concerts**  
**43RD SUMMER FESTIVAL**  
June 29-July 28, Fridays 7:00, Saturdays 7:30 pm

July 4 at 4:00 *Jazz with John Clark*  
*Free concert on Riverbank*

**Cross Cultural Programs Music from Near & Far**



French Connections  
Alice Parker/Carol Purington  
*Songs Premiere*

**Information and tickets**  
**413.625.9511**  
Federated Church, Rte. 2, Charlemont, MA  
[www.mohawktrailconcerts.org](http://www.mohawktrailconcerts.org)

## Selectboard's Report

### Summer Meeting Schedule

The Board will meet every other Thursday evening at 7:00 p.m. in Sawyer Hall unless posted otherwise.

### Town Election Results

Town Elections were held on Friday, May 11. The results were as follows:

Selectman – Sheila Litchfield

Finance Committee – Katherine Inman and Gloria Fisher

Assessor – Richard Gallup

Planning Board – William Gran

Library Trustee – Deborah Porter

School Committee (one year) – Robert Gruen

Dog Officer – Robert Tanner Jr.

Constable – Jeff Simmons

Constable – Robert Tanner Jr.

### Special Town Meeting

This year's Annual Town meeting on Saturday, May 12, was preceded at 8:30 a.m. by a Special Town Meeting. There were six "housekeeping articles" on the Warrant that consisted of transferring money from accounts with surpluses to those with deficits. The entire Warrant was approved.

### FY12 Annual Town Meeting

The Annual Town Meeting followed the STM at 9:00 a.m. There were 26 articles on the Warrant. The meeting elected Town officers not chosen by ballot, appropriated funds for the school assessments and capital projects, reestablished the various revolving accounts, transferred money from Free Cash to Stabilization, transferred funds from Free Cash to reduce taxes, agreed to borrow money to replace the highway garage doors and to purchase a new dump body for a truck. Among the more unusual items considered this year was a temporary moratorium on the construction of large-scale, wind-energy systems and large-scale photovoltaic systems. The Planning Board needs time to complete work on a bylaw regulating these types of projects and asked the Town Moderator if he would allow consideration of the proposed bylaw at a Special Town Meeting since the bylaw may be ready before next year's Annual Town Meeting. The Planning Board is anxious to get the bylaw approved before the State passes regulations and imposes them on the towns that have none in place. The Moderator asked the Meeting to approve bringing this before a Special Town Meeting since the issues had been discussed at the ATM where such important issues are generally decided. No objections were made, and the request was approved.

Article 3, the FY13 Town budget, was reviewed line by line and anyone was allowed to question expenditures as they were read. A number of items were questioned but none was rejected by the Meeting. Several articles were passed over. An article requesting \$100,000 for bridge engineering was passed over because the Town was notified that one of the bridges in question had been approved under a federal program for replacement including the engineering fees. Another article requesting borrowing \$30,000 for a Town facilities feasibility study was passed over due to a technical issue regarding ap-

proval for borrowing for this type of a project. The study will be brought back to a Special Town Meeting for approval at a later date. Also passed over was an article by the Board of Health to accept the provisions of G.L. Chap. 40, sect 22F allowing Town boards or officers to fix reasonable fees for issuance of a license, permit, or certificate. The final article passed over requested a change to the Transfer Station hours. The question also was put on the ballot for more voters to weigh in on which hours they would prefer the Transfer Station to be open during the winter.

Reports of the Municipal Complex Committee and the Space Needs Task Force were available for review by those attending the meeting. A brief synopsis of the work of those groups was presented by Bob Bourke and Sheila Litchfield. The work of these committees will be furthered by passage of funding for a feasibility study at a Special Town Meeting in the near future. The objective of this study is to provide data to guide Town decisions about existing buildings and space needs.

### Selectboard Reorganization

The Board voted at its meeting on 5/24/12 to choose Sheila Litchfield as Chair. Tom Lively served excellently in that position for the past 16 years and deserves our thanks.

### Heath Online

Take some time to visit the Town's Web site at [www.townofheath.org](http://www.townofheath.org). You'll find Selectboard meeting minutes, school information, and much more. You may contact the Board at [BOS@townofheath.org](mailto:BOS@townofheath.org). Send messages to any board or individual via the e-mail address, or visit the Heath Web site. The new Web page is up and running. Please have a look and let us know what you think.

~ Heath Selectboard  
Sheila Litchfield, Chair  
Thomas Lively  
Brian De Vriese

## Reduce, Reuse, Recycle...Rethink!

The Springfield MRF Advisory Board's Reduce, Reuse, Recycle...Rethink! guide is now online at: <http://www.epagefilp.net/i/63130>

Last year many towns posted a link to the 2011 guide that has now been removed from the Gazette Web site. Please replace with the new link.

The guide features "What Do I Do With...?", a comprehensive, up-to-date, local listing of what to do with hundreds of unwanted items, plus kids pages, textile recycling, a "Green Your Organization" chart with free resources to green your school, business, home, and much, much more...



### Annual Town Election Results May 11, 2012

Election Day this year saw mild weather with a lot of sunshine. This, plus the contested selectman's seat, resulted in a large voter turnout. There were 214 ballots cast or 43% of total 494 registered voters. Election results are as follows:

*Selectman:*

Sheila Litchfield	151 votes
Rebecca Allen	62 votes

*Assessor:*

Richard Gallup

*Town Clerk:*

Hilma Sumner

*Finance Committee:*

Edwin Wolf  
Gloria Fisher  
Kathryn Inman

*Planning Board:*

William Gran

*Library Trustee:*

Deborah Porter

*Dog Officer:*

Robert Tanner Jr.

*Constable:*

Jeffrey Simmons  
Robert Tanner Jr.

*School Committee, 1 year:*

Robert Gruen

*School Committee, 3 year:*

No declared winner; goes to 1 year appointment by the Selectboard

**Question 1: Winter Transfer Station Hours (non-binding)**

A.Sat & Mon: 71  
B.Sat & Wed: 97

To all the newly elected and reelected officials, congratulations and best wishes during the years ahead while you serve our Town.

~ Hilma Sumner, Town Clerk

Among the many problems posed by this year's budget process was the fact that the Town's total assessed valuation dropped \$809,372 from last year, which meant, since when valuations drop, tax rates rise (for a constant level of expenditure), that we were starting out with a 19¢ rise in the tax rate. If total assessed valuation had remained the same as last year, the estimated tax rate that resulted from this year's voter-approved budget would have been \$19.88, an increase of 4¢.

These unhappy consequences of the continuing decline in the market for residential real estate – the only significant source of tax revenue for the Town – meant that we had to ask Town department heads for substantial savings. We did not recommend buying a new truck for the Highway Department this year, but recommended \$40,000 for a new truck body for one of the department's vehicles. Similarly, we did not recommend replacing the 11-year-old police cruiser, but recommended \$4,000 for major maintenance for the vehicle. We did not recommend that the Town spend \$1,650 for signs demarcating the Heath Center Historic District. With reductions like these, large and small, we were able to recommend a budget with an estimated tax rate that increased at a much lower pace than the cost of living (estimated at 3% by the Franklin Regional Council of Governments) and the proposed state budget increase (as of mid-May) of 3.7%. At the same time, we were able to recommend, and the voters approved, a cost-of-living adjustment, or COLA, of 3% for Town employees.

We also recommended, and the voters approved, borrowing \$40,000 for the new truck body and \$16,000 for expanded doors for the Highway Department garage. We had planned to ask that the voters also approve borrowing \$30,000 for a feasibility study on the Town's space needs and a proposed municipal complex. We learned at the last minute, however, that state law does not permit towns to borrow for this purpose, and this issue will have to be taken up at a future Special Town Meeting.

The outlook for future years is somewhat, but only somewhat, less grim than our budget situation over the last three years. This year's Town Meeting approved (with shouts of joy) the last payment on the Heath Elementary School mortgage. That annual payment, of about \$53,000, will go away. But the town's roads will need substantial attention; we must address the question of whether the Town needs and can afford a new municipal complex as well as expansion of office, library, and storage space; vehicles will continue to wear out. Much depends on the state of the national economy. If the residential property market continues to decline, then for small towns like Heath whose only significant taxable resource is residential real estate, the prospect is for continuing increases in the tax rate.

This year will mark significant changes in the membership of the Finance Committee. We welcome Gloria Fisher, the former Town Coordinator, and Kathryn Inman, who were elected to the Committee to replace Janis Carr and Dave Gott, who are leaving us. We will miss Jan and Dave, whose careful work greatly assisted our endeavors, and look forward to working with Gloria and Kathy.

~ Don Freeman, Chair  
Gloria Fisher  
Kathryn Inman  
Jeff Simmons  
Ned Wolf, Secretary

### FINANCE COMMITTEE REPORT

The Finance Committee worked through the early spring with the Selectboard to recommend a town budget for the 2013 Fiscal Year, which was adopted by the voters at the Annual Town Meeting on May 12, 2012. The total tax levy is \$1,758,907, and the Finance Committee estimates the tax rate at \$20.07, an increase of 23¢ or 1.16% over the fiscal 2012 certified tax rate of \$19.84. We estimate the average single-family property tax bill in FY 2013 at \$3,708, an increase of \$46 over our estimate for FY 2012. The Town's "rainy day" funds remain stable, with Free Cash at \$49,525.88 and the Stabilization fund at \$113,325.66.

## Milestones

**Allan D. Adie** of Gill died on April 19, 2012. Born in Boston on August 18, 1915, he was the son of Allan and Elizabeth Rosenbach Adie.

He enrolled in the Civilian Conservation Corps where he met his future wife of 73 years, the former Angelina E. Murley. He was employed at the Northfield Mount Hermon School, at Millers Falls Company, and lastly at A. R. Sandri Company until retirement in 1983.

An active volunteer in Gill organizations, he received *The Recorder's Citizen of the Year Award* in 2000.

In addition to his wife, he is survived by three daughters, Beverly Demars and Susan Sibley, both of Gill, and Judith Nelson of Brattleboro, VT; two sons, Allan Adie Jr. of Northfield and **David Adie** of Shelburne, formerly of Heath; 13 grandchildren, and 26 great-grandchildren.

Memorial donations may be made to Our Lady of Peace Church Renovation Fund or to Justice and Peace Commission Care, 90 Seventh Street, Turners Falls, MA 01376.

**June Anita Bigelow Hoyt** of Hawley died on March 24, 2012. Born in Northampton on July 15, 1952, she was the daughter of Kenneth S. and Alice M. Bangs Bigelow. She was a graduate of Mohawk Trail Regional High School.

She is survived by her husband, Frederick D. Hoyt; her father of West Swanzey, NH, her five brothers, George Wade Sr. of Chesterfield, David M. Wade of Amherst, Clifford L. Bigelow of Florence, **Stephen P. Bigelow of Heath**, and Mark E. Bigelow of Hawley; two sisters, Jacqueline L. Pierce of Cabot, NH, and Karen S. Umstot of York Springs, PA.

**Daniel "Boone" Hyytinen** of Charlemont died on May 4, 2012. Born in Greenfield on June 13, 1950, he was the son of Reino and Virginia B. Pierce Hyytinen.

A self-employed handyman, he was a US Army veteran having served in the Vietnam War.

He is survived by his sons, Daniel B. of Buckland and C. Selmi of Rowe; four brothers, Michael of East Hawley, **James S. of Heath**, Reno of Charlemont, and Jeffrey of York, ME; three sisters, Norma Lynch, Elaine Ledger, and Marie Hyytinen, all of Charlemont, and four grandchildren.

A graveside service with military honors was held on May 9 at Leavitt Cemetery.

Memorial donations may be made to VA Medical Center, Indigent Veterans Fund, GPS 1003, Attn.: agent cashier, 421 N. Main St., Leeds, MA 01053.

**Kenneth A. Stetson** died on May 27, 2012, at Charlene Manor, Greenfield. Born in Heath, he was the son of Herbert S. and Beulah Hager Stetson.

He is survived by his wife **Dorothy Lee Stetson**; his two daughters, Karen Duda of Whately, and **Kris Nartowicz of Heath**; his two sisters, **Lois Stetson Buchiane of Heath** and Muriel Stetson Antes of Conway, four grandchildren, and one great-grandchild.

He was predeceased by his two brothers, Stewart Stetson and Douglas H. Stetson.

*Requiescat in pace*

## Heath People in the News

**Katherine Merrill**, daughter of **Kara Leistyna** and **Robert Bourke**, was selected for an award in the 2012 Massachusetts Junior Duck Stamp Program.

Katherine, a Frontier Regional High School student, achieved honorable mention for her artwork. 497 students from across the Commonwealth participated in the program, sponsored by Mass-Wildlife, Division of Fisheries & Wildlife. The recognition earned is well deserved for Katherine's artistic ability and creativity.



## Other Graduates of Note

**Aurie Ingraham-Adie**, daughter of David Adie of Shelburne and Jaimye Ingraham of Greenfield, both formerly of Heath, was a member of the 2012 graduating class of The Academy at Charlemont.

A graduate of the Heath Elementary School, Aurie has been a member of the Lively Dance Group at the school since preschool days. At The Academy she was active with the Community Service Council and the A Cappella group. She played lacrosse, soccer, and tennis and participated in Yoga. Her Senior Project involved working with the Dakin Pioneer Valley Animal Shelter and educating her community about the Shelter. She fostered numerous cats this year before they were adopted by various families.

In the fall, Aurie will attend The University of New England in Biddeford, Maine, and plans to major in Animal Behavior with a minor in Environmental Studies.

At the recent graduation ceremony of Greenfield Community College, **Ruth Ayers**, daughter of **Hilma Sumner**, received the Associate degree in General Studies. She will be attending the Stockbridge School of Agriculture studying plant science. Currently she is employed by the Apex Orchards in Shelburne.

**Michael Wilmeth** was awarded the Master's Degree in Clinical Mental Health Counseling at the May 12<sup>th</sup> graduation ceremony of Antioch University, New England in Keene, New Hampshire.

Currently he is employed as a therapist for the Outpatient Clinic of Clinical & Support Options as well as continuing to work for Crisis Services, both of Greenfield. In order to be licensed by the State as a Clinical Mental Health Counselor, he must accumulate 2000 hours of work in the field.

*"Bees do have a smell, you know,  
and if they don't they should,  
for their feet are dusted with  
spices from a million flowers."*

Ray Bradbury  
From *Dandelion Summer*

The Heath Herald Staff

wish to extend

sincere congratulations

to the

2012 Heath Graduates

and to their proud parents

Best wishes for a shining future!

### Heath's Monthly Precipitation (inches)

(Observed by Heath School Staff and Students)

	<u>Rain</u>	<u>Snow</u>
From March 11, 2012	¼"	Dusting
April	2 ¾"	Flurries
To May 10	1"	

#### In this reporting period:

For most of March it was snow-less and well above normal temperatures. The third week of March had daily temperatures in the 70s. We ended the month with cold "normal" temps (16 degrees on the 27<sup>th</sup>) and a dusting of snow on the 31<sup>st</sup>. April started with the first three weeks with very cool dry conditions. This prompted many "Red Flag" days during the Brush Burning season. We had our first real rain on the 23<sup>rd</sup>, which dumped up to 2 ½ inches. The first week of May was on the cloudy, damp, and cool side.

~ Timothy Lively

## Community Calendar

### JUNE 2012

**Heath Fair Work Bees every Wednesday until the Fair at the Fairgrounds from 6:30 p.m. until dark**

**June 01** - Heath School 6<sup>th</sup> Grade Family Move-Up Day

**June 02** - Heath School Strings Tag Sale, Shelburne Falls, 9:00 a.m. to 1:00 p.m.

**June 03** - MTRHS GRADUATION, 1:00 P.M.

**June** - Heath School Student Art Show, 6:00 to 8:00 p.m.

**June 05-06** - Mohawk MCAS Biology

**June 06** - Heath School Grades Three/Four Trip to Sturbridge Village

**June 07** - Senior Luncheon, Community Hall-Senior Center, 11:45 a.m.

**June 08** - Heath School Volunteer Brunch, 9:30 a.m.

**June 11** - Mohawk Underclass Awards, 9:00 a.m.

**June 12** - Heath School Pelham Lake Afternoon

**June 13** - Heath School Field Day Afternoon

**June 15** - HEATH SCHOOL 6<sup>TH</sup> GRADE GRADUATION, 6:30 P.M.

Mohawk Final Exams, 11:30 a.m. Dismissal

Heath School, 12:00 Dismissal

**June 18** - Mohawk Final Exams, 10:50 a.m. Dismissal

- Heath School, 12:00 Dismissal

- LAST DAY OF SCHOOL

### HAPPY SUMMER!!

**June 21** - Senior Luncheon, Community Hall-Senior Center, 11:45 a.m.

**June 24** - Annual Rose Viewing, End of Road (Leuchtman)

1:00 to 4:00 p.m.

**June 30** - Heath Historical Society Center Schoolhouse Opening,

4:00 to 6:00 p.m.

### JULY 2012

**July 05** - Senior Luncheon, Community Hall-Senior Center, 11:45 a.m.

**July 11** - Summer Craft Program Begins, Fairgrounds,

6:30 to 7:30 p.m.

**July 15** - Summer Craft Program, Fairgrounds, 6:30 to 7:30 p.m.

**July 19** - Senior Luncheon, Community Hall-Senior Center, 11:45 a.m.

**July 25** - Summer Craft Program, Fairgrounds, 6:30 to 7:30 p.m.

**July 28** - Community Hall Summer Craft Sale, 10:00 a.m. to 3:00 p.m.

Morning Coffee and Lunch. 10:30 a.m. to 1:30 p.m.,

Senior Center

- Heath Historical Society Old Town and Center

Schoolhouse Open House, 10:00 a.m. to 1:00 p.m.



"Spring flew swiftly by, and summer came; and if the village had been beautiful at first, it was now in the full glow and luxuriance of its richness. The great trees, which had looked shrunken and bare in the earlier months, had now burst into strong life and health; and stretching forth their green arms over the thirsty ground, converted open and naked spots into choice nooks, where was a deep and pleasant shade from which to look upon the wide prospect, steeped in sunshine, which lay stretched out beyond. The earth had donned her mantle of brightest green; and shed her richest perfumes abroad. It was the prime and vigour of the year; all things were glad and flourishing."

~ Charles Dickens  
From *Oliver Twist*



MASSACHUSETTS CULTURAL COUNCIL

"This publication is supported in part by a grant from the Heath Cultural Council, a local agency which is supported by the Massachusetts Cultural Council, a state agency."

## PETER'S GENERAL STORE

Debbie and Paul Plante, Proprietors  
Number Nine Road, Heath  
337-5501

- ◆ Fresh Produce
- ◆ Freshly-baked pies
- ◆ Blue Seal products
- ◆ Family Videos
- ◆ Penny Candy
- ◆ Soda, Grinders, Ice Cream
- ◆ Beer, wine, liquor
- ◆ All food essentials



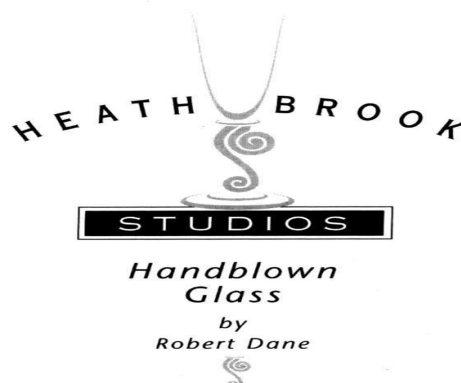
### STORE HOURS

Monday – Saturday, 8 a.m. – 7 p.m.  
Sunday, 9 a.m. – 7 p.m.

**HEATH HERALD**  
Box 54  
Heath, MA 01346-0054

RETURN SERVICE  
REQUESTED

PRST STD  
U. S. POSTAGE  
PAID  
Permit No. 305  
Greenfield, MA 01301



24 West Main Street, Heath, MA 01346 p/f

**Our Customers are  
our greatest asset.**

*Serving the financial needs of Western Massachusetts  
for over 20 years.*



413.781. BANK- bankwmass.com - Member FDIC