



# HEATH HERALD

HEATH'S FIRST NEWSPAPER 25¢

## HEATH BICENTENNIAL CALENDAR

The Heath Historical Society has announced the publication of a 1985 calendar to commemorate the bicentennial celebration of the Town of Heath. The calendar created by Pat Leuchtman and Amy Barry, contains outstanding photographs from the Society's collection depicting people and places of Heath during the latter part of the 19th century and early 20th century. Significant dates in Heath's history are also included.

The Heath Bicentennial Calendar will make an appropriate Christmas gift for relatives and friends as well as a special memento of 1985. Copies will be on sale at Peters' Store, the Ladies Aid Fair, the Historical Society Festival, and the Heath Fair.

A copy of the calendar may be purchased directly from Pat Leuchtman, c/o Heath Historical Society, Heath, MA 01346. The cost is \$6.00 with an additional charge of \$1.00 if sent by mail. Checks should be made payable to the Heath Historical Society.

## HEATH HISTORY INDEX AVAILABLE

After three years of work, the index to Edward Calver's Heath, Massachusetts is now completed. The index was compiled by Amy C. Barry, Curator of the Heath Historical Society. Over the six years Mrs. Barry has been curator, she has been contacted by numerous people looking for Heath ancestors. Also in cataloging artifacts and documents for the Society, Mrs. Barry has become very interested in the histories of Heath families and their interrelationships. Therefore, the index was developed primarily as a tool in genealogical research and places emphasis on the people of Heath. Other areas of interest that have been indexed include references in the Calver history to churches in Heath, industry, schools, town government and significant historical events in which Heath played a part.

The Index is available in a soft binding that compliments the cover of the Heath history and costs \$3.00 plus \$1.00 for mailing. The Index may be purchased from the Heath Historical Society by contacting Mrs. Amy C. Barry, Heath MA 01346. Checks should be made payable to the Heath Historical Society.



## HORSES IN HEATH

by Brenda Clark

Would you believe that there are close to forty horses here in town? They range from ponies to pleasure and work horses. Pleasure riding horses outnumber both ponies and work horses combined.

The breeds range from Shetland and Welch ponies to riding horses which are usually either Morgans, quarter horses, Arabians, Tennessee Walkers, or Appaloosas just to name a few of our local breeds.

As for the work horses, there are only about four in town, and I believe they are either Belgians or Percherons.

The newest arrival belongs to Shelly Galipo. Her mare had a colt on Wednesday, May, 23, 1984!



Brenda's Tee John Boy

August 1981

(Photo by Brenda Clark)

## TOWN VALUATION NEARS COMPLETION

As this issue of the HERALD goes to press over half of the listings for the town's revaluation have been entered into the computer at the HEATH HERALD. Since this system is compatible with the new town computer being purchased, the data can easily be transferred and used in the assessors' office.

Chairman Richards Steinbock of the Board of Assessors has indicated that the remainder of the town "reval" listings will be available within another ten days. After entering these additions and proof checking, the HEATH HERALD will publish a special issue later in June containing the complete town listings.

## CARDS OF THANKS

I would like to thank all my relatives and friends for their many cards, flowers, visits and other acts of kindness when I was taken ill in December and during my convalescence.

GRACE LANDSTROM

\* \* \* \* \*

We extend a sincere "Thank You" to all our friends for the cards, calls and offers of help during the time Ernie was in the hospital. We are grateful too to the men who filled our cellar with much needed firewood and to Mrs. Anne Carey of Rowe who supplied it. It is wonderful to know that so many people care!

The THANE FAMILY

\* \* \* \* \*

George and I would like to thank all of you who helped make the pot luck supper in honor of George such a memorable event.

We were overwhelmed by the kind words expressed and the appreciation showed. Your kindness and generosity will never be forgotten.

GEORGE AND THERESA MARCHACOS

\* \* \* \* \*

Thank you, neighbors and friends for your kindness and thoughts during our recent misfortune.

JOANNE and BOB DeLISLE

\* \* \* \* \*

### Howard Crowningshield

Building & Remodeling

Tel: Heath 337-4406  
P.O. Charlemont, Ma. 01339

## HEATH HERALD

Volume 6 Number 2

June - July 1984

Editorial Staff

Pegge Howland  
Caroline Smith

Editorial Assistant  
Staff Reporters

Helen Nichols  
Edith Royer  
Susan Silvester  
Alli Thane

Advertising and Business  
Circulation  
Typography

John Read  
Terry Pettengill  
Newland Smith

The HEATH HERALD is published six times a year in April, June, August, October, December and February  
SUBSCRIPTION RATE - By first class mail: one year, \$2.50 (payable in advance by check or money order)  
ADVERTISING RATES - Display ads: \$3.50 per column inch (Discounts on six or more insertions)  
Classified ads: \$1.00 per line.  
Send all correspondence to Box 54, Heath, MA 01346

## HEATH PEOPLE IN THE NEWS

Marge and Glenn Dearden have left Heath to make their home in Albuquerque, New Mexico. They will live in an apartment while Glenn builds their new home, which will have all modern conveniences - quite different from their Heath house where there was no electricity and, for some time, no telephone! Marge hopes to continue her studies in Spanish and maybe French.

Michael Nichols and his wife of New York have purchased the Deardon place. Dr. Nichols is a surgeon and his wife is an attorney.

Paul Turnbull and Janice Boudreau are renting the former Timothy Smith house on Colrain Stage Road while building their new home on 8A at Rowe Road.

Julie Locke is artist-of-the-month at Mohawk Regional High School.

Hilma Kuzmeskus, daughter of Clyde and Ruth Churchill, graduated in May from Toccoa Falls College in Georgia. Hilma received a B.A., magna cum laude, from the School of Bible and Theology of the college.

Cynthia Cole received a B.A. with honors in Elementary Education from the "University without Walls" through the University of Massachusetts.

Lynn Carrier L.P.N. received an Associate Degree in Science from Southern Vermont College in Bennington. She will take her state board exams in July to become a registered nurse. Lynn is the daughter of Don and Lucia Fink.

Diane Stowe, daughter of Carroll and Peggy Stowe, is on the Dean's List at Bay Path Junior College and was elected to the Maroon Key Honor Society.

Chuck and Phyllis Kades have returned from a trip to Bermuda where they surprised Chuck's daughter, Caroline, and her husband who put in there on the last leg of their sailing trip around the world in a catamaran. They left Australia just a year ago and in another month should land in England in time for a race of catamarans.

Luke Housner, piano student of Chonghyo Shin, performed in a competition on June 10, at the University of Massachusetts. In the MMTA statewide contest and evaluation, Luke played a Beethoven Sonata and one of Schumann's Scenes of Childhood.

Robert Dane will spend three weeks this summer as Artist-in-Residence at Artpark in Lewiston, NY where he will work in a glass blowing studio. This is a publicly funded state park dedicated to all aspects of the arts with studios open to the public, as well as performances in music, theater and dance.

Marisa Housner, ballet teacher and student, will again be giving classes this summer in the Heath Community Hall.

Jack Purkis has sold his house on Rowe Road and has moved with his family to Texas. Jack was the Heath Civil Defense Director and active in the Fire Department.

## HEATH PRECIPITATION

by Ralph Dickinson, Observer  
for Mass. Water Resources Commission

April rainfall was 6.89 inches; May rainfall was 12.88 inches. Total precipitation, January through May 1984 was 34.93 inches.

The average annual rainfall during the past 17 years is 50.44 inches.

The steady rain we had, May 28 through noon May 31, produced 7.43 inches and helped make May the wettest month in years.

## THE TRIP

by Marcella R. Lively

When I was around eighteen, my oldest brother and his family rented a cottage on Winnesquam Lake in NH for the summer. Being a very sharing brother, he invited me and our cousin, Martha, to spend the day with them.

Having a driver's license but no car, I had to use my wiles to see if I could somehow manage to extricate a car from its owner, namely my second oldest brother, who had encouraged me to get a license in the first place! He, being another sharing soul, resisted not at all, in fact he was happy about the whole thing!

Martha and I worked in different places and had to juggle our days off to coincide with each others. After much maneuvering we did just that.

On the phone the night before, we received marvelous instructions from brother on how to get there. We diligently copied everything down in a notebook and went to sleep with dreams of a fun day ahead.

The morning dawned bright and clear, in fact it was just gorgeous! We reviewed our directions which said to follow Route 3 several miles north, take a lesser road in a certain small town, follow that X number of miles, take another left at a gas station, etc.

I picked Martha up at 6 AM and off we went with a feeling of freedom for the open road ahead! After riding a while we stopped for coffee at a nice little shoppe and, of course, also some chatter. Back on the road we followed our directions carefully, but after a short while the road got smaller and smaller.

We came upon this bridge that certainly didn't look like the one in our directions! It didn't look very safe to me, so I asked Martha to get out and test it. After jumping up and down on it, she informed me that it looked good to her. We crept over it gingerly and after a short while the road disappeared into a cow path! At this point, we were laughing hysterically causing our stomachs to hurt, and at the same time trying to see a spot where we could turn around.

Finally, we came upon a small patch of ground free from bushes and, after much back and forth motion, we got the car headed back from whence we came! I climbed out hating to look at the exterior paint job, thinking it had gotten all scratched up, in which case my brother, number two, would not have been too happy but, thank the good Lord, all was well with the car!

We finally retraced our journey to the main road, and asked the first kind soul to put us on the right track.

When we arrived at the cottage we were two hours overdo and they were beginning to worry. While eating a delicious dinner, we recounted our meanderings, and they looked at us as if to say, "Can't you follow simple directions?"

The funny part is, to this day I can recall our wrong turns and the laughs along the way that were shared by my cousin and me, more vividly than I can the actual time spent at the cottage on the shore of Winnesquam Lake.

I haven't heard from Martha these past few years, but I can bet that if we did get together, it wouldn't be long before we would be journeying again, up Route 3 to Winnesquam Lake - in our conversation, that is!

## HEATH TOWN NURSE

by Terry Pettengill

At the annual Town Meeting on May 7, Heath voters rescinded and revoked a 1950 vote which created the Western Franklin Health District and the allocation of funds assessed against the town of Heath for its proportionate share of costs with the three other towns involved. They also voted to withdraw from this District and to terminate any participation and involvement, effective in one year according to terms of notification.

Voters also approved an appropriation of \$3100 to hire a town nurse - approximately the amount needed to remain in the District. According to Selectman Anne Steinbock, this would furnish coverage for approximately seven hours a week.

The towns of Hawley and Rowe also voted to withdraw from the District but so far have not provided funds or indicated an intention to hire their own town nurse. If they should decide to do so, the Heath town nurse might also apply for the job in those towns under their terms, making the part-time position into a full-time week.

Charlemont alone voted to continue the District, meaning the town, not individuals, would pay for nursing services. However, Charlemont hasn't yet appropriated funds to replace Mrs. Janet Bliss, RN, who resigned last fall.

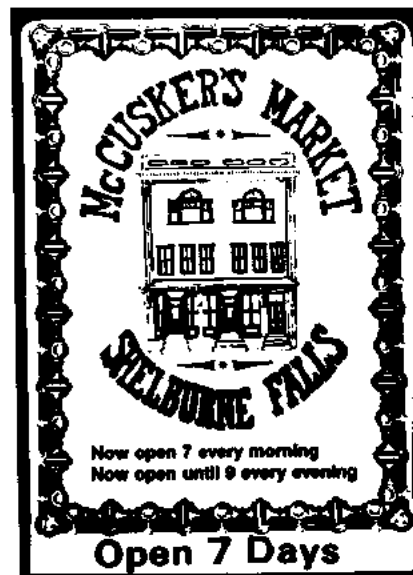
The Greenfield Visiting Nurses Association services are available to all involved towns with the cost being covered by the individual, or his or her insurance, if provided.

This reporter has been told that the VNA provides a different service from that of a town or the District Nurse and there have been many rumors as to the fees involved. It will take time for a new service to iron out its kinks to everyone's satisfaction.

## OVER THE TOP

The Cancer Drive in Heath brought in a record \$526 this year according to Caroline Smith, Heath Captain for the American Cancer Society.

Thanks go to the dedicated volunteers who worked on this canvas as well as to all who made the generous contributions.



## HEATH GRADUATES

The HEATH HERALD extends best wishes to our students graduating from local schools:

Rowe Elementary School: Tammy Archambo, Joe Canali, Heidi Crowningshield, Charlotte Decker, Amber Sullivan

Mohawk Trail Regional School: Nichole Fogarty, Sandi Galipo, Charlene Hamilton, Martha Lively

Franklin County Technical School: Daniel Gleason, Todd Howe

Greenfield Community College: Brenda Cromack, Martin Peters

## SCHOOL COMMITTEE NEWS

by Susan Gruen, Chairman

The new school committee started the year with elections: Susan Gruen, Chairperson; Patrick Veneri, Vice Chairman; Linda Marcotte, Secretary. Patrick Veneri will remain the representative from Heath on the Mohawk School Board.

• Our meetings are on the second Tuesday of each month at 7:30 PM at Susan Gruen's house. We will try to maintain this schedule as long as our work schedules will permit. Adequate notice will be posted at the town hall in case there is a change.

The Committee expressed the hope that residents of Heath will attend the meetings and voice their opinions and concerns regarding all school issues. It is only through your voice that we can better serve the students of Heath.

After 15 years at the Rowe School, Karen Fournier will take a leave of absence for the next year. Mrs. Fournier has taught grades 1 through 5 at the school and has been the 1-2 grade teacher for the past eight years.

Field Days at Rowe will be on June 26 and 27 in the mornings. Parents who can lead some fun activity are welcome to join in the end of year program.

The Rowe sixth grade graduation will be held on Tuesday, June 26 at 7 PM. The school band and chorus will perform. Everyone is cordially welcome.

## HEATH FLOWER GARDENS WANTED

The Heath Historical Society Bicentennial Committee is looking for flower gardens to include in a planned garden tour during the summer of 1985. If you are interested in having your garden shown as a part of this tour, you are asked to contact Pat Leuchtman at 337-4316.

### PHIL'S PICK-UP

You Chuck It - I'll Truck It

Call 337-4360

*K.R. Jeweler*

17 Chapman Street • Greenfield, Ma. 01301

*Fine Selection of Watches & Jewelry  
Watch & Jewelry Repair*

## ACADEMY NEWS

by Luke Housner, '89

The ending of the school year at the Academy was joyous (finals over), but sad. We bid farewell to six seniors, each departing into separate lives.

This had been a busy spring which included several field trips ranging from the middle school's day in Boston, to the 9th grade's weekend in New York City, to the residence students' whale watch voyage.

Graduation, June 3, was at the Federated Church and was attended to the point of standing room only. There were two extensive musical presentations, directed by Jayne Dane and accompanied by Phyllis Kirkpatrick, Kate Berrien, and Luke Housner. Awards were made for academic, athletic, and music achievements. This was followed by an elaborate dinner and dancing at the Academy. The evening was warm, festive, and well enjoyed.

An extension to the school year has been the project of the Academy drama group. Twelve students plus several technicians, under the direction of Nick Scrimshaw, performed "a critical review" of the play Undine, on June 8th. The group spent the preceding week together, living at the Charlemont residence hall, rehearsing, and preparing for their production. They learned not only what a theatrical effort involves but gained from experience of working together above and beyond the call of school.

I will be back in the fall with more news from the Academy at Charlemont.

## MOHAWK TRAIL REGIONAL NEWS

by Sue Silvester

On Tuesday, June 12, the annual Horse Show for students in grades 7-12 in the nine-town area will be held at Sunny Day Farm in Charlemont. The show is sponsored by the Mohawk Trail Regional School Horseback Riding Club. Arlo Seaver of Heath will be a participant.

Any family in Heath wishing to host an American Field Service exchange student for the next school year may call the Resource Center at Mohawk for more information (625-2516).

The last day of school this year will be Wednesday, June 27 for faculty; students will be taking final exams on June 22, 25 and 26.

### BRUCE A. CROMACK

*General Carpentry  
Restoration a Speciality*

Burrington Road

Tel: 337-4350

### FOREST MANAGEMENT

Planning \* Improvement \* Marketing

Many Local References

**WILLIAM D. UNDERWOOD ASSOCIATES INC.**

W.D. Underwood  
413-648-9560

Chapin Road  
Rt. 1 Box 176  
Bernardston, MA 01337

## DOUG WILKINS LEAVES TEACHING

by Sue Silvester

Doug Wilkins, a Heath resident for the past three years, will be visiting his Underwood Hill Road home, the old Hillman homestead, just on weekends beginning next fall. He will be leaving a six and a half year teaching career at Mohawk Trail Regional School to become an assistant manager in a family enterprise, a tool rental business in the Boston area.

While at Mohawk Doug has taught distributive education, business, mathematics and computer literacy courses, and he has been very active in the Teachers' Association, Career Team Planning and Teacher Center Advisory Council, to mention only a few of his many interests.

Doug will be missed as a full time Heath resident. He has served on the Heath Park Committee and on the Computer Committee. He still plans to be available every other weekend to continue calling for local square dances.

## PLAYGROUND NEWS

by Catherine Nichols

The Parks and Playground Committee has been busy this winter and spring with planning and fund raising.

We are planning to build a climbing structure around a large maple tree on the site. It will have slides, ladders and swings attached. The structure was designed by Deb Porter and Ken Rocke. Ken has constructed a scale model and is preparing building plans. We will be building it over the summer on weekends and welcome volunteers.

The estimated cost of materials for the structure was about \$1000. To raise the money we sent out letters to Heath residents and many summer residents who had not already contributed. The effort was very successful. We now have more than \$1500 and contributions are still arriving. Thank you all for your support. We will be able to do a lot with the additional funds.

In addition to building the play structure, we plan to landscape the site, install picnic tables and benches, and prepare it for other uses. There is a good possibility that we will get the assistance of a CETA work crew.

Work bees will be scheduled during the summer. If you are interested in working on the project, contact Deb Porter or Catherine Nichols.

### HELP WANTED

Part time - Work at home on the phone servicing our customers in your area. Earn up to \$5-10 hourly. Call 774-7652.



**The Baker  
Pharmacy**

**YOUR REXALL STORE**

Tel: 625-6324

Week Days 8:30AM - 9PM

Saturdays 8:30AM - 6PM

Sundays & Holidays 9AM - 12 Noon

52 Bridge Street

Shelburne Falls

## RON COREY RETIRES FROM MOHAWK

by Sue Silvester

Math teacher Ron Corey of Burrington Road will retire this June after 17 years at Mohawk Trail Regional School. Ron's teaching career at Mohawk began here when the school opened in 1968; before that, however, he taught at the high school in Charlemont. Although his college major was geology, Ron has taught all the science and math courses grades 7-12 at one time or another.

Born in Lakeland, Florida, he came to Heath with his family in 1940 and attended Arms Academy for one year. During that short stay in Heath he met his future wife, Ruth Sumner, then very young, while working for the summer on Anna Burrington's farm. His family returned to Florida, however, and Ron entered the Army after high school.

Farm work in New York led him back to Heath and, after his marriage to Ruth Sumner, Ron farmed until 1959 when he sold the farm in Heath and went back to college at the University of Massachusetts. It was then that his teaching career commenced in Charlemont.

Hunting, fishing and gardening will occupy much of his time when he retires, but Ron plans to spend most of his time doing carpentry. He is a member of the MTA, NEA and the Heath Union Church, where he serves on several committees. This summer he is planning to build new storm windows for the church.

Ron has enjoyed his long association with teachers and students and says that his most pleasant memories will be of "the students' faces when they finally understood something." We will miss Ron at Mohawk and wish him well in his retirement.



Ron Corey

## LADIES AID FAIR

The Ladies Aid Fair will be held on Wednesday, July 25, at the Community Hall. The sale opens at 3 PM. There will be fancy articles, toys, and food on sale as well as a "white elephant" table. Come, look around and visit with your friends.

## THE CAPE ON THE CORNER

by Sue Silvester

(Editors note: This article is the fifteenth in a series of articles on the older houses in Heath. The present home of Guy and Sue Silvester is located at the east end of the old Oxbow Road.)

Researching the history of an old house is a delightful task, and one cannot help being caught up in the contagious flavor of local history. The following details were compiled from information gathered by talking with Mary Kendrick of Charlemont and my aunt, Eleanor Shippee of Shelburne, as well as from Ed Calver's Heath, Massachusetts.

Although we believe it was built circa 1792 by Silas Allen, our red cape on the corner of Hosmer and Colrain Stage Road was first really called home by William and Dolly Fisk. Their daughter Dorothy married a Hall boy from Rowe in 1842, and they lived here operating a small farm and rake shop. In 1865 Aurel Hall sold the farm to Frederick C. Tanner.

The original cape consisted of four downstairs rooms with two sets of back to back fireplaces. One set remains intact today. The shallow bedroom fireplaces were for warmth, primarily, while the larger set served for cooking as well as warmth. A small narrow hallway extended from the front door into the interior of the house, as evidenced by the original floorboards, and has long since been removed to assign more space to the living room. Sometime while the Tanners owned it in the mid-1800's the kitchen, pantry and woodshed were added onto the original portion of the house, elongating it toward the north pasture.

On May 2, 1865, Frederick Tanner and his family moved to this house from Shelburne Falls, where he had ground knives in the cutlery. He had left for health reasons. Born in England in 1831, Frederick preferred country life; he and his wife Maria celebrated their 50th wedding anniversary in Heath at Sawyer Hall.

Frederick also owned two other farms in the area. One is now the home of Newland and Caroline Smith and the other, known as the George Sessions place, was located down their lane on what is now the Kinsman mowing with only a cellar hole remaining.

Frederick and Maria Tanner had a son, Oliver, and he married Martha Hitchcock, whose family had the saw-mill by the Branch Schoolhouse. When they were first married they lived on the Sessions place, then at the property that is now the Smith's. Ultimately they came to live in this house on the corner.

Mary Kendrick, who shared much of this family information with me, is the granddaughter of Oliver Tanner, and she remembers when her grandparents lived here in Heath. At that time there were many outbuildings on the property, including a carriage shed, outhouses, a larger ell containing the woodshed and a barn directly across the road on the property now owned by Dominic Mussachio. At the front west corner there stood a small shed for tool storage.

Mary shared some wonderful nostalgic memories with me, including the profusion of blueberries that grew on the opposite corner in the open fields, the peaceful, quiet pervading atmosphere of her grandparents' farm, the wide open pastureland that was between this house and the Schmidt place just up the road, and especially the good times mowing hay with her family. Mary's mother, Amy, was married at this house in a corner of the living room.

When Oliver Tanner died in December of 1940 and his wife died four weeks later, Mary's Uncle Homer Tanner maintained the place. The house stood empty for quite some time until it was purchased by Elbert C. Besselivres from New Jersey. He bought wood and other material to renovate the house, but never did do the work he intended to do, since his wife refused to move to the country from New Jersey.

Carlton P. Davenport of Shelburne Falls bought the house and land from the Besselivres, and it was he who sold "the farmhouse", as it has come to be known, to my aunt and uncle, Eleanor and Fay Shippee of Shelburne Falls on September 18, 1945.

When they purchased the farm for a summer home, neglect had taken its toll. The front door and frame were in such disrepair that they entered the house through a window. The first major project was the tearing down of a carriage shed that stood just in front of the house near the road. The outbuildings, already starting to fall down, were soon dismantled. Stone walls were revitalized; flower gardens were coaxed into blooming. My uncle planted geraniums in window boxes designed to camouflage structural inconsistencies; he completed the terrace, moved a small garage onto the property, dug a cesspool and ran pipeline from the spring in the woods to a holding tank in the cellar, the same one that we use today.

Summers with my aunt and uncle were not complete without a trip to the general store in Heath Center for a piece of penny candy or a picnic in the blueberry patch across the road. I recall that when a car went past the house you could hear it coming for miles. Everyone ran to the window for a look at "the car." The 38 years that the Shippees owned the house were happy times, filled with family gatherings and rides through the field on the "jitterbug" (the old Ford we all learned to drive on), annual trips to clean the springhouse, racoons that played mischief with the trash can at midnight, and catching trout by the bucketful in the beaver pond.

My uncle died on December 3, 1982 and it was on August 15, 1983, that Guy and I purchased the farmhouse from my Aunt Eleanor. It is with loving pride that we take up where they left off. I am grateful for the nostalgic memories of a happy childhood here, for they are the foundation of the happiness that my family and I have found here at the cape on the corner...



The Cape on the Corner 1945

(Photo from Sue Silvester)

## OXBOW THEATRE

by Eric Sumner

In the last couple of years many people may have seen the advertisements of the Oxbow Theatre Group, yet few know of the origins and activities of the acting company.

Founded in 1982 by Peg Whelihan and Margaret Carlson, the Oxbow Theatre is a non-profit community organization comprised mostly of local residents. While the group has in the past produced most of its shows at the Oxbow Restaurant, it welcomes all opportunities to perform for other audiences as well. The past two years have brought performances of Man of La Mancha, Little Mary Sunshine, The Fantasticks, Pippin, and Clarence Darrow to the area, in addition to several cabaret evenings. Anyone interested in becoming involved with acting, dancing, set construction or stage crew is most welcome.

Opening its third season with a benefit performance in Shelburne Falls in April, the Theatre Group will be producing one musical this summer; one that will require a lot of outside support for the actors and actresses. With a cast of students age 7-15, Cinderella - the original script - will be performed August 17 and 18, with a special show August 19 for children only. Those interested in becoming involved with the production or reserving tickets for the show should call 625-9476.

## CHURCH NEWS

by Amy C. Barry

The Heath Church is planning a special family Sunday on June 24. The service will begin at 11 AM with the dedication of the Sunday School room that has been recently carpeted and painted with money given in memory of Mildred Crowningshield and with proceeds from the Church's Talent Fund Drive of last summer. Following the dedication, there will be a service of music given by the "Spokesmen", a singing group from the North Leverett Baptist Church.

After this service all church members and friends are invited to bring a picnic lunch to the Fairgrounds for an afternoon of games and good fellowship. Grills will be available to cook hamburgs and hot dogs; coffee and cold drinks will be furnished. Everyone is asked to bring a dessert to share.

Vacation Bible School will be held this year the week of July 30 from 9 AM to 12 noon at the Rowe Community Church Parish Hall. All Heath and Rowe children, 4 years of age through sixth grade, are welcome. We are looking for volunteers to help with recreational activities, refreshments, and rides. Please contact Amy Barry (337-4411) or Lynn Dooley (337-5755) if you can help.

## PROJECT TEME

by Todd Sumner

On April 28, I had the pleasure of participating in a unique multidisciplinary study at Greenfield Community College. Project TEME is a one-of-a-kind learning experience synthesizing ecology, computer science, humanities, and laboratory research into one course. TEME the acronym for Totally Enclosed Modular Environments, and the program is designed to explore the possibilities of such environments, and make projections concerning their role in the future.

Now most of you are wondering: what the hell is a totally enclosed modular environment? A TEME is any man-made, totally regenerative ecosystem. The space shuttle is such an environment, and Project TEME chose the Shuttle for this study. A flight crew of seven people, men and women, were selected from a field of thirty volunteers. The flight crew spent seventy-two hours inside a Space Shuttle simulator where they were required to stand duty watches and perform other assigned tasks. Throughout the simulation the crew was monitored and rated on performance in stressful situations. Three days may seem like a long time to be cooped up in a 10' by 12' room, but the experiences along the way, and the knowledge which was acquired, were well worth the discomfort.

## LIBRARY LINES

by Jane Wishart, Librarian

We want to welcome back our summer friends and mention the Library hours: Monday, 7-9 PM; Wednesday, 1-4 PM; Saturday, 9 AM - 1 PM.

There is a great selection of newer books on loan from the Bookmobile as well as a number of newer titles of our own.

Reading is a wonderful way to help the sunny summer hours pass. Here are a few things you can do while reading: - Watch the peas grow; Get a tan; Let the cellar dry out; Get a sunburn; Catch up on the best-sellers list. - Bet you can think of a lot more!

A contest is planned and you could be a winner. Thank you to Michelle Howe for letting us display her gnome collection.

Please let us know if you have items or collections which you'd be willing to place on display. The summer reading program for children will be announced soon and we hope you will join in the fun.

## TAG SALE FOR BIBLE SCHOOL

To raise money to help cover costs of the Vacation Bible School, the staff of the School will hold a tag sale at the Rowe Old Home Day on July 14. If you have tag sale items to donate, you are asked to call Amy Barry at 337-4411.

Gordon E. Taylor d/b/a



### BLACKMER INSURANCE AGENCY

R. E. Blackmer  
Joseph J. Judd  
Marion J. Taylor

On the Mohawk Trail  
Shelburne, MA  
Tel: 625-6527

**KAYEN'S** Jewelers  
220 MAIN STREET GREENFIELD, MASS.  
01301



## LOCAL ARTIST EXHIBITS

by Sue Silvester

Julianne Hall Rocke of Swamp Road is Artist of the Month for June at the Mohawk Regional School Resource Center. She earned a BFA degree from the Art Center School of Design in Pasadena, CA in 1961 and an MFA from the Art League of NYC in 1967. Julie lived in the countryside of Guatemala for six and a half years, supporting herself through her paintings of the Indians. Nine of her major pieces are on exhibit now at the School; some are realistic, showing the Guatemalan Indians in their daily lives, and some are interpretive expressing the color and texture, beauty and dignity of the culture as a whole as seen through the eyes of an American artist.

Julie has taught life drawing workshops and has had private students in Vermont and Guatemala. While in Guatemala, she painted full time and has had two successful shows at the Instituto Guatemala American in Guatemala City in 1976 and again in 1980.

Her art exhibit may be seen weekdays while school is in session. Also available are small prints, in the form of greeting cards, which are on sale in the Resource Center until the end of the exhibit.

The artist resides in Heath with her husband and daughter Maya and is presently working on paintings for an exhibition in Washington, DC.

## BICENTENNIAL COMMITTEE REPORT

by Paul Lively, Chairman

At our last meeting we heard a report from Ed Calver concerning the bicentennial play that he has written. I won't reveal the details about the play except to say that Ed reports that the cast consists of about thirty townspeople and I think it will be an enjoyable experience for all. The performance is scheduled for the Friday evening of May 24, 1985.

It was voted to order medallions inscribed with the town logo. These will be on sale and for presentation to those who come with antique cars.

The Historical Society reports that their bicentennial calendar will be ready for sale by the first of July.

## TIME TO THINK HEATH FAIR

by Barbara Smith

August is almost here and this year on the 17th, 18th, and 19th it will bring the 67th annual HEATH FAIR.

The Heath Agricultural Society consists of a small handful of people who work very hard through the year to organize the Heath Fair. We encourage anyone who wishes to become involved with the Fair to help. People to contact on committees are: Advertising, Alice Wozniak; Exhibit Hall, Sophie Coe; Horse and Oxen Draw, Pat Smith. For more information contact Walt Gleason, President of the Agricultural Association, or Barbara Smith, Secretary.

To volunteer time or suggestions contact any of the above or you are welcome to attend any of our summer meetings. These will be held at 8 PM at the Community Hall on June 26, July 10, July 24, August 7 and August 14.

To help in our funding, the Society is sponsoring a horse drawing at the Fairgrounds on Sunday, June 17 at 1 PM. There will be two classes. Admission will be \$2.00 with refreshments on sale.

The Society has been busy planning entertainment and exhibits for this year's Fair.

For entertainment on Friday evening we will have David Green's folk music; Saturday's line up features the group Rosenshontz doing children's folk music for the entire family, the Eighth Avenue Revue Band, and a square dance at the Community Hall that evening. On Sunday there will be a Fiddlers' Contest.

Some of the special events this year include a tractor pull, sheep show, sheep shearing demonstration, cattle show, rabbits on show, a chicken barbecue, horse and oxen draw, craft demonstrations, and of course the exhibit hall.

### Alan L. Nichols Wooden Chairs and Tables

South Rd., Heath, Ma. 01346 Tel. (413) 337-6665



TRUCKING • EXCAVATING

### J. M. BLASSBERG CORP.

NORMAN R. SESSIONS  
President

5 MECHANIC ST.  
SHELburne FALLS, MASS.  
BUSINESS (413) 825-2531  
RESIDENCE (413) 337-5756

BOOKKEEPING  
SYSTEMS

TAXES  
TAX PLANNING

SMALL BUSINESS  
CONSULTING

### PAUL J. DABRODY, M.S.

Accountant

Jacksonville Stage Rd.  
Charlton, MA. 01339  
Phone: 413-337-4818

### PSW&B

PACKARD SAWYER WATERS & BELL  
INSURANCE AGENCY, INC.

377 Main Street • Greenfield, MA 01302 • Tel: 413-772-0251

### FRANKLIN-WARE

— SHELburne FALLS —

Fuel Oils  
Propane Gas  
Coal

Heating Supplies  
Gas Appliances  
Burner Service



## A CLASSIC TOWN MEETING

by D F Howland

Heath's Annual Town Meeting had something for everyone - a record budget, controversy over international issues, an oversight in procedure, winners and losers!

The evening of Monday, May 7, 1984 started out routinely with a special meeting to vote an appropriation of revenue sharing funds for the Town Highway Department costing \$1500. The discussion for the used paver and roller took two minutes. Town Moderator Ed Calver then went on to the business of the evening.

The results of the elections were reported by Town Clerk Catherine Nichols. In the contested seats, Ed Calver won the position of moderator over Eric Grinnell in a 72 to 60 vote and Linda Marcotte was elected to the School Committee over Sue Hunkler by 75 to 54. Richard Giarl was elected selectman replacing Ed Calver who did not run again. Bob Dane was elected to the Planning Board on a write-in as Don Churchill, the incumbent had not sought renomination. Other officers elected were Assessor Dennis Peters, Finance Committee member Guy Silvester, Library Trustee John Holdsworth, and Town Auditor Newland Smith.

Total costs for the town for FY 1984-85 exceeded a half million dollars for the first time. Questions were raised about increases for budget items - ballot clerks, police department, highway crew wages, Franklin County retirement - and no increase for cemetery mowing. Catherine Nichols explained that the number of elections expected in the coming year justified a small increase for ballot clerks. Police Chief Gowdy said the increase for his department was primarily for wages and defended the purchase of a motorcycle from available funds. The increase in wages of 7% for the Highway Department was supported as necessary to maintain a competitive position with other towns as well as to upgrade low wages. FinCom Chairman Dave Howland explained the rise in retirement costs as the result of an increase in the number of annuitants and increased funding liability to taxpayers of the retirement plan. The cemetery mowing account was not funded this year (normally \$200) because the trust funds were generating sufficient income. All budget items were approved.

Article 15 concerned promoting greater understanding between the U.S. and the Soviet Union by "pairing" Heath with the town of Lino. Spirited opinions were voiced by Amy Barry, who raised questions about the misuse and effectiveness of Heath's intentions by officials of the USSR, and by Rev. Lynn Dooley who opined that good faith effort was important to the individual's conscience and to international relations. The town voted 37 to 19 to support the "pairing" concept.

Two articles relative to subdivision regulations at Mohawk Beach Estates were withdrawn by the Planning Board. Attorney Byron Caplice explained that the Attorney General's office, which has to approve such matters, indicated the proposed articles constituted "spot zoning" and would not be approved. He expressed apologies and indicated that the wording of the articles could be revised to reflect a district concept that would be acceptable and probably easier to administer.

Other important appropriations were for work on the Community Hall for the bicentennial year and on the upstairs of Sawyer Hall to provide more space.

A Computer Committee was formally authorized to oversee the development of computerized services and a town nurse program was approved to replace the district nurse concept that was discontinued.

Heath's citizens voted down a motion to take a break in the meeting; it continued to 10:40 PM before adjournment.

## SELECTMEN'S APPOINTMENTS

The Heath Selectmen have announced the following appointments for the current year.

Chairman, Selectmen	Anne Steinbock
Secretary, Selectmen	Earl Warriner, Sr.
Selectmen's Clerk,	Catherine Nichols (Temporary)
Chairman, Board of Health	Anne Steinbock
Dump Committee Rep.	Anne Steinbock
	Earl Warriner, Sr.
F.C. Regional Transit Authority Rep.	Earl Warriner, Sr.
Road Superintendent	John Churchill, Sr.
Fire Chief	Earl Gleason
Police Chief	Lorin Gowdy
Forest Fire Warden	Earl Gleason
Civil Defense Director	Earl Gleason (Temporary)
Animal Inspector	Paul Lively
Veterans' Agent	Edward Russell
Town Council	Byron Caplice
Building Inspector	Steven Judge
Wiring Inspector	John Rossi
Inspector of Gas Piping	George Fournier
Registrars	Catherine Cromack,
Donald Dekker, Alice Woznack,	Bruce Cromack(Alt.)
Constables	Raymond Galipo
	Donald Dekker
Community Hall Committee	Alli Thane,
Teresa Pettengill, Dolores Churchill,	Teresa Peters,
	Cleon Peters
Police Officers	Lee Shepherd,
Guy Silvester, Dennis	Annear
Dog Officer	Michael Smead
Arts Lottery Council	Robert Gruen,
Judith Hibshman, Jean Holdsworth,	Richard Housner
Fred W. Wells Trustee	Jean Holdsworth
Zoning Board of Appeals Member	Alan Nichols
Parks Commission	Catherine Nichols
	Carol Sartz
Computer Committee	Paul Dabrody,
John Holdsworth, David Lavigne, Linda Marcotte,	Newland Smith
Conservation Commission	Ruth Law,
Carroll Stowe, Guy Silvester, David Thane	
Assistant Town Clerk/Treasurer	Alice Woznack

## LARRY'S of Shelburne Falls

CLOTHING

FOOTWEAR

## A.L. AVERY & SON

GENERAL STORE

Charlestown • 339-4915

## PLANNING BOARD REPORT

by John Holdsworth

At the eleventh hour, just prior to the Annual Town Meeting in May, the Planning Board was advised by town counsel to recommend that the town pass over the warrant articles that would have created some zoning relief for Mohawk Beach Estates. An opinion from the Attorney General's office stated that the zoning changes could only be achieved by creation of a separate zoning district in the Estates.

In accordance with this ruling, the Board has revised the proposed zoning amendment, with help from the town attorney. A question still remains about some of the wording, but the Board expects to have this resolved soon. The public hearing is now scheduled for Monday, June 25, 1984 at 8:00 PM in the Town Hall.

On March 3, the extension service sponsored a conference on groundwater protection. The speakers were: Walter Mulica, a geologist; Kurt Trampusch, a hazardous waste coordinator; and Alexandra Dawson, an environmental lawyer. Mulica indicated that circular buffer zones around wells were meaningless, since aquifers supplying wells were generally of irregular shape and contamination entering an aquifer could appear in a well located a great distance away. Aquifers moving in fissures in rock are highly susceptible to contamination, since little soil filtration is possible. Much of the water supplying wells and springs in Heath may flow through ledge rock and might easily be contaminated.

Trampusch mentioned that small businesses may be worse sources of pollution from hazardous waste materials than large businesses, since many state and federal regulations on handling and disposal of hazardous materials may not apply to the small user or are less strictly enforced for small operations.

Dawson discussed legal approaches and the use of zoning bylaws to protect groundwater in a town.

After the Annual Town Meeting, the Planning Board will be discussing ground water and the feasibility of trying to establish a program to protect ground water in Heath. Dates and agendas for the meetings will be posted and input from any interested individuals will be welcome.

**1785 - HEATH - 1985**

### Richard A. Sumner

Journeyman Electrician  
Mass. License #E22622  
Vermont License #J1245  
South Road, Heath  
413-337-4930

compliments of

**Wells Corner Country Store**

**CHARLEMONT 339-6632**

## NEWS FROM TOWN HALL

After the annual town meeting, the Board of Selectmen reorganized with Richard Giard taking the place of Ed Calver. Anne Steinbock continues as chairman and Tinker Warriner was elected secretary. New appointments were made for the coming year and are listed elsewhere.

**Highway Dept.** The heavy rains of late May have taken a toll on the roads, which will require considerable time in repair. Bids have been solicited for a replacement grader. Construction continues on the Colrain Stage Road as time permits.

**Special Town Meeting** A special town meeting will be held at 8 PM on Monday July 2 to appropriate funds for a replacement grader for the Highway Department. Also, unused funds must be transferred to accounts which have been overspent.

**Town Nurse** In accordance with the vote of the town meeting, the Selectmen appointed Sheila Litchfield to coordinate with the town of Rowe in the selection of a part-time town nurse.

**Circuit Rider** Since Shelburne has also voted to enter the Circuit Rider program along with Heath, Buckland and Colrain, plans are now underway to draw up a job description for applicants for the position of administrative assistant to be jointly shared by the four towns.

## TOWN OFFICE HOURS

(At Town Hall unless otherwise noted)

**Selectmen:** Mondays 7 PM

**Assessors:** Mondays 7 PM

**Town Clerk and Treasurer:**

Mondays 8 AM - Noon & 7-10 PM  
Wednesdays & Thursdays 8 AM - Noon

**Finance Committee:** As posted

**Planning Board:** 2nd Monday of month 8 PM

**Heath School Committee:** 2nd Tuesday of month 7:30 PM

**Tax Collector:** (at Sandra Gilbert's residence on  
Avery Brook Road)  
Mondays and Tuesdays 9 AM - 12 Noon  
also by appointment 337-4390

**Library Trustees:** 1st Monday of month 7 PM

**Library:** Mondays 7 - 9 PM Wednesdays 1 - 5 PM  
Saturdays 9 AM - 1 PM

**Post Office:** Monday through Saturday  
9:30 AM - 1:30 PM

**Dump:** Mondays 10 AM - 2 PM Wednesdays 1 PM - 7 PM  
Saturdays 9 AM - 5 PM

## CHARLEMONT TV, INC.

*Zenith*

Sales & Service

High Street, Charlemont

Tel: 339-6685

## TAX COLLECTIONS

by Sandra Gilbert, Tax Collector

I would like to thank all who have made any voluntary payments on their 1984 real estate taxes thus far. The generous amount of \$84,273.24 has been sent in so far and has been greatly appreciated by the town. This money has been of great help to our Treasurer and has reduced the amount of borrowing required at high interest rates.

Others who can pay part of their taxes now are asked to send in their payments as soon as possible. Amounts paid in now will be credited to your actual bill, when issued, and will decrease the amount due on your final bill.

The prolonged delay in getting the revaluation completed has hindered the town's financial position. It is expected the work will be finished soon so our bills can be issued. Upon completion of the revaluation, the HERALD will print a listing of the new valuations for the town and impact notices will be issued. Then will be the time to bring any questions to the Assessors' attention.

I would also like to remind those who receive exemptions or abatements that the Assessors plan to deal with such at the time of actual billing.

Thanks to all for your patience, understanding and generous advance payments thus far.

## COMPUTER COMMITTEE REPORT

by Newland Smith

At the first meeting of the town Computer Committee, appointed by the Selectmen after the town meeting, Paul Dabrody was elected chairman and Newland Smith secretary. Other members are John Holdsworth, David Lavigne, and Linda Marcotte. Henry Leuchtman, Doug Wilkins, and Catherine Nichols have volunteered to act as advisors when they are available.

The committee agreed that the basic system to be purchased should be the IBM PC since, in our price range, it offers the best capability of future expansion to take care of complete town records and accounts. Accordingly specifications on that system with optional accessories were drawn up and sent out for bid. The bid opening will be at the next meeting of the computer committee on June 13.

It was agreed that standard available software could be used for training key town personnel and for initial setting up of accounts. Committee members have already started to analyse town records and accounts to plan programs and to train town operators in using the computer system.

It is expected that the computer can be installed soon after the start of the fiscal year and that some of the Town Treasurer's accounting records will be started at that time. Other town functions will then be tackled and set up on the computer.

### BURNT HILL BLUEBERRIES

Pick your own - August 3 to 26

Weekends, all day - Weekdays, after 6 PM only

Jack Cable, Owner

Heath, Mass.

## FINANCE COMMITTEE REPORT

by David F. Howland, Chairman

The annual town meeting approved a record budget of about \$510,000 for FY 1984-1985. Fortunately a rise in state aid and funds from revenue sharing and "free cash" accounts are expected to keep taxes within Proposition 2 1/2 guidelines. In preparation for the annual meeting the FinCom met with Selectmen, major department heads and groups that had sizeable budget proposals. Considerable research and discussion is necessary to get at the facts and develop opinions. The Finance Committee appreciates the cooperation it has received in this process and believes that it leads to knowledgeable decision-making at the annual meeting.

Cash flow remains a critical issue until the new tax bills get on stream. Next year's budget anticipates the availability of \$20,000 in Free Cash and, while it seems all right on paper, the town has to have evidence it has the cash flow to get approval from the state Bureau of Accounts.

A special town meeting will be held within the next few weeks to balance accounts. We should have a better sense of the town's fiscal condition for FY 1983-84 at that time.

Bruce Cromack and Dave Howland appreciate the efforts of Linda Marcotte as a FinCom member and wish her well on the School Committee. They welcome Guy Silvester, whose business experience should be helpful to the Committee.

## FIRE DEPARTMENT NEWS

by Chief Earl Gleason

After a relatively quiet few weeks, the weekend of April 28-29 was extremely busy. The first call came at 11:15 AM for a grass fire on Burrington Road. At 12:15 PM men responded to a three acre brush fire on Avery Brook Road. The next run was to the dump on the 29th at 12:20 AM. Eleven men spent two hours extinguishing a refuse fire. At 2:45 PM two firefighters responded to cover the Rowe Station while Rowe was at a brush fire. The weekend ended at 9:30 PM with a call to assist the police with a controlled burn of a large quantity of contraband found at Dell.

On May eleventh, eight firefighters responded to Charlemont to aid at a forest fire.

One man took a generator and lights to Shelburne Falls and set them up on the Bridge of Flowers to light up the river search for a motorist who had gone into the river in Colrain. This occurred on May twenty-ninth.

Mutual Aid news includes the Tri-State field day held at the Pioneer Valley Regional School on May sixth. The usual excellent display of fire equipment and apparatus was on hand, as well as the demonstration of the helicopter rescue ambulance from Worcester. Following the roast beef dinner, a demonstration of a computer program designed to assist in dispatching equipment during Mutual Aid Emergencies was given.

Deerfield Valley Mutual Aid has had two meetings discussing the purchase of a new base station. Also one meeting was partially devoted to new equipment lists of the various departments.

The Mass. Fire Academy has scheduled a rural water supply school in Colrain on June 16 and 23. Heath has been requested to send a tanker to this school.

## MILESTONES

by Edith C. Royer

Pearle Tanner celebrated her 95th birthday on June 1. Pearle lived in Heath for over 30 years and was the organist at the Heath Church and Librarian for many years. She was also a major contributor to the Heath Sesquicentennial History in 1935. She now lives in East Charlemont with her son Richard.

Clyde Varney will celebrate his 95th birthday on June 15. Clyde lived with his wife Florence on Avery Brook Road from 1921 to 1969. He was the Heath Tax Collector for many years. He now lives in Turners Falls.

The HERALD sends all good wishes to both Pearle and Clyde.

\* \* \* \* \*

Aaron Michael was born on April 27 to Robert and Cindy Coates of East Charlemont. Aaron is the grandson of Robert Coates of Heath.

George Walker was born on May 2 to Laurie (Smith) and George Blue of Heath. George is the grandson of Barbara and Peter Smith and the great-grandson of Mr. and Mrs. Gilbert Smith and of Clarence Cutter.

Maya Jean was born on May 7 to Carmen and Russel Donelson of Colrain. Maya is the granddaughter of Luis and Eva Pazmino.

Amy Lynn was born on May 12 to Dawn and Walter Kenney of Rowe. Amy is the granddaughter of Ruth and Ronald Corey and the great-granddaughter of Rachel and Ralph Sumner.

Becky Rudd and Robert Nelson both of Heath were married on May 5. A reception was held at the Heath Fairgrounds.

Rachel DeLisle, 4 months old, daughter of Joanne and Robert DeLisle, died on April 17.

## MEMORIAL SERVICE

A Memorial Service for Timothy Smith will be held at the Heath Union Church on Saturday, June 30 at 5 PM. After the service, conducted by the Rev. William J. Wolf, a reception will be held at the home of Caroline and Newland Smith. All friends are invited to come and pay tribute to Timothy.

Return Undelivered Copies to:  
P.O. Box 54 Heath, MA 01346

POSTAGE  
U.S.



## CALENDAR OF EVENTS

June 17	2 PM	Horse Drawing, Fairgrounds Sponsored by Heath Agri. Soc.
June 24		Church Picnic, Fairgrounds
June 25	8 PM	Public Hearing on Zoning Bylaws Town Hall
June 26	7 PM	Rowe School Graduation
July 2	8 PM	Special Town Meeting
July 7-8		Balloon Festival & Crafts Fair Oxbow Motel, E. Charlemont
July 14-15		Rowe Old Home Days
July 15	9:30 AM	Joint Church Service, Pelham Lake
July 25	3 PM	Ladies Aid Fair, Community Hall
July 30-		Heath/Rowe Vacation Bible School at Rowe Parish Hall
Aug 3	9-12	Heath Historical Society Festival
Aug 4	11-4	Town Common, Heath Center
Aug 4	8 PM	Heath Historical Society Annual Meeting and Speaker.
Aug 4-5	10 AM- midnight	1st Annual Prof. Cowboy Rodeo, Charlemont Fairgrounds
Aug 17-19		HEATH FAIR
Aug 17-19		Production of <u>Cinderella</u> , Oxbow Theatre, E. Charlemont
Aug 19		Joint Church Service, Fairgrounds

## CLASSIFIED

HELP WANTED - Seasonal - Approximately July 30 to August 31. Harvesting and processing blueberries. Call after July 16, 337-4454 Jack Cable, Heath, Mass.

FRESH WINDS FARM Paul and Marcella Lively & Sons  
Excavating - Loam - Sand - Stone 337-4331

SEAVER AND WADHAM, Inc. Renovations, additions,  
kitchens, bathrooms, porches, solar greenhouses.  
Quality workmanship - reasonable prices 337-4866

MAPLE SYRUP ---- THE THANES Jacobs Road, Heath RFD  
Charlemont, MA 01339 337-4852

1985 HEATH BICENTENNIAL AUTO PLATES...Get yours now  
Only \$5.00 each . . . at Peters' Store or Town Hall

Additional copies of the HEATH HERALD are available  
at Peters' Store newsstand. . . . .

## PETERS' GENERAL STORE

The ONLY Store in Heath

ALL YOUR WANTS SUPPLIED  
WHAT WE DON'T CARRY WE GET

We Sell Alcoholic Beverages

\*\*\*  
Satisfaction Guaranteed  
\*\*\*

Raymond and Pamela Galipo Tel: 337-5501