



# HEATH HERALD

HEATH'S FIRST NEWSPAPER 35¢

## TO RIDE OR OVERRIDE VOTE ON JUNE 23

by Newland Smith

The first part of the 1987 Annual Town Meeting on May 9 left most townspeople in doubt as to the status of our next year's annual budget. Due to the state law on Prop 2 1/2 a town is not allowed to increase its annual budget, raised by taxation, by more than 2 1/2 percent over the previous year unless approved by a 2/3rds vote on an election ballot. The proposed 1988 budget, asking for \$27,984 above this limit, therefore required such a vote. Even though 93 voters were for this increase with only 64 against it, the 2/3rds majority was just missed.

The general opinion of those present at the May 9 Meeting seemed strongly in favor of such an increase and it was thought that the need had not been clearly presented to all who voted.

Also many have expressed the opinion that in the \$27,984 override requested there is not sufficient funding for proper road improvement, town building maintenance, capital expenditures and other necessary improvements that have been put off for too many years. An override of \$50,000 to \$100,000 would seem more appropriate. The Selectmen and FinCom, in their effort to keep tax increases to a minimum, felt that the override requested was the minimum to cover essential increases in expenditures on schools, insurance, solid waste while only allowing for normal road maintenance with no road improvements.

A \$27,984 override with the proposed budget will mean about a \$.90 per thousand increase in the present tax rate. No one likes to pay taxes, but if we wish to have the town services that most people demand, they must be paid for. The recent rapid growth in Heath's population has stretched the town's budget beyond its normal limit with demands on schools, more roads to maintain and plow in winter and other services. Unfortunately the growth in population has not generated a corresponding growth in the tax base. Many of the newer homes are being placed on small lots with corresponding valuation on buildings. Even so, it means that the town must pay for maintaining the road and for the schooling involved even though the new taxes generated do not cover the costs.

A few citizens have suggested that cuts in the budget could be made in other town services such as town officers' salaries. A careful review of Article 3 in the warrant shows that most proposed salaries remain nearly the same with a reduction for the assessors' chairman. However, the restoration of the position of assessors' clerk is necessary to handle the large amount of record keeping required in that office. The Town Clerk, Accountant and the

..... continued on page 3

## HEATH AGRICULTURAL SOCIETY NEWS

by Allie Thane

It is Fair planning time. Meetings of the Society are held on the second Monday at 7 PM every month. The dates for this year's Fair are August 14, 15 and 16.

The state has approved a grant of \$5000 for the construction of a roof and side rails for the cattle judging ring.

The Society has purchased a trailer to replace the existing one and it is already on the fairgrounds ready to be installed. The Briggs family will be returning as caretakers.

The food building will be renovated. Donations of lumber have been received from local members and, as soon as this is cured and dried, construction can begin; probably not for this Fair, but in the future.

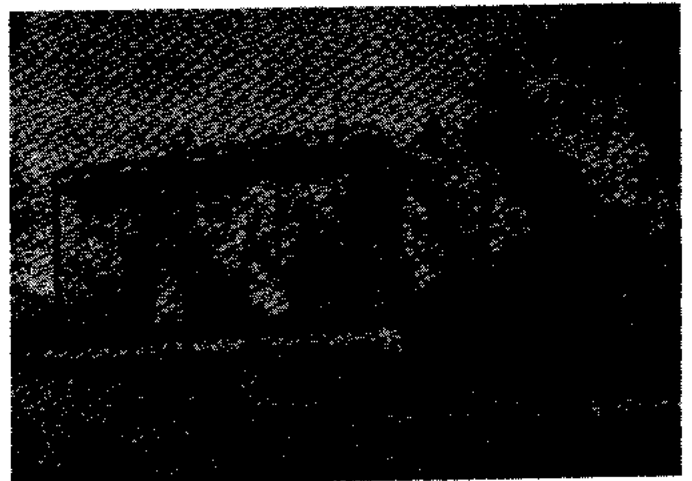
The horse-drawing area is receiving needed repairs on the pad and fences.

For the first time, there will be a large circus tent for eating, visiting, or just escaping from the rain that has been plaguing us for the past two years.

Some highlights!

Friday night will feature the 4 X 4 pull and fireworks; Saturday there will be a concert by two well known musical groups; oxen drawing on Saturday; horse drawing and fiddlers' contest on Sunday. This is just a brief summary of the many events being planned. Our August HEATH HERALD will have the complete program.

Come to the meetings and help with the planning! All are welcome.



As We Were in 1929  
Heath Grange Float in Fair Parade

(Staff Photo)

## MILESTONES

by Edith C. Royer

Dakotah Joseph was born on April 18 to Laura and Arthur Apostolou of Swamp Road.

Twin daughters, Amanda Mildred and Rebecca Ruth, were born to Joanne and Paul Fournier, on May 18. The twins are granddaughters of Joseph Giard and Ruth and Philip Fournier; and great-granddaughters of Mr. and Mrs. Rudolph Fournier all of Heath.

Cynthia L. Coates and Robert Coates of East Charlemont were married on April 18 in the Heath Church. A reception followed at the Community Hall. Cindy is the daughter of Robert F. Coates of Heath and Margaret Coates of Shelburne Falls. Bobby is the son of Mr. and Mrs. Allan Coates of East Charlemont.

Pearle Tanner observed her 98th birthday on June 1 at the Hillside Nursing Home in South Deerfield.

Esther L. Crowningshield died on April 10 at the Franklin Medical Center following a prolonged illness. She is survived by her husband, Frederick Crowningshield, a son, Arthur, and a daughter, Phyllis, all of Heath; also a sister, Dorothy Arno, of Rowe and two granddaughters.

## CARD OF THANKS

The family of Esther Crowningshield wishes to thank all who provided food, flowers, cards, money and donations in memory of Esther; the Reverend Kevin Pleas for his words of comfort to Esther and her family; Dr. Allan McClelland for his excellent care; the nurses on 3AB at FMC for all their care and concerns; to the oncology department at FMC for all their support.

Fred Crowningshield wishes to thank all those who came to the work bee and for all the food provided on those days.

God bless you all.

Fred, Arthur, Phyllis  
Crowningshield

## LETTERS

To my Heath Neighbors:

There is a line from King Lear that says, "Nothing comes from nothing." If the good people of Heath do not vote the override on the 23rd of June they will in effect be saying that they will not invest in Heath's future and that they care nothing for the welfare of the town. The school budget is up over \$30,000 this year. We (the people of Heath) have the lowest per capita expense per student in the nine town region and I expect probably one of the lowest in the state. We spend only 49% of the total town budget for schools. This again is the lowest in the area. We have negotiated a 5 year contract with the Town of Rowe which is extremely favorable to the Town of Heath while trying to address the discrepancies between the host school (Rowe), with 1/4 of the student population, paying for 3/4 of the shared budget.

While by law the town is mandated to pay for the schooling of the children, if the voters do not vote for the override other town functions will suffer badly and be morally bankrupt. No one part of the town government is more important than any other. If we continue to live in a fantasy land where we do not have to pay for the quality of life we enjoy, that same life will not be available because we have thinned out the services we so badly need.

No one wants to see taxes increase. The taxpayers of Heath must resign themselves to the fact though that there are precious few things in life that are free. Goods and services must be paid for, and that is reality. Most importantly to remember though is that there is no town official that benefits or enjoys the raising of taxes. You have elected the officers of the town to oversee the care of the town. You must trust in their judgment that this override is necessary or you must be prepared to recall them from their positions and fill those vacancies with representatives who can do a more competent job.

Thank you for your time.

Patrick W. Venneri  
Chairman  
Heath School Board

## HEATH PRECIPITATION

by Ralph Dickinson, Observer  
for Mass. Water Resources Commission

April precipitation was 9.58 inches; May precipitation was 1.04 inches.

Total precipitation for the first five months of 1987 was 20.10 inches. We had 10 more inches of snow in April making our total snowfall 120 inches for the season.

It has been the wettest April and the driest May that I have recorded in the past 20 years. Between April 4 and 6 we received 7 inches of rain which raised havoc with our roads.

## BED & BREAKFAST

Y'ALL COME

## Forest Way Farm

Route 8A

Heath, Massachusetts

413-337-8331



## HEATH HERALD

HEATH'S FIRST NEWSPAPER

Volume 9 Number 2	June/July 1987
Editorial Staff	Pegge Howland Caroline Smith
Editorial Assistant	Helen Nichols
Staff Reporters	Beverly denOuden Edith Royer Susan Silvester Alli Thane John Read
Advertising and Business	Terry Pettengill
Circulation	Newland Smith
Typography	

The HEATH HERALD is published six times a year in April, June, August, October, December and February  
SUBSCRIPTION RATE - One year, \$3.50 (payable in advance by check or money order)  
ADVERTISING RATES - Display ads: \$3.50 per column inch (Discounts on six or more insertions)  
Classified ads: \$1.00 per line.  
Send all correspondence to Box 54, Heath, MA 01346

## LETTERS

To the Citizens of Heath:

"Shall the Town of Heath be allowed to assess an additional \$27,984 in Real Estate and Personal Property Taxes for the Fiscal Year beginning July 1, 1987?"

On Tuesday, June 23, 1987 the polls will be open from 1:00 until 7:00 p.m. for a special election to vote on this question. We urge you to:

1. Go to the polls and vote June 23.
2. Vote "Yes" to raise additional taxes by \$27,984.
3. Attend the continuation of the Annual Town Meeting at 8:00 P.M. June 23 at which time the annual budget will be set by those voters in attendance. It is most important that your views be heard this year.

Since we have learned that there was some confusion about the ballot question in the election held in May, we offer the following reasons why we feel that raising this money is so important:

The largest area of increase in the budget which is responsible for the need to raise taxes is the elementary school cost. The \$39,000 increase in the total school budget is primarily due to added operational costs and additional children who enrolled at Rowe School. We have no practical choice but to pay for this increase. In fact, we still pay the lowest cost per pupil of any town in the area, all costs included.

The second most significant increase is a \$24,000 increase in the cost of providing insurance for the Town. The Selectmen have unsuccessfully tried to find alternatives. The only real choice is to go without insurance in some areas and risk a successful court suit. One such case without insurance might make an impact on our taxes that would be a burden to us all for years to come.

We are concerned about the ability of our residents to pay increased taxes. We have tried to cut our costs, hold the line or postpone action in most areas of the budget. On items where minor increases are planned, they are presented as a way to save money in the future. In addition, we are proposing to use \$47,000 from free cash to lower the amount to be raised by taxes. Examples of costs that the Selectmen have cut out of the budget are:

- repairing the roof on Sawyer Hall and the Community Hall
- painting the town buildings
- regular finishing of the floor in the Community Hall
- preventative maintenance of town equipment
- installation of dry hydrants for fire protection.

We are asking for a small increase for the maintenance of town roads. We feel that the highway budget is inadequate. Even with this amount of money, we will be unable to keep up with the deterioration of the roads. Because of the flooding this spring, the problem is even worse. We are making every attempt to get state and federal aid, but this will only help us on about 10% of the road miles we have. Furthermore, we will need as much as \$40,000 to cover our 12 1/2% share of the repairs even with state and federal money. A large part of the one-time increase in free cash due to vigorous tax collection will be needed for this purpose.

There is no money being asked in the budget for a town preschool.

The Selectmen and the Finance Committee have worked closely over the last several months to contain and lower costs. Each board has separately concluded that we need to raise additional taxes. The proposed budget increase of \$27,984 would require an increase of \$1.00 per \$1000 on the tax rate based on the old valuation or \$0.90 on the new rate (which will be approximately \$14.42 per \$1000, override included).

If you feel that there are certain areas in the proposed budget that should be reduced, please come to the town meeting and vote to reduce those items. Since most suggestions for reductions will not offset the large increase in the school budget, we will still need to vote for an override of Proposition 2 1/2. We are really choosing between raising taxes or giving up basic town services that most people depend upon.

If you can not arrange to vote on June 23, absentee ballots may be gotten from the Town Clerk, Karen MacDougall, on Ledges Road near the Town Hall until noon the day before the election.

If you have questions, there is an informational meeting scheduled for June 16 at 8:00 p.m.

The vote in May on this issue was approved by a clear majority of those voting. The required 2/3 vote failed by only a few votes. Your vote is important. Will you give us your support?

Sincerely,

Richard Giard, Chairman Heath Board of Selectmen  
Walter Gleason, Selectman  
Art Schwenger, Selectman

---

... continued from page 1

Treasurer/Tax Collector would receive small increases totalling only \$1300 as partial compensation for the larger amount of paper work and record keeping now mandated by the state. This is only a very small part of the requested override amount.

The Highway part of the proposed budget is only increased by enough to keep up with costs in materials and equipment with only a small cost-of-living increase for the crew. There is nothing in the new budget for road improvements as recommended by the appointed Road Task Force or for the town's share of any flood damage repair which can be significant.

The main increase in school costs is the \$35,000 to pay for the increase in the number of children attending the Rowe Elementary School. Since this is on a tuition basis under favorable contract terms to Heath, there is little possibility of reduction here. The \$5000 increase in the Tech School is also due to the larger number of students from Heath.

A \$24,000 increase in insurance premiums is similar to increases in most towns as liability rates increase due to more and more liberal court awards. Also in Heath, there has not previously been adequate coverage for some of the town officers and employees.

The closing of the present "dump" and setting up of the new solid waste transfer station and disposal costs require another \$10,000 increase in the budget. Even this will not cover all of the operating costs of the new system.

So with all of these demands for our town services, and without a significant increase in the tax base, there seems to be little alternative to the proposed override of \$27,984. Perhaps it should have been much larger.

So vote the Question on June 23 and attend the reconvened Town Meeting that night. The polls will be open at the Community Hall from 1 to 7 PM and the meeting will start at 8 PM.

## NEW EDUCATION LEGISLATION CHAPTER 188

by Susan Silvester

Massachusetts special education law, Chapter 766, was the forerunner of federal legislation to mandate equal opportunities for students with special needs. Another important law pertaining to the field of education was passed in Massachusetts in July 1985. Chapter 188 is a complex and multifaceted piece of legislation which deals with several aspects of education.

In the area of teacher recognition for professional achievement, Horace Mann Grants and Lucretia Crocker awards are given to teachers on a competitive basis. Last year Nancy Rillings of Ashfield, a former teacher at the Rowe Elementary School, was the only teacher in the Northwest Regional Area to be named a Lucretia Crocker Fellow. Her application was based on the elementary school exchange program between Sanderson Academy and a school in Mexico City. Nancy spent the year travelling to school districts across the state outlining the program and serving as consultant to other schools.

The Horace Mann grant money awarded to each school provides funds for teachers to engage in expanded responsibilities for staff and curriculum development. Professional development grants were also awarded to each school for the purpose of supplementing teacher salaries. In addition to the professional development grants, Chapter 188 also provided Minimum Teacher Salary Grants. This money was made available to increase the starting salary of teachers to \$18,000. In our school district the Ashfield-Plainfield and Hawlemont Schools as well as the Rowe Elementary School committee approved acceptance of this money. Since state funding for teacher salaries does not continue indefinitely, this has caused controversy in many towns.

The Equal Education Opportunity Grants (EEOG) give school districts currently spending below 85% of the average statewide per pupil expenditure an opportunity to increase their per pupil expenditure. School improvement funds are awarded to each school on a per pupil basis in the amount of \$10 per child. This money may be used at the building level to establish innovative academic programs and expand services to students. At Mohawk some of the money paid for a day long series of presentations and workshops by Shakespeare and Company, a drama group. Instructional materials grants were awarded to eligible schools for the purchase of textbooks and workbooks.

The last two areas of funding under Chapter 188 deal with special populations, pre-school children and the gifted and talented. The Early Childhood Grants give money to towns for planning and ultimately funding an early childhood education program. One such preschool program is already established in Charlemont. The Department of Education announced that funding of new programs would not be available this year. The Gifted and Talented Grants are intended to fund planning and implementation projects; our school district has received a planning grant and an implementation grant for the next academic year.

## ROWE SCHOOL DATES

The Rowe Elementary School will hold the graduating exercises at the Gazebo in Rowe on June 17 at 6 PM.

The last day of school will be June 19 - Field Day.

## 1987 HEATH GRADUATES

The HERALD extends its congratulations to the following Heath students who are graduating from their respective schools:

Graduating from the Rowe Elementary School are Nathan Ausikaitis, Caroline Barry, Valerie Belval, Steve Bigelow, Jeffrey Gilbert, James Herzig, Andy Howe, Theresa Shattuck, Joel Porter-deVriese, April Tanner, Luke Venneri.

Graduating from the Mohawk Trail Regional High School are Wendy Brewer, Bonnie Cobb, Nicole denOuden, Sheli Galipo, Glenn Gleason, Jessica Kain, Bernadette Shattuck, Larry Sherman, and Ree Sumner. Nicole denOuden was named to the National Honor Society.

Kenneth Thane was graduated from the Academy at Charlemont.

Arthur Churchill was graduated from the Franklin County Technical School.

Matthew denOuden received the Bachelor of Arts degree from the University of Hartford.

Todd Sumner was graduated from Amherst College, magna cum laude. He majored in English and will start teaching at the Academy at Charlemont in the fall.

John Mark Porter was graduated from the North Adams State College with a Bachelor of Science Degree in Business Administration.

Susan Silvester received her Doctor's degree in Educational Curricula from the University of Massachusetts.

## FRESH AIR PROGRAM

by Susan Silvester

Each year families in the Franklin County area open their homes and their hearts to children from New York City. This summer local families have the opportunity to take a child for a two week period beginning July 15.

Several Heath families have hosted a city child in years past and have expressed great satisfaction in being able to provide outdoor activities and a bit of country living for children who otherwise might never have an opportunity to swim in a lake, pet a cow or hike through the woods. Special excursions are not really necessary, explained one family, since the children are usually thrilled just to be part of normal family activities.

The area coordinator for the Fresh Air Program is Ruth Anderson in Shelburne Falls. Any family interested in hosting a child this summer should contact her at 625-9590.



## NEWS FROM THE ACADEMY

by Sara Wishart

The Academy at Charlemont is concluding another busy year with a variety of activities.

The annual spring concert was held May 7 at the Charlemont Federated Church. Junior and Senior choruses, as well as vocal and instrumental ensembles and soloists, showed the culmination of hours of practice under the direction of Academy music director, Jayne Dane. Among those appearing on the well received program were local Academy students Heather Gruen, Karen Venneri, Olga Peters and Sara Wishart.

In mid-May, 17 Academy biology students along with 20 staff members and Academy friends travelled east for a biology field trip. During the three day event the group viewed Harvard Museum's renowned zoological specimen collection, browsed at Quincy Market and Faneuil Hall, and enjoyed a special seafood dinner at a Gloucester seaport. A highlight of the trip was a six-hour deep sea cruise in search of migrating whales. The search was unsuccessful but smaller game was present during a study of tidal pools at Gloucester's Halibut Point.

With the end of the year quickly approaching, the class of '87 is becoming anxious for graduation day to arrive. Leading up to this event several special events were planned. On May 29 a faculty and senior class dinner was held at the Whale Inn in Goshen. On June 5 a dinner was given in honor of the senior class hosted by Headmaster and Mrs. Eric Grinnell at their home in Heath.

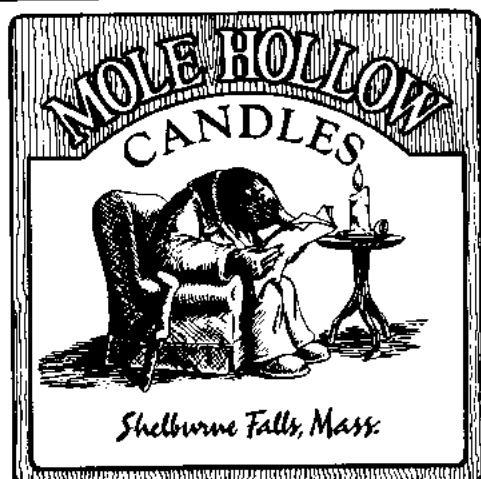
The students are looking forward eagerly to summer activities ranging from work to travel to lacrosse camp. Students may not, however, be looking forward as eagerly to the upcoming activity - final exams!

### BRUCE A. CROMACK

General Carpentry  
Restoration a Speciality

Burrington Road

Tel: 337-4350



Excellent selection of seconds  
at 40% to 80% off

In the center of Shelburne Falls overlooking the  
scenic glacial potholes  
Open daily 10 to 5

## MOHAWK TRAIL REGIONAL SCHOOL NEWS

by Tanja Davin, Grade 10

The 1986/87 year at Mohawk is almost at its end. For some the time is dragging; for others, who are fighting their way through chemistry unknowns, term papers and finals, there are prayers for just one extra week.

As the spring sports season comes to an end, the athletic teams are either finished playing or are playing their last few games.

Mohawk was honored to welcome Shakespeare and Company from Pittsfield. The organization presented a shortened version of *Othello* and spent May 14 doing workshops at the school. In addition to this, 50 students were chosen from their involvement in the school musicals to do some hands-on stage work with these outstanding professionals.

The Mohawk Trail School is proud to announce that it placed fifth in the "Celtics Challenge." This program involved a student contract which proclaimed that students signing the document would not take drugs or drink alcohol. A percentage of the students who signed the contract was compared to the percentage of students in other schools participating. There was also a form sent home to the parents; it had to be read, signed and returned to the school. Of all the schools in the state that participated, Mohawk placed fifth, having one of the highest percentages of students involved in the program. This certainly shows that Mohawk students care enough to participate in the program.

This year has been very exciting and productive. Every student at Mohawk will in some way be sad to see it end. There will certainly be few dry eyes at senior graduation.

### SALMON FALLS MARKETPLACE EVENTS

"Birds, Baskets and Bowls", a show for emerging sculptors, will be held from June 19 to July 19. Jayne Dane's hand woven baskets will be on display and Fred Burrington will show his carved wooden loons.

The next concert in the "Intimate Concert" series will be held on Saturday, June 27 at 7.30 in the inside show room. John Coster, songwriter, and Susannah Keith, vocalist, will perform original music. "Stories in the Dark" is a recording of theirs. Tickets in advance are \$5.00 and at the door are \$6.00. Wine and cheese will be served.

From August 8 through September the second annual "Fine Wood Furniture Show" will be held. A dozen furniture artisans will be showing their work and an opening reception will be held on August 8 from 7 to 9 PM.

Gordon E. Taylor d/b/a



### BLACKMER INSURANCE AGENCY

R. E. Blackmer

On the Mohawk Trail

Joseph J. Judd

Shelburne, MA

Marion J. Taylor

Tel: 625-6527

## CHURCH NEWS

by Paul Snyder

The imps of winter have retreated to their icy lair and the birds have called a mantle of spring over the land. Nature awakens to the call and boundless beauty fills our hearts with thanksgiving and praise to the Creator of all things. Busy hands repair winter's ravages and begin the planting of new life. Now is a good time to consider our relationship with God and take the action necessary to thank Him for the many gifts we have received.

The Adult Bible Study Group meets every Sunday at 10 AM. Junior Sunday School is taught at 11 AM and, for your convenience, a baby sitter is in attendance during the church service.

The Mohawk Trail Concert in the Heath Church, scheduled for June 27, will be preceded by 6 PM dinner in the Community Hall sponsored by the Church and prepared and served by our active volunteers.

The Community Hall will be in our service again on July 29 when the Ladies Aid will present their annual fair at 3 PM. We may be sure that the fancy articles and food will make this day a "must" on your activities calendar. The fair will be followed by a 6 PM dinner.

As previously noted, Pastor Pleas' last sermon will be given on June 21. The next few weeks will be a great time to go to church and share the love and fellowship that will sustain him in his next ministry.

The Youth Group will sponsor a car wash in June. Details are not complete at this writing, but will be given in the West County News and on local posters. Be on the watch for them!

The Church Growth Committee has become increasingly aware that the name of our activity is misleading. The number of people tithing and attending church is important, but our real purpose seems to be to involve ourselves in Christian fellowship to the community. We are now calling ourselves the Caregiving Committee. We are exploring methods that will best let us complement the truly Christian attitude of so many of our good neighbors. God will show the way.



**The Baker  
Pharmacy**

**YOUR RX ALL STORE**

Tel: 625-6324

Week Days 8:30AM - 9PM

Saturdays 8:30AM - 6PM

Sundays & Holidays 9AM - 12 Noon

52 Bridge Street

Shelburne Falls



Automobile and Truck  
Maintenance & Repair

**STEPHEN'S GARAGE**

HEATH, MA 01346

Stephen P. Bellisio  
(413) 338-6616

GM & ASE CERT.  
Master Mechanic

## LIBRARY LINES

by Alli Thane, Librarian

The warm weather is finally upon us and along with it comes the urge to sink our fingers into the dirt, to plant flowers to enjoy and vegetables to eat. Come to the library for garden books. We have several good ones, and Elsa Bakalar has donated a wealth of garden magazines.

I'd like to thank all the folks who have donated books to the library this spring. There have been several and they are appreciated. I was pleasantly surprised to find three large bags of novels from the DeLeeuws who have "The Open Door Bookstore" in Montclair, NJ and also have a home on Long Hill. This is the second time the DeLeeuws have given us this generous gift and we are grateful.

The audio books have arrived. These were purchased with money given by the Heath Council On Aging. Some of the titles are, Jane Eyre by Bronte, Born Free by Adamson, The Spy Who Came in from the Cold by LeCarre, some Agatha Christie's and many others.

## LADIES AID FAIR

by Edith Royer

The Heath Ladies Aid will hold its annual summer fair and sale on Wednesday, July 29, at 3 PM in the Community Hall. There will be a sale of fancy articles as well as a food sale. All are invited to come, look around, shop and visit with friends.

Following the sale, the Church will be serving a supper downstairs in the Hall.

*K.R. Jeweler*

17 Chapman Street • Greenfield, Ma. 01301

*Fine Selection of Watches & Jewelry  
Watch & Jewelry Repair*

**LYLE H. HALL, INC.**

Colrain, Mass.

**BUILDING LUMBER**

**HARDWOOD & SOFTWOOD SLABS**

compliments of

**Wells Corner Country Store**

CHARLEMONT 339-6632

## A MEMORY

by Carroll Stowe

I have a lot of good memories and enjoy recalling some of my past experiences. My memories become rather vivid when I get tired. As I drove home Saturday, the 9th of May, from the 7th annual plowing contest, I was tired and as I reached the extreme west edge of Colrain and the northeasterly edge of Heath to start up Heath Mountain, I was overcome by a truly pleasant memory.

This happened at a time when a group of neighbors got together to cut logs and get them out to help replace the barn the David Giard family lost to a fire. This was a big undertaking and took several days to complete.

The logs were cut on a Saturday and drawn out of the woods on Sunday and perhaps into the week following. I am a bit unsure about the days we worked. I was still in high school so it goes back a bit.

The wood lot that we worked on was just across the river at the foot of Heath Mountain. It was rather a good distance up to where the logs were cut. This was on Giard's property. This recollection took place at noon time on the day when the logs were being taken to the mill at Gadreault's. That mill has long since gone.

I am able to recall all of the men in this crew and I'm very proud to have been in the company of this group of super people; the late Francis Kinsman, Howard Thompson, George White. As best I can recall Wayne Hillman and I are the only ones who would remember this event.

I sat on a log with George White on my right side and Francis Kinsman to the right of George White. Our lunch pails were on the ground beside us. George White's dinner pail was to his left and Francis Kinsman's was to his left.

George ate some of his sandwiches and also some of Francis's sandwiches and when he reached in and took the last sandwich out of Mr. Kinsman's lunch box, Francis picked it up and closed it. George looked rather surprised and said, "What the hell have I been doing - eating your dinner too?" To which Francis replied, "Yes." George asked, "Why didn't you say something?" Francis told George that there was plenty for both.

George White wasn't easily embarrassed, but he was that day. It really tickled Howard Thompson when Kinney, as Francis was called, closed up his lunch box. Everyone had a good laugh over it and it was told around often and enjoyed by everyone who heard it.

There was no sign of a ford way through the river where the logs were taken out on Francis Kinsman's truck. This was in late December because I remember going to the movies after working all day with the logs. We went to celebrate New Year's Eve. It is quite possible that we worked at this logging project two weekends because I cut logs one day and helped haul them to the mill with Francis Stetson, Sr. another day. I do recall that my dad couldn't be there one day as he had to go after a load of molasses. So on Sunday he went with our grey Dick horse to skid logs so they could be loaded on a sled.

I cannot express myself enough to describe how proud I am to have had the privilege of being in that crew.

A pleasant memory of a good time for a good cause with the best of folk to work with.

Yours for pleasant memories.

## BILL WOLF AT EDS

Last fall, Dr. William J. Wolf, who retired as professor at the Episcopal Divinity School three years ago, returned with his wife Eleanor to live in the apartment on St. John's Road, Cambridge, where they started their married life 40 years ago and lived in for 13 years before moving. Bill reports, "The one object that hasn't changed is the toilet. It took 10 minutes for the tank to fill then and it still does."

The house had become known as "Bishops House" prior to the Wolf's first occupancy. It was so named because two of the Episcopal clergy who had lived there later went on to become bishops. The first to live there were Angus and Kitty Dun who were long time summer residents of Heath. Angus later became Dean of the School and then Bishop of Washington. Bill claims that when he first moved into the apartment, "we promptly de-mythologized the idea."

The Wolfs have been part time residents of Heath for many years. Bill first came to Heath in 1941 as a summer helper for Mrs. Paulina Drown, who regularly brought up students from the Episcopal Theological Seminary, to help drive her car and do chores for the summer. A few years later Bill returned on a more permanent basis and bought the house he now lives in on Branch Hill Road.

## RED CROSS BABYSITTING COURSE


by Sharleen Moffatt, R.N.  
Town Nurse


There will be a certified babysitting course offered to all interested children ages 11 to 14 this summer. It will be held at the Rowe Fire Station June 24, 25, 26 and 30. The classes will run from 1 PM to 2 PM on each of these days. These classes will be taught by Charlotte MacLaughlin and Sharleen Moffatt, R.N. There will be a five dollar charge to cover the cost of materials.

If you would like to attend, please contact Sharleen at the Rowe School or Charlotte MacLaughlin at the Mohawk Valley Health Education Center at 625-2503. Because of limited space, pre-registration is advised. If you have any further questions, please call me at the Rowe School, 339-4734.

at the Bridge of Flowers!

Come see us  
after the theatre  
for a coffee or a cone...  
...at McCusker's





# McCUSKER'S

## MARKET & DELI

SHELDURNE FALLS, MASSACHUSETTS

Quality Foods

OPEN DAILY 8 A.M. - 8 P.M.

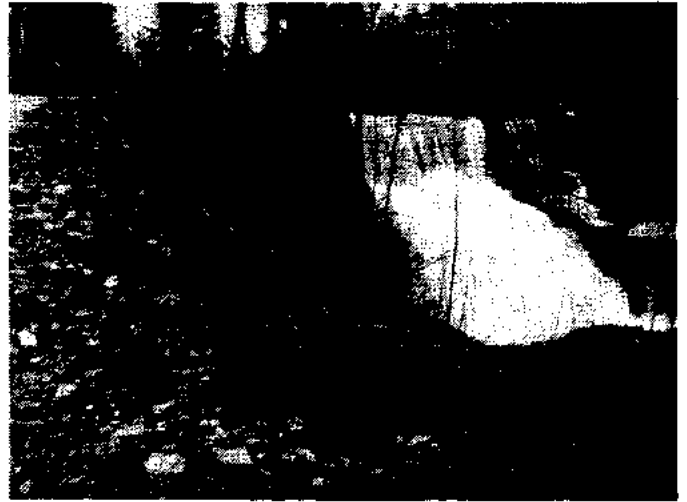


# A PHOTO ESSAY ON HEATH'S FLOOD DAMAGE

APRIL 1987



Avery Brook Road  
Only half gone  
(Photo by Michael Peters)



Judd Road  
and Lower Dam at Dell  
(Photo by Michael Peters)



Number Nine Road  
Below Murray Neuman's  
(Photo by Michael Peters)



Number Nine Road  
North End  
(Photo by Michael Peters)



Remains of Route 8A  
North Heath  
(Photo by Michael Peters)



Remains of Colrain Brook & Swamp Roads  
(Photo by Michael Peters)



## FARMING: HALFWAY AROUND THE WORLD

by Beverly denOuden

Dr. Bernard denOuden has recently returned from his second trip to Egypt. His focus on this visit was centered on a consultancy for land reclamation in Siwa, an oasis in western Egypt.

The city of Siwa is occupied by about 20,000 people of the Berber race.

There are plentiful springs in this region, some of which are encircled by wells dating from Roman rule. Land reclamation is tediously performed by hand, the principal tools being a grub axe to break up the chunks of saline top soil which must be removed to the depth of one foot. The soil is then transported from the area in pouch-like sacks which form a saddle on the back of a donkey.

With these reclamation methods, two men can clear 1/2 acre in one year's time. Once a farmer has reclaimed two acres, the land is his.

Egypt has only 3% arable land. Therefore, the government of Egypt in conjunction with Catholic Relief Services (CRS) has been fostering the reclamation project through a food for work project. Through this program there are now 3500 acres in Siwa under cultivation with a possible 50,000 acres available.

The staple foods provided for the reclamation workers satisfy their basic dietary needs. Most people diversify their efforts by raising vegetables and chickens.

Buck's involvement in this project includes a proposal for mechanization for topsoil removal. The proposal has been submitted to CRS and the Agency for International Development.

From Cairo, Buck flew to Bombay, India. To the north of Bombay the Behavioral Science Center from Ahmedabad is working in conjunction with CRS on a project with people from one of the lowest castes in India. This caste of people have been indebted for generations to a group of money-lender/land-owners who hire them as day laborers and have kept them in bondage through loaning money at 200% interest. It took nearly a year's effort by the behavioral scientists to persuade a group of 400 persons to engage in a project to free themselves from this labor cycle. The Indian government set aside 1000 acres of salt marsh near the sea for reclamation. The first work involved building dikes and dams to hold back the sea waters. The next effort, again through hand labor, was to dig irrigation trenches to the depth of one and a half feet and about three feet wide. The soil would be piled up between the trenches and upon this mounded strip fast growing, thorny trees are planted. These trees, which are undesirable for most any purpose, are now being harvested every three years. They are cut and stacked with precision, encased in a coating of leaves and mud, then burned to create charcoal. The charcoal making process must be monitored around the clock to produce a high grade of fuel which is then sold to foster the emerging independence of this caste.

Shortly before Buck's visit to this project location, 30 people had been mysteriously shot. There is resentment among the landowners since this project began because the day laborers have left the pool of workers and there has been a subsequent rise in labor costs. Local police were largely unresponsive, making no attempts at investigation. Amnesty International was called in and their team of people promised to pursue the investigation and inquiry into the massacre.

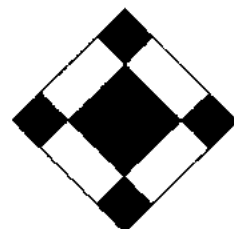
This project has been underway for three years. The 1000 acres are held cooperatively and it is hoped that within two more years the project will be self-sustaining and the people self-sufficient.

Much of India has endured severe drought. The monsoon season (June through August) has not come for three years running. The monsoons are vital to agriculture. CRS is working to alleviate the drought conditions through well digging projects. Men and women work together to dig wells which are 30 to 40 feet deep and 25 feet wide. The men break loose the soil with grub axes, bars and sledge hammers. The women carry the soil up and out of the site, balancing bowls of soil on their heads. Fifteen to twenty people working together can dig one well in three months. One well will supply water via irrigation ditches to 5 to 10 acres of land. A family of eight people can be sustained on two acres of land.

The principal crops in this project are rice in the flooded fields; wheat, vegetables, fruits and mulberry trees in the drained areas.

The ultimate goal of the wells in this region is to extend the growing season beyond the monsoon period into the dry season. The project also includes hygiene education and the introduction of natural methods of family planning.

Buck ended his journey in Bangladesh where he reviewed additional projects some of which were specifically targeted for women who are heads of households. More about these later.



WOODEN QUILTS  
TO WARM THE SOUL

**NARY A STITCH**  
SPECIAL ORDERS WELCOME

HELEN J. MACKIE  
HEATH, MA 01346 - 0026



TRUCKING • EXCAVATING

**J.M. BLASSBERG  
CORP.**

NORMAN R. SESSIONS  
President

5 MECHANIC ST.  
SHELburne FALLS, MASS.  
BUSINESS (413) 626-2531  
RESIDENCE (413) 337-5756

**QUALITY CARS & TRUCKS  
SILVESTER'S**  
Colrain Stage Road Heath, MA 01346  
413-337-4491

**SPECIALS**

1984 Toyota 4 X 4 Truck  
Low Mileage, Long Bed, 5 Speed  
Air Conditioning, Tilt Wheel, Window Package  
One Owner  
also  
1987 Ford F150 4 X 4 Truck

## SOUTH ROAD HOME

by Beverly denOuden

Recently I had a pleasant late afternoon visit with Patty Lentz and her son, Benjamin, on South Road in Heath. Patty acquainted me with the details of how she, her husband, Stephen, and Benjamin, age 4, found Heath. Ben meanwhile introduced their Johnny jump-ups, violas, June bugs, ants and other door yard environs.

The Lentz family spent two years looking for a country home around Chicago. Patty's brother led the way to New England and when the Lentzes came to Connecticut for his wedding they knew their country life was in the east.

Stephen found a job in Springfield and Patty started house hunting. A rest stop with Benjamin in Greenfield and one visit with a realtor to their saltbox in Heath and they found home.

Stephen, Patty and Ben moved to their Heath house in December 1985 and, as Patty relates it, "they learned how to use a wood stove real quick." Patty said the townspeople and neighbors offered "lifesaving" help on where to find cordwood and other practical assistance.

Stephen is now working as a shop mechanic at Don Lorenz in Greenfield and is very pleased with his position there. Benjamin has been attending the Heath playschool twice a week and Patty is learning about gardening and animals.

Some of our Heath children have enjoyed Patty's Christmas project at the Community Hall where she instructed youngsters on how to make Christmas ornaments and cookies.

Patty has found her degree in art education helpful in bringing her Arts Lottery grants to fruition. This summer she is going to be very busy. She will be working with Greenfield children dramatizing the book, "Where the Wild Things Are."

Also Heath will again benefit from Patty's grant award when she and Bonnie Wodin conduct a workshop on the use of natural dyes. This workshop will last four or five days beginning with the collection of items from our natural surroundings to be used in the dye making. Each individual in the workshop will then be using the dyes to make their own woolen tapestry. The workshop is free for the townspeople of Heath and the schedule will be announced on the local bulletin boards and in the newspapers.

Patty remarked that they had never heard quiet before they came to Heath. The Lentz family has definitely picked up one of the things we all love about our town.

Welcome, Stephen, Patty and Benjamin.

### A.L. AVERY & SON

>>>>>>>><<<<<<<<

GENERAL STORE

Charlemont • 339-4915

### CHARLEMONT TV, INC.

Zenith

Sales & Service

High Street, Charlemont

Tel: 339-6685

## POPULATION EXPLOSION IN HEATH

Town Clerk Karen MacDougall has been working steadily at the computer entering and compiling the 1987 street list. This will be extracted from her CENSUS87 database which contains many statistical facts on all Heath households such as names of all persons in each house, birth dates, voter registration information, dogs, school information, etc.

The official town street list will soon be made up from this data and copies can be obtained from Karen at a charge of \$1.50 each.

Of immediate importance is the fact that the listing shows that Heath now has a population of 610 people - up almost 20% over the last official state census in 1985. Also of interest is the fact that 215 of our residents are under 18, with 71 children under the age of 5 years. There are 201 households of permanent residents in town.

With a continuing growth rate like this, it is apparent that Heath school costs will continue to rise and will certainly require serious planning on the part of both the School Committee and the Planning Board.

### FRANKLIN-WARE

— SHELBURNE FALLS —

Fuel Oils  
Propane Gas  
Coal

Heating Supplies  
Gas Appliances  
Burner Service

### FOREST MANAGEMENT

Planning \* Improvement \* Marketing

Many Local References

WILLIAM D. UNDERWOOD ASSOCIATES INC.

W.D. Underwood  
413-648-9560

Chapin Road  
Rt. 1 Box 176  
Bernardston, MA 01337



Briar & the Rose

Lingerie & Fine Clothing  
by Catherine Nichols

Wooden Furniture  
by Alan Nichols

Daily Hours: Tues., Thurs., Fri., Sat. 10 - 5  
Sunday 12 - 5

Salmon Falls Market Place  
Shelburne Falls, MA

## TOWN MEETING TO BE CONTINUED

by Herald Staff

A large crowd of almost a hundred citizens turned out on Saturday morning, May 9, for an eventful meeting to vote on the town warrant and to learn that the election vote of the previous day did not carry the required two-thirds majority to override Proposition 2 1/2 necessary for the proposed budget. (It received only 59 % of the votes cast)

The meeting was called to order by Moderator Calver who was retiring after 13 years in that position. After he had called for a report on the town election, the new town officers were sworn in by Town Clerk Catherine Nichols. The retiring Moderator then turned the meeting over to newly elected Moderator Doug Wilkins.

The first order of business was an expression of appreciation from Bob Gruen for the many years of service given by Ed Calver to the Town. This brought a long round of applause from the meeting. The new Moderator started with the election of other town officers who were nominated from the floor.

Warrant articles were then taken up starting with the omnibus budget, Article 3. Richard Giard, reelected as Selectman, presented a motion to pass over this article since the new budget was based on obtaining the \$27,984 by the 2 1/2 override vote. His motion included continuing the annual meeting on June 23 in order to hold another election on the override. This brought a long round of discussion on the override and the necessity for obtaining it. It was clearly brought out that, even with the proposed budget, town services will be extremely limited. The increases in school population, higher cost of insurance premiums, the cost of closing the present dump and opening a new waste transfer station are the main reasons requiring the increase. It was further brought out that the need for better roads and the cost of repairing the recent flood damage are not taken into account even with this requested override. Without the override Heath could be closed out from the Rowe School due to lack of tuition payments and roads would deteriorate even further. Although there was concern expressed over rising expenditures, the general trend of the discussion seemed to favor the need of an override, even though it would mean a rise in the tax rate of almost a dollar per thousand. The motion to continue the meeting on June 23 was then easily passed.

Seventeen other warrant articles were then taken up and most of these passed with only minor discussion. An article to discontinue a portion of the old Ben Road was passed over on a motion by Selectman Walt Gleason, since he had found that this had been voted in 1958.

The article to authorize the selectmen to enter into a twenty-seven year contract with Fluor/VICON for the disposal of the town's solid waste was reworded by Selectman Richard Giard since it had already been voted at the January 13 town meeting. The reworded article, which was passed, allowed the Selectmen to implement the cost incurred under the new contract. This brought up some discussion on how the trash would be handled, the location of the transfer station and users' fees.

An article to authorize borrowing to cover Heath's share of the cost of closing the present landfill was questioned and not recommended by the Finance Committee since there was no dollar limit on the amount. Selectman Giard explained that the final cost

was still waiting for the DEQE to issue their final requirements for the covering. The article was passed by a 32 to 22 vote.

An article to accept a state grant for the operation of a public pre-school was passed with little discussion when it was brought out there would be no obligation to continue the school after the first year and that no transportation would be involved.

An article to change the date of the annual town meeting back to an evening meeting brought much discussion and was finally defeated by a 41 to 19 vote. The Selectmen had felt that a Saturday morning meeting would be good if volunteers could be found to organize a noon time lunch. However, since no volunteers appeared this year, they recommended a return to the evening meetings. The large attendance at this year's morning meeting thought differently, but volunteer food organizers are still sought for 1988.

Soon after 11 o'clock Moderator Wilkins recessed the meeting to continue at 8:00 PM on June 23 when a new election of the override question will have been held and the budget article will be voted.

## ROADS SCHOLARS

by Alastair Maitland

Towns, like universities, are made up of many disparate elements. Dr Robert Hutchins of Chicago once remarked that his institution was held together chiefly by a central heating system. And Dr Clark Kerr of Berkeley thought that if there was any one unifying force in his university it was a common concern about the availability of parking space. Had either of them been a Selectman of a New England town rather than a college president he might well have identified the state of the roads as the issue on which his townspeople are the most likely to find common ground.

So it is scarcely surprising that the town roads should have been one of the topics chosen by the Heath Selectmen for study by an ad hoc Task Force appointed by them.

The Task Force members (Tom Lively, Stephen Belitsos, David Brooks and Gerard Gilbert), appointed earlier this year, completed their initial study with commendable speed, submitting a preliminary report to the Selectmen on March 31, which is to say exactly four days before the Flood. If therefore in a strictly literal sense the Task Force's report can be described as ante-diluvian it is no less valid in its broad initial findings, which will surprise nobody. There is much to be done to rebuild our roads and to maintain them in reasonably decent shape in the years ahead. And all this will cost money. If there has been neglect in the past, we are all to blame. It is the direct consequence of our persistent collective parsimony.

The Selectmen, whose time has been taken up by the aftermath of the Flood, are still considering the Task Force's preliminary report. Meanwhile, we are left to ponder the financial implications of this and other Town matters that are dealt with elsewhere in this issue of the HEATH HERALD.

### Richard A. Sumner

Journeyman Electrician  
Mass. License #E22622  
Vermont License #J1245  
South Road, Heath  
413-337-4930

## SELECTMEN'S REPORT

by Richard R. Giard, Chairman  
Heath Board of Selectmen

The month of April proved to be a very busy time for the Selectmen especially with the ongoing process of trying to work out a balanced budget. This we could only do with a Proposition 2 1/2 override for \$27,984 which we are requesting (see related article).

On April 4 we had heavy rains that washed out large portions of roadways on three of our major out-of-town roads, Avery Brook, Burrington Hill, and Dell Roads. The Long Hill section of Rowe Road was totally gone from Michael Smead's down to the brook by Mohawk Kennel. Rowe Road west of BA also received heavy damage as far as the Rowe town line. That road is still very narrow but passable. Too many roads were damaged to name all, but we have a list with all of the damage identified. Altogether there are over 50 sites of storm related damage marked by federal and state representatives. We have seven sites along brooks where shoulders of the roads were undermined, causing safety hazards. These have been repaired under Soil Conservation Service aid with 100% of the cost reimbursed.

We have contacted our local state representatives, Senator Oliver and Representative Healy as well as Senator Kennedy, Senator Kerry and Representative Conte for support and assistance in getting funding for repairing this road damage. As of now, all roads are open and passable, if not repaired. A few of them have been re-graveled.

On May 17 the Board of Selectmen appointed Guy Silvester Police Chief. We would like to thank Lorin Gowdy for his years of service to the Town as Chief of Police. We commend him for his dedicated effort and we recognize the personal risk that he has taken each time that he performed in the line of duty on behalf of the citizens of Heath.



## NEW ENGLAND FORESTRY FOUNDATION

*Forest Resource Management*

offering a program of complete  
**Forest Resource Management**

plus

permanent forest conservation  
through our  
**Memorial Forest Program**

**Mary K. Wigmore**  
**Resident Forester**  
RD No. 1, Box 215  
Williamsburg, MA 01096  
(413) 628-4594

For more information, please call our  
Main Office at: 85 Newbury Street  
Boston, MA 02116, (617) 437-1441

**Professional Forest Managers since 1944**

## SELECTMEN'S APPOINTMENTS

The Heath Selectmen have announced the following appointments for this year.

Chairman, Selectmen  
Secretary, Selectmen  
Selectmen's Clerk  
Chairman, Board of Health  
Dump Committee Rep.

FRTA Representative  
Road Superintendent  
Fire Chief  
Police Chief  
Forest Fire Warden  
Civil Defense Director  
Animal Inspector  
Veterans Agent  
Town Counsel  
Building Inspector  
Wiring Inspector  
Plumbing Inspector  
Registrars

Alternate Registrars

Hall Committee

Police Officers

Fred W. Wells Trustee  
Zoning Board of Appeals  
Member

Parks Commission

Computer Committee

Conservation Commission

Assistant Town Clerk  
/Treasurer  
Historical Commission

County Planning Rep.  
County Advisory Board Rep.  
Licensing Board

Richard Giard  
Art Schwenger  
Karen MacDougall  
Walt Gleason  
Walt Gleason  
Richard Giard  
Art Schwenger  
John Churchill  
Earl Gleason  
Guy Silvester  
Earl Gleason  
Earl Gleason  
Paul Lively  
Eugene Balazs  
(no appointment)  
Steven Judge  
John Rossi  
(no appointment)  
Catherine Cromack  
Alli Thane  
Theresa Pettengill  
Bruce Cromack  
Catherine Nichols  
Lynn Miller  
Sheila Litchfield  
Dolly Churchill  
Karen Brooks  
Dennis Annear  
Carl Herzig  
Melinda Herzig  
Russell Dennison  
Jean Holdsworth  
Carol Sartz

Carol Sartz  
Catherine Nichols  
Deborah Porter  
Veronica Smead  
Doug Wilkins  
Catherine Nichols  
Linda Marcotte  
Newland Smith  
Henry Leuchtman  
Ruth Johnson  
Carroll Stowe  
Dawn Peters  
David Thane  
Bill Lattrell

Alli Thane  
Bill Thane  
Jayne Dane  
Alan Nichols  
Esther Dickinson  
Edith Royer  
Walter Gleason  
Richard Giard  
Art Schwenger

## Howard Crowningshield

Building & Remodeling

Tel: Heath 337-4406  
P.O. Charlemont, Ma. 01339

## REPORT FROM THE TAX COLLECTOR/TREASURER

by Linda Marcotte

The first batch of 1987 Motor Vehicle excise bills were mailed at the end of April. The following is some comments on motor vehicle excise bills in general.

The motor vehicle bills are prepared and printed by the Registry of Motor Vehicles. The information on the bills is taken from the information on everyone's registration form.

The motor vehicle excise tax bill is due 30 days from the date issued (mailed). If you do not pay the bill a demand will be mailed. Interest is charged at 12% for each day past due and the demand fee is now \$5.00. This is a lot of extra money that can be saved by paying the bill on time. You should remember to return a copy of the bill with your payment so that it is entered on the collector's books properly and keep the other copy for your records. If you want a receipt you must return both copies of the bill with a stamped, self addressed envelope.

If the mailing address is incorrect on your bill, when you renew your registration please make sure you note the correct mailing address where indicated on the form. (Example: if you live on Jacksonville Stage Road in Heath but your mailing address is Jacksonville Stage Road, Charlemont, MA 01339, etc.).

If you feel the value on the vehicle is incorrect or if you no longer own the vehicle listed, you must contact the Heath Board of Assessors for an abatement. You should do this as soon as you receive the bill. The Assessors and possibly the Registry are the only ones who can reduce the amount owed. If you saw the Assessors last year about a problem with a bill and this year the bill is still wrong, you must see them again. Don't assume a bill is abated until you receive the official Notice and Certificate of Abatement (green State Tax Form 146) completed and signed by at least two Assessors. Please don't ignore a bill. A demand will be issued if the bill is not abated in part (and the balance paid) or abated in full. If you paid a bill in full before receiving the abatement, a refund will be issued as soon as possible.

Occasionally, someone says that they never received the first bill. Every attempt is made to see that the bills are forwarded (and the tax collector informed of the new address) or returned to the tax collector as undeliverable. Unfortunately, the laws are written with the town almost always winning. It is felt that if you have a vehicle registered, you are aware that an excise tax bill will be due and if one is not received, you should go looking for it. The problem with that is that motor vehicle bills are not issued at any one time. Therefore, if you have a registered vehicle over six months ago, for which you have not received an excise tax bill, you might want to check with the Assessors or myself to see if a bill has been issued.

I am now working at home as I mentioned in my last report. I have a box at the Town Hall where payments can be dropped off or, if you do come to the house, please try to bring a check or cash for the exact amount owed. I very seldom have enough cash available to make change. My hours are Monday, Wednesday and Thursday afternoons from 1:30 to 5:00. If these hours are not convenient, please call to make an appointment.

## FINANCE COMMITTEE REPORT

by David Howland

The overriding concern of the FinCom is the tax payer of Heath. Permit us to try to allay some of the anxiety associated with the override vote on June 23.

First, it appears that for FY '87, the current tax year, taxes should be nearly the same as last year, FY '86! This situation is largely due to the building of new houses and home improvements that offset the increase in the tax levy for those years. Let's take some specific examples of parcels that have not been altered since the last valuation. For instance the FY '86 tax rate was \$18 per thousand valuation; for FY '87 we estimate it to be \$13.10 based on the new valuation data.

1.	FY '86	FY '87
	\$ 55,500 valuation	\$ 77,400 valuation
	x .018 tax rate	x .0131 est tax rate
	\$ 999 tax	\$ 1,014 tax
2.	\$ 88,600 valuation	\$120,500 valuation
	x .018 tax rate	x .0131 est tax rate
	\$ 1,595 tax	\$ 1,579 est tax

The tax levy for next year, \$447,005, requires an override of \$27,984. Using data we know of at this time, the estimated effect on the two properties above is:

1. \$ 77,400 '87 valuation	2. \$120,500 '87 valuation
x .01414 est '88 tax rate	x .01414 est '88 tax rate
\$ 1097 est '88 tax	\$ 1704 est '88 tax
1014 est '87 tax	1579 est '87 tax
\$ 80 increase/yr	\$ 125 increase/yr

If one considers the amount of these increases over FYs '86, '87 & '88 it seems a reasonably modest amount, albeit that some will find any increases a burden. All that we are trying to show is that elected officials and department heads are trying to hold taxes down while they cope with rising costs and expectations. The FinCom supports their efforts to bring some degree of management to the Town - computerization and record keeping, capital equipment funding, road maintenance, public safety and dump management. We also want to encourage the people of Heath to participate in their government.

For FY '88, the override year, we have proposed using \$47,000 from Free Cash to reduce taxes. Never before have we used so much, nor have we had it available to do so. The Tax Collector's efforts in recovering past taxes has made this possible. The override will raise the levy limit and help us adjust to future years when we probably will not have that much again. In summary, we want to be sensitive to the taxpayer's ability to pay, yet recommend a budget that is reasonable and in the best interests of the town.

**LARRY'S**  
*of Shelburne Falls*

CLOTHING



FOOTWEAR

## PLANNING BOARD REPORT

by Robert Dane, Secretary

Our revised Subdivision Regulations are almost complete. We are waiting for final comments from the County Planning Office before assembling the final document. We are scheduling a public hearing for July 20 as part of the process of adopting the Regulations. We hope all interested citizens will attend the hearing to give us any input or ask any questions about the proposed Regulations. Official notice of the hearing will be posted at Sawyer Hall and Peters Store, and will appear in the Greenfield Recorder two weeks before the hearing. If anyone would like a copy of the Subdivision Regulations before the hearing, please contact me or Tom Lively.

At our June 1 meeting we met with the Planning Board Task Force; Liz Kidder, the County Planner; Gwen Hallsmith, County Planning Department; and Susan Wright, our Shared Administrative Assistant. At this meeting we discussed applying for a Strategic Planning Grant. This grant could be used to hire a consultant to help us map the Town, and to help formulate updated Zoning Regulations based on the maps and the results of the surveys we have done. An update of the Zoning Regulations could focus on backlot development, cluster development, phased development bylaws, and other tools to help control development and thus retain the rural character of Heath. This project will take a great deal of work, and a professional consultant will be of help both with expertise in the area of planning issues and with the legwork necessary to complete such a project. Our next meeting is on June 15 at 7 PM when we will discuss the particulars of the application which is due July 15. Susan Wright and the County Planning Office will be doing the actual writing of the grant application.

This month we are welcoming a new member to the Planning Board, Bob Gruen, who will replace Sue Gleason. We would like to thank Sue for her ten years of service on the Board, and for all her work and good ideas.

## POLICE REPORT

by Chief Guy Silvester

The Heath Police Department has made some changes that will allow us to provide better service to the Town. First, a new phone system is being installed during the first week of June. The new number is 337-4901. The number will be posted in town and also appear in the local papers. Secondly, the following officers have been appointed to date: Dennis Annear, Russell Denison, Carl Herzig and our first female officer, Melinda Herzig. Third, regular patrols are being conducted on a weekly basis. Emergency assistance is also available when needed.



BALD  
MOUNTAIN  
POTTERY

STONEWARE & PORCELAIN

Sarah Hettlinger  
South Rd. Heath, MA 01346 (413)337-4496  
Salmon Falls Marketplace  
Shelburne Falls, MA (413)825-6353

## HEATH CONSERVATION COMMISSION

by Bill Lattrell, Chairman

As expected, the Conservation Commission has been very active during the past two months. Several requests have been made of the Commission during April and May by property owners to determine if areas where construction or change of use was to take place were wetlands. The Commission invites such requests as it saves everyone time in the long run. Town property owners are reminded to please contact the Commission if there is any chance that construction or other changes might take place in or near (within 100 ft. of) a wetland. Please call Bill Lattrell at 337-5792.

One Request for Determination was filed by William and Lenore O'Connell of Colrain Brook Road. It was determined by the Commission at a public hearing on May 28 that the proposed construction was within the buffer zone of a wetland, but would have no effect on the wetland. Therefore a positive determination was given and construction was permitted to begin.

The Commission also has witnessed and received complaints about numerous violations of the Wetlands Protection Act in the Mohawk Estates area. The Commission discussed the issue and decided it would be best to contact the officers of the Mohawk Estates Association. The officers will be invited to our next meeting on June 18. It appears the violations have occurred because property owners do not know about the Wetlands Act. The Commission felt that this will give us a chance to explain the Act, its ramifications and purposes. Such a meeting will, hopefully, produce a positive, responsible relationship between two bodies that will have to work very closely together in the future. Much of the Mohawk Estates area is protected under the Mass. General Laws, 310 C.M.R. (Wetlands Protection Act) and, therefore, we are very concerned.

On June 4 the Commission did its first of six site visits to the wetland replication site on Lot 2A of the H.T. Associates property. According to the Order of Conditions a 4700 sq. ft. filling was allowed and a 4700 sq. ft. replication was to take place. The Order calls for two visits a year over the next three years to assure that the replication was completed and working properly. The Commission was disappointed to find that the property owners had not yet complied with the Order of Conditions. Neither the filling nor the replication had taken place yet. The filling was necessary to insure that a 50 ft. distance from leach field and septic system to the wetland is present. Currently the Commission is negotiating a timetable to assure that the work will be done expeditiously and according to the Order of Conditions. The result of this negotiation will be reported in the next issue of the HEATH HERALD.

**Gilmore  
and Watters**  
INSURANCE AGENCY INCORPORATED

377 Main Street • Greenfield, MA 01302 • Tel: 413-772-0251

## FIRE DEPARTMENT NEWS

by Chief Earl Gleason

Congratulations!

No emergency calls were received by our red phones during April and May although we did direct the Charlemont Ambulance to a location in Heath and two firefighters assisted in loading the victim on May 9.

The big emergency was the flood of April 4. The rains came and about 8.30 PM the Chairman of the Board of Selectmen declared a state of emergency. An operations center was opened at John Churchill's home with the monitoring of the Highway, Police, and Fire radios. Crews from the Highway, Police and Fire Departments were patrolling roads and directing traffic. One of the main problems was the closing of Route 2. The traffic was coming up Burrington Road looking for a way to Charlemont, North Adams and Williamstown. At one point the police and fire people were dispatched to Colrain to aid a vehicle in water that Colrain could not reach. The call was called off as the victims reached land before our team arrived. About 3 AM the rains slowed and the departments met to decide strategy. They decided to call all personnel to the Fire Station at 8 AM Sunday morning. We got to bed about 4 AM. Talk about short nights!

At seven the next morning the Fire Department sent a radio message for all personnel to report to the station at 8 AM. A communications center was set up at the Fire Station and lists of elderly and infirm and people who had volunteered to help including those who could take pictures for flood aid were drawn up. The Police Department was assigned to traffic control as we were still getting Route 2 traffic with no place to send them but back. Police Chief Silvester and Mike Smith were to check on the elderly by phone. At the same time crews were sent out to appraise the road damage and check homes along the way. As the crews responded back to the station the status of the roads was set down and corrective action was noted. In the late morning department heads met again and decided that the top priority was to open as many roads as possible for the use of emergency vehicles so that families could get out for necessities. At noon food came pouring in to feed the volunteers. Thanks are in order! From 1 PM to 6 PM a large crew assisted the highway department in opening roads, turning on water etc. At 6 PM all but 25 families had some sort of a road.

On Monday the road crew and hired equipment roughed in most of remaining roads and the Fire Department pumped out a few cellars.

On Tuesday Dick Giard and Earl Gleason attended a meeting in Greenfield called by the Mass. Civil Defense. This was followed by a tour of the affected towns with the State CD Representatives, Mass. DPW and aides representing Senator Oliver and Representative Healy as well as the press going to the various towns.

Earl Gleason guided a F.E.M.A. (Federal Emergency Management Agency) team and a representative from the State DPW around town as they made a preliminary estimate of a \$380,000 loss. This team toured Heath for two days.

On April 10, the Selectmen, Town Accountant, and Civil Defense Director went to a meeting with various government agencies at the Mohawk School. Also in attendance were a couple of state senators including our own, Lieutenant Governor Murphy and the Public Safety Commissioner. After a tour of some of the towns a question and answer session was held.

This ended the local Civil Defense active involvement with the incident and I have the following comments. First I would like to thank anyone who helped in any way. Also as one who is somewhat critical of state and federal government (boy, is that an understatement!) I must say that all agencies with the exception of the DEQE did a wonderful job and were extremely cooperative as far as I was involved.

Other activities: The Chief attended about six meetings and did one smoke detector inspection. Four Heath firefighters attended the Annual Tri-State Mutual Aid Field Day. A good showing of equipment and apparatus was enjoyed. Deputy Chief Walt Gleason was drawn to receive a door prize.

## WANTED

### HEATH FIRE DEPARTMENT

Is looking for public spirited people:

Requirements

2 nights a month at training; respond when called; perhaps attend one fire school per year.

Jobs available: Firefighters

Mechanics

Radio operators

Guides for incoming Mutual Aid Units

Proposed Compensation: Self Pride! ! !

The Heath Fire Department is an equal opportunity employer. Contact any fireman for information or attend any meeting. Meetings are the 1st and 3rd Thursday of each month at 7:00 PM.

## ASSESSORS' REPORT

by Alan Nichols

As this article is being written we are halfway into the review period on the new valuations. We would like to thank everyone who has come in with questions, concerns, or to point out errors or discrepancies. With so many proof readers the final tax list should be near perfect.

Our next public event will be the Classification Hearing on Monday June 22, held jointly with the Selectmen. This hearing is to decide if we will tax residential property at a different rate than industrial/commercial property.

Steve and I will attend a course on classification in Pittsfield on June 10 which is required by the state before we can hold the Hearing and finalize the tax rate.

We haven't wanted to hire a clerk without definite funding authorized by the Town Meeting. Karen MacDougall has agreed to do the job and we hope she can start directly after the June 23 Town Meeting. With the new computer tax program there will be a lot of work and the job should tie in well with Karen's other town jobs.

**GREENFIELD CINEMAS 1-2-3-4-5-6**

**Route 2 Mohawk Trail**

**Greenfield, MA**

**24 Hours Movies**

**Phone 772-0298**



## HEATH PEOPLE IN THE NEWS

Debbie Porter is leaving for Australia via Hawaii on June 13. Debbie's sister, Rachel, who lives in California, won this trip for two and asked Debbie to go with her.

Dr. David Pomeroy will be bicycling this summer with 200 others on the TransAmerica Trek, a fundraising event for the American Lung Association. This event is expected to raise one million dollars for the Association. David is preparing for the 46 day journey, 3400 miles from Seattle to Atlantic City, by modifying his 27" Nishiki bicycle and adding a third front sprocket to give him 18 gears and by attending a bicycle leadership training course capped off with a 240 mile ride. Each participant will have raised a minimum of \$5000 to participate in the trip and David expects to raise \$10,000 by accepting pledges by the mile. David is a family practitioner in Gig, Washington. He grew up in the east and spent some time in Heath where his mother and father had a place off Branch Hill Road. He presently owns land there.

Laurel Finck, daughter of Don and Lucia Finck, after having received an honorable discharge from the US Marines last December, has re-enlisted retaining her rank as Corporal and is now stationed at the Marine Corps Air Station in Kaneohe, Hawaii.

Rev. Kevin Pleas has received his degree from Andover Newton Theological Seminary.

Eric Sumner will enter Amherst College as a sophomore in the fall. He will major in mathematics and physics.

Pam Porter and her husband, Brian deVriese, have moved to Heath. Brian is working with Juster-Pope Architects and Planners in Shelburne Falls.

Charles Kades was a guest of honor recently at the Commemoration of the 40th Anniversary of Japan's Constitution held at the University of Maryland. As Deputy Chief of the Government Section, SCAP, Colonel Kades and General Courtney Whitney directed the staff of 28 Americans who prepared the draft of Japan's present Constitution in 1946 by order of General Douglas MacArthur.

Bob Dane will show eight of his glass sculptures at the Sarah Squerl Gallery in Cincinnati, Ohio from June 26 to July 30.

Amy Barry was awarded an Honorable Mention for her hand quilted wall quilt at the Manchester, Connecticut Art Association's 14th Arts and Crafts show and sale on May 31. The design of the quilt was an Amish design called Hearts and Flowers.

Among the 20 women from GCC who have been accepted as transfer students to Smith College through the Ada

Comstock program is one from Heath, Patricia Venneri. Pat is majoring in English and expects to be a playwright someday. She has already completed three plays. Her husband, Skip, is a Ph.D. candidate at the University of Massachusetts.

Maud and Al White have moved to Oneida, New York. Maud is the daughter of Kathy and George Harris. Maud is a Marketing Associate at Crouse Irving Memorial Hospital in Syracuse and Al is Associate Administrator of Faxon Hospital in Utica.

## TOWN OFFICE HOURS

(At Town Hall unless otherwise noted)

Selectmen: Tuesdays 7:15 PM  
Assessors: Mondays 7 - 9 PM  
Town Clerk: Tuesdays 6:30 - 7:30 PM  
 Wednesdays 8-11 AM. Also call 337-4268 between 5 & 8 PM for appointment.  
Town Accountant: Mondays 9 AM - 1 PM

Town Treasurer: Mondays, Wednesdays & Thursdays  
 & 1:30 - 5 PM

Tax Collector: and by appointment, call 337-4394

Finance Committee: As posted

Planning Board: 1st Monday of Month 7 - 9 PM

Heath School Committee:

1st Wednesday of month 7:30 PM

Library Trustees: 3rd Monday of month 7:30 PM

Library: Mondays 6 - 9 PM Wednesdays 1 - 5 PM

Saturdays 9 AM - 1 PM

Town Nurse: Wednesdays 8:45 - 10:45 AM

Fridays 12:45 - 2:45 PM

(call 625-2829 between 7 - 8:15 AM for appointment)

Post Office: Monday through Saturday

9:30 AM - 1:30 PM

Dump \*: Mondays 10 AM - 2 PM Wednesdays 1 - 7 PM

Saturdays 9 AM - 5 PM

\* (Permit required - see Town Clerk)

Town Telephones: Town Hall 337-4934  
 Community Hall 337-4847  
 Town Garage 337-4462

FIRE 337-4461  
 POLICE 337-4901

## CLASSIFIED

FRESH WINDS FARM Paul and Marcella Lively & Sons  
 Excavating - Loam - Sand - Stone 337-4331  
 \* \* SCREENED LOAM A SPECIALTY \* \*

Additional copies of the HEATH HERALD are available at Peters Store newsstand. . . & at the Heath Library

## PETERS GENERAL STORE

The ONLY Store in Heath

INSTANT LOTTERY TICKETS  
 NOW AVAILABLE

We Sell Alcoholic Beverages

\*\*\*

Now selling SUNOCO Gas and accepting Credit Cards

\*\*\*

Michael Peters

Tel: 337-5501



MAIL TO:

Bulk Rate  
 U.S. POSTAGE  
 PAID  
 Permit No. 11  
 Charlemont, MA 01339

HEATH HERALD Box 54, Heath, MA 01346