



VOLUME 9 NUMBER 3

AUGUST/SEPTEMBER 1987

# HEATH HERALD

HEATH'S FIRST NEWSPAPER 35¢

## HEATH FAIR 1987

by Barbara Smith

The Heath Fair will open its gates Friday, August 14, for its 70th year. This year's Fair will have some new events and some of the usual events.

Friday will start off with a pony pull at 1 PM followed by a garden tractor pull at 4 PM.

The Exhibit Hall will be receiving exhibits from 4 to 8 PM. (Please get your entries in early. If you have any questions concerning entries, call Barb Smith at 337-5563, evenings).

The Hilltown Pullers Association will put on a 4 X 4 pull starting at 6 PM. This year we have made some improvements on our track and spot lights have been installed. At 9:30 PM the fair and the Heath Fire Department will put on another show of fireworks to end the day with color.

Saturday will start out with the exhibits being judged in the Hall and livestock judging going on all morning. The oxdraw will start at 11 AM with an ox parade being held later in the day.

The Heath Fire Department will put on a chicken barbecue at noon which will be followed at 1 PM by country music played by the "Hill County" group. At 2 PM we are excited to have the grand prize winners of the International Mime Festival perform. The Wright Brothers not only do mime, they also do some juggling and clown acts - something for the entire family.

Be sure to stay around the stage after the Wright Brothers; the Heath Preschool will hold a pie auction with Mike Chrisman as the auctioneer.

Children's games will start at 3 PM with possibly another ice cream eating contest following the games!

The evening entertainment will be a square dance on the grounds featuring the "Catamount Mountain Boys" with Doug Wilkins calling. The dance will be from 8 PM to midnight.

Sunday morning the joint Heath/Rowe Church service will be held on the grounds at 9:30 AM and the Exhibit Hall will open at 9 AM.

The morning will be full of livestock judging and the horse draw will begin at noon.

The Fire Department will put on another chicken barbecue lunch which can be eaten as the fiddlers show begins. The fiddlers will break at 1 PM for the annual Fair Parade which will be followed with a concert by the Shelburne Falls Military Band. Following the concert the fiddlers will continue to play until 8 PM.

All weekend there will be a flea market on the grounds plus concessions and food for sale.

This year all of our entertainment will be under tent cover. Rain or shine you won't have to miss a thing.

## Local Girl Competes In Horse Show

by Susan Silvester  
Horseback Riding Club Advisor

The annual horse show sponsored by the Mohawk Trail Regional School Horseback Riding Club was held on Saturday, July 18, at the school. Heath resident Shelli Galipo, who graduated from Mohawk this June, was a major competitor in the show. Shelli received ribbons in many classes and was awarded the English Champion trophy. She shared the Reserve Grand Champion award with Cathy Mayer of Buckland. Other awards were: Western Champion, Cathy Mayer; Western Reserve Champion, Heather Fischlein of Shelburne Falls; English Reserve Champion, Dawn Davis of North Adams; and Grand Champion, Josephine Hoedl of Berkshire.

The twenty classes included fitting and showmanship, equitation, pleasure, in-hand, command, trail and jumping for both English and Western riders. A bareback "sit-a-buck" class, equitation for adults and costume classes rounded out a full day of fun and excitement. Tracy Pizzolatu of the Stoneleigh Burnham School was judge; Betsey Silvester assisted her in the ring with ribbon distribution. The youngest contestant was 8 year old Christine Mayer of Buckland.



Shelli Galipo wins the English Champion Trophy

(Photo by Sue Silvester)

\* \* \*

So come to the 1987 Heath Fair for some fun, entertainment, or just to talk to a seldom seen neighbor. There is always something to do at the Fair!

## MILESTONES

by Edith C. Royer

Demetra Anne was born on June 5 to Ruth and Stephen Belittos of Rowe Road.

Joseph Adam was born on June 23 to Cathie Rubeck and Duane Herzig of Sumner-Stetson Road.

Jarilyn Marie was born on June 23 to Sharon and David Rogalski of Gill. Jerilyn is the great-granddaughter of David Giard, Sr. of Heath.

Heather Nicole was born on July 14 to Tracy and Stanley Frick of South Carolina. Heather is the granddaughter of Bette and Ed Decker and great-granddaughter of Mildred Decker, all of Heath.

Nathaniel Elliot was born on July 17 to Steven and Emily Blood, of Selkirk, NY. Emily is the daughter of Hazel Porter of Heath.

Kelly Elizabeth was born on July 24 to Laurie and Ronald Pease of Greenfield. Kelley is the great-granddaughter of Mary and Elmer Sherman of Heath.

Sheri Galipo was married to John Messier on June 20 in Bedford, VA. Sheri is the daughter of Pamela and Raymond Galipo and is the office manager for IPP in Roanoke, VA. John is a funeral director for Cedar-Thorpe in Bedford. They will make their home in Bedford.

Jana L. Gallup and Michael A. Purington were married on July 18 at the home of her parents, Esther and Richard Gallup in North Heath. Jana will be teaching at Mohawk Trail Regional High School. Michael is employed at the American Fiber Co. in Colrain. They will live in Colrain.

Ruth and Olin Whipple celebrated their 45th wedding anniversary on June 19.

John A. Read died July on 16 in the Baystate Medical Center. He is survived by his wife, the former Harriet Carpenter. A memorial service was held in the Heath Church on July 25. John was well remembered for his interest in the Heath Historical Society and in other town affairs. He and his wife had been permanent residents of Heath since 1974.

## LOSS OF A STAFF MEMBER

As one of the founders of the HEATH HERALD nine years ago, John Read never lost his interest in the paper. He continually produced new ideas which he would explain enthusiastically. Even when wintering in the south he would send up suggestions indicating he kept our paper in mind.

At the last meeting of the Staff that he recently attended, he could hardly wait to tell of his latest idea - a prize to be awarded to the person guessing most accurately in advance the total attendance at the Heath Fair this year. This contest will be carried out as he had wished.

John's help and efforts on other projects for the Heath Historical Society and town activities will be remembered for a long time and his willing help will be greatly missed. We at the HERALD will always appreciate our special association with him.

## LETTER

To the Editors:

This is a letter of thanks to all those who worked so hard to get funding for a pre-school in Heath. For the Heath School Committee and the Early Childhood Advisory Council - and numerous other people, as well - the receipt of the Department of Education grant represents a reward for months of hard work spent on the grant writing effort. Leg work, phone work, countless meetings...problem solving, researching issues and concerns, providing information, writing and re-writing, typing and re-typing. The work was cooperative work. Lots of people working together to make it happen.

After all the work, we delivered a grant application to the North Adams regional office which we told ourselves we felt good about - a job well done, regardless of the outcome. We looked back upon a process which had been wonderful for the way in which it had brought people together to work for something they cared a lot about. And, it seems to me that the community dialogue which the process encouraged was good and healthy and likely to continue.

And now Heath has a new pre-school for the coming year, thanks to everyone who lent their support. As a parent and member of the Advisory Council, I, for one, am delighted.

Carol Sartz  
Heath


## HEATH PRECIPITATION

by Ralph Dickinson, Observer  
for Mass. Water Resources Commission

June precipitation was 3.65 inches; July precipitation was 3.81 inches.

Total precipitation for the first seven months of 1987 was 27.56 inches.

The showers in July were very local. For example, it might be raining in the north part of town and farmers would be getting in hay in South Heath.



# HEATH HERALD

HEATH'S FIRST NEWSPAPER

**Volume 9 Number 3** **August/September 1987**

Editorial Staff	Pegge Howland Caroline Smith
Staff Reporters	Beverly denOuden Edith Royer Susan Silvester Alli Thane
Advertising Circulation & Business Typography	Ray Pettengill Terry Pettengill Newland Smith

The HEATH HERALD is published six times a year in April, June, August, October, December and February.

**SUBSCRIPTION RATE** - One year, \$3.50 (payable in advance by check or money order)

**ADVERTISING RATES** - Display ads: \$3.50 per column inch (Discounts on six or more insertions)

Classified ads: \$1.00 per line.

Send all correspondence to Box 54, Heath, MA 01346

## HISTORICAL SOCIETY PLANS 3rd HIKE

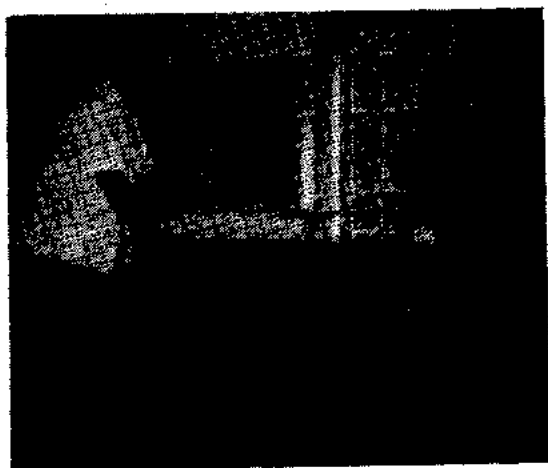
by Michael Coe, President  
Heath Historical Society

Since the Bicentennial Hike in 1985 from Fort Shirley in Heath to Fort Pelham in Rowe was such a huge success, it was strongly suggested that we should make this an annual event. Last year the Society, in consultation with our neighboring historical societies in Rowe and Colrain, decided to take the second hike east instead of west, from Fort Shirley to the site of Fort Morrison in Colrain, also occupied during the French and Indian War.

Accordingly on October 11, 1986, 27 participants (including some brave children) set out on the old Military Road where it crosses Hosmer Road near the Newland Smiths', down Roberts Brook to the West Branch Brook. The hikers ended up at the Arthur A. Smith covered bridge in Colrain where they were met by Cleon Peters who took them to Fort Morrison, north of Colrain Center on Route 112. Then they were returned to the Newland Smiths' field, with its magnificent prospect of Mt. Monadnock, and enjoyed a picnic. The weather had been perfect (as in 1985), and everyone agreed another hike should be planned for the next year.

Saturday, October 10, will be the date of the 1987 hike, and the Rowe Historical Society will again be co-sponsoring the event. We will be leaving the house of Nancy and John Williams on Middletown Hill Road in Rowe at 10 AM. Our destination will be Pulpit Rock, which overlooks the deep valley of the Deerfield River and which has about the finest view in western Massachusetts. There we will picnic (all eatables and drinkables will have to be toted in, so bring backpacks). Part of the route will be by bus, but we should have a good walk which will take us by some interesting cellar holes.

The rain date will be the following Saturday. See you in Rowe!



Moving piano in Old Town House  
Mike and Sophie Coe at work

(Photo by Sue Silvester)

**A.L. AVERY & SON**

GENERAL STORE

Charlemont • 339-4915

## HISTORICAL SOCIETY NEWS

by Susan Silvester, Secretary

A traditional potluck supper preceded a well attended annual meeting of the Heath Historical Society on Sunday, August 2, in the Community Hall. Following the supper there was a brief business meeting including election of officers. Continuing in their capacity as members of the Board of Directors are Dominic Musacchio, Michael Bakalar, David Howland and Edith Royer. Officers for the next year are President Michael Coe, Vice President Hazel Porter, Secretary Susan Silvester and Treasurer Craig Barry.

Dr. Kevin M. Sweeney, Director of Educational Programs at Historic Deerfield, presented an illustrated lecture entitled "River Gods in the Making: The Williams Family of the Western Massachusetts Frontier." The Williams family was responsible for the construction of the line of Forts during the war against the French and Indians, including Fort Shirley in Heath.

The restoration of the Old Town House on the Common in Heath Center is about completed with the excellent care and concern of contractor Bruce Cromack. The plaster on the interior walls has been replaced and painted and the exterior work will be completed soon. A work bee was held just prior to the commencement of this important phase of restoration, and the contents of the Town House moved across the road to the Schoolhouse Museum for the duration of the project. It is anticipated that another work bee will restore the artifacts to their original location.

## CHURCH NEWS

by Paul Snyder

Our combined Heath/Rowe congregations are meeting in joint services conducted by the Reverend Allen Comstock as interim minister. Mr. Comstock is a former minister of the Heath Union Church and is now at the Charlemont Federated Church. It is satisfying to see so many members making the effort to be in the sister churches on alternate Sundays.

With the leaving of the Reverend Kevin Pleas, who accepted a position as minister of the church in Geneseo, Illinois, the search committee is proceeding with its labors and should produce results soon. We ask your indulgence and, as Paul wrote to the Galatians, "Let us not grow weary in well doing, for in due season we shall reap if we do not lose heart."

The adult Bible Study Group meets every other Sunday at 10 AM in the Heath Church and all are invited to its enlightening and meaningful discussions.

August 16 is Heath Fair Sunday and the service will be in the horse-drawing stands at the Fairgrounds. Last year was my first experience with this service and I must admit that the animal sounds and the bustle of the herdsmen reminded me of the settings in which the original Word was given to us. It was an unforgettable experience.

We thank the Rowe Church for the beautiful setting of its Homecoming Day service. They certainly picked a fine day in the loveliest time of year. Very enjoyable and "Well Done."

## SCHOOL COMMITTEE REPORT

by Skip Venneri, Chairman  
Heath School Committee

This being summer, I have been deliberately maneuvered by my colleague Budge [Litchfield] into writing this column with the feeble excuse it was his day to go fishing. There are still some of us who put civic duty above personal pleasure. (Selectmen, take note when drawing up raises for us dedicated types next winter.)

The first bit of breathtaking news is that we are no longer a non-operating system. As of July 1 we are an operating system. The pre-school grant was approved by the State and we are in the process of implementing the opening of a Heath pre-school. Linda Marcotte has graciously consented to being the liaison between the pre-school parents group and the School Board. Positions will be open for teacher, aide, custodian and, I believe, some sort of custodian. Come to our August meeting (first Tuesday at 7:30 PM) for more comprehensive information.

At the Rowe school, teacher negotiations have progressed satisfactorily and the contract is in the hands of the teachers to ratify or reject. We have reason to be optimistic concerning the outcome. Also this year at Rowe the half-day release days will be scheduled for after the Thanksgiving break, with full-day weeks from September to November. Watch your child's newsletter for more detailed instructions. Congratulations to the staff of the Rowe School for the dramatic rise in the California Achievement Tests. Children at the Rowe School showed profound improvement.

The Mohawk Trail Regional High School had its first placement to Princeton this year. Congratulations to Mr. Dzialo and staff. Mohawk was also in the second stage of the decision process for national ranking. This is quite an honor and hopefully, when this selection process is made next time around, Mohawk will be successful.

Since one Board member is fishing and the other running around with building plans in her hand, I will take this opportunity to wish you all a safe and happy summer. Hope to see you in August.

## HEATH PRE-SCHOOL

by Carol Sartz  
Early Childhood Council

On July 13, the Heath School Committee received the good news that the Massachusetts Department of Education has awarded the town a grant to operate a public pre-school program during the coming year. The new pre-school, operating under the jurisdiction of the Heath School Committee, will be open to all Heath and Rowe three and four year old children, free of charge. Planning for this program has already begun, with the intent of opening in September at the same time as other public schools.

The purpose of this program is to provide a classroom setting for young children to learn about their community through a play-based curriculum. The school will be housed in the Heath Community Hall and will operate three days per week with two sessions each day. The sessions will be limited to 15 children and will be staffed by a head teacher and two classroom aides.

Parents interested in registering their children can do so by contacting School Committee member Linda Marcotte, 337-4394, no later than August 10. (Three year olds must be three by August 31 in order to be eligible.)

The Early Childhood Advisory Council is looking forward to continuing to work with the School Committee and providing whatever assistance is needed.

## LADIES AID FAIR

by Edith C. Royer

The Ladies Aid held their annual summer Fair and Sale on July 29. This was a very successful event with the sale of fancy articles and food netting about \$700.

The weekly meeting of the Ladies Aid will resume again in a couple of months and we hope to see more of you then. Our thanks to all who have helped to make this a successful year.

## GARDEN BENEFIT HELD IN HEATH

Eisa Bakalar opened her garden for the benefit of the Shelburne Falls Woman's Club Scholarship Fund on July 28. Besides a visit to the garden, a small auction was held and a luncheon was served. Ninety-eight people enjoyed the garden on a beautiful Heath day. The event netted \$550 to benefit the Scholarship Fund. Thanks to the Heath Agricultural Society, the cars were parked at the Fairgrounds and visitors were shuttled by bus to the Bakalars' place on Hosmer Road.

compliments of

**Wells Corner Country Store**

CHARLEMONT 339-6632



**More than just a candle store!**

In the center of Shelburne Falls overlooking the scenic glacial potholes

Open every day 10 to 6

Thursday, Friday & Saturday 10 to 8

## PREPARE FOR SCHOOL

by Sharleen Moffatt, R.N.  
Town Nurse

As the school year fast approaches, I would like to thank all of the parents for their help in greatly reducing the incidence of pediculosis (head lice) in our schools.

It is that time again. Be extra vigilant. When shampooing your children's hair, check for the sign of infestation, i.e.; nits (eggs) or live lice. If you are unsure of what you are seeing, ask a friend or neighbor or call me. Because of one good year, we cannot afford to be complacent about this ever growing problem.

There are several new products that have come to the market in the past year. The creme rinse, probably the most popular of the new products, sports decreased toxicity and states that nit removal is not necessary to the effectiveness of the product. Please remember that our school has a strict no-nits policy so that nit removal is necessary before a child can re-enter the school system. Thanks for your continued assistance in keeping our school "lice free."

## FRESH AIR CHILDREN

by Susan Silvester

Again this year two little girls from New York City were Fresh Air guests of Heath families. Marie Decicco, age 11, from the Queens section of New York City and Denise Rojas, age 10, from the Bronx, stepped off the bus in Greenfield on July 15.

Marie stayed with the Chrisman family on Burrington Road, where her hostess was 11 year old Siena. It was her second summer with the Chrismans, and from all indications, Marie had a wonderful time. Last year she learned to swim here, and this summer enjoyed practicing her swimming, playing mini-golf, Clue and picking raspberries.

Denise had visited the Silvesters for four years and said she especially enjoyed horseback riding, going to Greenfield and weaving a basket in Old Deerfield.

The girls departed for home on Wednesday, July 29, via bus direct from Greenfield to New York City. The two weeks they were here flew by all too fast. We can hardly wait to see them again!



### Briar & the Rose

**Lingerie & Fine Clothing**  
by Catherine Nichols

**Wooden Furniture**  
by Alan Nichols

**Daily Hours:** Tues., Thurs., Fri., Sat. 10 - 5  
Sunday 12 - 5

Salmon Falls Market Place  
Shelburne Falls, MA

## WELLS SCHOLARSHIP AWARDS

by Jean Holdsworth, Trustee

The Fred W. Wells scholarships to college students and grants to health related and agricultural organizations have been awarded for 1987-88. This year a total of \$86,000 was awarded in scholarships to outstanding students in several Franklin County towns. Organizations providing medical and health care in the County received \$30,000 and agricultural awards totaling \$5,000 went to the Franklin County Technical School, Franklin County Fair and the Heath Fair.

Three Heath students received scholarships for higher education. Congratulations on a job well done to Melanie Tripp, Roberta M. Tripp and Eric E. Sumner.

Wells scholarships are awarded each June for the following school year. Applications are available in the early spring at the town hall. Should you have any questions about the Fred W. Wells scholarships or grants you may contact Jean Holdsworth at 337-6611.

## CARPENTER AWARD

The Frank C. Carpenter Prize was awarded to Valerie Belval, of Number Nine Road, on her graduation from Rowe Elementary School on June 17.

This prize is awarded annually to a Heath student who, through perseverance, attains academic and social success.

### BRUCE A. CROMACK

*General Carpentry  
Restoration a Speciality*

Burrington Road

Tel: 337-4350

### QUALITY CARS & TRUCKS SILVESTER'S

Colrain Stage Road Heath, MA 01346  
413-337-4491

### SPECIALS

1984 Toyoya 4 X 4 Truck  
Low Mileage, Long Bed, 5 Speed  
Air Conditioning, Tilt Wheel, Window Package  
One Owner  
also  
1987 Ford F150 4 X 4 Truck



## THE FAMILY FARM: AN ENDANGERED SPECIES

by Alli Thane

Dairy farming in Heath appears to be coming to an end. Fred Crowningshield and Ern and I are the only dairy farmers left. It's been a good life for all the hard work and a wonderful way to bring up kids.

Oh, we weren't born on the farm the way Fred Crowningshield was. We lived in a small mill town 25 miles west of Boston. Ern worked for the government on a research area and when the project moved to New Mexico we decided not to move with it. Ern had always wanted to farm. I had lived on a small farm and knew how long the hours, how hard the work. Being a democratic family, however, we put it to a vote. Four kids and Ern voted "yes" against my "no" and we were off. We found our farm in an ad in the New England Homestead, contacted Arthur and Phyllis Volland, sold our lovely house in suburbia and came west. If we had realized how little we knew about cows and farming, we would never have had the courage to attempt it. But with a book in one hand, a milking machine in the other, and the help and instruction of neighbors like Ken and Grace Crowningshield we plunged ahead.

We were poor but happy, and I've often said that without my mother's "Care" packages we probably would have starved the first few years.

The children had the unforgettable experience of attending the Branch school - eight grades in three rooms. They walked to school, sometimes through deep snow as the roads were not plowed as promptly as they now are. Those were the days I hitched up Gypsy, our family horse, and picked them up at the end of the road in a sleigh.

We almost gave up once trying to struggle through three drought years. We'll never forget the kids declaring that they had a council meeting and voted that we parents could go back to Maynard but they would stay in Heath. They had decided to farm themselves out to three different neighbors. Realizing that this life meant so much to them, we gave in and struggled again.

The kids made it through colleges, all of them, and Ern and I are still working long hours and enjoying most of it. This is home, the birds, the flowers, the fresh air, the sound of silence. The word "Heath" to us is synonymous with phrases like "people helping people," "fun in a simple way," "living off the land" and "friendly neighbors."

We're more mechanized now. We have a milking system that goes from cow to tank through glass pipes; no more carrying buckets. We have a gutter cleaner that takes care of that end of the job; no more shovelling. We've cut down the operation so that we can manage it more easily.

It makes us sad to think that we can do this for just a few more years, and feel doubly sorry that young people are no longer going into farming around here. The high expense of beginning such an operation and the small financial reward have forced young people to realize they can have more lucrative careers elsewhere. I think, however, that they couldn't find a happier one. Take it from a family who knows.

## FRIENDS OF THE LIBRARY

by Pat Leuchtman, President

Many thanks to all the Friends who baked - and bought - at the Memorial Day Bake Sale held at the Library. We raised another \$42.20 for our treasury.

The next big project is the Book and Bake Sale to be held at the Heath Fair. Please look through your shelves and see if there are any books you can weed out and donate for the Sale. We'd like you to deliver the books directly to the Fairgrounds on Friday afternoon, August 14 where the Canvas Reading Room will be pitched. If this is not possible for you, call Pat Leuchtman (337-4316) to make a pick-up arrangement. Whether or not you have books to donate, I hope you'll be able to bake a goody or two for the sale. Look for the sign-up sheet at the Library; we'd like to have the Reading Room staffed from 11 AM to 5 PM on Saturday and from noon to 3 PM on Sunday.

At the annual meeting of the Friends of the Library held on July 30 all officers were reelected. It was decided that proceeds from the Book and Bake Sale at the Fair will be used to replenish the children's collection in the library. The chairs which are around the large library table are in bad repair. It is hoped volunteers will be found to take a chair for refinishing or re-seating.

Elsa Bakalar will be showing her nationally famous gardens to local garden clubs this summer and she has asked them to make a donation to the Friends.

John and Nancy Clark are still working on organizing a jazz concert to be held in late September for the benefit of the Friends. There is also the possibility of an animated-film festival. We are fortunate indeed to have such creative, energetic and generous members.

If you want to support the work of the Library which is an important part of our Community life with your dues, by volunteering or fund-raising, please join the Friends. Our librarian, Alli Thane, can accept your contribution; or call Pat Leuchtman.

## LIBRARY LINES

by Alli Thane, Librarian

The new summer reading program has begun again at the library. This year's theme is "Monsters" and the Western Massachusetts Regional Library has provided us with log books, pictures to color and certificates to award at the end of the summer. Come in and pick up your material and some good books to read.

On Saturdays we close the library at 12 noon instead of at 1 PM. This is through August.

The Wednesday children's reading group is very popular. Our thanks to Veronica Lively Smead who conducts this at 3:30 each Wednesday.

New books received: Misery by Stephen King; The Helga Pictures by Andrew Wyeth; Bolt by Dick Francis; Texasville by Larry McMurtry; The Fatal Shore by Robert Hughes; Patriot Games by Tom Clancy; Haunted Mesa by Louis L'Amour; West with the Night by Beryl Markham; Legacy by James Michener; Savages by Shirley Conran; The Silk Vendetta by Victoria Holt; Child of the Northern Spring by Persia Woolley; and several new children's books.

*K.R. Jeweler*

17 Chapman Street • Greenfield, Ma. 01301

*Fine Selection of Watches & Jewelry  
Watch & Jewelry Repair*

— COME TO THE FAIR! —

## PIONEERING SPIRIT

by Beverly denOuden

I came upon Wally Upham as he was notching, with chisel and mallet, the enormous 10" x 10" x 21' pine beams that will form the rafters of the house he and Carolyn Kiehn are building on Number Nine Road. They have christened their lovely ten acres, "Spring Meadow Farm" and indeed it is now and will become all of those things. The Branch Brook flows along the open meadow that their house will look out upon.

The evolution of Wally and Carolyn's house demands a bit more than the usual foray into home building.

The dream began when Carolyn purchased the property in 1972. She is the granddaughter of the late Joseph Tetreault who had land on the Charlemont/Rowe boundary. Carolyn spent her childhood summers on that farm and she says her return to New England after many years on Long Island feels like coming home.

The post and beam style intrigued Carolyn and, when she and Wally decided on a home in Heath, they, in true country style, bartered for a blueprint. Wally, a photographer, swapped some photo work for the passive solar plan, modified to include the post and beam design. Work began in the spring of 1985 with the objective being no mortgage; one house.

The first year was devoted to planning and sourcing the timber and here Bill Clark played his part. Bill was able to locate the pine timbers for the 10" x 10"s. Pine serves for all the upright posts in the house. The light colored wood contrasts beautifully with the black cherry braces, all of which are pegged with hand-made cherry dowels. Wally says he now has peg making down to a science on his electric planer.

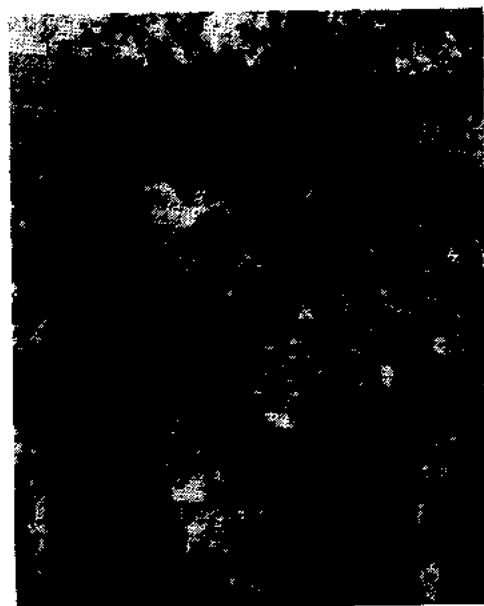
Both Wally and Carolyn are thumbing the pages of their "how-to" book, Building the Timber Frame House by Ted Benson. This book has been the compendium for the entire project, that is, coupled with, in this writer's eyes, a double dose of derring-do. Carolyn applied algebraic skills to translate the book illustrations to the real wood in their yard, and together, with only little trial and error, they have come up with some original solutions to the joining of their beams.

The first winter could best be described as an outing while work progressed. The second summer the lower level of the house was beginning to take shape. Wood was milled at Meyer's mill and by fall Carolyn and Wally had a "roof" over their heads; the roof being the subfloor for the main level. That subfloor is also supported with 10" x 10" joists. These monsters were moved into place exclusively with block and tackle and, undaunted, Carolyn and Wally have plans to raise the 10" x 10" rafters using the same techniques. The goal for this summer is to raise that roof; the first floor walls now being ready to support that next step.

The passive solar will be served mainly through large glass doors on the south. Carolyn and Wally have also satisfied their "farming" instincts with the addition of a large greenhouse on the south side of their home. The bounty of their north Heath garden is greatly facilitated by the early start of their plants in the greenhouse.

Carolyn, Wally and I chatted for nearly two hours perched on the beams lying ready for notching in the dooryard. Carolyn told us about her day at the Farren Hospital where she assists terminally ill individuals.

As I got up to return home we walked by their garden and I was offered a nasturtium blossom - to eat - which I did. It was a fitting close to a delightful visit.



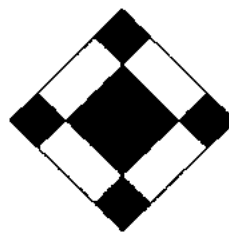
Assembling a Post and Beams  
Lester Kiehn and Wally Upham

(Photo by Wally Upham)



New House under construction at  
Spring Meadow Farm

(Photo from Wally Upham)



WOODEN QUILTS  
TO WARM THE SOUL

NARY A STITCH  
SPECIAL ORDERS WELCOME

HELEN J. MACKIE  
HEATH, MA 01346 - 0026



## BRIGADOON, OH 43056

by Alastair Maitland

A couple of years ago, in connection with the Town's Bicentennial, the HEATH HERALD and the Heath Historical Society undertook a joint project to identify "all places named Heath." (The quote is from the June/July issue of the HEATH HERALD).

They came up with one Heath in England, one in Texas, two Heath townships, in Michigan and Pennsylvania respectively, and a Heathsville in Virginia. Such was the assiduity and the professional skill with which this enquiry was conducted that it has until now been universally accepted that the tally was definitive.

However, travellers who have recently ventured into the Western Reserve have brought back reports of the existence of another Heath, which is said to be located in Licking County, Ohio. Photographs purporting to corroborate these reports have been furnished and one of them, showing what appears to be a water-tower, is reproduced herewith.

The Lewis and Clark of this particular expedition were Phyllis and Chuck Kades. And the occasion was Phyllis' 50th (surely not!) Class Reunion at Denison University in Granville, Ohio. They had expected to be assigned a room in the University. But since they were accompanied by their dog, they were invited to find quarters elsewhere, and that is how they just happened to discover a place called Heath, which, they say, possesses its own Post Office and Zip Code, as well as a Holiday Inn.

I have never been one to challenge the tales of travellers. But the circumstances of this particular journey are such as to inspire a certain caution, not to say downright skepticism.

In the first place, it is hard to believe that the Heath which Phyllis and Chuck discovered in Ohio could have escaped the notice of the meticulous Bicentennial researchers. Secondly, and more important, class reunions are notoriously emotional and misty-eyed affairs. They are occasions for regret for all the might-have-beens: the career choice that was not made, the unpursued or unfulfilled love affair, the stand that might have been taken when the chips were down. They are imbued with the special poignancy that Edward Fitzgerald expressed in the lines: Alas, that Spring should vanish with the Rose! That Youth's sweet-scented manuscript should close! In short they conduce to all sorts of imaginings and flights from reality.

Was Heath, Ohio, then merely an illusion? The photographs suggest otherwise. But we know that photographs can be doctored.

Some of my more prosaically-minded acquaintances have advanced the theory that the Heath that Phyllis and Chuck Kades saw was in fact a sort of Potemkin village. (Potemkin was a Russian commander-in-chief and favorite of Catherine the Great. Once on a tour of his grandiose colonizing project in southern Russia he attempted to impress his Sovereign by constructing a series of neat, but fake, and empty, villages along the route of the Royal Progress). The theory is that Heath, Ohio, was in fact nothing other than an elaborate hoax on the part of the Denison University top brass who, wishing to pay a special tribute to one of their most distinguished alumnae and her Heathen consort and to make them feel thoroughly at home, built a fake New England town for them to stay in and gave it the name of Heath.

Having been much influenced in my own youth by J.M.

Barrie's "Mary Rose" I am inclined to reject the Potemkin hypothesis and to believe instead that Heath, Ohio, exists somewhere in that twilight zone between reality and fantasy. It may perhaps be compared to Ripton, the New England town which has figured every now and then in local press reports but which does not appear on any map. And I seem to remember that, when Judy Garland eventually made her way to Oz, she was accompanied by her dog.

\* \* \*

[Editors' note: The above article was to have been accompanied by one or more photographs, selected from a series supplied by Chuck Kades. A number of witnesses can swear to having seen the photographs. But the entire series has - unaccountably - vanished!]

## TOWN OFFICE HOURS

(At Town Hall unless otherwise noted)

Selectmen: Tuesdays 7:15 PM  
Assessors: Mondays 7 - 9 PM  
Town Clerk: Tuesdays 6:30 - 7:30 PM  
Wednesdays 8-11 AM. Also call 337-4268  
between 5 & 8 PM for appointment.  
Town Accountant: Mondays 9 AM - 1 PM

Town Treasurer: Mondays, Wednesdays & Thursdays  
1:30 - 5 PM

Tax Collector: and by appointment, call 337-4394  
Finance Committee: As posted

Planning Board: 1st Monday of Month 7 - 9 PM

Heath School Committee:  
1st Wednesday of month 7:30 PM

Library Trustees: 3rd Monday of month 7:30 PM  
Library: Mondays 6 - 9 PM Wednesdays 1 - 5 PM  
Saturdays 9 AM - 1 PM

Town Nurse: Wednesdays 8:45 - 10:45 AM  
Fridays 12:45 - 2:45 PM  
(call 625-2829 between 7 - 8:15 AM for appointment)

Post Office: Monday through Saturday  
9:30 AM - 1:30 PM

Dump \*: Mondays 10 AM - 2 PM Wednesdays 1 - 7 PM  
Saturdays 9 AM - 5 PM

\* (Permit required - see Town Clerk)

Town Telephones: Town Hall 337-4934  
Community Hall 337-4847  
Town Garage 337-4462

FIRE 337-4461  
POLICE 337-4901

# Gilmore and Watters

INSURANCE AGENCY INCORPORATED

377 Main Street • Greenfield, MA 01302 • Tel: 413-772-0251



## WIN \$50.00 CASH

What do you think will be the total three-day attendance at the 1987 Heath Fair?

Submit your guess together with a new bona fide subscription to the HERALD with payment of \$3.50. Turn this in, with your name and address, at the HEATH HERALD table at the Heath Fair, before noon on Saturday, August 16, or send your entry by mail to the Heath Herald, P.O. Box 54, Heath, MA 01346. Mail entries must be post marked no later than Saturday, August 16. Renewal subscriptions are not eligible in this contest.

The person coming the closest to the total attendance, as verified by the Fair Committee, and also submitting a new subscription to the HERALD will receive a check for \$50.00. In event of a tie, the award will be divided equally. The award will be made by August 29, 1987.

This contest is not open to the HEATH HERALD Staff or their families.

---

### HEATH HERALD 1987 FAIR CONTEST ENTRY BLANK

My estimate of the the total attendance at the 1987 Heath Fair is: \_\_\_\_\_

My Name \_\_\_\_\_

Address \_\_\_\_\_

Town \_\_\_\_\_ State \_\_\_\_ Zip \_\_\_\_\_

Mail new subscription to:

Name \_\_\_\_\_

Address \_\_\_\_\_

City \_\_\_\_\_ State \_\_\_\_ Zip \_\_\_\_\_

Subscription payment of \$3.50 is enclosed.

Note: Renewal subscriptions are not eligible in this contest.

---



Automobile and Truck  
Maintenance & Repair

### STEPHEN'S GARAGE

HEATH, MA 01346

Stephen P. Belitsos  
(413) 339-6616

GM & ASE CERT.  
Master Mechanic

Gordon E. Taylor d/b/a



### BLACKMER INSURANCE AGENCY

R. E. Blackmer

On the Mohawk Trail

Joseph J. Judd

Shelburne, MA

Marion J. Taylor

Tel: 625-6527



TRUCKING • EXCAVATING

### J.M. BLASSBERG CORP.

NORMAN R. SESSIONS  
President

5 MECHANIC ST.  
SHELburne FALLS, MASS.  
BUSINESS (413) 625-2531  
RESIDENCE (413) 337-5756

### LYLE H. HALL, INC.

Colrain, Mass.

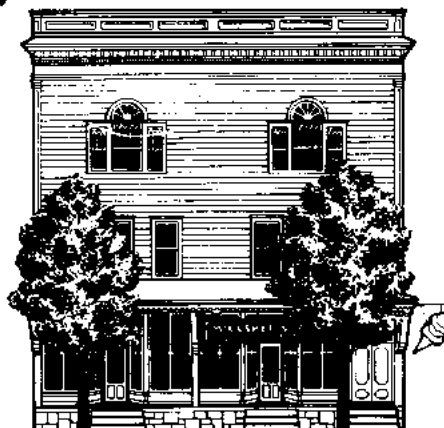
### BUILDING LUMBER

*HARDWOOD & SOFTWOOD SLABS*

**Come see us  
after the theatre  
for a coffee or a cone...  
...at McCusker's**



*at the Bridge of Flowers!*



**MCCUSKER'S  
MARKET & DELI  
SHELburne FALLS, MASSACHUSETTS**

*Quality Foods*

**OPEN DAILY 8 A.M. - 8 P.M.**

## FORESTRY FIELD DAY IN HEATH

Heath was one of several places in New England selected by the New England Forestry Foundation (NEFF) to hold their first annual forestry field day on Saturday, July 18. The location was Tree Farm 711 owned by Newland Smith, on Oxbow East, which has been managed under a forestry plan by NEFF for the past 30 years.

This event in Heath was planned and arranged by Mary Wigmore, Deerfield River Center Regional Forester for NEFF, and was attended by 20 interested tree farmers from various parts of western Massachusetts. The meeting opened with an informative talk on Timber Taxation under the new tax laws. This was followed by three tours through several sections of the Smith Tree Farm. The first tour led by Forester Kathy Hickey was through a white pine plantation set out in 1938. This tour demonstrated how a selective commercial cutting was made two years ago following several weeding operations which had been made during previous years.

A second tour, conducted by Forester Mary Wigmore, was made through a 15 acre section where an almost clear-cut was made four years ago to eliminate the heavy beech growth which had become severely hit by beech bark disease. This yielded about 350 cords of firewood and has left a scattered stand of large maple, ash and oak which is expected to regenerate. The third tour, led by Forester Bob Wigmore, was through another 15 acre section where a current logging and cordwood operation was being conducted. Although much of the operation to date has been done with horse drawing, the demonstration for this event was conducted by a team of oxen drawing several skid-loads of cordwood to a landing and skidding large saw logs. The oxen were provided for the demonstration by Brent and Robert Roberts, who are well known for their entries in the Heath Fair oxen contest.

After numerous questions on forestry and logging, the Field Day was concluded with a picnic lunch provided by Mary Wigmore.



Tree farmers learning forestry practice from Forester Mary Wigmore

(Staff photo)

**— COME TO THE FAIR! —**

## PLANS FOR ANOTHER WAGON TRAIN

Carroll Stowe is planning his seventh annual Wagon Train to take place this year on Friday and Saturday, September 26 and 27. Those participating will gather at the Fairgrounds on Saturday morning with their supplies, animals and wagons to prepare for the camp-out. That evening there will be a potluck supper with story-telling in the evening. The exact routes to be taken by the wagon train are still in the planning stage at this time. For further information contact Carroll Stowe at 337-4498.

### *BED & BREAKFAST*

Y'ALL COME

### **Forest Way Farm**

Heath, Massachusetts

Route 8A

413-337-8331

### **FOREST MANAGEMENT**

Planning \* Improvement \* Marketing

Many Local References

**WILLIAM D. UNDERWOOD ASSOCIATES INC.**

W.D. Underwood  
413-648-9560

Chapin Road  
Rt. 1 Box 176  
Bernardston, MA 01337



## **NEW ENGLAND FORESTRY FOUNDATION**

*Forest Resource Management*

offering a program of complete  
**Forest Resource Management**

plus

permanent forest conservation  
through our  
**Memorial Forest Program**

**Mary K. Wigmore**

**Resident Forester**

RD No. 1, Box 215  
Williamsburg, MA 01096  
(413) 628-4594

For more information, please call our  
Main Office at: 85 Newbury Street  
Boston, MA 02116, (617) 437-1441

**Professional Forest Managers since 1944**

## HOW DO YOU SPELL RELIEF?

by Alastair Maitland

To quote Selectman Art Schwenger: "What good is there in having a Federal emergency relief system if you can't get relief in an emergency?" The Federal agencies' dilatoriness in ante-ing up the promised funds for the repair of the town roads damaged during the April flood was one of the main concerns expressed at a sparsely attended Special Town Meeting on July 14.

Concern was also voiced about the adequacy of the Federal contributions. The Federal Emergency Management Agency (FEMA) share will now amount to no more than \$138,409 for certain town roads. The balance of the estimated repair cost, in respect of these roads, will be \$46,138, which will have to be financed in equal shares by the town and the state, unless our state representative is successful in securing additional state aid.

The FEMA, however, is not responsible for the town's so-called "Federal primary roads" (Dell Road, Avery Brook Road, Colrain Road and Route 8A), which fall within the jurisdiction of the Federal Highway Administration (FHWA). There is no word yet as to how much the FHWA may be disposed to kick in.

The Town Meeting voted to accept the FEMA contribution as well as the State's share of \$23,069, and to finance the town's matching share by transferring the required amount from "surplus" school funds. Voters also agreed to accept an allocation of \$220,000 in Small Bridge Replacement Program funds to replace three bridges with box culverts on Colrain Stage Road.

Selectmen's chairman Richard Giard announced that in light of the more pressing needs as well as the scale of flood-damage repair he and his colleagues had felt obliged to defer until next year the Route 8A rehabilitation project for which the sum of \$150,000 has been earmarked for the town under the State's Small Towns Road Assistance Program (STRAP).

In response to a question from the floor Richard Giard also announced that it had been decided not to contract out any of the emergency repair work. To do so, he explained, would involve the town in additional expenditures in the shape of professional engineering fees. The Selectmen had accordingly felt that the better course would be to bring in whatever extra machinery and personnel would be called for.

Whether this decision will prove in the longer term to be a wise one remains to be seen. Meanwhile one may wonder whether the town will not be placing an excessive burden on the already over-strained resources of the highway department. The road crew have only recently weathered the challenge of an exceptionally severe winter. The window of opportunity between now and the coming winter is closing fast. Perhaps the road crew too deserves some relief.

## REPORT FROM THE TAX COLLECTOR/TREASURER

by Linda Marcotte

Although the summer is supposed to be a slow time, I have been keeping busy with completing end of fiscal year reports.

The firm chosen to supply the Town with computer programs for the accounting and tax records has been training some of us in how to use these programs.

Unfortunately, tax bills are late in being issued once again. I believe the Assessors are waiting for state approval of the tax rate and once that is granted bills can be printed and mailed. When the final 1987 bill is mailed, the balance owed will be due within 30 days from the date mailed. The current interest rate is 14% and the demand fee is now \$5.00. These charges add up quickly so please try to pay the total due promptly. Also, most requests for an abatement must be filed in the Assessors' office within 30 days, so if you feel you are entitled to an abatement, please contact the Assessors promptly.

A reminder that my office hours are Monday, Wednesday and Thursday afternoons from 1:30 to 5:00 in my home. If these hours are not convenient, please call to make an appointment (337-4394).

## FIRE DEPARTMENT NEWS

by Chief Earl Gleason

The only response during the past two months was on June 28. It was for aid to the Colrain ambulance in East Heath on a report of a woman who had swallowed some pills. Before it ended the Heath Police, two state troopers, three Heath EMT's and a couple of Heath Firemen aided in the incident.

Three drills were held during this period and one Association meeting. Also the Fire Chief and Police directed traffic on June 8 when a tree blew across Route 8A into the electric line.

The Fire Chief conducted three smoke detector inspections for property sales and also the placement of detectors in plans for a building permit. He also attended meetings of the Tri-State Directors, Deerfield Valley Directors and a Franklin County Dispatch meeting. Another of the State Fire Marshals' seminars was held in Deerfield and the Massachusetts Fire Academy with the Akron Brass Co. held a school in Orange for repairing valves and nozzles.

A new and interesting aspect of the Fire Service happened with the removal and replacement of the gasoline tanks at Peters Store. Permits were granted for the removal, permits to transport and permits to allow the old tanks into an approved yard. (Incidentally the tank yard has to notify the local fire chief on the arrival of the tank.) Also installation permits were granted and permits to allow use of the tanks. (Life isn't as simple as it once was.)

Have a safe summer and fall.

### GREENFIELD CINEMAS 1-2-3-4-5-6

Route 2 Mohawk Trail  
Greenfield, MA

24 Hours Movies Phone 772-0298

### Howard Crowningshield

Building & Remodeling

Tel: Heath 337-4406  
P.O. Charlemont, Ma. 01339

## A DEDICATED TOWN FATHER

by Susan Silvester

A lifelong resident of the Town of Heath, Richard Giard has made significant contributions to his town and community. Richard was born in 1942 at the Heath farmhouse where he has always lived on Colrain Stage Road. A graduate of local schools including Arms Academy, he was active in 4-H. The Heath Hilltoppers, with Walt Gleason as the leader, was primarily a dairy club; Richard was also involved in the FFA or Future Farmers of America Club at Arms Academy. His Holstein cows were exhibited at the Heath Fairs even before the herd reached its largest number of 85 in the 1970's.

Richard was the primary operator of his father's dairy farm for 14 years from 1964 to 1978. However, he then sold the dairy herd as it was not a profitable enterprise.

The Giard farm was purchased in 1941 by David Giard, Sr., now aged 89. Although there were chickens and a horse at one time, it has primarily been a dairy farm. In 1941 there were seven brothers and two sisters in the family with their parents. However, today only Richard and his father live there. Maple sugaring was done from 1941 to 1952 by Richard's father, and from 1964 to 1984 Richard sugared. He still has the sugaring equipment and might give it a try again some time.

There are lots of stories to tell when you live on a farm. I asked Richard about his animals in particular. The story I really enjoyed was about the horse who was always pastured with the cows - so intense was their friendship that he could not be separated from them. One day an electric fence was installed and the horse was led to a new pasture near the house. Seeing his friends, the cows, on the other side of the road in a nearby meadow, he tried to push through the fence to join them. Undaunted when that attempt failed, he backed up some more and tried to break the wire again. The third time the horse got a running start, plunged through the electric fence as if it were string, galloped across the road and over the cow fence to join his friends in their pasture. Needless to say, he was not separated from them again.

Richard has maintained a keen interest in his home town and has served in various capacities for many years. After serving in the army from 1960 to 1963, being stationed in Germany and in Arizona, he returned to Heath to settle down on the farm. It was in the mid-1970's that he began serving the first of three successive three-year terms on the Board of Assessors. Then in 1984 he was elected to the Board of Selectmen. A year ago in May Richard became Chairman of the Selectmen, a position he still holds as he enters his second three-year term. In addition he has served as Deputy Fire Chief and as Civil Defense Director.

When asked about being a selectman, Richard replied that the "whole job is interesting." He feels there has been great cooperation, "with people in town pulling together to make things work." His hopes for the future of Heath are twofold. First, he would like to see better roads and second, good growth in the community. "We are a small hilltown," says Richard, "and it's hard to find businesses to come here. I would like to see small businesses settle here to help expand our tax base."

Richard is a patient man with a twinkle in his eye. He can often be found at odd hours in Sawyer Hall

attending to town business or in the library as a regular customer making his book selections. He has proven himself to be a dedicated, concerned and hardworking town official. We are fortunate to have such a conscientious person in a position of leadership.

## SELECTMEN'S REPORT

by Richard Giard, Chairman  
Heath Board of Selectmen

The Shared Administrative Assistant Program with Susan Wright may come to an end on January 7, 1988, as it appears today. The partial state funding will expire for this position which has been shared by four towns. Colrain is considering a full-time administrative assistant, with Shelburne and Buckland each wanting a half-time assistant. Heath is looking into setting up a three town program with Charlemont and Hawley. We have to start planning for this and then go to a town meeting for approval before January 7, 1988 in order to keep the program ongoing.

John Churchill, Jr. left the Highway crew in late June. We are now interviewing applicants on August 4 to fill that position. The grader has been repaired and is now back in service after having a broken camshaft replaced. The Highway Department is crushing gravel (approximately 17000 yds.) in preparation for the repair of the April storm damage on the roads.

We are planning to hire outside help in order to get as much road work done as possible before snow falls this fall.

We have not yet had a satisfactory answer from the Federal Emergency Management Agency (FEMA) or the Federal Highway Administration (FHA) people on reimbursement of funds for these repairs. With Susan Wright's help we are trying to get answers from these agencies and the State. Contacts with Representative Silvio Conte have resulted in a response (dated July 13) from Federal Highway Administrator R.A. Barnhart referring the request of Heath to the FEMA and the Massachusetts DPW. Representative Conte indicates in a letter of July 20 to Heath that he will follow up with the FEMA on our problem.



Selectman Giard in his home office

(Photo by Sue Silvester)

## HEATH CONSERVATION COMMISSION

by Bill Lattrell, Chairman

Activities involving the Conservation Commission have waned slightly from this spring. This is a welcome relief. At our June meeting the Commission decided to arrange a meeting with the Mohawk Estates Association. The purposes of this meeting were to establish a positive working relationship, to arrange for a public information campaign with members of the Mohawk Estates Association to better inform them of the Wetlands Protection Act and to discuss specific areas of interest in regards to the Wetlands Act. The Association was contacted and was very receptive and willing to work cooperatively with the Conservation Commission. This joint meeting took place on July 30.

In other news the Commission inspected the replication on work at H.T. Associates property Lot 2A. This inspection was a follow-up to the inspection done in May when it was discovered that the replication had not yet begun. The Commission and the property owner reached an agreement that the work would be completed in July. This inspection revealed that the proposed filling and replication had been completed and was in good order. The effectiveness of this replication will be determined over six inspections during the next three years. When the replication is deemed effective, the lien on the property will be removed. It is unfortunate, however, that the Commission discovered a new violation adjacent to the Lot 2A property. When conducting the inspection we found a drainage excavation being performed on Lot 3A immediately adjacent to the 2A lot. This was explicitly prohibited in the November 1986 Order of Conditions. In fact that area was ordered restored, having suffered heavy equipment damage. An enforcement order was issued that day ordering H.T. Associates to stop all work, submit a plan of restoration by August 24, 1987, and complete the work by September 24, 1987. This is the second enforcement order issued to H.T. Associates.

## POLICE REPORT

by Guy Silvester, Chief of Police

During the month of July the Heath Police Department received over 20 phone calls, most of which came in on the new telephone number, 337-4901.

The following types of problems were responded to during the month: larceny, tenant problems, medical notification, drug and alcohol problems, police assistance requests and complaints regarding alcohol given to minors. We took out several complaints, received and delivered arrest warrants as well as a summons. In addition a court appearance was made.



BALD  
MOUNTAIN  
POTTERY

STONEWARE & PORCELAIN

Sarah Hettlinger  
South Rd. Heath, MA 01346 (413)337-4496  
Salmon Falls Marketplace  
Shelburne Falls, MA (413)625-6353

## TOWN COMPUTER ACTIVE

by Newland Smith

Several new software programs have recently been installed in the town computer. These are the result of a grant which Heath received from the State Executive Office of Communities and Development. The programs are designed specifically for small town governments in this state and were developed by Computer Productivity Associates (CPA) of Amherst.

The first of these programs is an accounting system designed to meet the requirements of the state Bureau of Accounts. It will provide accounting records in more detail than our present system and is set up in accordance with the state account numbering system. In addition, the new system will produce the weekly warrant and type all checks.

Another software item just installed is a tax billing and tax collection program. This will take information from the assessors' property description cards, generate the commitment sheets and, eventually, the actual tax bills. In addition it will be used by the tax collector to record all tax payments, delinquent taxes with interest and demands. Although our present tax collector has adapted some of our older software to accomplish some of this work, the new program will encompass all of this in one program and provide a more efficient means of handling the data as well as eliminating the work done by an outside data service bureau. It will take several months to enter all of our present records into this system before it can be used effectively. It is expected, however, that the 1989 tax bills and records will be produced with the new system.

The representative from CPA has spent two days so far installing the above software in Heath and in training our town accountant, treasurer, tax collector, assessors' clerk and the Computer Committee. CPA will also service the system over a telephone line using a modem for the data transmission. This modem was recently purchased by the town as well as communication software to operate it. This part of the system has been used successfully in several tests in which CPA in Amherst has revised data in the Heath town computer.

In addition to the CPA software, the town has purchased a standard data base program, dBase III Plus, which is the basis for the CPA software. Also a small payroll program as well as the communication software have been purchased. The total cost of this software, including three years of service and program maintenance, will be \$7500, of which the town only pays \$1875. The remainder is covered by the state grant.

Another separate software package recently acquired is for the town library. The Western Massachusetts Regional Library System has provided a program which generates the catalog cards, book cards and book labels, all from one set of data entered in the data base. This system is already in use by our librarian who reports that it is a great time saver.

From all of the present use of the Heath Computer system, it appears that several more computers will be required here within a few years.

LARRY'S

*of Shelburne Falls*

CLOTHING



FOOTWEAR

## PLANNING BOARD REPORT

by Bob Dane, Secretary

We held our Public Hearing for the proposed revision of our Subdivision Regulations on July 20. We were disappointed by the lack of apparent interest as demonstrated by the poor attendance at the hearing. Three people showed up, two of whom are members of the Planning Board Task Force. They offered some valuable input and suggestions which we will incorporate into the new regulations. We will be voting to adopt the new Subdivision Regulations at our next meeting on August 3 at 7 PM.

The Planning Board and its Task Force have been working with the new County Land Use Planner, Gwen Hallsmith, and Susan Wright on an application for a Strategic Planning Grant. This application was submitted to the State last week. It will hopefully provide money to hire a consultant who will help us in our revision and update of the Zoning Regulations. This will be a complex task, and having the help of a professional will be invaluable in formulating Zoning Bylaws that are up to date with current laws. We need to move quickly on this project and with the help of the consultant we hope to have a finished product in time for a vote at the annual Town meeting.

## ASSESSORS' REPORT

by Steve Belitsos  
Heath Board of Assessors

During the past few months the Assessors have been busy on a number of fronts:

1. The completion of the tax rate setting process has resulted in a tax rate of \$13.70 per \$1000 of value for FY 1987. We will therefore be sending out our final tax bills by the end of August. We would like to express our appreciation to the Town Accountant, Catherine Nichols, for her help in preparing the recap sheet.

2. With kind assistance from our friends and neighbors we have been correcting errors in the previously published FY '87 property valuation list and will issue a list of corrections at a later date. The Board apologizes for any inaccuracies and wishes to commend the townspeople for the manner in which most of the aggrieved parties have presented their cases. Only through constructive and cooperative dialogue can we achieve our collective goals.

3. We have begun to measure newly constructed and recently renovated property as part of the on-going update of information necessary to accomplish the town's yearly tax collection and tri-annual revaluation. With the town's acquisition of tax administration software for our computer and the appointment of Karen MacDougall as assessors' clerk, the FY '88 tax bills should be on time and relatively error free.

Any questions or comments? By now you know who we are and where we may be found.

### Richard A. Sumner

Journeyman Electrician  
Mass. License #E22622  
Vermont License #J1245  
South Road, Heath  
413-337-4930

## LANDFILL COMMITTEE REPORT

by Richard Giard

On July 22 the Three-Town Landfill Committee met at the Heath Town Hall and took the following action:

1. The individual user's fee will remain at \$10.00 for a permit which covers the remainder of this year until the landfill is closed on December 31.
2. No more demolition material or brush will be accepted after August 1, 1987.
3. No more metal will be accepted after October 1, 1987.

## FROM THE TOWN CLERK'S OFFICE

Town Clerk Karen MacDougall is now issuing the new Landfill Permits. These permits are required for use of our present dump for the second half of this year. The FY 87 - FY 88 stickers issued last year are no longer valid and new permits at \$10 each must be obtained at the Town Hall.

Karen also reminds any dog owner who has not yet obtained his/her dog license must do so or else face a penalty. Licenses can be obtained from her office at the Town Hall.

She also reminds hunters that doe permits must be applied for before August 15.

The 1987 Jury List from the Town of Heath has been selected by the State Office of Jury Commissioner. This is based on a census list of the town made up on the town computer with a selection of all persons 17 years and older. There are 407 residents on the list from Heath which the Town Clerk forwarded to the state last month.

## FRANKLIN-WARE

— SHELBURNE FALLS —

Fuel Oils  
Propane Gas  
Coal

Heating Supplies  
Gas Appliances  
Burner Service

## CHARLEMONT TV, INC.

*Zenith*

Sales & Service

High Street, Charlemont

Tel: 339-6685



**The Baker  
Pharmacy**

**YOUR REXALL STORE**

Tel: 625-6324

Week Days 8:30AM - 9PM

Saturdays 8:30AM - 6PM

Sundays & Holidays 9AM - 12 Noon

52 Bridge Street

Shelburne Falls



## HEATH PEOPLE IN THE NEWS

Betsy Reiley, daughter of Pat and Henry Leuchtmann, left for Nairobi, Kenya on July 10. She will be gone about two and a half years working with the United States Peace Corps on water resource projects. She expects to work on the construction of sewers, latrines, wells and water catchments.

Don and Joan Brownlee and their children, Anna and Donald, have moved back to Washington, DC, where Don is working with a broadcasting company.

Hannah Burrington is spending a while with her daughter in Middlebury, VT. She will return to her home at the Cromacks' on August 9.

Valerie Belval will represent the state of Massachusetts in the competition for Miss Jr. America Show in Worcester on August 19. The winner will participate in the national finals.

The Richard Housners are back in their house on Hosmer Road for the summer. In the fall they will return to Amherst.

Catherine and Bruce Cromack are busy with family reunions. On July 18 the Cromack reunion was held at their house with 35 people attending. The Landstrom family reunion will take place on August 9 also at their home.

Amy Barry held a Home Show and Sale of her Chimney Corner Designs, including patchwork quilted wall-hangings and hand-crafted pillows at her home on August 1 and 2.

Catherine, Alan, Emily and Greg Nichols attended the Nichols family reunion in Mitchell, Ontario on July 25. Alan's grandfather, Lewis T. Nichols, was born in Mitchell. Many of the family still live there, so it was a large reunion.

Martha Sherman McDonough of Des Moines, IA, has been visiting her parents, Mary and Elmer Sherman. While here she attended her 25th reunion of the Charlemont High School. This was one of the last years for the High School in Charlemont. Out of 22 graduates, 13 attended this reunion.

Jack MacDougall of Ledges Road is recuperating at home after surgery in the Franklin Medical Center.

Susan Silvester presented a talk on July 25 at the Pioneer Valley Historical Council meeting in North Leverett on the subject of re-publishing out-of-print books. Susan was responsible for the re-printing of the Mary P. Wells Smith book, Boys and Girls of '76. She is also compiling a biography of Mary P. Wells Smith.

Sheli Galipo is planning to attend Johnson and Wales College in Providence, RI, this fall.



MAIL TO:

Bulk Rate  
U.S. POSTAGE  
PAID  
Permit No. 11  
Charlemont, MA 01339

HEATH HERALD Box 54, Heath, MA 01346

## JOHN ADAMS READ

1909 - 1987

A wind sways the pines,  
And below  
Not a breath of wild air;  
Still as the mosses that glow  
On the flooring and over the lines  
Of the roots here and there.  
The pine tree drops its dead;  
They are quiet, as under the sea.  
Overhead, overhead!  
Rushes life in a race,  
As the clouds the clouds chase;  
And we go,  
And we drop like the fruits of the tree  
Even we,  
Even so.

By George Meredith

## CLASSIFIED

FRESH WINDS FARM Paul and Marcella Lively & Sons  
Excavating - Loam - Sand - Stone 337-4331  
\* \* SCREENED LOAM A SPECIALTY \* \*

EXTRA ROOM? Young people, ages 12 - 22, seeking a home, temporary or extended stay, where they will receive love, guidance and fun. Compensation and support provided. Call Tri-County Youth Programs at 774-3355 or 774-7710.

\* \* LOST \* \*

Maine coon cat. Large grey female named Gumbi; vicinity corner of Colrain Stage and Hosmer Roads. Please call Sue Silvester, 337-4491, if seen.

\* \* \*

Additional copies of the HEATH HERALD are available at Peters Store newsstand, and at the Heath Library

## PETERS GENERAL STORE

The ONLY Store in Heath

INSTANT LOTTERY TICKETS  
NOW AVAILABLE

We Sell Alcoholic Beverages

\*\*\*

Now selling SUNOCO Gas and accepting Credit Cards

\*\*\*

Michael Peters

Tel: 337-5501